



"E Ala Na Moku Kai Liloloa"

**Kamehameha Schools
plans to redevelop area
along Kamehameha Hwy.
in Hale'iwa.**

See pages 12 & 13



NORTH SHORE NEWS February 20, 2013 VOLUME 30, NUMBER 4



Kala Alexander, Sunset Beach, Stand Up World Tour. Banzai Betty photo.

Sunset spindriffs to an epic North Shore swell

"Let's talk story about the surf, big surf." The North Shore has been pumping with some of the biggest and cleanest surf in between stormy conditions. Six big swells since last issue, WOW, we are so fortunate

we live here! Big waves also for the Stand Up World Tour's first event at Turtle Bay Resort and at Sunset Beach. Congrats to the Women who are complete as I write. Winning the event was Nicole Pacelli,

Brazil, Candice Appleby, California, Vanina Walsh, Hawaii and Hannah Frenton was in fourth. This event is the start of the World Tour. The men continued at Sunset Beach in hugh surf ranging from 8 to 15 feet.

Continued on page 15

PRE-SORTED STANDARD U.S. POSTAGE PAID Honolulu, Hawaii Permit No. 1479	Hale'iwa, HI 96712 66-437 Kamehameha Hwy., Suite 210
--	---

**PROUDLY PUBLISHED IN
Hale'iwa, Hawai'i**
*The Surfing
Capital of the World!*



OFF da Island in Sydney, Australia

Tandem surfers Roderick Martin and his fiancé Karin Rushforth of Waialua took a 10-day vacation in Australia. They rented a van in Sydney, drove and surfed up the coast to Noosa just past Brisbane. They are pictured doing a lift with the North Shore News in hand in front of the Sydney Opera House. When Roderick and Karin are not practicing their routines, they can be seen reading the North Shore News to remind them of the good times back on Oahu's beautiful North Shore. For more information on our OFF da Island campaign turn to page 23.

Wednesday, February 27, 2013
Defend Oahu Coalition
Conservation Forum
Sunset Beach Elementary School
6:30 p.m.

*Come and learn some history about the struggle to preserve rural Oahu as well as what your friends and neighbors think about the Turtle Bay developer's latest plans (as reflected in the court-ordered Draft Supplemental Environmental Impact Statement). Also get updates on community conservation efforts and hear about important legislation to help **Keep the Country COUNTRY!***

The Hale'iwa Family Dental Center, Ltd.



presents

"Comfort Dentistry"
 including—

- Relaxation Glasses
- Television Glasses
- Caring Staff
- Special Medication to help you relax
- Laser Cavity Detection
- New Patients Welcome!

Your teeth are much too important to neglect.

Call: 637-9652
 for your reservation

We're conveniently located behind First Hawaiian Bank
 in the heart of Hale'iwa.

TURTLE BAY'S & SURFER, THE BAR'S LINE UP >>

UPCOMING EVENTS

HIGHLIGHTS
 Visit us online for complete event listings.

February 19—March 1 > **IBA GOPRO Pipe Challenge 2013**
The 30th Anniversary of Professional Bodyboarding.

February 22> **MEIKO Live**
Meiko will be performing tracks from her album *The Bright Side* and DJ Baumer is spinning after the show.
Surfer, The Bar | Show at 8 | \$15 tickets at surferthebar.com

February 23 > **Braddah Wayne Live**
Come out for Braddah Wayne's original roots music - a mixture of reggae and rhythm, a must see show stopper!
Surfer, The Bar | Show at 9 | No Charge | 21+

February 25 > **Hawaiian Music Monday >> ROCKY FREITAS**
Doors open at 6p | Show from 7 - 10p | Non-ticketed Event

February 28-March 3 > **The Wanderlust Festival**
Wanderlust O'ahu will bring you all of the yogic & musical goodness you've come to expect from their larger mainland festival events in our intimate Hawaiian setting.
Day tickets are available at oahu.wanderlustfestival.com

March 1 > **Michael Franti and Friends**
With local legend John Cruz and the fiery performances of Soul Fire. Kuilima Point | Show at 7 | \$25 advance tickets at music.wanderlustfestival.com

March 2 > **ALO w/ KAKI KING**
With encore performances from Soul Fire. Kuilima Point | Show at 7 | \$17.50 advance tickets at music.wanderlustfestival.com





**THE DEAL
IS HOT.
THE SHOW,
EVEN HOTTER.**

This spring, adventure is in the air. See "HĀ: Breath of Life" for just \$25 and enjoy a free island-style buffet. For reservations, call 293-3333 or visit PCKamaaina.com.

KAMAĀINA SPRING SPECIAL

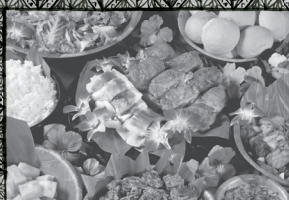
**\$25 "HĀ" Evening Show
With Free Buffet Dinner**



**POLYNESIAN
CULTURAL CENTER**

CELEBRATING **50** YEARS

Offer expires 3/31/13.
Some restrictions apply. Must have valid Hawaii ID. Closed on Sundays.



No job too big or small.
Located at the Waialua Sugar Mill.



**CERTIFIED WELDING
FABRICATION & REPAIRS
OF ALL METALS**



628.8719

**DRAFTPLANS
HAWAII**

- Over 10,000 floor plans & blueprints available for purchase online. Gather ideas for your own design.
- Drafting** Service available for new home designs, additions, renovations, decks, fence, rock walls, etc.
- Free** property specifications & title search info.

www.draftplans.com

Call for free estimates:
265-0035



Friends of the
Waialua Bandstand
present

**Na Leo Nahenahe
o Na Kupuna
Hula Halau**

Sunday, March 3, 2013
4:00 p.m. - 5:30 p.m.
Waialua Bandstand
in the park

Take time out to enjoy an afternoon of music, song and hula. Bring your lawn chairs or blankets and enjoy.



Council Chair
Ernie Martin
Serving You in District 2

Haleiwa Arts Festival Affected By Ban On Commercial Activity In Public Parks

There is currently a ban on nearly all commercial activity at Kailua and Kalama beach parks as a result of a very emotional and intense community debate over Bill 11 last summer. Councilmember Ikaika Anderson, who represents Kailua, authored the bill after receiving numerous complaints about the proliferation of commercial ventures at Kailua Beach Park. Although the measure was initially aimed at tour buses and kayakers, Ordinance 12-28 was subsequently interpreted by the Department of Parks and Recreation to apply to any commercial activity in all City parks.

Of concern to many non-profit organizations in the community who rely on park facilities for fundraising activities, is the restriction on commercial activity is also being applied to food vendors, children's rides and other commercial vendors or rentals that augment fundraising events. The Annual Wahiawa Pineapple Festival is currently on hold and the Hale'iwa Arts Festival organizers have been told that they too will not be issued a permit for the use of Hale'iwa Beach Park if commercial vendors are participating in the festival. Needless to say, the Hale'iwa Arts Festival and other non-profits count on the added revenue from commercial food vendors who contribute to the net proceeds of the event.

In response to the Parks Department's interpretation of the current ordinance, I introduced Bill 5 that provides an exemption for non-profits and fundraising events that include the activities of commercial vendors. In the interim, to allow plans for these events and others to proceed on schedule, I have asked Mayor Caldwell for a moratorium on DPR's enforcement of the provisions of Ordinance 12-28 relating to non-profits. The intent is to allow these organizations to include commercial vendors as part of their permitted events until the law can be amended to remedy the unintended consequences of Bill 11. At a hearing before the Parks Committee on February 12, several Kailua residents testified against the bill out of a fear that commercial operators might reappear on Kailua Beach as non-profit operations.

Among those testifying in support of the measure were Scott Harada of Dot's Restaurant in Wahiawa and an organizer of the Wahiawa Pineapple Festival, along with Kathleen Ells, president of the Hale'iwa Arts Festival and event coordinator Dawn

Dasilveira. They advocated for passage of Bill 5 and testified that both events are in jeopardy if the law is not changed to allow the participation of commercial vendors. The Mayor's office has indicated that the administration may be inclined to support a moratorium on the enforcement of Bill 11 and will work with DPR to consider some specific parameters. In the meantime, Bill 5 will be making its way through the legislative process. For more information on the bill's timetable, please contact my office or e-mail me at emartin@honolulu.gov. Your testimony is always welcomed.

North Shore Recycling Service

Curbside recycling pickup services for homes and businesses

- Two pickups per month at only \$24 per month (2 curbside recycling bins included)
- 100% of the recyclable donated to non-profit organization

Visit us at www.ocr2000.com

To sign up call us at 262-2724 or

email: recycle@ocr2000.com

PAALAA KAI BAKERY

SUPER SAVER SPECIAL



Call us at (808) 637-9795 to place your Sada's Malassada order!



Don't forget...a dozen malassadas lets you buy a Sada's Malassada t-shirt for a hefty 50% discount!

Place your order over the phone for pick-up on any weekday in FEBRUARY for 1/2 dozen malassadas and receive 15% OFF - OR 20% OFF a dozen!

Plus on MONDAYS & TUESDAYS get an additional 5% OFF the February malassada discount prices!



Valid throughout the month of February 2013. Only valid on orders placed via phone.

Your Hometown North Shore Bakery

Order By Phone! (808) 637-9795
66-945 Kaukonahua Rd Waiialua, HI 96791
Right Next the Paalaa Kai Mini-Mart



Kahuku High & Intermediate “We the People” team

Kahuku High & Intermediate School students competed and won first place in the Hawaii state We the People, the Citizen and the Constitution competition at the first Circuit Court in Honolulu on Saturday February 2nd. This was a culminating activity of a year long course in which we study in great depth the U.S. Constitution. The competition is a simulated congressional hearing in which students “testify” before a panel of judges. We were required to demonstrate our knowledge and understanding of constitutional principles and were given opportunities to evaluate, take, and defend positions on relevant historical and contemporary issues. We were one of only three public schools along with several private schools competing and are very pleased to have placed first in the state and retained the title we earned last year.

This April, we have the honor of representing the state of Hawaii at the National Competition in Washington, D.C. The cost of the trip is approximately \$2,000.00 per student. Unfortunately the federal funding for this program has been cut yet it continues to thrive due to many hard working individuals such as Sandra Cashman who is our state coordinator.

We are grateful to the community for all your support we received in the past and especially to Harold K. L. Castle Foundation for providing a generous grant of \$7,500.00 last year.

We are now beginning to coordinate various fundraisers for this year. Please stay tuned for our ads in the North Shore News. One event is a “zumba night” with several instructors in the Kahuku High & Intermediate gym from 5:30 to 7:00 p.m. This will be Thurs. March 7th.

We are also having a silent auction with live performances at Sunset Beach Elementary Cafeteria Sat. March 9th from 8:00 a.m. until noon.

We appreciate your support and hope to represent Hawaii well!

If you are interested in donating whether it be monetary donations or items for our auction please contact Mrs. Harney at Harney.jan@gmail.com.

We've Moved
66-037 Kam. Hwy., Ste. 3
Haleiwa, next to Growing Keiki

Saccoccio & Lopez
ATTORNEYS AT LAW
Serving Haleiwa since 1984

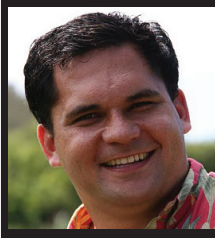
*Bankruptcy
Personal Injury • Criminal Law
Landlord/Tenant
Traffic Offenses • DUI*

Family Law
*Adoption • Custody • Divorce
Paternity • Guardianship
Deeds, and Wills*

637-7611
VISA/MC Accepted



Paul & Nita



State Representative
Richard Lee Fale
Serving You in District 47

Leading By Example, Not By Charging Fees

Many of the State Legislature's contentious moments during the legislative session center around money. Whether it is raising taxes to help fund state programs or creating fees for special projects and interests, there is always a proposal to generate revenue for a fund or program.

This session is no different. While our state has seen a positive financial pivot from the difficult times since 2008, we still face uncertainty with unfunded liabilities, the necessity to improve aging state infrastructure and a desire to invest in programs that will protect and sustain our environment and improve our educational and economical opportunities in the future.

This session, many bills have been introduced that attempt to generate revenue for the State. Some are simple like raising the general excise tax, while others are more complicated, like creating fees for special funds. I am skeptical of some of these measures because in the past, fees have been raised for one thing, but spent for another. Raiding the Hurricane Relief Fund, which left a community like ours with limited access in and out, particularly vulnerable, is just one example.

Because of this, I have voiced concerns about proposals to tax sugary beverages and to charge a fee for single-use checkout bags. Both proposals are noble in trying to address the alarming rise in obesity and protect our environment. However, I am aware of the potential in the future for these funds to be diverted into efforts that they were not originally intended for.

Moreover, I am not in favor of unnecessarily increasing financial burdens on the backs of our community. These fees tend to disproportionately impact those in the lower income bracket. They target specific consumers and try to change behavior by disincentivizing certain actions instead of educating and incentivizing positive behavior.

Opportunities to educate children and families about healthy eating habits and reducing your carbon footprints are plentiful. Many of us here on North Shore O'ahu live a special lifestyle that incorporates cultural practices and balanced living and we have much to offer our neighbors in Honolulu and across the state. Grassroots efforts to change behavior and work for a healthier, cleaner Hawaii will make a long-lasting impression, more so than throwing money at the problem.



Polynesian Treasures

Hawaii's largest selection of Polynesian handicrafts and Hawaiian inspired gifts.

North Shore Marketplace * Haleiwa, Hawaii
Open daily from 10 am * (808) 637-1288

KUA'AINA



The Best!

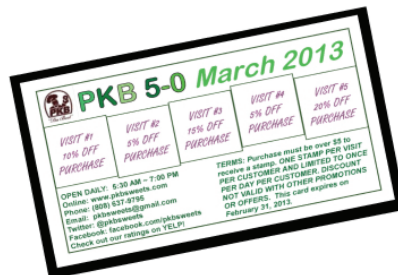
• IN HALEIWA •
637-6067

• IN HONOLULU •
591-9133
AT WARD CENTRE

HALEIWA • TOKYO • HONOLULU • LONDON



WOW, BEST BARGAIN THIS SIDE OF OAHU



Visit PKB & PICKUP your FREE

PKB 5-0 STAMP CARD

Get a stamp with each purchase of \$5 or more and SAVE!

PLUS ~ REDEEM YOUR COMPLETED STAMP CARD FOR A FREE \$5 PKB GIFT CERTIFICATE!

Only 5 discount visits to earn a \$5 gift certificate; where can you find a better deal?

Your Hometown North Shore Bakery

Order By Phone! (808) 637-9795
66-945 Kaulaonahua Rd Wai'ialua, HI 96791
Right Next to the Pa'alaa Kai Mini-Mart



Representative
Lauren Cheape
Serving You in District 45

Aloha,

With the first session of the Twenty-Seventh Legislature in full-swing, I would like to take this opportunity to let you know what I'm working on and what we're doing down at the Capitol. In addition to my five Committee assignments (Agriculture, Education, Higher Education, Health, and Housing), I have submitted five House Bills for consideration by the Legislature (HB 1448, HB 1449, HB 1450, HB 1451, and HB 1452), and I am a member of four caucuses (the Small Business Caucus, Women's Caucus, Keiki Caucus, and Filipino Caucus). My Bills are:

- HB 1148 creates a task force to study ways to make starting a small farm easier and more feasible.
- HB 1449 would initiate a pilot program that would give farmers preferential electricity rates in an effort to reduce to the cost of production for locally grown food.
- HB 1450 would appropriate funds for Capital Improvement Projects (CIPs) in our district. Among other things, this includes funds for Kipapa Elementary, Waiialua Elementary, Mililani Middle, Mililani Uka Elementary, and Mililani High Schools.
- HB 1451 will also create a task force that will develop strategies to allow the local agricultural community to better compete with imported products, which typically have lower production costs.
- HB 1452 will establish an advance rate payment system for exceptional caregiving families that will help to ease an already overburdened foster care system.

If you would like to submit testimony on these or any other issues, I encourage you to visit the Capitol website, www.Capitol.Hawaii.gov. From there, you can submit testimony, track bills through the legislative process, view committee meeting times, and even receive email notifications about bills that are of importance to you. The best resource for assistance with this process is the Capitol's Public Access Room, located at the Capitol in Room 401, or online at hawaii.gov/Irb/par. Of course, my highly capable staff is also available to assist you in any way possible.

On another note, earlier this month I jump roped with students and performed at Waiialua Elementary's 'INA Day, as well as for "Jump Rope for Heart" at Holy Family Academy in honor of February being Heart Health Awareness Month. I will also be participating in the Keiki Run on February 16th at the Great Aloha Run Expo at the Blaisdell Exhibition Hall. I encourage you to participate and I look forward to seeing you there!

Mahalo nui loa,
 Representative Lauren Kealohilani Cheape



Free Family Movie Night
at Waiialua Community
Association



Joyful
Noise

Fun for the whole family!
Friday, March 15 at 7 p.m.
FREE ADMISSION

Drinks & Popcorn for sale



Co-sponsored by: Zumba with Coco and WCA.
 For more information, call 637-4606
www.WaiialuaCommunityAssociation.org

North Shore Restaurant
FOR SALE
B's Bar & Grinds

Excellent location across from Long's
 in the Haleiwa Town Center.

2200 sq. ft. of space,
 includes a second level office, storage, and
 possible cold prep area.

500 sq. ft. additional
 outdoor patio seating area.

Liquor license is current.
 MLS 1300615 (for more info and pictures)
 \$295,000
 Leasehold

Please call or email:

Marianne Abrigo Properties
 637-3511 • mabrigo222@aol.com

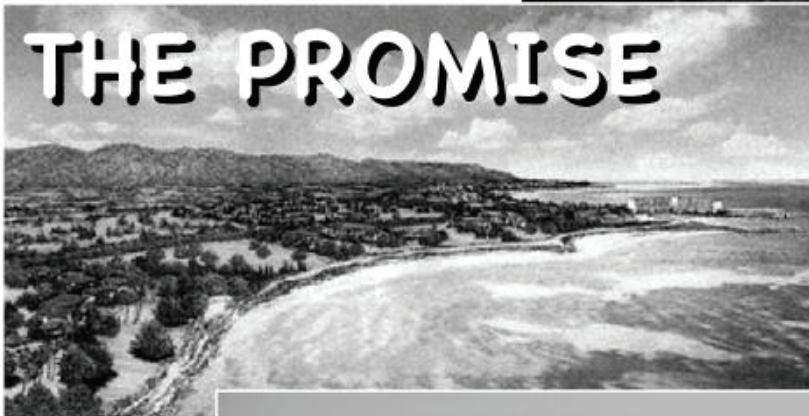
TURTLE BAY SEIS REVIEW NORTH SHORE NEIGHBORHOOD BOARD

THE PROMISE

TUESDAY, FEB. 26
7 P.M. AT HALEIWA
ELEMENTARY SCHOOL



THE PROMISE



EXISTING HOTEL

NEW HOTEL BUILDINGS

90 FT HIGH BUILDINGS!

HUNDREDS OF RESORT RESIDENCES

LARGER THAN WAIKIKI!

TURTLE BAY

KAWELA BAY

REALITY ?

**ATTEND THE MEETING TO GET THE FACTS
AND EXPRESS YOUR OPINION!!!**



**Country Talk Story
with
Choon James**

Every day is Arbor Day in Hawaii!

Arbor Day made its debut on April 10, 1872 in Nebraska. Julius Sterling Morton (1832-1902), a Nebraska journalist and politician (originally from Michigan) was the founder of this movement.

Morton served as President Grover Cleveland's Secretary of Agriculture. Today, all 50 states recognize Arbor Day and strive to plant trees for its countless positive features.

Every day is Arbor Day for us. We don't have to hassle with the snow and ice. Some kupunas advise planting trees during Thanksgiving. Besides, the positive vibes of the occasion, it's a pragmatic time because of the rainy season.

I find success with bananas. They are easy to plant and quite self-sustaining. Once one is planted, the plant shoots will appear. Banana trees are also suitable for small lots because it does not have an evasive root system.

There are also other fruit trees that grow quite easily in our area. Tangerine, lemon, soursop trees do not get too huge either.

The ulu tree is a very versatile tree but it can grow to cover the whole yard and its roots are evasive. Even then, I've seen lots of ulu trees in homes with 4,000 square feet of land. We have some mature ulu trees and left alone, the roots have spread with new plant shoots appearing.

There are also shrubbery that thrive very well. The heliconias and the ginger plants grow well. So are the ti leaves.

My favorite nursery is probably the Ko'olau Farmers Nursery in Kaneohe by the Burger King Junction. But I've pretty much found special plants all over the island.

Just about anything and everything grow well in Hawaii. Let's plant appropriate greenery. It helps the ecosystem, increase property values, and we get to enjoy the fruits of our labor!

Choon James has been a real estate broker for over 20 years. She hosts "Country Talk Story" on Olelo Television every Saturday at 5:00 pm on Channel 55. Choon can be reached at 808 293 9111 or ChoonJamesHawaii@gmail.com

Letters to the Editor

To the Editor,

Four local rock climbers have been cited at Kaena Pt. State Park for trespassing when they were climbing at "the jungle." Duo Ohn, Rosanna Ho, Kevin Nasnow, and Israella Samonte will be on trial March 7. When did rock climbing become a crime? Doesn't the legislature have to vote on a bill to enact a law? Aren't there supposed to be public hearings on the matter?

On June 14, a rock fell and hit one person when Camp Erdman was preparing to climb at the "main wall" at Mokuleia. So the state D.L.N.R. closed that trail saying that the area was unsafe. So the rock climbers went to other cliffs in the area that they had been climbing for more than 20 years. Places like "the Banyon," the "Accordion Wall," and Poelele are cliffs in the other gulches near Kaena Pt. Now the state has put in kapu signs at the other trailheads as well. This is an access issue for all people, not just the rock climbers. Pig hunters are now kept out. Hikers can not go there. Native Hawaiians that want to gather forest products are excluded. (There is kiawe wood and kaunaoa in the area.)

Other states have parks that welcome rock climbers—and they make millions of dollars from the increased tourism. For example, Yosemite in California and Joshua Tree. Why not Hawaii? Just because one rock falls does not mean the whole area has to be closed. Let's support a bill in the legislature that allows people to use the mountains "at their own risk" so that the government will not be sued in case of accidents.

Aloha,
Steven Poor

BREAKFAST
7 AM to 11 AM DAILY



Haleiwa Shopping Plaza - 637-5095

PLUS \$2.00 Off with this Coupon

Some Restrictions Apply. See Restaurant for Details.
When Ordering Regular Priced Items. Good Anytime. One Coupon Per Person.
Can Not Be Combined with Other Discounts. Expires 03/31/2013.



Alice Webb, Special Olympics Central/Honolulu Area "2013 Female Athlete of the Year."

Special Olympics Hawai'i Makes a Splash with North Shore Swim Program

Take your mark, get set, go! Special Olympics Hawai'i invites swimmers to make a splash with a free swim program in Waialua. Participants will have the opportunity to hone their skills, one stroke at a time, to learn or improve their abilities in free-style, breaststroke, backstroke and butterfly.

The program is available to participants with intellectual disabilities who are eight years and older, and have intermediate or advanced swimming ability. Swimmers may even have the opportunity to make waves in competitive events scheduled for April 13, 2013 at Kaiser High School and the State Summer Games scheduled to take place from May 24-26, 2013 at the University of Hawai'i Manoa campus.

Special Olympics Hawai'i provides year-round sports training and athletic competition in a variety of Olympic-type sports for children and adults with intellectual disabilities. Programs like these provide individuals with ongoing opportunities to develop physical fitness, demonstrate courage and share joy with their families, other Special Olympics athletes and the community.

Practice will take place at the Waialua District Park swimming pool every Saturday from 11:30 a.m. - 1p.m. on March 2, 9, 16, 23, 30, April 6, 20, 27, and May 4, 11 and 18, 2013.

Want to help these Special Olympics Hawai'i athletes make a splash? Volunteer assistant coaches and certified lifeguards are needed for this program.

To sign up, please contact Coach Darlene Neal at (808) 492-5846 or darlenekneal@juno.com. For more information, contact Jennifer Ernst, Special Olympics Hawai'i area director at 808-943-8808 x 112, ha@specialolympicshawaii.org, or visit the Special Olympics Hawai'i website at www.specialolympicshawaii.org.

Zumba Night

Fundraiser for Kahuku High's We the People

Thursday, March 7

Kahuku High Gym • 5:30-7:00 p.m.

several experienced instructors

\$7 pre-sale & \$10 at the door

SILENT AUCTION

Fundraiser for Kahuku High's We the People

Saturday, March 9

Sunset Beach Elementary Cafe

8:00 a.m.-noon

Silent Auction and Entertainment



Social and architectural history of Hale'iwa buildings to be documented

Kamehameha Schools hires conservation architect for Hale'iwa Store Lots redevelopment project

A historic conservation architect hired by Kamehameha Schools will photograph and document the Aoki's Shave Ice and 'Iwa Gallery buildings in Hale'iwa so their history, construction and other attributes can be preserved and researched in the future.

Kamehameha plans to preserve, rehabilitate, and adaptively reuse five historic buildings when it begins construction and redevelopment within this long-time commercial area later this year. An assessment of the existing buildings conducted in 2012 determined that two of the structures – the shave ice and art gallery buildings – were too deteriorated to repair and save.

Spencer Leineweber, FAIA, an authority on Hawaii plantation architecture and Director of the Heritage Center in the School of Architecture at the University of Hawai'i at Manoa, prepared a Historic District and Building Inventory report on all the historic structures and an Existing Condition Assessment of Aoki's and 'Iwa Gallery. She will now begin photographic and written descriptions of both the streetscape and individual buildings while the buildings are still occupied and again after they are empty. Her process will follow the standards of Historic American Building Survey (HABS) level II documentation. As stated in the HABS Guidelines, "The purpose of documentation is to preserve an accurate record of historic properties that can be used in research and other preservation activities."

Kamehameha notified the owners of Aoki's and 'Iwa Gallery this week that their month-to-month leases will end May 31, 2013. Once the buildings are empty, demolition crews will meticulously remove layers of construction materials that have been used to stabilize the buildings over the years, and Ms.

Leineweber will record the original single wall construction techniques. Many of these construction details are currently covered with modern materials. KS also hopes to utilize original and historic construction materials – like windows and doors – in the new construction. Adds Leineweber, "The proposed development is very sensitive to historic preservation concerns and the design intent maintains the scale and essential character of this important commercial area in Hale'iwa."

New development to be named Hale'iwa Store Lots

Kamehameha Schools plans to redevelop the area along Kamehameha Highway between Kewalo and Mahaulu lanes and rename the commercial area Hale'iwa Store Lots, a historical reference to the site's original name, Waialua Store Lots.

The improvements are needed to strengthen aging infrastructure and increase pedestrian safety by moving customer queues away from the edge of busy Kamehameha Highway. In addition, the redevelopment will include new landscaping that will separate pedestrians from vehicles, assist drainage, add 108 parking stalls to the rear of the project and provide additional retail space for local businesses. The project is expected to cost \$12.6 million.

Five historic buildings on the property – including the building housing Matsumoto Shave Ice and the two Yoshida buildings built in the early 1900s – will be rehabilitated and adaptively reused. Matsumoto Shave Ice plans to remain open for business during construction.

"We are saddened to see the departure of Aoki's and Iwa Gallery. Aoki Shave Ice, in particular, has been in Hale'iwa since 1981. They represent many of the qualities that we will be preserving in our new line up of tenants: Local Hawai'i businesses- many mom and pop stores- unique and appealing to both locals and visitors," adds Kalani Fronda, senior asset manager at Kamehameha Schools.

In November 2012, the Honolulu City Council unanimously approved a zone change application for the 4-acre parcel. Kamehameha Schools expects to request contractor bids in April and begin construction this summer. The project is expected to be complete by summer 2014.

In addition to Hale'iwa Store Lots anchor tenant Matsumoto Shave Ice, who has been there since 1951, Kamehameha Schools is concluding lease negotiations with many other locally-owned and operated businesses, including several with ties to the North Shore. Categories for these businesses include dining, apparel, gifts, convenience, and coffee.

Hale'iwa Store Lots is part of KS' overall North Shore Plan (NSP) which was developed in 2008 in conjunction with an extensive community planning process. This process began the planning for seven "catalyst" projects. Other catalysts of the NSP which have been implemented by KS include the restoration of Loko Ea fishpond, agricultural water system improvements and renewable energy.

The start of construction culminates an additional two-year long consultation with Hale'iwa community members, area kupuna, neighborhood board, Historic Hawaii Foundation, the State Historic Preservation Division, the City and others. Feedback from these groups has helped improve the project's design and resulted in an architectural scheme that preserve the site's historic qualities, and rural scale and character.

All About Hala

An Informative lecture by Sarah Keahi

Sponsored by the North Shore Outdoor Circle and Waimea Valley

February 23rd @ 10 a.m. – 12 noon
Waimea Valley Pikake Pavilion

The hala tree also known as Pandanus tree is of great cultural, health and economic importance in the Pacific. Hawaiians distinguished five kinds of hala.

Kumu Hula Sarah Keahi, now a retired Kamehameha Schools Hawaiian language teacher, is one of the most respected teachers of Hawaiiana. From the start she was immersed in all of the aspects of her cultural roots beginning with the tutelage of her Tutu and her mother. At UH Sarah majored in Hawaiian language with graduate studies in Pacific Island Studies.

She mentored many students and others in her 37 years at Kamehameha Schools who are now Hawaiian language teachers themselves throughout the state. While teaching and raising a family, Sarah studied under Kumu Hula Maiki Aiu Lake to become a kumu hula.

In the footsteps of her Tutu Sarah Keahi Smythe and her mother, Helen Smythe Ayat, she has played key leadership roles in the Royal Society, Mamakau. She is also a leader in her Hawaiian Civic Club, Kuini Pi'olani. And she took up the challenging task of working for over two years as Senior Editor of the Hawaiian Bible.

Sarah is a lover of the flora and fauna of the islands, both endemic and indigenous and the roles they played and still play in the Hawaiian Culture.

She enjoys sharing her Hawaiiana knowledge and experiences with her wide circle of friends. Her aunt, Sadie Smythe Seymour, was the first President of Kona's Outdoor Circle. In Kona there is an Arboretum in her aunt's name, designed by her son, Scot.

Last year Sarah was honored with the Kalani Ali'i award for her life time contribution toward the advancement of the Hawaiian people.

Kumu Sarah continues to be a veritable fountain of information with a delightfully warm personality full of enthusiasm that is always contagious.

The community is welcome to attend Sarah's presentation of Hala – How it is grown and how it is used in the Pacific Rim areas. Sarah will explain the various varieties of hala and show some of her tutu's woven hats and other items made from hala.



THE NORTH SHORE
OUTDOOR CIRCLE
and
WAIMEA VALLEY

Present

A Unique Cultural & Botanical Lecture
by renowned Kumu Hula Sarah Keahi

"ALL ABOUT HALA"

Saturday, February 23, 2013
10:00 a.m. - 12:00 Noon
Pikake Pavilion in Waimea Valley

Humane Animal Advocacy Day kicks off in Hawaii

Hawaii animal advocates lobby lawmakers to protect pets and marine wildlife

Hawaii animal protection organizations and residents concerned about animal welfare from across Hawaii converged on the state capitol for Humane Lobby Day in Honolulu on Friday to urge lawmakers to pass better laws to protect Hawaii's pets and wildlife. Humane Lobby Day is sponsored by The Humane Society of the United States, and co-hosted by the West Hawaii Humane Society, K9 Kokua, Oahu SPCA, Hawaii Cat Foundation, Cat Friends, Kauai Ferals, Equine 808 Horse Rescue, Hui Pono Holoholona, Kauai Humane Society, For the Fishes, Hawaii Island Humane Society and the Big Island's AdvoCats.

"It is so exciting to see people from across the state come to the capitol and speak up for animals," said Inga Gibson, The HSUS' Hawaii state director. "Animal protection is a bipartisan issue that has tremendous support among Hawaii voters, and we must be the voice for the voiceless."

The HSUS also presented Judiciary Chair Sen. Clayton Hee, D-Kane'ohe, Ka'a'awa, Hau'ula, La'ie, Kahuku, Waialua, Hale'iwa, Wahiawa, Schofield Barracks, Kunia, and Agriculture Chair Rep. Jessica Wooley, D-Kaneohe, Heeia, Ahuimanu, Kahaluu, Haiku Valley, Mokuoloe, with the 2012 Humane Legislator of the

Year Award for their past and continued outstanding efforts to better protect Hawaii's animals.

Humane Lobby Day participants are meeting with their state legislators to urge their support for a number of measures under consideration this session, including bills that would prohibit the use of cruel snare traps in residential areas; set basic welfare standards for large-scale dog breeders; prevent non-veterinarians from performing painful procedures on pets such as ear-cutting; protect Hawaii's precious marine wildlife, and disallow anyone convicted to animal cruelty from owning animals for a period of time.

Hawaii ranks 35, up from 43 in 2010, in The Humane Society of the United States' 2012 "Humane State Rankings" which grades each state and the District of Columbia based on a wide range of animal protection laws dealing with pets, animal cruelty and fighting, wildlife, animals in research, horses and farm animals. In the past four years, Hawaii has passed some strong animal protection laws, but there is still plenty of room for improvement.

In 2012, The Humane Society of the United States helped pass 74 new laws nationwide to help protect animals.



Wakita coming around the corner of a dream. Wakita is making his home on the North Shore, this is why.



BANZAI NORTH SHORE WIRELESS

Xcel has been busy winning more awards and organizing a race. Their inaugural SUP event attracted over a hundred racers in Waikiki for a great cause. All the proceeds went to the new UH Cancer Center. The race was 2.4 miles from Kaimana Beach to Duke Kahanamoku Beach. Top Men's finishers included overall first place and Unlimited division winner Ingo Rademacher (18:55), 14' division winner Kione Dahlin (19:45), and Stock 12'6" division winner Cody Huf (20:09). Top Women's finishers included overall Women's first place and Unlimited division winner Jenn Lee (22:38), 14' division winner Jennifer Fratzke (23:27), and Stock 12'6" division winner Sue Sheard (25:50).



Surfer unknow. Xcel's new wetsuit boot.

Find the race results and photos at xcelwetsuits.com. So Xcel also announced they won a SIMA, Surf Industry Manufacturer Association, award for "Hard-goods Accessory Product of the Year". They won for their new Drylock boot at the awards ceremony at Grove Theater in Anaheim, California. The wet suit boot is a favorite of big wave cold water surfers. The award was for the most exciting innovation, design and appeal. Innovative technologies include Xcel's exclusive drylock ankle seal construction and heat-retaining, earth-friendlier ThermoCarbon lining made from bamboo charcoal and recycled poly fibers. Stop by the shop and congratulate Xcel!

We here at Banzai have been checking the retail market news and here is some good news. At least one big media agency ComScore is seeing a 15 percent increase in retail sales in the U.S. They saw a 50 billion dollar quarter, the first in a while and the thirteenth consecutive quarter with year-to-year growth. The market includes on-line sales where the best performance was in digital content, consumer electronics, toys and hobbies, apparel and books and magazines. They grew about 15 percent. Looks good on other fronts as well. More reason for our North Shore businesses to be happy is new visa policies and more direct air flights. Should make it easier for our visitors. Our little North Shore is growing all the time.

Volcom killed it this year. It seems they are blessed with great surf every time they have an event. North Shore's own John John Florence won the title, the third

in a row for him at Pipeline. Florence was the stand out scoring 4 scores above 9 in his first competition of the season, an incredible feat and doing it with great poise. The event was successful for other Hawaiians who were guaranteed a berth into the Pipeline Masters in December. The list includes Jamie O'Brien, Reef McIntosh, Bruce Irons, Olamana Eleogram, Kahea Hart, Kaimana Jaquias, Marcus Hickman and Joel Centeio. Jeannie Chesser was also on board to give out the annual Todd Chesser award to Kahea Hart for his dedication to the event and sport. Chesser passed away surfing big waves near Alligator rock in 1997. Please send info you would like to include! Yell at me banzaib@hawaii.rr.com Banzai Betty.com

★
BANZAI PRODUCTIONS

Video - Media
Need Web Video
Ask About Our
Special Rates

808- 781- 2535

★

Waialua - The Saga of the North Shore

Chapter 27 - George Cox, (Part 2)

By Kalewa

When Kamehamea died on May 8, 1819, Ka`ahumanu stepped away from his death bed stating that he had decreed that she should co-rule the kingdom as regent, under the title of Kuhina-nui. No one dared debate that declaration. She brow-beat her step-son, the new King Kamehameha II, Liholiho, into neglecting to reinstate the old kapus. This extended the season of debauchery and disenfranchised the kahuna class who held power over the people only if there were laws to follow and protocol to adhere to.

As was customary after the death of a high chief, the big kahunas gathered to set about determining who it was who must have prayed the King to death. Just as the ceremonies were about to identify an appropriate culprit to sacrifice, George Ke`eamoku Cox busted in to the hale in an inebriated state and scattered the priests out in to the rain, cursing like an Englishman.

Kamehameha's war-god Kūkailimoku (the illustration in Chapter 24) was given to Kekuaokalani who gathered a battalion of kuhunas, chiefs and warriors faithful to the old gods and attacked the revolutionary forces under Ka`ahumanu's family. The primary battle was fought near Keahou Bay, South Kona and was a complete victory for the reformers who had access to Kamehameha's considerable weapon stores.

The few families of highest chiefs now had free reign to trade as they wished on whatever lands they considered their realm. The primary trade commodity was sandalwood, which the chiefs sold before it was cut and long after it was gone. The traders, mostly Americans, brought in endless shiploads of luxury goods and alcohol to be sold at credit for the sandalwood, which was rapidly being depleted. .

Status was measured by the size and value of the warehouses of commodities stashed away to rot under thatched roofs. Some of the high chiefs built haole style houses in Honolulu, Lahaina and Kona with settings of western furniture, seldom used.

The chiefs and their immediate families were large people, more well dressed than any of the traders or missionaries. During the early 1820s they appeared as inebriated as the foreign sailors and traders they shared the streets with. The local people wore little clothing and gathered about the chiefs as a source of food more than respect.

Cox was overlord of Waialua. However, he had

given Ukoa Pond and the fishing village of Kapaeloa to his younger sister Pi`ia. There were then three haoles in residence at Waialua. They were treated like Hawaiians paying rent to Cox and the other chiefs. One of them, Joseph Thomas, alius Joe Footprick, complained that he dared not make too many improvements to his land or show any wealth at all, for fear of it being taken away at the whim of Cox or his Konhiki (and brother-in-law), La`anui.

When Kaumuali`i was deposed from his rule on Kaua`i in 1821, Cox was sent to govern the island for a few years. During his absence Ka`ahumanu visited the North Shore at least four times collecting sandalwood on her own account. She also sent a considerable amount of fish, both fresh and salt, to Honolulu. A family of Ni`hau mat weavers were left in Waimea Valley during the 1822 visit after she and Kaumuali`i had returned from the annexation of Nihoa.

Cox bought the 40-ton schooner America from J.C. Jones for the purpose of moving sandalwood and other goods from his holdings to Honolulu. At one point King Liholiho sent a ship to Waimea to collect wood to pay for his new brig Thadeus. Cox refused to honor the King's debts and was soon implicated in another plot to dethrone him.

Cox generally backed the missionaries and offered some support, but never did convert. When his wife, Kekuaiaea, died in 1822 the funeral rites were considered downright pagan. The Waialua kahunas Lokai and Pu`ali devedined that a certain Ewa chief had prayed her to death, so he was in turn roasted whole at Waikele.

The 1823 royal tour of the islands was interrupted to bring the ailing Cox to Honolulu, where he died on March 23. George Ke`eamoku Cox left the usual warehouses of luxury goods to be destroyed by fire or cast into the sea. His debts were only 307 piculs of sandalwood, which he actually could have paid.

His coffin had "COX" carved in to the lid. His younger brother, Kuakini, came over from Kona. In the dark of night he took Cox's body away, leaving an empty coffin for Reverend Bingham to pray over.



See you at Jerry's Pizza for lunch!

The Hawaii State Public Library System now offers two new e-Resources

Ed2Go, an exciting new Gale/Cengage Learning program, provides Hawaii residents statewide with access to free instructor-led, online courses. "Ed2Go will provide our patrons with additional opportunities to increase their personal and career development, help them lead more engaged, fulfilled lives, and support their lifelong learning needs," said State Librarian Richard Burns. "Our library patrons will be able to enroll in hundreds of courses in a variety of subjects, including 19 that can lead to continuing education credits, ranging from personal finance to digital photography to health and wellness."

Ed2Go courses are developed by expert instructors, many currently working at universities around the country, and have continuous enrollment dates. Each individual course is offered online for six weeks and features 12 lessons with online discussions, homework, quizzes and a final exam.

Hawaii residents can enroll and participate in courses from library computers or remotely from their home computer or mobile device. To access Ed2Go, click on the "E-Learning @ Your Library" logo on the right column. Patrons will need a valid HSPLS library card to apply for a passcode to use when registering for a class, instead of making a payment. Funding

for Ed2Go is provided by the Federal Library Services and Technology Act, which is administered by the Institute of Museum and Library Services.

OneClickdigital, a new audiobook download service, offers nearly 4,000 fiction titles to choose from and is compatible with Apple, Microsoft, and Android devices. The titles are suitable for all age levels and there is a 10-item limit.

OneClickdigital is provided by Recorded Books, the world's largest independent publisher and distributor of unabridged audiobooks on cassettes, CDs, and downloadable. The many advantages of borrowing these audiobooks include: no waiting lists for titles, up to a 21-day loan period, and no overdue fees since the title will "disappear" from your computer or device screen on the due date.

Hale'iwa Art Walk

Last Saturday of every month

6:00 p.m. - 9:00 p.m.

Hale'iwa Town

Waialua High & Intermediate School
PROJECT GRAD 2013 FUNDRAISER
Support WHIS PG 2013 by renting your tuxedo from
Celebrity Tuxedos. \$10 from every tuxedo rented for
WHIS Jr/Sr Prom will be given to WHIS PG 2013

PROUD SUPPORTER OF PROJECT GRADUATION
FROM STUDENT SPECIAL - VALID FOR PROM ATTENDEES ONLY

from prices start at
\$39.50
WHILE SUPPLIES LAST

CELEBRITY
tuxedos

BLENDING FORMAL FLAIR WITH ISLAND HEART

Waialua General Store

Across Waialua Post Office
Next to Laundromat

Onolicious

Steak Plate Special
with FREE Soda
Wednesdays \$7.95

Most Delicious Filipino Food
on the NorthShore
EVERY DAY

Business Hours: 10 a.m. - 7 p.m.
7 Days a Week

Phone: (808) 637-3131



Subscribe to the North Shore News

- Standard Mail (2-3 wks)
25 issues - \$35.00
- First Class Postage (3-5 days)
25 issues - \$55.00
- Email
25 issues - \$25.00

Make check payable & mail to:
North Shore News
P.O. Box 1117
Haleiwa, HI 96712

Include contact information and mailing address.
Credit card payments call the
North Shore News office at
(808) 637-3138

Free Tax Aid offered for needy area residents

Free tax preparation assistance is available now through early April, especially for low- to moderate-income workers.

The Family and Individual Self-Sufficiency Program has trained volunteers at the following site by appointment:

Waialua Federal Credit Union
67-292 Goodale Ave. #A-2

8:30 a.m. to 3 p.m., Monday-Friday through April 5
Call 753-8498

The statewide service began in 2005 as a pilot program of Aloha United Way and is designed to alert taxpayers to valuable tax credits, save them money, encourage financial literacy and recruit and train others to work at the sites. For more details, visit hawaiiataxhelp.org.

Fun-raiser & Surf Sample Sale March 9 • 9 to 1 @ WHIS

Crafts, booths, food and fun.

Please join us in sending 20 of our finest to Italy next spring. For more information please contact Rebecca Arlander, Marsha Taylor or Moana Olaso at 637-8200.

Quality Tile Crafts

"No job too big or small!"

Specializing in Ceramic Tile,
Travertine, Marble, & Slate

Kevin Wilson

cell (808) 864-4985 office (808) 638-8492
www.QualityTileCrafts.com Free Est.



Professional Tattoo & Body Piercing Studio

Located in the
Waialua Shopping Center
Near the
Old Sugar Mill

808-312-3444

Custom Designs • Re-Do's • Cover-Ups • Free Consultation

oahutattooink.com

Mokule'ia Writer's Retreat April 7-12, 2013

Calling all writers, novelists,
poets, journalists,
and passionate scribblers!

COME JOIN US:

Bestselling Author - Laura Fraser
UH Professor - Steven Goldsberry
NS Native and Author - Constance Hale
Hawaiian Musician - Aaron Mahi
Poet and Composer - Pukea Nogelmeier

For information call: 637-6241 or
Email: shanee@campmokuleia.com

Our next service at Hale'iwa Beach Park

Sunday, February 24

We're the church that gives to you



Lunch for everyone at 12 noon!

SURFERS, SAINTS & SINNERS ARE WELCOME!

OAMC is a community outreach made possible by many generous supporters and volunteers. If you would like to support or volunteer for the OAMC call 690-0377.

The OAMC is scheduled to meet on the last Sunday of every month (except May & December).

"There will always be poor people in the land. Therefore I command you to be open handed toward your brother and toward the poor and needy in your land." (Deuteronomy 15:11)

A 501c3 non-profit community organization

MAHALO!
 From the
North Shore Food Bank
 donations of non-perishable
 canned
 goods are accepted at the
 North Shore News Office
 637-3138




*Oceanside Chapel Service
 at Turtle Bay Resort*



Every Sunday at 9 a.m. in the beautiful oceanside wedding pavilion.

- Non-denominational 45 min. service
- Traditional & Contemporary music
 - 15 minute sermon
- All are welcome! Free validated parking

Hosted by Pastor Kurt Kamikawa
 808-358-6066
 Pastor Bob Major 808-681-8889
 Jamin Hiebert

*When church is pau,
 enjoy dining at the Palm Terrace,
 Hang Ten Pool Bar, or Lei Leis.



BRRRRR

It's been cold lately!
 Perhaps you have an
 extra blanket or two, used or new to
 donate to our homeless neighbors.
 Drop off blankets at the North Shore
 News office.
A Warm Mahalo

BULLETIN BOARD



Featuring the largest selection of certified organic produce on the North Shore. No panic...ours is organic. Open 7 days. Mon.-Sat. 9am-6pm. Sun. 9am-5pm

66-445 Kam. Hwy
Haleiwa, Hawaii 96712
Next to the Post Office
808-637-6729 • 808-637-1922 fax



DR. PORTER TURNBULL
Chiropractic Orthopedist
(808) 638-8740
Appointments available Mon.-Sat. (evenings by appointment)

- Industrial accidents & auto injuries
- Sports injuries • Spinal care
- Safe, Effective, and Gentle

N-C PLUMBING & SUPPLY

Cont. Lic. No. C-8913



- RESIDENTIAL & COMMERCIAL SALES & SERVICE
- CONTRACTING & DESIGN • HOME PLUMBING SERVICE
- PLUMBING FIXTURES, HEATERS • FREE ESTIMATES

Nestor P. Calilao (Owner)
P.O. Box 769
Waialua, HI 96791

Bus: 637-8662
Res: 638-5157
Cellular: 372-8718

email: nncplumbing@hawaii.rr.com



JAY OKU

Senior Mortgage Banker
NMLS # 218211

tel: 808.393.0707 fax: 888.961.8718
email joku@envoymortgage.com
www.jayoku.com



Restaurant & Margarita Bar

- DAILY SPECIALS -

Island Fresh Fish Tacos
Premium Margaritas

Large Parties Welcome Open Daily 9:30am - 9:30pm
637-3059 • North Shore Marketplace • Haleiwa
www.CHOLOSMEXICAN.com



COWPER CONSTRUCTION

LIC. #AG 18275

GENERAL ENGINEERING CONTRACTOR

Full Service Sitework Contractor
Septic Systems & Tanks
25 yr. exp.

Michael Cowper 638-7200
cowperhawaii.com

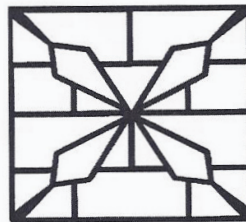
Farmer & The Baker LLC

(Formerly Mokuleia Landscape & Nursery)



Trees, Palms & Shrubs

Contact Us: 808-341-1992



GROVER MASONRY

Rick Grover

(808) 983-9331 cell

(808) 638-8120 office

rick@grovermasonry.com

License # C-18302

Munden Design & Build

Lic.#BC19632

Design • Plans • Permits • Construction
Additions & New Residences

808 391-8616

Providing quality work since 1978

North Shore Sports Therapy Massage

Special One Hour Massage @ \$50 (reg. \$70)
After Surf Special \$25 for 30 min.
expires 2/28/13

Michele Czara • Olympics Supervisor
• ASP • Rip Curl Team
Tele: 808-778-8443

Waiialua Library Authors' Night - March 7

Book lovers of all ages will enjoy this chance to meet real authors, ask them questions, and even have them sign their books at the Friends of Waiialua Library Annual Authors' Night

Date: Thursday, March 7, 2013

Time: 6:30 p.m.

Place: Waiialua Library,
67-068 Kealohanui Street,
Waiialua

There is something for everyone as these accomplished local authors each share a bit about themselves and their writing.

George & Willa Tanabe, Japanese Buddhist Temples in Hawaii - Learn from two authorities on Japanese art and religion the basic history, teachings, and practices of various buddhist denominations; with 350 color photographs. The authors live in Waiialua, and are both professors at the University of Hawaii.

Waimea Williams, Aloha Mozart - This award winning author from Kauai writes a compelling story of Maile, a Hawaiian woman who is lured from her beloved family and island paradise, to the rarefied and competitive world of opera in 1960 Salzburg, Austria. As Maile begins to succeed in this strange, straight-laced, Caucasian world, the complexities of politics, love, and ambition converge, and the book asks us to consider what, in the end, really matters. Courtnie Chang, Kolohe Iole, This delightful children's book follows a mischievous rat who ruins furniture, taunts the cat, and scares the family. Find out what valuable lesson Kolohe learns when the kids decide to catch him with a sticky rat trap. The story is enhanced by the gorgeous illustrations of Don Robinson.

Gabe Baltazar Jr., If It Swings, It's Music, Waiialua resident and world-renowned celebrity Gabe Baltazar Jr. has thrilled audiences since the late 1940s with his powerful and passionate jazz. In this autobiography, Gabe takes readers through the highs, lows, and in-betweens on the long road to becoming one of the very few Asian Americans who has achieved worldwide acclaim as a jazz artist.

Authors Night is free and will include pupu and door prizes.

Please call the library as soon as possible if ADA accommodations are needed for this program - 637-8286.

North Shore Neighborhood Board meeting

When: Tuesday, February 26,
7 p.m.-9 p.m.

Where: Haleiwa Elementary School Cafeteria

Sunset Beach Community Association meeting

When: Wednesday, March 20,
7 p.m.-9 p.m.

Where: Sunset Beach Recreational Center

Volunteers count whales in Hawaiian Islands Humpback Whale National Marine Sanctuary

Over 800 volunteers gathered data from the shores of Oahu, Kauai, and Hawaii island during today's annual Hawaiian Islands Humpback Whale National Marine Sanctuary Ocean Count. The count is a yearly shore-based census that provides snapshot data on humpback whales. Participants tally humpback whale sightings and document the animals' surface behavior during the survey.

Volunteers collected data from 59 sites statewide. A total of 267 whales were seen during the 11:30 a.m. to 11:45 time period, the most of any time period throughout today's count (57 sites reported data. Weather conditions and sea states were ideal for viewing humpback whales, but vog made seeing whales at a distance difficult.

Preliminary data detailing whale sightings by site location is available at:

<http://www.sanctuaryoceancount.org/resources/>

Two more Sanctuary Ocean Counts are scheduled to take place on Saturday, February 23 and March 30. For more information on becoming a Sanctuary Ocean Count volunteer visit sanctuaryoceancount.org or hawaiihumpbackwhale.noaa.gov or call 1-888-55-WHALE ext. 253.

The sanctuary which is administered by a partnership of NOAA's Office of National Marine Sanctuaries and the State of Hawaii through the Department of Land and Natural Resources (DLNR), protects humpback whales and their habitat in Hawaiian waters where they migrate each winter to mate, calve, and nurse their young.



The North Shore News is published every other Wednesday and mailed free of charge to all North Shore homes and businesses. Extra copies may be obtained at our office.

PRESS RELEASE POLICY: Submit press releases in person or by fax, mail or email to Editor, North Shore News, P.O. Box 1117, Haleiwa, HI 96712. Please type your releases and keep them shorter than 200 words unless they are of an unusual news interest. Releases should be viable news stories and are published on a **space available basis only**, with priority given to those received in our office first. You may attach photos. We are not responsible for the return of any photos. All materials are submitted at owner's risk. We reserve the right to edit and/or refuse all submissions including advertising.

EDITORIAL POLICY: We welcome articles and letters from our readers. Letters to the Editor are published on a space available basis only and preference is given to shortness of length, and quality of content. We prefer to run not more than one letter, per person, per 6 month period. Letters subject to edit.

Views expressed by our contributing writers and advertisers do not necessarily reflect the view of the management and staff of the North Shore News. All rights reserved. Reproduction in whole or part without permission is prohibited. © 2013.

Editor & Classifieds

Linda Seyler

Typography

Downtown General Store

Contributing Writers

Betty Depolito

Naty Hopewell

Choon James

Kalewa

Richard Sterman

City Councilman Ernie Martin

State Representative Lauren Cheape

State Representative Richard Lee Fale

CLASSIFIEDS

PAUMALU ELECTRIC

David C. Hancock
638-9054 / Lic#C18074

SHORE ELECTRICAL SERVICE

New Const-Remodels
638-0049 / Lic#C20777

Dog/Cat Nail Trimming

at your home only \$15.00
Call Julie 637-5395

Lawn Care For You

Mowing, Trimming, Light Hedging
Call Thomas 637-5839

EXPERT ELECTRICIAN

Fans, emergency services, etc.
Jim Richards 371-9369

PARADISE PLUMBING INC.

New Const • Repairs • Remodels
808-368-1473 / Lic. 29856

Handyman Services

Remodeling, Carpentry, Floors,
Concrete, all parts of Construction
Call Bob "The nicest guy in the
business" Ph. 282-2812

Greekz Plumbing LLC

Complete Service & Repair
Camera inspection/drain cleaning
"Got a leak? Call Steve the Greek"
808-372-1820

North Shore Massage

Maria Nicoli
375-3879/Lic#MAE2071

PIANO LESSONS

Guitar, Ukulele, Bass,
Songwriting
637-4635

J&L Services Haleiwa

Quality Landscape and
Garden Maintenance. Also
Pressure Washing, Hedges
and Plant Installation.
Call 673-1384 for est.

HARVEY'S REPAIR, LLC

24 hrs Towing Service
Specializing in opening
locked car doors
Call any time 478-0333

GERMAN CAR SERVICE

Professional-Qualified
Technician
Call Gary
637-6800

SHIATSU • LOMI

Aromatherapy
Milica Barjaktarovic
Lic # MAT8348
351-0848
HumanRemodeling.com

BOW WOW BUNGALOWS

Licensed Boarding Kennel
North Shore, Oahu
Reasonable Rates
Ph. 637-2562
These Dogs Have Fun!

Painting

RRP Certified
Licensed Lic#31602
Kamaaina Rates
Oahu Precision Painting
Skip Wunderlich 220-9083

Body by Tracey

Cardio, Strength &
Conditioning at
Sunset Elem. Pavillion
Mon/Wed/Fri @ 8:30am
Tues/Thurs @ 6pm
Contact (808)799-7214
or Traceybjj@gmail.com

ZUMBA FITNESS PARTY

Thursdays 6-7 pm
Waiialua Comm. Asso.
\$5 per person • \$2.50 for teachers
Contact Katie 808-778-1266

BIKRAM YOGA

See our new studio, anti-
microbial, anti-bacterial
carpet and more!
Please call for class schedule
637-5700

Offshore Plumbing, Inc.

Commercial * Residential
Septic * Solar * Design
Mike 630-1407
Steve 371-3451
Lic. #28113
steve@offshoreplumbinginc.com

BOBBY'S BODIES

Tuesday evenings at 5:00 p.m.
• Body Toning
Friday mornings at 9:00 a.m.
• Cardio Pump/Fat Burner
For more info: call Bobby, owner of
BOBBY'S BODIES at 637-4150

Aloha Computer

PC Repair/Virus Removal
Fax/Copy/Internet Access
372-2667 or 237-4558

Automotive Services and Restoration

• Auto Body & Paint
• Detail & Shampoo
• Upholstery
Rick Estrada - 216-9419

DWG / DESIGN / ARCH 753-0796

RETIRED ARCH SEEKS
RES & Sm Comm PROJ
CAD / HND DWG

REAL ESTATE NEEDS?

Call me . . . Dee,
Your NS Realtor
Dee-Ann KML
Kekahuna, RA
808-780-3249

HOW TO CONTACT THE NORTH SHORE NEWS

Letters to the Editor, and other items submitted for publication consideration may be sent to us via:

MAIL: P.O. Box 1117, Haleiwa, HI 96712

E-MAIL: NShoreNews@aol.com

FAX: (808) 637-8862

PHONE: (808) 637-3138

CLASSIFIED ADS

Individual Tax Preparation with emphasis on small businesses and rentals
40+ years experience
Jeannine Poling EA
638-5130

Pothole Hotline
768-7777

Your Clean Home
Vacation/Residential Home Cleaning
Affordable • Reliable
• Green Cleaning
For Free Estimate
Call 638-0262 or 782-9941

ANGELS PLUMBING
Repairs
Remodeling
Renovation

638-7878
Lic. #C12004

THE LAWN RANGER
Lawn Maintenance
no yard too hard
no lawn too far gone
We mow betta
258-6439 Dan Fatchett

Business Services Center
Fast & convenient fax, copy, scan, computer/internet, laminate, etc.
Across from Haleiwa post office.
North Shore Chamber of Commerce
637-4558 or 342-8557



Marianne Abrigo, Properties
Specializing in -
North Shore Real Estate
Ask for our list of available properties and/or a free market analysis.
Marianne M. Abrigo
"Realtor since 1974"
Office 637-3511
Fax 637-0777
Email mabrigo222@aol.com

GUTTER KING, LTD.
Rain Gutter Systems
Seamless Aluminum & Copper
Half round & Custom sizes
"senior, military discounts"
638-7246

Haugan Construction LLC
Build & Repair • Big & Small
Let's Talk
Steve 542-9269

HELP WANTED

BUSSERS/SERVERS
Pizza Bob's in Haleiwa is looking for BUSSERS/SERVERS. Experience preferred. Apply in person at 66-145 Kam. Hwy.

COOKS/KITCHEN HELP
Pizza Bob's in Haleiwa is looking for kitchen personnel. Experience preferred, but will consider training the right people. Apply in person at 66-145 Kam. Hwy.

Part Time Secretary
Must have computer skills and high speed internet access.
Fax resume to 638-7643

TRADITIONAL HAWAIIAN LOMILOMI MASSAGE
• 20+ Years Experience
• North Shore Studio
808-372-7649
Lolani222@gmail.com
Lolani Friedman

Retail Sales Surf & Sea
Hawaii's Ocean Sports Headquarters is always looking for hard working, energetic people to become a part of our sales team. Good pay, bonus, benefits. Ocean sports experience and/or bilingual a plus. Apply in person daily 9am-7pm
62-595 Kam. Hwy., Haleiwa

Next Issue - March 6, 2013
Deadline Date-Feb. 21, 2013

MISCELLANEOUS

Waialua Library Book Club
February 28
9:30 a.m.

Keep it Country
To report ILLEGAL VACATION RENTALS
call 768-8159 or 768-8118
You will remain anonymous
Illegal Vacation Rentals are ruining the North Shore
www.savenorthshoreneighborhoods.com

BEGIN WATERCOLOR
Jay Marr Art Gallery-Waialua
Tues. Evenings 6:30-8:30
\$30/class includes all supplies (go home with a painting!)
call 637-2562 for details

BEACH CLEAN UP
Chun's Reef - 10 a.m.
637-2211
Last Saturday of every month
adoptabeachhawaii.org

Ho'ola Like Waikiki Health
Center's North Shore
Clinic Queen Liliuokalani
Church 8:30am - 3:30pm,
Tuesday and Thursday

Voice of God Ministries
Jesus Loves You
If you need Prayer
Call 808-373-0294

North Shore Farmers Markets
Haleiwa: 3 p.m. to 7 p.m.
Thursdays, at Waimea Valley, Pikake Pavillion & Lawn.
Waialua Sugar Mill: 8:30 a.m. to noon Saturdays & Wednesdays 4:40 p.m. to 7:00 p.m.
North Shore Country Market: 8 a.m. to 2 p.m. Saturdays, Sunset Beach Elementary School, 59-360 Kamehameha Hwy.

FREE Senior Citizen Art Class
Jay Marr Art Gallery-Waialua
Last Tues. of the month
10 a.m. - 12 noon
supplies included - space limited
call 637-2562

OFF da ISLAND
Are you leaving Oahu on vacation or business? Do you live on a neighbor island, the mainland or foreign country and subscribe to the North Shore News? Try send us a photo of someone in front of a sign or landmark holding a copy of the NSN. Email your photo along with the person or persons' name, community of residence, telephone number and photo location to: NShoreNews@aol.com. Or, mail to OFF da ISLAND Photo, North Shore News, P.O. Box 1117, Hale'iwa, HI 96712. We cannot return photos so please send us a copy. Photos received become the property of NSN. Preference and priority will be given to emailed photos.

Please Report Stranded Sea Turtles
Call 983-5730 • Mon.-Fri., 7am-4pm
288-5685 pager wkends, holidays
587-0077 and after hours
Suspected Law Violations
541-2727 or 800-853-1964
NOAA Fisheries DLNR-DOCARE

Classified Ad Rates
3 lines (min.) \$18.89
4 lines \$25.13
5 lines \$32.45
1" Box Ad \$41.88
(29 characters in each line)
Include your contact information.
*Ads can be dropped off in mail slot, mailed, or emailed. Pay by check payable to: North Shore News or credit card by phone order.
We reserve the right to refuse any advertisement with a full refund.
North Shore News • P.O. Box 1117
Haleiwa, HI 96712 • (808) 637-3138
NShoreNews@aol.com

 Happy Birthday
Lisa Kekua

IGREJA EVAN. BRASILEIRA
Domingos 10:00 am
Quartas 7:30 pm
Sextas-Culto de Oraçao 7:30 pm
Voce e o nosso convidado especial
Behind Hale'iwa Post Office
637-5566
Pastor Luiz • 638-2212



MALAMA MARKET HALEIWA:
OPEN DAILY 7 AM-9 PM
808.637.4520

MALAMA MARKET MAKAILO:
OPEN DAILY 6 AM-10 PM
808.672.9955

Valid Dates:
2/20/13-2/26/13

Clementines 2/\$6



Cheetos, Fritos, or Funyuns Chips 2/\$5



Tony's Crispy Crust Pizza Selected Varieties, 7.04-7.8 oz.



Yoplait Yogurt 10/\$7 Selected Varieties, 4-6 oz.



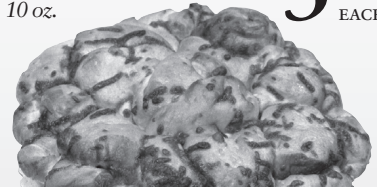
Fresh Ground Beef \$2.99 PER LB. 80% Jumbo Pack, 5 lb. More



All Liquid Laundry Detergent \$12.99 Selected Varieties, 150 oz.



Cheesy Bread \$3.99 EACH Selected Varieties, 10 oz.



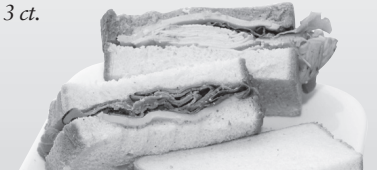
Raw Shrimp \$9.99 EACH White, 51/60 ct., 2 lb. Bag, Frozen



MOM's Best Cereals 2/\$6 Selected Varieties, 12-16.5 oz.



Variety Pack Sandwiches \$3.99 EACH Assorted Varieties, 3 ct.



Best Yet Vegetables 10 FOR \$10 Selected Varieties, 11-15.25 oz.



Gatorade All Star \$3.99 Selected Varieties, 6/12 oz.

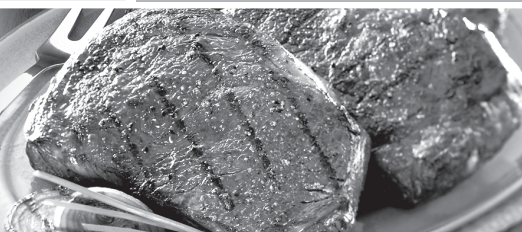


Crown Royal, Stolichnaya, or 1800 Tequila \$19.99 750 ml.



THURSDAY

INCLUDES:
7-8 oz. Steak
Rice • Tossed Salad • Drink



Grilled Steak LUNCH \$6.99

Hawaii Beverage Free of 1¢ per can or bottle will be added to purchase price at checkout. An Additional Hawaii Deposit fee of 5¢ will be charged for all specially marked beverage containers.

Limit five units (mix/match) per purchase, unless otherwise specified. We reserve the right to limit quantities. No sales to dealers. Prices plus applicable state tax. Hawaii EBT cards welcomed.