



“E Ala Na Moku Kai Liloloa”

**Lions 68th Annual Veterans
Memorial Day Program**
 Sunday, May 24, 2015
 10:00 a.m.
 Haleiwa Beach Park
 Public Invited



See Story Page 11

NORTH SHORE NEWS May 13, 2015 VOLUME 32, NUMBER 10



Jr. Lifeguards. Photo and Story By: Bryan Phillips

North Shore Junior Lifeguards 2015!

The North Shore Junior Lifeguard Program was created to increase the self-confidence, physical conditioning, environmental

stewardship, and ocean awareness of participants through their introduction to water safety, first aid, and surf rescue techniques. The

North Shore Lifeguard Association (NSLA), a 501c(3) non-profit, is hosting five 1-week sessions at Ehu-kai Beach Park for FREE! We offer a

Continued on page 2

66-437 Kamehameha Hwy., Suite 210
Hale'iwa, HI 96712

PRE-SORTED
STANDARD
U.S. POSTAGE PAID
Honolulu, Hawaii
Permit No. 1479

PROUDLY PUBLISHED IN
Hale'iwa, Hawai'i
 Home of the
Proud Peacock
 at Waimea Valley

Continued from page 1

safe, educational and fun learning environment for all ocean going kids. Participants learn all the same rescue techniques as trained NSLA lifeguards; cross chest carry, fins and tube, rescue board and jet-ski rescue techniques. Kids will also learn basic first aid and CPR. The program is a great stepping stone for anyone who is interested in becoming a lifeguard. The last few years, we have added an environmental and cultural component by taking the kids to Waimea Bay once a week where Uncle Bob Leinau gives an amazing talk story about Waimea Valley. Thursdays at the Bay is definitely a highlight of the program! On July 25th, NSLA is hosting the Oahu Jr. Guard Championships at Waimea Bay. The Jr. Guard programs from around Oahu are invited to compete in different running, swimming, paddling, beach flags, and lifeguarding events. There are individual winners of each event as well as an overall district winner. It is a great day of competition where the kids go hard to the wall! The winners of each division will win a ticket to compete as team Oahu for the Hawaii State Championships on the Big Island on August 1st! We hope to see you this summer!

Available to Ages 13-17 *MUST KNOW HOW TO SWIM
Sign ups: May 23 & 30 at Ehukai Beach Park
Donations accepted

SESSIONS:

- SESSION I JUNE 8 - 12
- SESSION II JUNE 15 -19
- SESSION III JUNE 20 – 26
- SESSION IV JULY 6 -10
- SESSION V JULY 13 – 17

Oahu Championships Saturday, July 25th at Waimea Bay, North Shore Oahu

State Championships Saturday, August 1st at Hanalei Beach, Big Island

For more info please go to www.northshorelifeguards.org or email northshorelifeguardassociation@gmail.com

ATTENTION!

On May 6, 2015 the storage containers belonging to Once A Month Church were broken into. The following items were stolen: 1 large white cooler. 50 metal folding chairs, 10 6ft. tables, 1 stove burner and 7 - 10x10 tents. If anyone has information please call 637-3138

Save the Date

- **Sunset Beach Community Association Meeting**
Sunset Beach Rec Center
Wednesday, May 20, 2015
7:00 p.m. – 9:00 p.m.
- **North Shore Neighborhood Board Meeting**
Haleiwa Elementary School Cafeteria
Tuesday, May 26, 2015
7:00 p.m. – 9:00 p.m.

66-037 Kam. Hwy., Ste. 3
Haleiwa, next to Growing Keiki

Saccoccio & Lopez
ATTORNEYS AT LAW
Serving Haleiwa since 1984

*Bankruptcy
Personal Injury • Criminal Law
Landlord/Tenant
Traffic Offenses • DUI*

Family Law
*Adoption • Custody • Divorce
Paternity • Guardianship
Deeds, and Wills*

Notary Public

637-7611
VISA/MC Accepted



Paul & Nita

The Hale'iwa Family Dental Center, Ltd.



presents

"Customized Dental Care"
featuring

- Prevention
- Cosmetics
- Gum Therapy
- Children
- Restoration Dentistry (Fillings, Crowns)
- New Patients Welcome!
- Ventures
- Emergencies
- Implants

Produced by Todd R. Okazaki, D.D.S. and Staff

"DON'T WAIT UNTIL IT HURTS"

Conveniently located behind First Hawaiian Bank in
Historic Hale'iwa Town
Call 637-9652 for your reservation

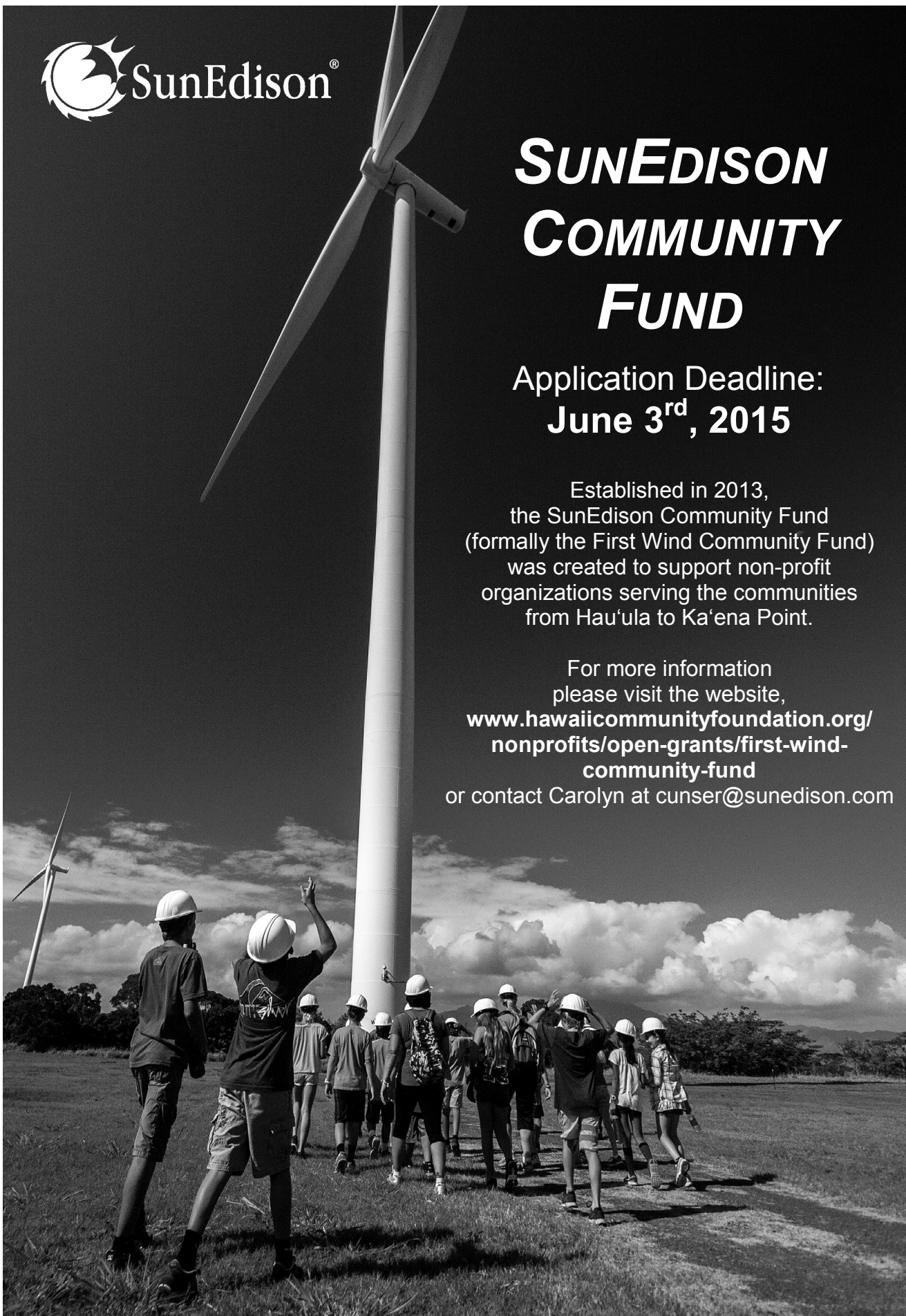


SUNEDISON COMMUNITY FUND

**Application Deadline:
June 3rd, 2015**

Established in 2013,
the SunEdison Community Fund
(formally the First Wind Community Fund)
was created to support non-profit
organizations serving the communities
from Hau'ula to Ka'ena Point.

For more information
please visit the website,
[www.hawaiicommunityfoundation.org/
nonprofits/open-grants/first-wind-
community-fund](http://www.hawaiicommunityfoundation.org/nonprofits/open-grants/first-wind-community-fund)
or contact Carolyn at cunser@sunedison.com



Hukilau MARKETPLACE
at the POLYNESIAN CULTURAL CENTER
LAIE, HAWAII

**THE BEST MIX OF LOCAL FOOD.
FROM MAUKA TO MAKAI.**

COME SAVOR ISLAND-INSPIRED CUISINE AT POUNDERS CAFÉ & GRILL AT THE HUKILAU MARKETPLACE. Enjoy Chef Sean Priester's refined yet rustic approach to food, featuring a menu of local produce and fresh ingredients. For reservations, call (808) 293-3287.

HukilauMarketplace.com

RED RAIDER SPECIAL!
Buy-1-Get-1 Half Off
any Pizza or Burger (after 7:30pm)

Pounders One coupon per person. Not combinable with any other offers. Expires 6/30/15.

FREE parking. FREE wi-fi.

POLYNESIAN CULTURAL CENTER

NSNMay15

Pounders Café & Grill at The Hukilau Marketplace

The Polynesian Cultural Center's new signature restaurant Pounders at the Hukilau Marketplace brings a new level of dining service to Oahu's North Shore featuring flavors from the Pacific Rim and throughout the world.

Named after Pounders Beach, a popular Laie body-surfing location, the full-service restaurant is open from 11 a.m. – 10 p.m. from Monday through Saturday, offering island-inspired entrees for lunch and dinner created by Chef de Cuisine Sean Priester. Priester brings more than 30 years of restaurant and hospitality experience to the Polynesian Cultural Center, including five years as the Executive Chef at Top of Waikiki. Most recently, he served as the owner and executive chef of Soul Enterprises under which he ran the popular food truck SOUL Patrol and Soul Restaurant, winning Honolulu Magazine Hale Aina Awards for Best New Restaurant (2011), Best Gourmet Comfort Food (2012), and Best Food Truck (2013). Priester takes a refined yet rustic approach to the Pounders menu featuring local, fresh produce and ingredients whenever possible. Items include familiar dishes like fried rice and saimin with a twist, and fresh pizzas baked in Pounders own kiawe-wood-burning brick oven, the centerpiece of the open kitchen.

Diners can enjoy air-conditioned dining inside, or relax on the covered, open-air lanai. The menu will eventually be expanded and the restaurant hours extended to offer breakfast service. HukilauMarketplace.com

Hale'iwa Elementary School Principal Wetzel Named Hawaii's 2015 National Distinguished Principal

Congratulations Principal Wetzel!

The National Distinguished Principals Program (NDP) was formed in 1984 to honor outstanding elementary and middle school administrators. The NDP acknowledges principals who set high standards for instruction, student achievement, character and climate for students, families and staffs in their learning communities.

This is where Principal Wetzel steps in, Wetzel became principal in 2009, at this time the reading proficiency was at 77 percent and the math was at 64 percent. Hale'iwa Elementary has been able to maintain the new high scores of 92 percent in reading and 99 percent in math each year. Hale'iwa Elementary had the highest math scores in the state at an elementary school in four of the five years Wetzel was principal. Hale'iwa Elementary School and Principal Wetzel was also named a National Blue Ribbon school in 2014.

Principal Wetzel along with the other state winners will be recognized in Washington, D.C. October 15 and 16 which includes a U.S. Department of State reception, with opportunities to discuss issues facing education today and a black-tie awards dinner and dance.



Council Chair
Ernie Martin
Serving You in District 2

**Baguio City Sister City Celebrates
20th Anniversary**

On November 3, 1995, the Honolulu City Council formally adopted Resolution 95-349, authorizing the establishment of a Sister City Agreement with Baguio City, Philippines. In that same year, the Baguio City Council adopted a similar measure. This was the culmination of a historical connection between the two cities that began in 1906, when the first plantation workers from the Philippines arrived in Hawaii. In that group were about 15 Baguio residents. Many of their descendants reside in Honolulu to this day.

Since 1995, the relationship between the two cities has experienced a slow but steady growth in various areas. A residential shelter for street children was established in the late 1980's through Honolulu's Child and Family Service with funding from the Consuelo Foundation, which is headquartered in Honolulu. Over the years, the Foundation developed partnerships with the Baguio Center for Young Adults, Inc. and Child and Family Service Philippines, Inc., in Baguio to support programs for Early Childhood Care and Development, Youth and Women Empowerment, Child Abuse Prevention and Advocacy, and Protection and Recovery of victims of child sexual abuse.

The Rotary Club of Honolulu has developed a number of community civic building projects, most notably in 2009 when it sent 27 people from Honolulu to Baguio to help build a Welding Training Center at the nonprofit Child & Family Service, Philippines (CFSPI). Medical missions to provide much needed or unavailable healthcare services in Baguio have been conducted by various Hawaii medical professionals, including the Aloha Medical Mission. Among educational institutions, student exchanges have been ongoing between Baguio's Saint Louis University and the University of Hawaii, Chaminade University of Honolulu, and Hawaii Pacific University.

Perhaps the most dynamic area of activity has been in business and commerce.

- Hawaiian Airlines' global call center was once based in Baguio.
- The daughters of Miguel and Edna Anton, owners of the popular Baguio restaurant chain, Sizzling Plate, are successful business people in Honolulu. Marcia Anton, president of Anton Financial, specializes in helping public employees with their retirement and investment needs. Her sister Margo

Munden, is a realtor with Hawaiian Island Homes.

• Sid Baquilar, a former City and County of Honolulu employee, owns Danalex Corporation, a graphic arts, web design and software company that relocated from Honolulu to Baguio.

• The Filipino Chamber Commerce of Hawaii has conducted several trade missions that visited Baguio over the years. A 2014 trade mission to Baguio witnessed the reaffirmation of the Sister City relationship between Baguio Mayor Mauricio Domogan and Honolulu Mayor Kirk Caldwell.

These historical relationships and continuing activities support the intent of establishing Sister City relationships, which is to open a bridge between cities that have natural affinities in order to openly engage in a free exchange of intergovernmental, economic, educational, humanitarian, legal, and cultural agendas for the mutual benefit of our people.

Attention Home School & Private School Grads
We want to recognize home school and private school graduates along with the graduating seniors from Kahuku and Waialua High (that reside in the North Shore community).
Please email names, school affiliation and a contact phone number to:
NShoreNews@aol.com



PAALAA KAI BAKERY

Your Hometown North Shore Bakery
Order By Phone! (808) 637-9795
66-945 Kaukonahua Rd Waialua, HI 96791

Mahalo Veterans!

Enjoy Memorial Day with your family and a dozen delicious treats from PKB!

Flip the page to find our Cinnamon Finger Puffs Super Saver Special....

North Shore POLO!!

On the beautiful shores of Mokuleia,
Hawaii Polo Club is just getting warmed up...
and it's too hot to miss the action~

LIVE MUSIC
5-7 AT
THE CHUKKER BAR
\$5 after 5



Tailgating
Precision Skydiving
by
Skydive HI

***May 24-Memorial Day Weekend**
Special events planned to honor our soldiers
(New Zealand battles Hawaii)

***May 31-"It's a Dog's Day",**
Dress up your pet contest: A day dedicated to the ones we love the most..
Prizes for small, medium, and large breed categories.
Artist Sara Wakayama onboard to sketch your pet

\$12.00 general admission \$10.00 military \$25.00 clubhouse seating
Gates open at 11 matches begin at 2. For more info go to
<http://www.hawaii-polo.org>

NOW OPEN!

PIPELINE GALLERY

Exclusively Featuring
the work of the
World's best
surf photographers.

DIVE IN MEMORIAL DAY WEEKEND

For special deals and
an opening celebration!

66-165 kam hwy, Haleiwa
next to Lui Bueno's
www.pipelinegallery.com

IG:pipelinegallery FB:Pipeline Gallery



MOON WALK

Sunday, May 31
7:45pm • \$10/person

Experience the Valley at night!
Please call for reservations
(recommended)



3rd Annual CONCERT SERIES

JUNE 27 • JULY 25 • AUGUST 22

ARTIST LINEUPS & PRESALE TICKETS:
WAIMEAVALLEY.NET



Come Try Our
Updated Menu!

The Proud Peacock RESTAURANT

Thursdays - Saturdays

Happy Hour: 4 - 6pm
Dinner: 4 - 9pm



On the North Shore across from Waimea Bay

Open 9am - 5pm Daily

Call: (808) 638-7766

WAIMEAVALLEY.NET

WHERE HAWAII COMES ALIVE



Country Talk Story with Choon James

There have been many questions about Fee Simple versus Leasehold ownership in Hawaii and especially in Laie.

The best and highest bundle of property rights is to own property in FEE SIMPLE. This means that, on top of owning the house dwellings on the real property, one also owns the land under the houses.

LEASEHOLD means that the land under the dwelling is rented for a period of time, usually with monthly lease rents. For example, most of the land in Laie used to be LEASEHOLD. Property owners paid their monthly lease rents to Zions Securities, Inc, who was the land agent for Deseret Title Holding Corporation, in Salt Lake City, Utah.

This arrangement was meant to assist with home ownership but also allow the landowner control of its assets. In the 1970s, the Church College of Hawaii, now known as Brigham Young University - Hawaii, faculty members enjoyed a rare once-in-a-lifetime opportunity. The faculty and some others could simply choose a piece of land in Laie to build their homes. (Many condominiums in Oahu were also built with the Bishop Estate and big land owners as Lessors.)

In Laie, the Leasehold arrangement usually was a 55-year Lease Agreement with fixed 5-year incremental lease rent increases for the first 25 year.

The renegotiation of lease rents and terms after the 25th year was also in the Lease Agreement. The lease rents were to be tied to the market value of the land. There was also a SURRENDER CLAUSE at the end of the lease if there was no mutual agreement between the LESSOR (owner) and the LESSEE (renter).

Generally, there was benign acceptance of this measure in Laie until the time for renegotiation became eminent. Lessees became very worried about the big jump in lease rents, in addition to their regular mortgage payments. It was logical to see that real estate prices would appreciate after 25 years. However, many had a hard time with these significant increases.

On top of that, lenders would not provide a 30-year mortgage if the lease term was shorter than that. Some lessees also felt targeted and penalized, thinking that others enjoyed favoritism during the lease negotiation or extension of lease terms. Some had a very difficult time separating between church and business dealings. It was an intense period of turmoil and angst in Laie.

The Laie Community Association leaders including Lucky Fonoimoana, Roger McKenzie, Yvonne Curnow, Lance Chase and Ken Baldrige undertook a vigorous case on behalf of the lessees in Laie. Deseret Title Holding Corporation along with Marvin Stone, Manager for Zion's Securities understood the plight of the people and were desirous to have "Zion's Securities out of the lives of the people in Laie."

In and around 1987, much of the leasehold properties

in Laie were offered LEASE-TO-FEE conversion with the able and bold leadership of the Laie Community Association. Each participant in the lease-to-fee conversion were also required to contribute to the LCA. All in all, about \$300,000.00 was given to LCA. Every new owner also became an automatic lifetime member of the LCA.

Desert Title Holding Corporations became Property Reserve, Inc. (PRI) in SLC and Zion's Securities Corporation became Hawaii Reserves, Inc. (HRI), a for-profit corporation in Hawaii as land agent.

Even then, some were initially denied fee conversion, such as properties around the Laie Stake Center near the old McDonalds. There was a proposal of extending the Laie Shopping Center along Kamehameha Hwy towards the Naniloa Loop junction. At the site of the Tovo/Francisco houses, there was a proposed Court House!

Generally, it's logical to surmise that leasehold properties are not good investments or secure for families who want to remain in their homes for the foreseeable future. The devil would be in the details of a leasehold agreement.

Real estate values inevitably rise in value to provide the fee simple owner some equity nest-egg.

However, a leasehold property is usually the opposite. When the lease term becomes shorter and shorter in years, the LESSEE (renter) loses its equity value while the LESSOR (owner) gains its equity value in the land.

Choon James has been a real estate broker for over 20 years. She hosts "Country Talk Story" on Olelo Television every Friday at 5:00 pm on Channel 54. Choon can be reached at 808 293 9111 or ChoonJamesHawaii@gmail.com



PKB'S SUPER SAVER SPECIAL

**Cinnamon Finger Puff
BONANZA!**

**Try our new
Cinnamon Finger
Puffs ONLY AVAILABLE
on Tuesdays,
Wednesdays,
and Thursdays!**

**Buy six, receive
25% OFF
another six!**



PAALAA KAI BAKERY

Your Hometown North Shore Bakery
Order By Phone! (808) 637-9795
66-945 Kaukonahua Rd Waialua, HI 96791

VALID FOR DISCOUNT SIX CINNAMON FINGER PUFFS. COUPON VALID UNTIL MAY 28, 2015.
CANNOT BE COMBINED WITH PKB DABEST DISCOUNT, OTHER PROMOTIONS, OR SPECIALS.



**Representative
Lauren
Matsumoto**
Serving You in District 45

Aloha,

The 2015 Legislative Session has ended! All bills that have survived the process will make their way to the Governor’s desk for approval to become Acts, or to be vetoed. I want to say “Thank you” to all of you who participated in testifying or calling your Legislators on these bills. Your diligence is what pushed many of these bills through the process, and is such a crucial aspect of any success they achieved.

I know it can be frustrating if the bills you cared about did not make it to the final vote. But fear not: any bill that was considered this Session can be reconsidered next Session. Now is the best time to contact your Legislators to let us know which issues you want us to work on, as there is ample time to do the necessary research that accompanies bill drafting. By starting now, we can ensure that there is a high-quality bill ready to be submitted early in next year’s Session.

Of all the bills to be sent to the Governor, there are several in particular that I am looking forward to seeing signed into law:

Historic Preservation Home Exemption HB830: Excludes private residences from the historic preservation review, unless they are registered with the Hawaii Register of Historic Places, making common home improvements easier for old homes.

Good Agricultural Practices Program HB573: Establishes the Hawaii good agricultural practices program to develop and support good agricultural practices for farms growing food.

Epinephrine pens in schools HB10: Authorizes Department of Education employees to volunteer to administer epinephrine pens to a student with anaphylaxis in an emergency situation. Allows students



with diabetes to self-test and self-manage their illness. **Sex Trafficking SB265:** Helps move forward the removal of stigmatizing girls caught in sexual slavery by focusing the criminality on the promotion of sex trafficking.

Look for more Legislation that could affect you in my End-of-Session newsletter coming to you in the mail. Also please sign up for my email newsletter so I can continue to keep you apprised of all the things going on in the Capitol. You can sign up on my website www.RepMatsumoto.com

**FREE AROMA TOUCH TECHNIQUE
OR
REIKI ENERGY HEALING SESSION**

Help us kick off our ‘2015 Drive To Better Health on Our North Shore’ by helping us test our new **Free Natural Health Study Kit**. Experience one of our 2 most powerful techniques for improving over-all health from our Reiki Master. To qualify, just **apply for our Health Study** and 1-Sample a few of the most amazing natural medicines that Mother Nature has to offer, 2-Watch three short and awesome videos regarding taking charge of your family’s healthcare at home and 3-Attend a short Reinventing Healthcare class. www.healthstudy.myhhac.org

What you will experience and learn, could change your health and life forever.
www.2015drive.myhhac.org

Apply to take our Natural Health Study by sending an email to:
healthstudy@myhhac.org
Call our Program Director at 753-6220

Haleiwa Evangelical Mission International
Come and join us
Sunday’s at Waialua
Elementary School Cafeteria
Sunday School at 9:00 am
Worship Services at 10:00 am
For Prayer
Call 637-4567
Blessed to be A Blessing
“Children’s Church”





State Representative
Feki Pouha
Serving You in District 47

TURTLE BAY CONSERVATION EASEMENT

Last month, I reported that Senate Bill 284, which would enable the financing of the Turtle Bay Easement purchase by the State, passed out of the House Water and Land Committee and was then referred to the House Finance Committee. I am pleased to report that SB284 passed out of the Finance Committee and passed 3rd Reading on the House Floor as well.

After meeting with Governor David Ige, along with both House and Senate leadership and City and County of Honolulu officials, an agreeable deal financing the Turtle Bay conservation easement was announced in a joint press-conference last week. Community representation at the meeting and press-conference included The Trust for Public Lands, the North Shore Community Land Trust, and representatives from Turtle Bay Resort.

I am grateful that all parties were able to come together and collectively commit to reaching a deal. Last week Friday (5/1/15), SB 284 SD2 HD2 CD1 passed unanimously out of Conference Committee, with both the House and Senate Committee members agreeing on Conference Draft 1. This bill will be up for a final vote on both the House and Senate Floors this week.



HONOLULU RAIL PROJECT

Mahalo to all those who came out to the Rail Project Town Hall meeting in Waialua on April 21st. Brennon Morioka, an official from HART (Honolulu Authority Rapid Transit), gave a presentation to community members on the status of the rail project. The presentation included an explanation of the costs and benefits of Rail, in addition to an update on current construction. Concerns that were voiced

by community members included: prices for senior citizens, accessibility for North Shore residents, and traffic conditions during construction.



It has been well documented that HART's projections for future construction puts them over their current allotted budget. Current legislation seeks to remedy this fact. House Bill 134, introduced by House Speaker Joe Souki, would allow the county to extend the county surcharge on state tax in an effort to fund the rail transit project. The current version of the bill (HB 134 HD1 SD2 CD1) would extend Oahu's 0.5% general excise tax surcharge for another five years through 2027.

HB134 HD1 SD2 CD1 passed out of Conference Committee last week and is up for a final vote in both the House and Senate as the session comes to a close this week.

The 2015 Legislative Session will be adjourning on Thursday, May 7. I want to thank you for the privilege of representing District 47. It has been a great honor to serve you all. As always, feel free to contact my office if you have any questions or concerns. You can reach me by phone at 586-6380 or by email at reppouha@capitol.hawaii.gov. Also, don't forget to look me up on Facebook at [facebook.com/HouseDistrict47](https://www.facebook.com/HouseDistrict47), or visit my official website at www.repfekipouha.nationbuilder.com. Mahalo!

BREAKFAST

7 AM to 10:45 AM DAILY



Haleiwa Town Center - 637-5095

\$2.00 Off with this Coupon

Some Restrictions Apply. See Restaurant for Details.
When Ordering Regular Priced Items. Good Anytime. One Coupon Per Person.
Can Not Be Combined with Other Discounts. Expires 09/30/2015.



SAFETY ALERT: FRUIT-PICKING SEASON

Overhead power lines are energized and can be dangerous.

Trees whose branches are growing into power lines can conduct electricity to the ground, putting anyone who contacts the trees at risk of being shocked.

For your safety, remember these important safety tips:

- Avoid coming into contact with overhead power lines directly or indirectly.
- Don't climb trees whose branches are growing into power lines.
- Don't pick fruit from trees whose branches are growing into power lines.
- Keep yourself and your ladder, fruit picker, pole, or other tools at least 10 feet away from power lines.

If you see trees growing into overhead power lines, call Hawaiian Electric's Trouble Line at 1-855-304-1212. In an emergency situation, call 911.



Hawaiian
Electric

www.hawaiianelectric.com

Olakino Maika'i

(Good Health)

by Naty Camit Hopewell

Atrial Fibrillation: Part II

To review, atrial fibrillation (AF) is irregular, rapid heart rate that causes poor blood flow to your body resulting in symptoms such as weakness, palpitations, reduced ability to exercise, shortness of breath and chest pain.

To diagnose atrial fibrillation, several tests may be ordered but the most important test is an EKG, which shows the electrical signals in your heart. Other tests may include an electrocardiogram (video image of your heart in action), blood tests and a chest x-ray.

The goal of treatment is to normalize the heart rate and rhythm. This is done in a variety of ways: electrical shock to the heart; medication; and destroying the "hot spots" in the heart that are causing extra discharges.

People with AF and those being treated for AF are at high risk for blood clots that can lead to strokes. Consequently, "blood

thinners" are prescribed. The most common medication is warfarin (Coumadin). This is an inexpensive medication but requires periodic blood tests to ensure that you're taking the right amount. Taking too much could result in dangerous bleeding. There are newer medications that do not require blood tests. These are more expensive and some medical insurance policies do not cover them.

If you have AF, you want to improve your general health, which affects your heart. The following approaches will help: eat a healthy diet rich in vegetables, fruit and whole grains, low in salt and solid fat; exercise regularly; quit smoking; maintain a healthy weight (being overweight increases the work load on the heart); keep blood pressure and cholesterol levels with normal limits; and drink alcohol and caffeine in moderation.

Lions 68th Annual Veterans Memorial Day Program Honoring 100th Infantry Battalion Veterans: Masaharu Saito (92) & Ted Hamasu (95)

By Lion Jake Ng, PDG

The public and community members are invited to attend this historic "Memorial Day" event on Sunday, May 24, 2015 commencing at 10 a.m. at beautiful Hale'iwa Beach Park, overlooking scenic Hale'iwa Bay. This event has been sponsored by the Waialua Lions Club for over 68 years. This year's Memorial Day program will honor two 100th Infantry Battalion veterans, who are 92 and 95 years of age. There will also be an outstanding speaker, who will be representing the veterans, a military color guard, the Waialua High School students' band, churches, leis and wreaths for our departed heroes from the community.

The history of the Waialua Lions Memorial Tower goes back some 68 years. Twenty-six Members of the club, led by the late Lions member Walter Tanabe, who was responsible for the design and construction of the Memorial Tower at the Haleiwa Beach Park. This tower has withstood many high waves and several Tsunamis. The memorial tower was dedicated on July 4th, 1947 with the presence of the military, churches, veterans, and community members.

The North Shore communities have a history of many war veterans who served their country well and gave their lives for our nation. During World War II, many of our young men volunteered to join the famous 100th Battalion, the 442nd Regimental combat team, military intelligence units, and other military units and regrettably, sixteen young men made the ultimate sacrifice. During the Korean

Conflict, the 5th Regimental Combat Team stationed at Schofield Barracks with many of our young men was one of the first units sent to the Korean Peninsula. Again, sixteen of our young men did not return. In the Vietnam War, many of our youths assigned to the 299th and 298th Divisions at Schofield Barracks were sent to do battle in Vietnam and twelve of our war heroes paid the supreme sacrifice. The names of these North Shore veterans are inscribed on plaques located on three sides of the memorial tower. No-where else, has a community lost so many young men in three wars and at the same time had their names enshrined in a single memorial tower with a beacon as a symbol of eternal peace and goodwill.

The Memorial Day celebration sponsored by the Waialua Lions Club is made possible through partnerships with other lions clubs from Wahiawa, Mililani, and Central Oahu, the military at Schofield Barracks, Waialua High School, North Shore Rentals, McDonalds of Haleiwa, Veterans organizations, Rev. Taiken Akiyama of the Haleiwa Shingon Mission, many organizations and businesses in Waialua. The public is invited to attend this Memorial Day service on Sunday, May 24, 2015, starting at 10 a.m. with a band concert by the Waialua High School Band.

Please contact Lion Jake Ng, 637-5814 or Lion Beth Maurer, 371-8611 for more info on the program or on how to join the Waialua Lions Club, a sixty-eight year old community service organization.



Bill Romerhaus

**SUNDAY,
MAY 24, 2015
10:00 AM
HALEIWA BEACH
PARK
WAIALUA LIONS
MEMORIAL TOWER
PUBLIC INVITED**

You Are What You Breathe, Eat and Drink

On April 18th, The North Shore Outdoor Circle and Celestial Natural Foods sponsored an educational forum, "You Are What You Breathe, Eat and Drink". It was well received by more 125 guests at the WCA in Haleiwa. The event featured expert speakers who presented the latest scientific research on the serious health consequences (including autism) of potential pesticide drift caused mainly by large-scale agricultural operations. We learned that there are currently **1,381** test sites experimenting with pesticides in Hawaii and that the World Health Organization has declared Glyphosate (Round Up) a probable carcinogen.

Dr. Lorrin Pang, MD, MPH, addressed the risks of exposure to the "combination effect" of the over 80 Restricted Use Pesticides (RUPs) being sprayed simultaneously. The Center for Food Safety is releasing an extensively researched study on May 6th, 2015, documenting the effects and extent of agricultural pesticide use on Oahu. Go to: www.centerforfoodsafety.org for more information.

Both young and old in the audience were grateful and requested further information wanting to know about avenues to affect change. Below is the response to those requests. Please go to our website, <http://www.outdoorcircle.org/north-shore.html>, join our organization and "Like" us on Facebook. In case you missed this educational forum, Olelo54 recorded it: "The Drift", airing: 5/31 6 PM, 6/1 8:30 AM, 6/5 2:30 PM, 6/6 11:30 AM

Steps you can take NOW to make change happen:

1) Call and email your Legislators to tell them that you want disclosure and more regulation of pesticide use on the Islands, such as they have in CA.

-Rep. Lauren Matsumoto (586-9490) repmatsumoto@capitol.hawaii.gov

-Rep. Feki Pouha (586-6380) reppouha@capitol.hawaii.gov

-Sen. Gil Riviere (586-7330) senriviere@capitol.hawaii.gov

2) Call Kalani Fronda, Senior Land Asset Manager for Kamehameha Schools to tell him you want Hawaii's lands leased/sold to local farmers for growing food that will sustain us versus to large agricultural companies growing experimental seeds that are shipped off-Island and who overload the soil with toxic pesticides. (637-2436) northshore@ksbe.edu

3) Go to www.Centerforfoodsafety.org and sign petition to create buffer zones around our schools and residential areas and request to be added to the email list or call 681-7688.

4) Call every large Agricultural Company on the North Shore and request:

-The Kauai "Good Neighbor Program" be put in place immediately.

- Ask to be told what is being sprayed around you and when and ask to have your name put on an email list to be alerted before every pesticide application.

-Monsanto: Caleb Dorman- Operations. Mngr. (637-2676) Alan Takemoto- Community Affairs Mngr.(685-8371)

-Pioneer/Du Pont: Richard McCormick, Managing Director (637-0100)

-Syngenta: Andy, Manager North Shore Spraying (688-1477)

5) Call the Department of Health (586-4200) and request a local study be done to measure any effects of pesticide use on our community.

6) Call the Board of Water Supply (748-5080) to request more frequent testing of drinking water for a wider range of RUPs in use.

7) Call Rep. Clifton Tsuji, (586-8480) Chairman of House of Rep. Ag Committee to ask that he pass pesticide drift regulations.

8) Call Mayor Caldwell (768-4141) and Governor Ige's Chief of Staff, Mike McCartney (586-0034) and the Department of Agriculture (832-0690)

- Say you want regulations on pesticide use and disclosure enforced, made public and increased.

- Ask that land sales/grants/leases be made to favor the small farmer who grows food to sustain us versus to large agricultural companies growing experimental seeds that are shipped off-Island.

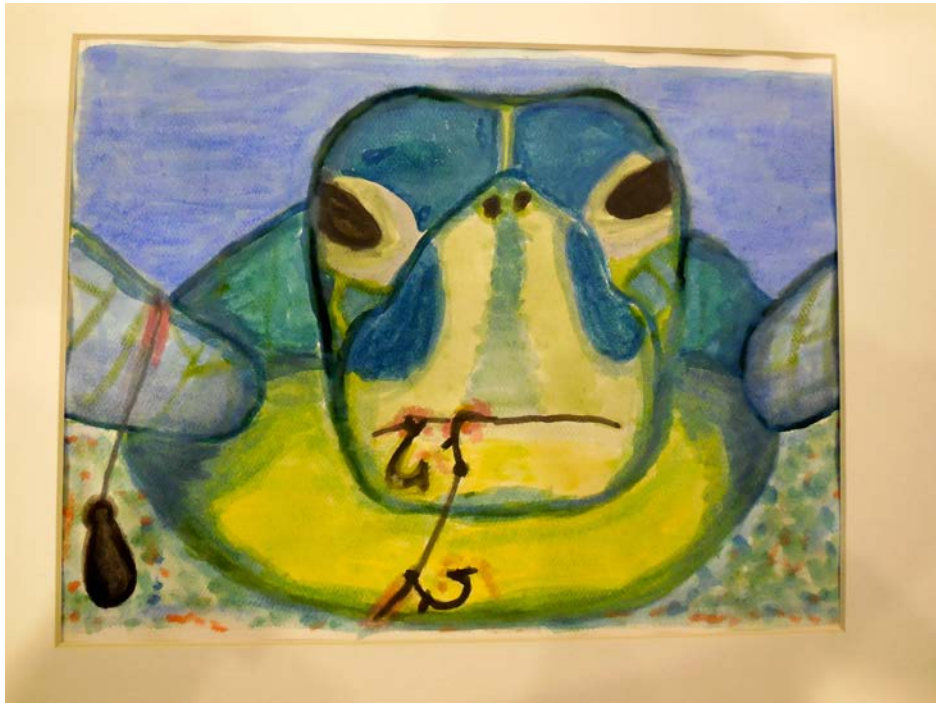
Resources: <http://www.globalresearch.ca/world-health-organization-wont-back-down-from-study-linking-monsanto-to-cancer/5439840>

<http://ucdmc.ucdavis.edu/publish/news/newsroom/8978/>

<http://www.ewg.org/release/world-health-organization-labels-glyphosate-probable-carcinogen>

https://www.youtube.com/watch?v=N6_DbVdVo-k

North Shore Ocean Fest – A Benefit for Ocean Education for Children from Waialua to Kahalu’u



Fourth-Annual North Shore Ocean Fest is June 6, 2015 at Turtle Bay Resort, A FREE Family Event All About the in Ocean A Benefit for Ocean Education Enrichment Programs

NORTH SHORE, OAHU, HI – Turtle Bay Resort will once again host one of Oahu’s premier community events, bringing together top ocean educators, activities, film, food and ocean crafts and food vendors, live music, hula and lots of great prizes. Enjoy a free, fun-filled afternoon of ocean education for all ages.

Themed “Protect Our Ocean Wildlife,” the highly anticipated North Shore Ocean Fest annual fundraiser to benefit the North Shore Ocean Education Coalition will be held **Saturday, June 6, 2015, from 11 a.m. to 4 p.m.** on the Bayview Lawn and beach at Turtle Bay Resort. The event also honors “[World Oceans Day](#),” celebrated annually on June 8 since 2002 to promote ocean education worldwide.

“This celebration of ocean education and sustainability continues to grow each year, drawing hundreds of participants from around Oahu,” said Dotty Kelly-Paddock, coordinator of the North Shore Ocean Fest. This year’s Ocean Fest will be our best yet, offering an action-packed schedule of free keiki activities, both in and out of the water, to promote environmental conservation.”

The Ocean Fest also features K-12 student art and poetry celebrating ocean wildlife. Entries for 2015 will be displayed at the North Shore Ocean Fest and winners will be recognized at a special awards ceremony. The Honu featured above is the 2014 Grand Prize winner by Dagan Da Weese, Kahuku HS.

Ola Restaurant at Turtle Bay Resort will host a Beach Party Benefit on June 5, Friday evening from

Talking Story with Tom Jacobs

A Memorial Day Prayer

This paper's issue celebrates Memorial Day, so I took a hike down to the Lion Club's War Memorial on Kam Highway at the edge of Haleiwa Beach Park. I read again the 45 names on the plaques on three sides of the memorial, North Shore boys killed in World War II, Korea, and Vietnam. Their names celebrate the diverse, colorful nature of the beautiful part of Oahu where we live: Hawaiian, Japanese, Filipino, Haole ... other names harder to type as to heritage.

I was given the honor and privilege of speaking at the Lions' Club memorial service some years ago ... an honor I don't take lightly after 30 years' active duty in the Navy and in submarines. For that service I read a poem, a prayer, really, to remember each name on the memorial. And to honor those who have served after them.

I've updated that poem a bit. Here it is.

Dear God, we pay our homage to
These North Shore boys, these heroes who
Gave their lives and futures for
Their country in three long, hard wars.

Each name that we see inscribed here
That we remember every year
Each died to give us liberty
They bled and died to keep us free

But there are men, and women too
Who fight today for freedom, who
Step up and raise their strong right hand.
Who pledge to serve their native land.

Dogface soldiers, strong and lean
Jarheads, tough U. S. Marines
They draw a line, they make a stand
In Iraq and in Afghanistan.

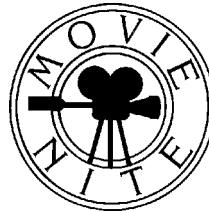
And so protect from combat's storm
Lord, all who wear our uniform.
Keep them whole 'till that day when
You bring them safely home again.

At home, Lord, there are other lives
Infant children, teen-aged wives
Who pray to you through anxious tears.
Be with them, Lord, and calm their fears.

Give families solace as they pray
For their loved ones far away.
Give them courage, help them through
Because they serve their country too.

Oh Lord, look down on all of these
Who fought Koreans, Vietnamese
Italians, Germans, Japanese,
And now who fight the Taliban,
Al Qaeda, ISIL, turbaned men
Oh, Lord, we lift them up to thee,
All these brave souls who keep us free.

Copyright 2008 Pau Pono Publishing



Kahuku Library Movie Night ANNIE

Tuesday, May 26, 2015
at 6:00 p.m.

WAIALUA FARMERS' CO-OP MARKET

WAIALUA SUGAR MILL GROUNDS
SATURDAYS
8:30 A.M. - 1:00 P.M.

BUY DIRECTLY FROM FARMERS

KAHUKU FARMS
WAIALUA FRESH
FIELDS OF ALOHA
TWIN BRIDGE FARMS
DEL'S TROPICAL FLOWERS
T & L FLOWERS AND PALMS
WAIALUA COOPERATIVE FARMERS

FOOD VENDORS

NOK THAI COOKING HAWAII
MARIZA BICOL EXPRESS: FILIPINO FOOD
AND MORE

A MARKET MANAGED BY FARMERS
EDITH: 637-8589



BANZAI NORTH SHORE WIRELESS

Randy Rarick and Sunny Garcia were honored at the Hawaii Sports Hall of Fame in Honolulu. Professional surfing co-founder, Vans Triple Crown of Surfing Executive Director, and global surfing icon Randy Rarick announced his full retirement at Honolulu Country Club. Rarick was inducted as a "Pioneer" and will forever stand as a Legend of the sport of professional surfing. He now passes the torch to a newly-structured WSL Hawaii team that will be led by General Manager Jodi Wilmott. Randy's combined passions of surfing, surf travel and professionalism have paved the way for generations of surfers to date and the positive impacts of his contributions will be felt for generations to come. Inducted alongside Rarick was Hawaiian Sunny Garcia, 2000 ASP World Champion and 6X Vans Triple Crown of Surfing Champion, whose superlative career has spanned 30 years under Rarick's watch. Garcia has accepted a position as Youth Mentor and Development Officer with WSL Hawaii, and will work with the regional team to support up-and-coming local talent through mentoring, competitive guidance, and developmental opportunities.

Hawaii's big wave current World Champion Makuakai Rothman killed it at the Quiksilver Ceremonial Chili event, the first contest of the 2015-16 season. The surf was hugh from a swell generated way down in the southern hemisphere. Rothman won last years event also, making it two in a row at the big wave spot and he kicked off what could be two world titles in a row.

There is a new exhibit in the SHACC, the Surfing History and Cultural Center in San Clemente California. It's all about the timeline of Women who were the trailblazers for the sport. It included a team I was on, The "California Golden Girls," which was organized in 1975 by legend Jericho Poppler. The idea was to work together to garner more exposure for women surfers on an international level. Things have not changed much, we are still at work and plan on doing an event at Mailibu in 2016 along with WISA, the Womens International Surfing Association which was founded in 1975 and recently had their 40th reunion. Stay tuned.

The Big Wave XXL awards were held May 1st in California and it was a Hawaiian who was the BIG deal. Shane Dorian from the Big Island took top honors winning the Performance award and Best Wave award. Dorian won 55 thousand dollars for his efforts. The biggest wave award went to a German



Shane Dorian, right, big winner at the XXL awards. Paige Alms middle in red, the Womens "Performance Award" winner!



surfer Sebastian Steudtner. The wave he rode was estimated at 71 feet. Only one award was given for female big wave riders, the best overall performance award went to Maui's Paige Alms for a tube ride she mastered at 15-20 foot Piahi, "Jaws."

The World Surf League has cut a big deal with Jeep. Jeep automotive will become the first ever global auto partner they have secured. The official vehicle will be given to the men's and women's WCT World Champions at the end of the year! Also Tag Heuer is now the official watch for the big wave world tour. This is great news as there has been much speculation on how the tour would be funded.

Our amateur state champions were crowned last month at Ala Moana Bowls. The full results are not posted but gotta say congratulations to all! Send me some info, press releases and the scoop. And listen for my newest report on ESPN radio, The Ocean Update. Aloha. banzaib@hawaii.rr.com




Video ❁ **Media**
 ❁ **Social Media** ❁
Banzai Productions!
Let us Promote You!
All Video & Media Needs
& Special Kamaina Rates
Web video increases your
impact by 35%! Don't wait
30 Years of Experience
in Marketing
808-781-2535



Sheri Burke de Mendonca Fundraiser

Sheri Burke de Mendonca beautiful Daughter, Mother, Wife, Teacher, Sister and Friend, passed away of a sudden heart attack Sunday, April 19th, 2015 at just 38 years old, leaving an unimaginable void. Sheri was the most amazing mother to her four beautiful girls Kirra 19, Kyla 10, Marina 3 and Mareya, seven months and a loving wife to Buzzy, her husband of 20 years, a North Shore lifeguard. Sheri was a amazing teacher to hundreds of children on the North Shore of Oahu at Sunset Beach Elementary School, where she taught for the past 19 years.

**Please join us
Friday, May 15th, at Waimea Falls Park from
6-10 pm for Entertainment, Food, Silent
Auction and Raffle Prizes. \$75 general
admission and \$125 reserved seating.
Tickets available starting April 30th at
Sunset Beach Elementary School
808-638-8777 ALL profits to benefit Friends
of Sheri Burke de Mendonca Fund.**



Sheri inspired us all with her strength, patience, kind heart, unending enthusiasm and passion to teach and inspire young minds. In the process, she inspired everyone around her. Sheri would write grants so that her students would be able to have iPads and the latest learning tools. She never stopped giving and exploring new avenues to help her students succeed. Our Sunset Elementary family will never be the same without her. The loss of our Sheri, or Mrs. Burke, as the students called her, has affected her family and whole community because she touched the hearts of all that knew her. We were all blessed to have known Sheri. As a community, we would like to help her young family heal by giving them room to breathe free from immediate financial pressures, and continue to provide for them what Sheri was providing them. Especially the home they had worked so hard to own and college for the kids. We can't fill the holes in their hearts, but we can try to help alleviate the financial stress of a newly widowed father and their young family.

**TO HELP - our gofundme site <http://www.gofundme.com/sfn37yc>
Donations can be dropped off at any American Savings bank
payable to: Friends of Sheri Burke de Mendonca Fund and at
Sunset Beach Elementary School Office. For Silent auction dona-
tions, event or Tax Deductible Donation questions please contact
Melissa Ginella 808-375-7844, Judy Deal 808-224-2537 or
George-Anne Webster 808-638-8777**

Mahalo

Kick back into a

NEW or USED CAR...

AUTO RATES

STARTING AT

3.99% APR

Visit us today.



WAIALUA FEDERAL CREDIT UNION

67-292 GOODALE AVE #A2

(808) 637-5980 • WWW.WAIALUAFCU.COM



Living under the microscope

Student Samuel Scott earned a Top 3 spot at the recent 58th Hawaii State Science & Engineering Fair. His third-place finish among the state's whiz kids again confirms that the teen is ever closer to making his mark in the globally competitive field.

Scott, a 15-year-old freshman at Kahuku High and Intermediate, placed first with his project, Bacterial Warfare, at the Windward District Science & Engineering Fair, then third in the statewide competition's Chemistry category.

The district win netted him \$125 cash, qualified him for the Hawaii-wide fair and secured his spot at next week's Intel International Science & Engineering Fair in Pittsburgh.

Intel ISEF is the world's largest international pre-college science competition with top-tier students from some 75 countries vying for \$4 million in prizes, networking and having their projects judged by prominent scientists.

Bacterial Warfare took around nine months of painstaking work to complete. In this project, Scott found the chemicals that bacteria emit and use to kill other bacteria. The process involved identifying



the chemicals, observing signs of bacterial inhibition and measuring the degree of bacterial inhibition.

"This research is important because it is finding chemicals that are specialized to kill some bacteria and not others," Scott said. "This can be extremely significant in the medical field. Besides, what better way to fight bacteria than with chemicals from bacteria?"

"His research project is cutting-edge, laboratory-based and on par with those one would expect to see at the university

doctoral level – with real implications in the medical field," said Brett Kewish, KHIS science teacher and school science fair coordinator. "The best thing about Samuel is that once he's out of the laboratory, he's a humble, well-rounded and well-liked student with great potential."

Kewish has cultivated students' potential during his 18 years of teaching science at Kahuku, which now boasts a total of four students who have qualified for the national competition. Helping them along is the science department at Brigham Young University-Hawaii, where KHIS students receive valuable mentoring.

Hawaiian Mints

*David Orr, Botanical Collections Specialists,
Waimea Valley on Oahu's North Shore*

Plants in the mint family that somehow got to remote Hawai'i eons ago have evolved in strange ways. For one, they dropped their minty smell and flavor. The oils that account for this feature in their continental relatives are expensive (in terms of the energy needed to make these aromatic molecules) to produce, but worth the effort. These oils, great flavorings for us, serve to repel foraging animals in the wild. Pristine, pre-human Hawai'i had no herbivores, so there was no need for this chemical defense. It's the same story for native Hawaiian plants in the nettle family like mamaki or 'olona. Those stinging leaves of their ancestors were useless here, so why keep them?

While most of Hawaii's earliest pioneering plants came from the south or west, new evidence says our mints may have come from the North American continent. One extant, but rare species we used to grow at Waimea is *Lepechinia hastata* which can also be found in Baja, California. A widespread indigenous species (native, but not uniquely Hawaiian), *Plectranthus parviflorus*, a blue-flowered groundcover with dusty mint-like leaves, can still be found naturally in the Valley.

The two species mentioned so far and only two others are the only native mints that aren't endemic. The other 58 species are only found in Hawai'i, meaning this family is 94% endemic. Most Hawaiian species belong to three other mostly high-altitude mint genera. Some species may have ranged down to sea level before man arrived, but their current survivors can only be found in the mountains. One native genus, *Stenogyne*, has species with curved, red, odorless flowers which are bird pollinated, and as native bird numbers decline, they're getting even rarer. The other two, *Haplostachya* and *Phyllostegia* are insect pollinated, and their flowers are white, tubular and fragrant.

Visitors to Waimea can see three native mints in the Hawaiian garden across from the first bridge. Two endangered species of *Phyllostegia* with red labels are near the common *Plectranthus* groundcover.



Aloha Everyone,

Waialua High School Football Team along with Head Coach Lincoln Barit and his coaching staff would like to thank you for your unconditional support and loyalty over the past to present years.

We like to thank everyone who supported and enjoyed themselves at our food truck eperience fundraiser on April 17, where all the food vendors cook up their delicious menu. Special mahalo to Waialua High School Administration, Brown Bottle, Tamura's Wahiawa, Malama Supermarket in Haleiwa, Dupont Pioneer, Players, Coaching Staff, and Parents. Every 3rd Friday of the month we will have our Food Truck Experience Fundraiser at Waialua High School Gym Parking lot, from 4:00 p.m.-8:00 p.m. There you will find the finest food truck vendors. So come and support the Waialua High Football and Avid.

Sincerely, Kuulei Barit (Team Coordinator)



SUMMER ACADEMICS

Grades K-8

- **Math**
- **Reading Comprehension**
- **Writing (Sentences & Paragraphs)**
- **Remedial & Enrichment**

June 15-July 16, 2014 (5 Weeks)
Monday-Thursday @ 2-6 P.M.

Tasty, Nutritious Snacks Included

Located in Kahuku

Free Pickup from Kahuku Summer Fun

Register NOW - Limited Enrollment
469-6463

Waialua General Store

*Across Waialua Post Office
Next to Laundromat*

Onolicious
 Steak Plate Special
 with FREE Soda
 Wednesdays \$7.95

Most Delicious Filipino Food
 on the North Shore
EVERY DAY

Business Hours: 10 a.m. – 7 p.m.
 7 Days a Week

Phone: (808) 637-3131

BULLETIN BOARD

BOW WOW BUNGALOWS

Licensed Boarding Kennel
 North Shore, Oahu
 Reasonable Rates
 Ph. 637-2562
These Dogs Have Fun!



Ernie Doak Plumbing, Inc.

Quality without Compromise

NEW CONSTRUCTION • RENOVATION • SOLAR
Serving Oahu's North Shore for over 20 years

ERNIE DOAK
 Lic. #CT-22113
 Lic. #PJ-10630

cell 295-7943
 office 638-8620
 erniedoakplumbing@yahoo.com

ILAN FREITAS

c 808 372-8848
 a any part of the island
 e greenwaveslandscaping@yahoo.com



yard maintenance
 grass planting
 sprinkler system installation & repair
 landscaping design & renovation
 dirt removal
 commercial & residential
 no jobs are to big or too small



SUNSET AUTO SERVICE, INC.

- Auto air conditioning specialist
 - Auto engine maintenance
 - Safety inspection station
- Walking distance to Wahiawa DMV

Call for appointment
 622-5510

Matt Verdadero
 207 N. Cane St., #1 Wahiawa



"THE BULLETIN BOARD THAT IS IN EVERYONE'S HOME"

BULLETIN BOARD



Featuring the largest selection of certified organic produce on the North Shore. No panic...ours is organic. Open 7 days. Mon.-Sat. 9am-7pm. Sun. 9am-5pm

66-445 Kam. Hwy
Haleiwa, Hawaii 96712
Next to the Post Office
808-637-6729 • 808-637-1922 fax



DR. PORTER TURNBULL
Chiropractic Orthopedist
(808) 638-8740
Appointments available Mon.-Sat. (evenings by appointment)

- Industrial accidents & auto injuries
- Sports injuries • Spinal care
- Safe, Effective, and Gentle

N-C PLUMBING & SUPPLY

Cont. Lic. No. C-8913



- RESIDENTIAL & COMMERCIAL SALES & SERVICE
- CONTRACTING & DESIGN • HOME PLUMBING SERVICE
- PLUMBING FIXTURES, HEATERS • FREE ESTIMATES

Nestor P. Calilao (Owner) Bus: 637-8662
P.O. Box 769 Res: 638-5157
Waialua, HI 96791 Cellular: 372-8718



Matt's Landscaping

Licensed & Insured

Matthew Kekua
Owner

P.O. Box 298
Haleiwa, HI 96712

808-373-0392

elizabethkekua@aol.com

HALEIWA MASSAGE

Shiatsu, Lomilomi, Thai
Hawaiian Body Scrub

551-9604

Haleiwamassage.com



**BRICK
OVEN
PIZZA**

Mobile Service Near Rocky Point
Catering and Local Delivery Available!

Call or Text **808-371-7091**

Munden Design & Build

Lic.#BC19632

Design • Plans • Permits • Construction
Additions & New Residences

808 391-8616

Providing quality work since 1978

LIC. #AC 18275



GENERAL ENGINEERING CONTRACTOR

Full Service Sitework

Contractor

Septic Systems & Tanks

Since 1978

Michael Cowper 638-7200

cowperhawaii.com

New Construction • Drain Cleaning
Residential • Commercial • Remodels
Got Leakz? Call Greekz!
• Line Locating • Copper • Galvanize
372-1820
Greekz Plumbing
#C-32939
Plumbing Service & Repair

Greekz Plumbing

License# C-32939
Phone 372-1820

The Lawn Ranger-

*We put the law back into your lawn,
no yard too hard,
no lawn too far gone...*

**Trees, hedges, hauling,
multi acre properties.**

Fully insured, 25 years experience.

258-6439



North Shore News 2015 Special Editions Publication Date

Call for special rates & to reserve ad space

637-3138

NSHoreNews@aol.com • NSN4Linda@aol.com

Edition Deadline Date

May 27 May 15
Congratulations Graduates

June 10 May 29
Father's Day, Restaurants,
Food Trucks, Farmer's Market

June 24 June 12
Hanapa'a Special Edition

Wonderful News! The North Shore News Goes On-line!

Why wait for the mailman? Get your news fix the modern, easy way. Follow the action on the North Shore from your living room in Haleiwa, in town, or on the mainland.

... On your computer, your tablet, your cell phone

... And in **TECHNICOLOR**

It's easy. Just visit <http://ac003aix.com/artmgr/> for up-to-date happenings on Oahu's legendary North Shore, home of surfing's "Nine-Mile Miracle."

Or, email NSNews@aol.com using your home email address. Write, "Send the North Shore News to me," in the title block. That's it! Each issue will appear in your in-box every two weeks!



To the Editor, "North Shore News"

I don't know whether Antya Miller ("Are we being exposed to toxic ag chemicals?", April 29 issue) came to the North Shore Outdoor Circle meeting on toxic pesticides on April 18th last—if she didn't, she missed some important information. She would have learned, among other things, that nobody is "vilifying" or "attacking" small farmers, many of whom are coming to appreciate the risks pesticides pose. She would have learned that the pesticide buffer-zone bills, debated but not passed by the legislature this year, were originally drafted to exclude small farmers, whose contribution to our economy is highly valued by all, yet still far from sufficient to feed our ever-growing population.

When Ms. Miller says she supports, "diversified farming—that means ALL kind of farming", does she include big out-of-state companies that are gobbling up increasing quantities of Hawaiian land, not to increase our food supply, but merely to test new pesticides and grow seeds with pesticide resistance

that they can then sell on the mainland and around the world? Companies that are simply exploiting Hawaii's benign climate without returning any benefits, so that they can spray and test year round, without telling us what they are spraying or how often, on land already shrinking from urban development that could otherwise be used for food production and provide many more jobs than Big Ag? These were the main targets of the proponents of buffer-zone bills.

If Ms. Miller had attended the NSOC meeting, she would also have learned that the dangers posed by pesticides are much more subtle and far-reaching than the occasional bad smells or vomiting that have caused school closures. Just in the last month, the World Health Organization has stated that the most commonly used herbicide probably causes cancer. The Endocrine Society, an organization with 17,000 members in health and biological sciences, has stated that some of the commonest pesticides are "endocrine disruptors"—chemicals that damage hormones essential to growth and development—and that doses lower than one part per billion can have such effects. This means that present means of testing for pesticide safety are useless and must be replaced. Hopefully, next year the people of Hawaii will be better informed on these issues, and will take appropriate action.

Derek Bickerton, Waialua.



CLASSIFIEDS

The North Shore News is published every other Wednesday and mailed free of charge to all North Shore homes and businesses. Extra copies may be obtained at our office.

PRESS RELEASE POLICY: Submit press releases in person or by fax, mail or email to Editor, North Shore News, 66-437 Kam. Hwy., Suite 210, Haleiwa, HI 96712. Please type your releases and keep them shorter than 200 words unless they are of an unusual news interest. Releases should be viable news stories and are published on a **space available basis only**, with priority given to those received in our office first. You may attach photos. We are not responsible for the return of any photos. All materials are submitted at owner's risk. We reserve the right to edit and/or refuse all submissions including advertising.

EDITORIAL POLICY: We welcome articles and letters from our readers. Letters to the Editor are published on a space available basis only and preference is given to shortness of length, and quality of content. We prefer to run not more than one letter, per person, per 6 month period. Letters subject to edit.

Views expressed by our contributing writers and advertisers do not necessarily reflect the view of the management and staff of the North Shore News. All rights reserved. Reproduction in whole or part without permission is prohibited. © 2014.

Editor & Classifieds

Linda Seyler

Typography

Downtown General Store

Contributing Writers

Tom Jacobs
Betty Depolito
Naty Hopewell
Choon James

City Councilman Ernie Martin
State Representative Lauren Matsumoto
State Representative Feki Pouha
Senator Gil Riviere

Photography

Banzai Productions



Please recycle this newspaper.

SERVICES

SHORE ELECTRICAL SERVICE
New Const-Remodels
638-0049 / Lic#C20777

PARADISE PLUMBING INC.
New Const • Repairs • Remodels
808-368-1473 / Lic. 29856

Lawn Care For You
Mowing, Trimming, Light Hedging
Call Thomas 637-5839

Computer Problems?
I can fix any MAC or PC.
Chris 371-3089

Construction Services
Single wall, windows
New & remodels
Free Estimates
260-7386

Carpentry & Painting Services
Repairs/Remodeling, Termite Rot
Doors, Cabinets, Countertops, etc.
Reasonable Rates 271-6584

Dog/Cat Nail Trimming
at your home only \$15.00
Call 637-5395

Hank's Welding
Certified, mobile, fabrication &
Installation services. Specializing
in stainless steel welding.
690-0392

Andres Plumbing
All your plumbing needs
808-256-7337 Lic#C24500

Scot's Painting Service
Latex, Oil, Stains, Power
Washing, former union
Painter. 30 yr. Resident.
489-6317

Uncle Donald Has A Boom Truck
63 Feet Reach-Best Rates
Sailboat Masts, House Beams,
AC Units, Light Poles, Any Kine
Lifting (808) 489-7772

DILLION SIGNS
& Residential Painting
Haleiwa-20 yrs exp.
499-9582

Hauula Home Care Services
Private Residential 24 hour
Elderly Home Care located in
Hauula. Secluded mountainside
estate w/ full care staff.
808-852-1134
kawelabaystand7@hotmail.com

Vanessa Li Style
at Salon La Sirena
Vanessalistyle.com (808) 953-8221
Cut & Color special \$100
Lash extension and brows \$90

North Shore Pumping
Septic and Cesspool Services
Clifford 638-0900 • 291-5099

Paumalu Electric Inc.
C 18074

Residential & Commercial
New Installation & Repairs
Rennovations. Remodels
Electric Meter Replacements
Complete Install for Solar PV
Dave Hancock 638-9054

**N.S. Tropical Plants
Nursery**

Large variety of ornamental
Plants and palms
638-0376

N.S. Property Maintenance
Power wash, painting int/ext,
deck repairs, extensions,
fences, gates,
carpentry & remodels.
Maintenance, lawn & yard.
Chris 381-5213/638-0659

**North Shore
Auto Detailing**

Mobile Service-We Come to You
Billy Ching
808-371-0854

**Next Issue - May 27, 2015
Deadline Date - May 15, 2015**

BIKRAM YOGA
NEW VINYL FLOORING!

Change your Body,
Change your Life!
Please call for class schedule
637-5700

**Your Clean Home
Vacation/Residential
Home Cleaning**
Affordable • Reliable
• Green Cleaning
**For Free Estimate
Call 782-9941**

BOBBY'S BODIES

Tuesday evenings at 5:00 p.m.
• Body Toning
• Cardio Pump/Fat Burner
For more info: call Bobby, owner of
BOBBY'S BODIES at 637-4150

LC Development
**New homes, remodels,
kitchens, baths, decks,
custom metal fab.**
BC 15645
342-8350 • 227-2323

PIANO LESSONS

**Guitar, Ukulele, Bass,
Singing, Songwriting**
637-4635

North Shore Car Rentals

Low cost rental cars.
Rates are low by providing
slightly older cars with a
"local" vibe to them, don't
be fooled. All vehicles are
well maintained and safety
inspected. please visit
northshorecarrentals.com or
call (808) 237-4504.



Like us on Facebook:
[Facebook.com/
NSNewsHaleiwa](https://www.facebook.com/NSNewsHaleiwa)

HOW TO CONTACT THE NORTH SHORE NEWS

Letters to the Editor, and other items submitted for publication consideration may be sent to us via:

MAIL: 66-437 Kamehameha Hwy., Suite 210, Hale'iwa, HI 96712

E-MAIL: NShoreNews@aol.com

PHONE: (808) 637-3138

Office Hours: Monday - Thursday 12 noon-3:30 p.m., Friday 10 a.m.-5:00 p.m.

www.northshorenews.com

CLASSIFIED ADS

LEARN TO SWIM
AT THE
HAWAII SWIM SCHOOL
ON THE NORTH SHORE
Developing swimmers since 1982
Haleiwa Rd. at Smiley Place
637-4863

ANGELS PLUMBING
Repairs
Remodeling
Renovation
638-7878
Lic. #C12004




Business Services Center
Fast & convenient fax, copy, scan, computer/internet, laminate, etc.
Across from Haleiwa post office.
637-4558 or GoNorthShore.org

Classified Ad Rates
3 lines (min.) \$18.89
4 lines \$25.13
5 lines \$32.45
1" Box Ad \$41.88
(27 characters in each line)
Include your contact information.
**Ads can be dropped off in mail slot, mailed, or emailed. Pay by check payable to: North Shore News or credit card by phone order.*
We reserve the right to refuse any advertisement with a full refund.
North Shore News • 66-437 Kam. Hwy., Suite 210, Haleiwa, HI 96712
• (808) 637-3138 • NShoreNews@aol.com



Marianne Abrigo, Properties
Specializing in -
North Shore
Real Estate
Ask for our list of available properties and/or a free market analysis.
Marianne M. Abrigo
"Realtor since 1974"
Office **637-3511**
Fax **637-0777**
Email **mabrigo222@aol.com**

HELP WANTED
BUSSERS/SERVERS
Pizza Bob's in Haleiwa is looking for BUSSERS/SERVERS. Experience preferred. Apply in person at 66-145 Kam. Hwy.

COOKS/KITCHEN HELP
Pizza Bob's in Haleiwa is looking for kitchen personnel. Experience preferred, but will consider training the right people. Apply in person at 66-145 Kam. Hwy.

Gardener, 8 hrs per week for Haleiwa beachfront home.
637-0808

Immediate opening for P/T salesclerk for women's clothing store in Haleiwa. Apply at Dawn's Treasures 66-226 Kam Hwy, 10am-5:30pm
636-2424

Retail Sales Surf & Sea
Hawaii's Ocean Sports Headquarters is always looking for hard working, energetic people to become a part of our sales team. Good pay, bonus, benefits. Ocean sports experience and/or bilingual a plus. Apply in person daily 9am-7pm
62-595 Kam. Hwy., Haleiwa

FLOWERS
Plumeria Flowers
Are Blooming
U-Pick
232-9044

FOR RENT
Haleiwa Town Center
Space for Lease
636-2222

OFFICE SPACE
D'Ascoli Bldg (Xcel Bldg)
2nd Fl 484sqft 586sqft \$2.45/sqft
Retail 466 sqft, \$3.44/sqft
Call: 799-9135

TABLES & CHAIRS
780-8037

Pothole Hotline
768-7777

MISCELLANEOUS
If you do not want to receive the North Shore News in your mail box please email: NShoreNews@aol.com
RE: "Discontinue NSN" with your mailing address information.

Voice of God Ministries
Jesus Loves You
For Prayer
Call 808-373-0294

North Shore Food Bank
Food bag distribution
Wednesdays at Haleiwa
Gym across from
Post Office
9am-12pm

New Businesses
Take Advantage of North Shore News Special Rates
Call 637-3138 and mention you are a "new business"

Food Truck Experience
Waialua High School
Gym Parking Lot
3rd Friday of each month
4:00 pm - 8:00 pm

OFF da ISLAND
Are you leaving Oahu on vacation or business? Do you live on a neighbor island, the mainland or foreign country and subscribe to the North Shore News? Try send us a photo of someone in front of a sign or landmark holding a copy of the NSN. Email your photo along with the person or persons' name, community of residence, telephone number and photo location to: NShoreNews@aol.com.

Queen's Open Market
Sundays 1:00 to 5:00 pm
Liliuokalani Church

New Hope Haleiwa
"Anchored to God's word, led by his spirit" @Haleiwa Elementary School
9:00am Service
621-9363

Ron Artis Family LLC
Arts & Agricultural Center
Call today for music lessons for adults and children.
808-222-7589

For Advertising Rates
Call 637-3138
or go to
www.northshorenews.com

Kahuku Library
"What is Legal Aid and what can it do for you?"
Tuesday, May 19
6:00pm

Kahuku Library
LEGO Club
Every Wednesday
2:00 - 4:00pm

Waialua Library
Used Book Sale
Saturday, May 16
9am - 2pm

Waialua Library
Offers free computer instruction. Every Friday, 9am

We would like to notify the entire North Shore community that there has been a flux of bike thefts all along Ke Nui Rd, as well as various other items like lawn mowers and a surfboard. Please let us know how we can proceed with a notice, we feel it could be a helpful reminder for people to remember to lock up your bikes
thanks
Bill Ballard



Malama Market Haleiwa:
Open Daily 7 a.m.–9 p.m.
(808) 637-4520

Malama Market Makakilo:
Open Daily 6 a.m.–10 p.m.
(808) 672-9955

Valid Dates:
5/13/15–5/19/15

Deals of the Week!

Braeburn Apples

99¢ LB.

Fresh Ground Beef
80% Lean, Jumbo Pack,
5 lbs. or More

\$4.29 LB.

Cook thoroughly to 160°F **LARGE SIZE**

or Fresh Ground Pork
Value Pack,
3 lbs. or More

Hormel Always Tender[®] Pork

Aquafina Water
24/500 ml.

\$4.99

AQUAFINA

pure water, perfect taste
PURIFIED DRINKING WATER

ECO-FINA SCOTTLE™
50% LESS PLASTIC

Ben & Jerry's Ice Cream
Selected Varieties,
16 oz.

\$3.79

Cherry Garcia
Chocolate Fudge Brownie

Lay's Brand Potato Chips
Selected Varieties,
7.75–8 oz.

2/\$7

wavy ORIGINAL
Classic

Meadow Gold Drinks or Swiss Teas
Selected Varieties,
1/2 Gal.

4/\$5

Swiss Premium Natural Tea Cooler
Meadow Gold GRAPE FLAVORED DRINK

Yoplait Yogurt
Selected Varieties,
4–6 oz.

5/\$3

Yoplait original

Birds Eye Steamfresh Vegetables
Selected Varieties,
12 oz.

\$2.19

amfres Steamfresh Fresh Frozen Vegetables

Loaf Cake
Assorted Varieties,
16 oz.

\$4.99 EA.

15 Piece Fried Chicken Thighs
Original, Korean,
or Furikake

\$16.49 EA.

MIX & MATCH
15 PCS

Stella Artois, Widmer Brothers or Redhook
12 Pk. Bottles

\$14.99

WIDMER BROTHERS BEER
STELLA ARTOIS BELGIUM

Thursday

Grilled Steak Lunch **\$8.99**

7–8 oz. Steak, Rice, Tossed Salad, Drink

Hawaii Beverage Fee Hawaii Beverage Fee of 1.5¢ per can or bottle will be added to purchase price at checkout. An additional Hawaii Deposit Fee of 5¢ will be charged for all specially marked beverage containers. Limit five units (mix/match) per purchase, unless otherwise specified. We reserve the right to limit quantities. No sales to dealers. Prices plus applicable state tax. Hawaii EBT cards welcomed.