



"E Ala Na Moku Kai Liloloa"



Miss North Shore
Keala Patterson
See Page 15



NORTH SHORE NEWS April 15, 2015 VOLUME 32, NUMBER 8



Celestial Natural Foods 66-443 Kam Hwy, Haleiwa.

Celestial Natural Foods Celebrates Earth Day, April 18 & April 19 2015

Celestial Natural Foods honors Earth Day 2015 this year by having a giant two day sale here in Hale'iwa. Saturday and Sunday we will be featuring environmentally safe household products, recycled

paper products and organically grown foods. Our emphasis is contributing to a healthier planet. We will displaying guides to toxic free homes and healthier recipes with organic food. This year we will

be extending the sale to two days so more customers can make it in. Open Saturday 9a.m. - 7p.m. and Sunday 9a.m. - 5p.m. Free samples, giant sale all day long, 20% off all purchases. Mahalo & Aloha.

66-437 Kamehameha Hwy., Suite 210
Hale'iwa, HI 96712

PRE-SORTED
STANDARD
U.S. POSTAGE PAID
Honolulu, Hawaii
Permit No. 1479

PROUDLY PUBLISHED IN
Hale'iwa, Hawai'i
Home of the
Friends of Ali'i Beach

OFF da Island in Appi, Japan

North Shore residents Minako Rich and her husband Shame needed a change in climate so they headed to snowy Japan. Instead of fighting over who was going to hold the NSN in the picture, they decided to take separate pictures with each of them holding the NSN. Minako and Shame are pictured in Appi, Japan in the Iwate Prefecture. They say "Be Happy in Appi" which they are. To learn more about our North Shore News Off da Island campaign turn to page 23.



Send us your "Letter to the Editor" on any topic in the NSN publication, or any community concern. Letters 200 words or less preferred. Include first and last name and contact phone number. NShoreNews@aol.com

The Halé'iwa Family Dental Center, Ltd.



presents

"Customized Dental Care" featuring

- Prevention
- Dentures
- Cosmetics
- Emergencies
- Gum Therapy
- Implants
- Children
- Restoration Dentistry (Fillings, Crowns)
- New Patients Welcome!

Produced by Todd R. Okazaki, D.D.S. and Staff

"DON'T WAIT UNTIL IT HURTS"

Conveniently located behind First Hawaiian Bank in
Historic Halé'iwa Town
Call 637-9652 for your reservation

66-037 Kam. Hwy., Ste. 3
Haleiwa, next to Growing Keiki

Saccoccio & Lopez

ATTORNEYS AT LAW
Serving Haleiwa since 1984

Bankruptcy
Personal Injury • Criminal Law
Landlord/Tenant
Traffic Offenses • DUI

Family Law

Adoption • Custody • Divorce
Paternity • Guardianship
Deeds, and Wills

Notary Public

637-7611

VISA/MC Accepted



Paul & Nita

Friends of Ali'i Beach beach clean up & family ocean recreation day!



Please join us for a day of fun, family, and ocean awareness in support of the Haleiwa Ali'i Beach Park, The John Kalili Surf Center and the ocean recreation programs that were once available to the community.

SATURDAY, APRIL 25, 2015

9:30am-6:00pm

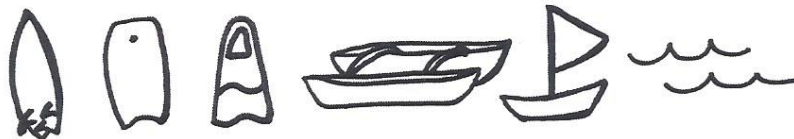
10am-11:30am BEACH CLEAN-UP

From Kaiaka Beach Park to Haleiwa Harbor

11:30am-6pm HALEIWA SURF CENTER

11:30 Gather at the Haleiwa Surf Center

12-2 PM: Ocean Fun Activities, Food



(Keiki will enjoy Surfing, Boogie Boarding, Diving, Canoeing, Sailing & Swimming)

2-6PM: Live Entertainment, Speakers, Outreach

Become a member of The Friends of Ali'i Beach!

For questions or to get involved, contact Kanani Oury, 808-388-0389

SUPPORTED BY FRIENDS OF ALI'I BEACH, THE CITY & COUNTY ADOPT-A-PARK PROGRAM & THE NORTH SHORE NEIGHBORHOOD BOARD PARKS COMMITTEE



Talking Story

with

Tom Jacobs

Malama Ali'i

*A Celebration in Support of Ali'i Beach Park
and John Kalili Surf Center*

What are you doing on Saturday, April 25th? Want to chow-down on an ono lunch with your North Shore neighbors and listen to great local music, while the keiki enjoy fun games and beach activities? Want to pitch in to clean up our lovely beaches from Kaiaka Park to the harbor?

Well, the Friends of Ali'i Beach invite you to join them for a day filled with good fellowship in support of Ali'i Beach and John Kalili Surf Center. The celebration is also supported by City and County Adopt-a-Beach Program, and the North Shore Lifeguards.

The North Shore News interviewed event's sponsor, Kanani Oury. "We wanted to call attention to our lovely beach park and to enjoy the day with neighbors," Kanani said. "But we especially want to support the Surf Center." This iconic building in the center of the park has turned generations of North Shore keiki into surfers and swimmers. The dramatic surf-break makai of the Center is the site of the first leg of Van's Triple Crown of Surfing each fall. The Center's second story was added a few years ago as a prop for the TV series BayWatch Hawaii, filmed on-site. "There are rumors that the City Council is allocating funds to tear the Center down," Kanani said. "That would be tragic. Money would be much better used to refurbish the center and bring the second story up to building specs so that the whole building could become the surfing and water sports center it once was."

Who was John Kalili, the Center's namesake? To find out we phoned Ken Asano, whose wife, Amy, is the youngest of John Kalili's eight children. "My father-in-law was very community-minded," Asano said. "He helped everyone out. Someone needed a load of dirt or a battery-jump to start a car, they would call John." He served for years as fire captain at the Haleiwa fire station on Haleiwa Road. When he died in 1976 at the age of 80, the Surf Center was named for him in memory of his years of service to the community. Ken and Amy Asano still live in the large, beautiful Kalili family home on Haleiwa Road,

An announcement of the celebration's schedule of activities and a schedule of events is in this edition, on page 3. Phone Kanani Oury at 808-388-0389 for more info or to volunteer to help.

Try come. Try enjoy.



Ka'a'awa
ELEMENTARY SCHOOL

6th Annual
5K FAMILY
FUN-RUN-WALK

Saturday, April 25, 2015

8:00am - 10:00am • 7:00am Check-in
KUALOA RANCH, Ka'a'awa Valley Road (surf spot entrance)

All applications received in the office by **Friday, March 20, 2015**
will receive a **FREE Ka'a'awa 5K Fun Run T-Shirt.**

- ALL Children **MUST** be accompanied by an adult.
- Pet Friendly event.
(leash and clean up required)
- Stroller friendly trail.
(off road strollers best)
- Refreshments and Snacks for sale.

Register Online at: active.com

before March 20th	after March 20th
Adults \$20	Adults \$25
Students \$10	Students \$15

For additional information please call 237-7757

Additional forms are available at Ka'a'awa Elementary School
or our website at kaaawa.k12.hi.us or email kaaawapchc@gmail.com

ATTENTION!
Please attend our informational
briefing on the Rail Project
on April 21, 2015
at Waialua Elementary
School Cafeteria
Please send your thoughts to:
reppouha@capitol.hawaii.gov
or call
808-586-6380

Vanessa Li Style

now at

Salon La Sirena

Cut, color, style, make-up, lashes,
wedding, fashion. Using top quality
ammonia free products for the healthiest,
shiniest, most beautiful hair that money
can buy. Specials: cut-color \$100,
lash extensions \$80

953-8221

vanessalistyle.com



Council Chair
Ernie Martin
Serving You in District 2

**Capital Improvement Projects
in the District for 2016**

During this current phase of the City's budget deliberations, Councilmembers often propose amendments to the Mayor's budget to include specific district projects, commonly called CIP projects. Some of the noteworthy additions I have made to the Capital Improvement budget may fund a number of projects supported by the communities for the improvement of existing city facilities in District 2.

Such is the case with the \$500,000 I am requesting for the Ahilama Bridge Replacement. The money would be used to design and construct a replacement bridge at the intersection of Ahilama Bridge and Mapele Road, an important improvement for the residents of Kahalu'u. I have also added \$100,000 for improvements to the Punalu'u Beach Park, including beautification of the exterior separation from the roadway.

For the residents of Kahuku, I am advocating improvements to the Kahuku District Park for adequate lighting of this important community resource. In the proposed CIP budget is \$3,200,000 to plan, design, construct, and provide equipment for field lights, light poles and a new recreational facility.

In Hale'iwa, the Hale'iwa Beach Park continues to suffer from a lack of upkeep and much needed refurbishment. I have once again included \$250,000 to update the Hale'iwa Park Master Plan and conduct a feasibility study to determine the cost and scope of work to completely refurbish the park. I have also included \$450,000 in matching grant money for the refurbishment and remodeling of the John K. Kalili Surf Center at Hale'iwa Ali'i Beach Park. This project has the potential to be a prime example of a successful private-public partnership with the community. The Friends of Ali'i Beach Park have been working diligently with the City's Adopt-A-Park Program in support of the Surf Center and community activities.

In Waialua, the Band Stand is in need of attention, including an irrigation system to keep the grass green and growing. There is now \$450,000 in the proposed CIP budget for this system and other improvements to the Band Stand. There is also \$150,000 in the budget for improvements to Waialua Beach Road, completing a segment of sidewalk to connect the bus stop to Kahaone Street.

I have also included money in the CIP budget for improvements to the Central Oahu Regional Park and the Waipio Soccer Park as a great number of children and young adults in our district utilize these facilities on a regular basis. Improvements to these recreational facilities, as well as infrastructure upgrades to existing facilities in our district, are now a part of the City Council's proposed CIP budget for 2016.

Food Truck Experience
Waialua High School Parking Lot
3rd Friday of the each month
4:00 p.m. - 8:00 p.m.

North Shore Food Bank

Please show kokua by replenishing our Food Bank.

Drop off canned goods at the North Shore News office.
Checks can be sent to:
OAMC (Once A Month Church)
P.O. Box 117, Haleiwa, HI 96712
MAHALO



WAIALUA FRESH
Since 1970



"Da Best"

LOCAL

tasty original

Sada's Snow Puffy Malassada

Visit us @ www.pkbsweets.com

OHANA SWEET



RUMMAGE SALE



SATURDAY APRIL 25, 2015 8:00AM - 2:00PM

BAKE SALE...ENTERTAINMENT...CLOTHES...BOOKS...BABY ITEMS...& MUCH MORE

WAIALUA UNITED CHURCH OF CHRIST
67-174 FARRINGTON HWY
(ONE BLOCK FROM WAIALUA HIGH SCHOOL)
CALL 808.637.6688 FOR MORE INFORMATION



Earth Day

April 18, 9am - 3pm

Help keep Waimea Valley clean and green! Call to learn more about planting, cleaning, and more volunteer opportunities



LĀ 'OHANA Family Day

3RD Sunday Every Month

50% Off General Admission for our Kama'aina & Military!



Come Try Our Updated Menu!

The Proud Peacock RESTAURANT

Thursdays - Saturdays

Happy Hour: 4 - 6pm
Dinner: 4 - 9pm



WAIMEA VALLEY
HI'IPAKA LLC

On the North Shore across from Waimea Bay

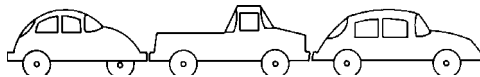
Open 9am - 5pm Daily

Call: (808) 638-7766

WAIMEAVALLEY.NET

WHERE HAWAII COMES ALIVE

CAR WASH !



Starting at \$5

Saturday, May 9, 2015

8am to 2pm

Waialua Community Assoc. in Hale'iwa

Proceeds to benefit the North Shore Food Bank

Sponsored by the Once A Month Church
(to volunteer or donate call 637-3138)

BREAKFAST

7 AM to 10:45 AM DAILY



Haleiwa Town Center - 637-5095

\$2.00 Off with this Coupon

Some Restrictions Apply. See Restaurant for Details.
When Ordering Regular Priced Items. Good Anytime. One Coupon Per Person.
Can Not Be Combined with Other Discounts. Expires 06/30/2015.



Team LeiLei's would like to 'Thank You' for your Support & Loyalty over the past 12+ years. For three days in April (27th-28th-29th)(Mon-Tue-Wed) LeiLei's will not be open for business.

We will be taking a short break to work on our Facility, spend quality time with our Team, and have our Employee Party. We apologize for the inconvenience & 'Thank You' again for your continued support.

Mahalo,
Team LeiLei's

INTERNATIONAL KARATE FEDERATION
(TRADITIONAL JAPANESE KARATE)



GRAND OPENING SPECIAL
WAIALUA DOJO
(STARTING APRIL 6, 2015)



WAIALUA ELEMENTARY SCHOOL
(67-020 Waialua Beach Road)

MONDAYS AND WEDNESDAYS : 6:00 PM TO 7:30 PM
OPEN TO CHILDREN 5 YEARS AND ADULTS AND SENIORS

SPECIAL : \$40.00 with FREE Uniform
(one month training ONLY)

REGULAR MONTHLY FEES \$60.00
PLUS YEARLY REGISTRATION OF \$25.00
(FAMILY RATES AVAILABLE)

IKF PHILOSOPHY

The International Karate Federation believes and teaches a core of traditional values. The values of Respect, Self-Discipline, Dedication, and Humility are the basis of our karate teachings. IKF is well known for its high-level instruction and world-class athletes, but most notably, for its disciplined students. We first emphasize on learning the fundamentals and basic techniques of karate and then building our way up from there.

For more information contact Sensei Billy Binz:
cell :780-5457 email : wvbinz.bb@gmail.com

SUPER SAVER SPECIAL



Only at Paalaa Kai Bakery



MIX & MATCH
a dozen of any below and
EARN 15%

- Brownie**
- Ensamada**
- Cinnamon Roll**
- Long John Turnover**
- Twist Doughnut**

Save time and call in your order by phone!
(808) 637-9795

15% savings only applies to items listed above. Cannot be combined with PKB daBest VIP card, other promotions, or discounts. Valid from April 15 - 28, 2015. Mahalo and hope to see you at PKB again soon!



**Representative
Lauren
Matsumoto**
Serving You in District 45

HIKING SAFETY

Aloha!

Our breathtaking mountains can be tempting to an adventurous spirit. Hiking is good for the body, mind, and soul. However, the beautiful peaks can be every bit as treacherous as they are lovely.

Here are a few hiking tips to keep you safe:

1. Tell someone where you're going. It may seem over-cautious, but if an emergency should occur, someone else needs to know when you plan to be back so they know to look for you.
2. Don't risk your life for a picture. A staggering percentage of the fatalities and injuries that have occurred lately are due to mishaps on behalf of finding that perfect angle for a Facebook or Instagram picture. The absolute unnecessary nature of this makes it all the more regrettable. Please do not risk your life for a good picture. Your family would rather see you in person.
3. Be prepared for all weather. Even if you intend to be back by a certain time, if an unforeseen event leaves you stuck what feels tropical and warm during the day can easily become cold, windy, and wet in the night. And our many microclimates that make our islands unique can change dramatically in minutes.
4. Water. Should an accident occur, water is the foremost necessity for your body to heal. Always bring more water than you anticipate needing to drink. If it's too heavy, do an easier hike until you are able to handle the weight. And remember to never drink from a stream or lake. Even if it looks clean, bacteria, including leptospirosis, are common in our fresh waters.
5. Buddy system. If you've never done the hike before, find someone who has. The Aloha spirit extends to the hiking community and there's always someone who will be willing to guide you through safely. Try social media to find hikers in your area.

Ultimately, you are responsible for minding your own capabilities. Should a circumstance occur that requires aid, stay calm, stay warm, attract attention, be visible, and if you are lost stay where you are so you don't wander farther from help.

If you plan accordingly and pack smart, you can give yourself a better chance of having a safe, satisfying hike.

I hope you find this information useful! I'm always eager to hear from you so if you have any questions, concerns, or ideas, please feel free to contact me at (808) 586-9490 or at RepMatsumoto@Capitol.Hawaii.gov or visit RepMatsumoto.com.

The North Shore Chamber of Commerce (NSCOC) is commencing a search for a new Executive Director

Our current ED will be stepping down toward the end of 2015 and we are looking for an individual, passionate about the North Shore, to step into the position. Please submit your resume along with 3 references and a cover letter via email to Kathleen Pahinui at pahinui001@hawaii.rr.com.

JOB SUMMARY

The Executive Director serves as the chief executive and administrative officer of the NSCOC and is responsible for the overall operation of the organization consistent with the policies of its Board of Directors; reports to the Board of Directors.

DUTIES AND RESPONSIBILITIES

- Plans, develops, coordinates and manages programs and projects which fulfill the mission and objectives of the NSCOC.
- Prepares and submits applications to private and public funding sources for the acquisition of funds necessary to further the objectives, plans and initiatives of the NSCOC; with Board of Directors, develops membership base of the NSCOC.
- Develops the annual budget for Board approval and manages the NSCOC's finances. Prepares and reviews with Treasurer, obtaining Treasurer's approval for reports, including credit card statement.
- Works with Board to develop and promote working partnerships and alliances with the public, private and community sectors which will further the goals of the NSCOC.
- Represents the NSCOC at meetings with businesses, community, public and private agencies and public officials
- Responsible for day-to-day office operations, including but not limited to, the recruitment, hiring and supervision of staff and volunteers.
- Responsible for the planning, coordination and publicity of meetings and events sponsored or co-sponsored by the NSCOC such as membership meetings, committee meetings, Business After Hours, events, Business Expo, etc.
- Serves as an advisor to the Board and ex-officio on all committees; recommends appropriate policies for Board consideration.
- Keeps Board fully and accurately informed regarding finances, operations and programs.
- Performs other duties as directed by the Board of Directors.

QUALIFICATIONS

- A minimum of bachelor's degree in public or nonprofit administration or equivalent experience.
- Experience in the management and administration of nonprofit organizations, including successful experience in the writing and securing of grants.
- Experience in developing and maintaining effective communication and working relationships with the business community, public and private sector funders, and the community at large.
- Experience with governmental, legislative, planning and permitting processes helpful.
- Excellent leadership and communication skills (written and oral). Must be competent in public speaking.
- Knowledge of the North Shore community and also some or all of the following areas very helpful: small business administration, historic preservation, economic development, and agriculture.



KATHI LEE ALBIAR

Realtor/Principal Broker/Owner
RB-17327

808.358.4139



State Representative
Feki Pouha
Serving You in District 47

AT THE CAPITOL

Aloha Kakou, I hope everyone had an enjoyable Easter Holiday.

For the past 16 years, the Hawaii Women’s Legislative Caucus has spearheaded the donation of Easter baskets to the Institute for Human Services.

During this donation drive, hygiene products, school supplies, food items, first aid supplies and other essential items were donated.

For this year’s event, I had the honor of dressing up as the Easter Bunny. In addition to spreading Easter joy throughout the Capitol, I was able to help collect over 140 donated baskets. Mahalo to the Women’s Legislative Caucus, the Institute for Human Services, and all those who donated Easter baskets.



LEGISLATIVE UPDATE

Turtle Bay Easement

Senate Bill 284 (SB284), which would extend the deadline and allow for completion of the Turtle Bay easement deal, was heard in the House Water and Land Committee on March 25th.

As a member of the Water and Land Committee, I conveyed to my fellow committee members the significance of this easement deal to North Shore residents, and encouraged them to vote to pass the bill out of committee.

Fortunately, it was a unanimous vote in favor. SB284 then passed a second reading on the House Floor and is now scheduled to be heard in the House Finance Committee. As a member of the Finance Committee, I will continue to promote the necessity of the Turtle Bay easement deal in a responsible manner.

I want to express my thanks publicly to all of you who sent in testimony and also emailed me and my fellow legislators. I love the civic engagement of our community!

Vacation Rentals

Senate Bill 519 (SB519) seeks to regulate transient accommodations by doing the following: (1) Extending Act 326, SLH 2012, for one year, requiring registration numbers on all internet advertisements for transient vacation rentals; (2) Requiring the Department of Taxation to submit an annual report to the Legislature on the implementation of Act 326; and (3) Authorizing the Department of Taxation to enforce civil penalties for operators and plan managers who fail to display the certificate of registration for transient accommodations.

SB519 has passed out of three House Committees thus far, and has passed a second reading on the House Floor as well. This measure is now being considered by the House Finance Committee.

To follow the status of SB284 or SB519, and any other measures you may be interested in, please visit the legislature website at www.capitol.hawaii.gov and type in the measure number into the search box at the top-left side of the page. Feel free to also contact our office at reppouha@capitol.hawaii.gov or 586-6380.

COMMUNITY MEETING

Please join us for an informational briefing and community input meeting on the Honolulu Rail Project.

This community meeting will be held on Tuesday, April 21 at 7:00 p.m. in the Waiialua Elementary School Cafeteria. Representatives from The Honolulu Authority for Rapid Transit (HART) will be present, as well as other area legislators. I look forward to seeing you there.

N.S. Tropical Plants Nursery
 Large variety of ornamental plants and palms
 638-0376



HAWAIIAN ELECTRIC PRESENTS

THE 8TH ANNUAL

GROW HAWAIIAN FESTIVAL

CELEBRATE HAWAII'S CULTURE • NATIVE PLANTS • SUSTAINABLE LIFESTYLES

Saturday, April 25, 2015 • 9 a.m. to 3 p.m.

Bishop Museum • 1525 Bernice Street, Honolulu

Free admission for kama'āina and military with valid ID

Keynote Presentation by Polynesian Voyaging Society

Bishop Museum J. Watumull Planetarium Exhibit

Wayfinders: Waves, Winds, and Stars

On the Great Lawn

Lei making – woodworking – kapa printing – weaving

Native plant sale – farmers' market – local products

Learn about clean energy – conservation – electrical safety

Enjoy games – keiki activities – 'ono food

Hula by hālau Nā Pualei O Likolehua and Ke Kai O Kahiki

Music by Kūpaoa and Natalie Ai Kamauu

For event details: 543-7511 or www.hawaiianelectric.com/growhawaiian



Hawaiian
Electric



BISHOP MUSEUM

Olakino Maika'i

(Good Health)

by Naty Camit Hopewell

Atrial Fibrillation: Part I

Atrial fibrillation is a condition where the chambers of the heart are not beating in rhythm causing an irregular, rapid heartbeat. What's causing the irregular rhythm? Your heart has four chambers. The two upper chambers are your atria and the two lower are the ventricles. The upper right chamber has the heart's natural pacemaker, which produces the electrical signal that starts each heartbeat. At the signal, they contract and pump blood through the ventricles. As the signal passes through the ventricles, the ventricles contract and pump blood into your body. In atrial fibrillation, the atria experience chaotic electrical signals causing the atria to quiver resulting in a bombardment of impulses going through the ventricles. This results in the ventricles beating anywhere from 100-175 beats per minute; the average pulse is about 72.

What are the possible causes of atrial fibrillation? They include high blood pressure, heart attack, coronary heart disease, abnormal heart valves, congenital heart defects, overactive

thyroid, stimulants (caffeine, tobacco, alcohol, drugs), lung disease, previous heart surgery, viral infections, stress due to pneumonia, surgery and sleep apnea. The older the patient, the higher risk for atrial fibrillation. Sometimes, the cause is unclear.

Some people with atrial fibrillation are symptom free and are discovered in a physical exam. Symptoms can include palpitations (sensation of heart racing, irregular heartbeat and heart flip-flopping), weakness, decreased ability to exercise, lightheadedness, dizziness, shortness of breath and chest pain.

Atrial fibrillation by itself is not life threatening. However, it can lead to complications such as stroke. In atrial fibrillation, the irregular rhythm can cause blood to pool in the atria and form clots. This blood clot could loosen and travel to the brain where it can block blood flow causing stroke. Atrial fibrillation, if uncontrolled, can also weaken the heart and eventually lead to heart failure.

Part II: Treatment

Monsanto Employees Promote Bike Safety at Waialua Elementary School

Students at Waialua Elementary School were treated to new helmets, reflective arm bands and safety pamphlets sponsored by Monsanto as part of the school's Bike Safety and Awareness Event. "Waialua Elementary School is very pleased and proud to have Monsanto as one of our school partners," said Twila Richvalsky, Waialua Elementary School's parent community network coordinator. "We enjoy working with the Monsanto employees and hope the relationship continues for many years."

Employee volunteers from Monsanto spent time teaching students about bike maintenance, how to properly wear safety gear and about bike safety rules. They also painted yellow safety stripes around the schools to increase awareness about taking proper precautions when riding a bike or crossing the street. Monsanto's Hawaii's Hale'iwa site supervisor, Caleb Dohrman, spearheaded the effort to get employees involved in this event since he feels bike safety is an important issue. "I grew up in a small community in Indiana where kids often had to ride bikes to go to town or see friends, and they would also receive bike safety guidance in school, similar to the program at Waialua," said Dohrman. "In the Waialua and Haleiwa



area, the streets are often very crowded with cars and tour buses, as well as people wanting to go to the beaches. I wanted to bring my experience and share bike safety knowledge with local youth."

Fourth grade students also participated in the school's Bike Safety Awareness Poster Contest. Three winners were selected and received new bicycles and pressure gauges donated by Monsanto. The contest focused on safety themes which included "always wear a helmet," "bicycle safety rules" and "my bicycle and I – reflective and ready."

Monsanto Adopts a Portion of Kamehameha Highway

As part of the popular Adopt-a-Highway initiative, Monsanto adopted a stretch of Kamehameha Highway leading into Hale'iwa town. It is the company's fourth year participating in the nationwide effort, and to date the company has put in more than 350 hours to clean up and beautify this area. An average of 30 employees and their family members have helped during each clean-up session.

As one of the company's core values, Monsanto encourages its employees to volunteer and donates to numerous organizations and community events. The company offers to match employee donations whether it's monetary or hours worked. From this year, funds raised through the Adopt-a-Highway effort will go to Waialua Elementary School. "Our team really enjoyed working together to clean up this portion of the North Shore," said Caleb Dohrman, Monsanto Hale'iwa site supervisor. "In addition to being a wonderful team bonding experience, we felt a sense of pride knowing that we are making this area a little more welcoming for residents and visitors."

In addition to Adopt-a-Highway, Monsanto has supported other local non-profits including Hawai'i Red Cross, Institute for Human Services, Hawai'i State Farm Fair, Kapiolani Medical Center, Hawai'i Food Bank and the Soil & Water Conservation District, among others. To learn more about the company

and their work in the community, visit www.monsantohawaii.com.



2015 May Day Festival at Waimea Valley

The popular phrase “May Day is Lei Day in Hawaii Nei” coined by Grace Warren that speaks to the one special day, local writer Don Blanding suggested in 1927. This innovation from a European celebration for the first day of Spring would be a day where making and wearing lei is celebrated. Lei Day festivities in and out of Hawaii usually feature hula, Hawaiian music and local food along with lei making demonstrations and contests. Wherever you are in the world, wearing or giving a lei on Lei Day happens to be another example of living local.

This year, Waimea Valley will be hosting their 2015 May Day Festival on Saturday, May 2, 2015. This free community event will begin at 10:00 am on the main lawn. There will be a community lei contest where participants can enter their lei in any one of five categories, Native Hawaiian, Most Unique, Recycled, Fresh Flowers and a Children’s Category (4-12 years). Live Hawaiian music, local food, and hula performances will also be featured highlights of the day. Here is a look at what to expect and what you’ll enjoy with us:

7:30am-10:00am: Entries for our community lei contest will be accepted

10:15am-10:45am: Performance by Halau Hula Makana a ke Aloha

10:45am-11:15am: Performance by Na Wahine o ka Hula mai ka pu’uwai

11:15am-11:30am: Performance by Waimea Valley Ohana 3

11:30am-12:00pm: Performance by Halau Napuaalulikeonaleino’eau

12:00pm-12:15pm: Performance by Waimea Valley Ohana 3

12:15pm-12:30pm: INTERMISSION

12:30pm-1:00pm: Performance by Halau Ho’oulu i ke Kapa

1:00pm-1:15pm: Performance by Keali’iokekai Moku of Ke Kai O Kahiki, 2014 Ke’alohi Hula Competition Winner

1:15pm-1:30pm: Winners of the Community Lei Contest will be announced

1:30pm-1:45pm: Waimea Valley Ohana 3 will perform “Kamakani O Waime” and all of the participating halau are invited to dance.

Paying a visit through Waimea Valley’s botanical collections, historic sites and ending at the waiile is another option to explore. We look forward to enjoying our Lei Day festivities with you.



Earth Day 2015 Event

Presented by
North Shore Outdoor Circle & Celestial Natural Foods

**YOU ARE WHAT
YOU BREATHE
and EAT & DRINK!**

Learn about Pesticide Spraying and the “Drift”

Saturday, April 18 6pm - 8:30pm

at WAIALUA COMMUNITY ASSOCIATION

(Across from the Post Office in Haleiwa)

**What are the health consequences of exposure
to toxic agricultural chemicals in our community?**

Guest Speakers

Dr. Ashley Lukens, Hawai‘i Center for Food Safety

Lorin Pang, MD, MPH

Representative Chris Lee, District 51

Meleana Judd-Cox, Organic Farmer

as seen in the North Shore News



**Farmers' Display Tables - Come Early and Chat
Enjoy Light Refreshments - Door Prizes**

For more information call Rex Dubiel at 393-7122



MĀLAMA PŪPŪKEA- WAIMEA MARINE SCIENCE TALK STORY

Join us on Saturday, April 18th, 2015 from 5:00pm – 8:00pm at the Sunset Beach Recreation Center

Learn about how traditional Hawaiian concepts of resource management help to improve the health of the Pūpūkea-Waimea Marine Life Conservation District, how you can help protect the marine ecosystems of the North Shore, and how to achieve our community vision of “more fish and healthy reefs.”

This event is open to the public and free. Light pupus and refreshments will be provided. For more information, please contact Jenny Yagodich, Director of Educational Programs at kaipuna@aol.com or visit our website at www.pupukeawaimea.org.

The Sunset Beach Recreation Center is located at 59-540 Kamehameha Hwy.

Palakiko Yagodich

(Professor - Kapi'olani Community College)

Traditional Hawaiian Ahupua'a Principles and Values

Laurent Pool

(Conservation Land Specialist – Waimea Valley)

“Conservation Initiatives Connecting Land and Sea”

Presley Wann

(President - Hui Maka'āinana o Makana)

“Traditional Ecological Knowledge, a Basis for Modern Policy and Community Based Subsistence Fishing Areas”

Alan Friedlander

(Chief Scientist – Pristine Seas, National Geographic and Director – Fisheries Ecology Research Lab, University of Hawai'i)

“A Global Perspective on Hawai'i's Coral Reefs”





BANZAI NORTH SHORE WIRELESS

Miss North Shore, Keala Patterson is a Tandem Surfer

It is a beautiful thing to smile from ear to ear with a crown on. When I first saw Miss North Shore, Keala Patterson, she was in a parking lot looking for an art gallery. What a smile she had with a crown on her head and a determination to get where she was going. I knew she had something beyond beauty. Patterson will represent the North Shore in the upcoming Miss Hawaii pageant on May 30th at the convention center. Her relationship with the North Shore began generations back when warriors of Kamehameha settled in Anahulu Valley. Her family has connections of founding Haleiwa Mission and Waialua Church.

She is a busy girl. She is a senior at Hawaii Pacific University, an intern at the State Capitol, a secretary in a law office, a café employee, a tandem surfer, and a black belt in Karate. "It's a lot to juggle but I love it," she said. "A few years ago, I decided I wanted to run for Miss Hawaii and that I would wait a few years to prepare, learn more, and mature. This pageant is a scholarship pageant. Each girl that enters these pageants at the local, state and national level walks away with some amount of scholarship depending on what schools participate."

As a title holder and contestant, it is expected that she be very well-spoken, professional, personable, charitable and to be a positive role model and active in community service. For her talent for Miss Hawaii Keala will be doing a karate movement something she practices at her family's dojo in Waianae. She is also a tandem surfer who teams up with her brother and has been a finalist at the Buffalo Big Board Classic. "I love tandem surfing and recommend it to people. I've seen tandem teams of father-daughter, friends, husband-wife and in my case brother-sister," she explains. "My favorite thing about tandem surfing is being on a wave doing lifts like the 'grass-shack' or one arm back and looking at the horizon backwards and trusting my brother, it's a moment of peace." Good luck to her and we trust that she will represent the North Shore with great success! She is currently raising money for Kapiolani Hospital Children Miracle Network. Go to this link to help her out! <http://missamericaforkids.org/donate/kealapatterson>

Quiksilver Body Surfing Extravaganza

Mike Stewart, in a tight battle with long time body surfing rival Mark Cunningham, won the Quiksilver Body Surfing Extravaganza. Surf was small in the 1-3 foot range and the event was held at Ehukai the more consistent peak in the area. Super glassy conditions prevailed all day and about 45 contestants were up for the challenge! Body surfing is the art and sport of riding a wave without the assistance of any buoyant device. Bodsurfers typically equip themselves only with a pair of specialized fins that optimize propulsion and help the bodysurfer catch, ride and kick out of waves. It is considered an art form and most of the wave riders love the feeling of having nothing but their bodies to pull off the spins, tube rides and off the lips that they do in the surf. The event was sponsored in part by Haleiwa Joes Restaurant, Viper Fins, Da Fin and the Lifeguard Association. Thanks to Rick Williams for the organization. This event is a community service style event run in conjunction with the Surf n Sea Pipeline Womens Pro presented by Brazilian Show Room and the WSL Pro Junior. Thanks to Faith Wenzl for her kokua in providing this opportunity to all the wave riders.

Results Body Surfing:

Mike Stewart
Mark Cunningham
Shayne McIntyre
Jason Nakasato
Jesse King
Craig Watson
Bryan Phillips
Mathew Humphreys
Pomai Hoapili
Kanealii Wilcox
Mel Keawe

Abe Lerner

Sean Enoka
Kai Santos
Todd Sells
Jeff Hubbard

Surf Racing:

Todd Sells - Mathew Humphreys
Jeff Hubbard - Matt Soloman
Craig Watson - Mike Lorne

Highest Woman:

Scotti Schafer

The Surf n Sea Pipeline Womens Pro presented by Brazilian Show Room got the nod from Faith Wenzl the WSL administrator and crew.

Surf was small the first day but great spring conditions and a good way to kick off the event. Top seed, two time World Champion Carissa Moore did not find enough waves to advance out of the very first heat. Sister Cayla Moore missed the day due to her appearance in Kamehameha's Song Contest, a requirement of the school. Cayla is a senior and the class won the event so a good reason to miss Pipeline! In heat two Sophia Bartlow from Long Beach California was the stand out with fellow mainland surfer Natalie Anzivino advancing. Local North Shore surfer Bailey Nagy won her heat easily.

The second day saw 4-6 foot roping Pipeline and a challenging situation for all the Women surfers. Good in the morning and windy in the afternoon. In the morning heats stand outs included Anastasia Ashley who is a previous winner of the event, Frankie Harrer, USA, Hawaii's Moana Jones who eventually made the final taking 4th and the Big Island's Kehanu Delovio. Bianca Valenti from San Francisco area another previous winner was on fire but just missed out in her semi. She received the best wave award for the day. Hawaii's Melanie Bartels was also kicking okole all day and ended up in third place. North Shore surfer and rising star Honolulu Blomfield flew in just making her heat and then took a second. Winning the event was Kauai's Keala Kennelly who was solid the whole way through winning every heat and slamming the hardest off the lips she possibly could. She also found the best tube ride of the day winning an alaia board trophy made by surfer Jenn Miles. Kennelly was on a mission to win. She used every bit of her competitive know how and her big wave experience. Kennelly, 36, has been ranked as high as second in the world and is known for her crazy big wave adventures scoring several XXL titles along the way. "I've been surfing out here since I was about 12, so I've put in a lot of time," said Kennelly. "Being a big wave surfer definitely helped today. I've taken my fair share of beatings, so for sure it helps to not be intimidated when the conditions are heavy like they were this afternoon." You also might know Kennelly from her stints as an actor in the movie "Blue Crush" and The Surf N Sea Pipeline Women's Pro is a QS1,000 event sanctioned by the World Surf League, and is run in conjunction with the Pipe Pro Junior Men's event.

Kick back into a

NEW or USED CAR...

AUTO RATES

STARTING AT

3.99% APR

Visit us today.



WAIALUA FEDERAL CREDIT UNION

67-292 GOODALE AVE #A2

(808) 637-5980 • WWW.WAIALUAFCU.COM

Waialua

General Store

*Across Waialua Post Office
Next to Laundromat*

Onolicious

Steak Plate Special
with FREE Soda
Wednesdays \$7.95

Most Delicious Filipino Food
on the NorthShore
EVERY DAY

Business Hours: 10 a.m. – 7 p.m.
7 Days a Week

Phone: (808) 637-3131



Polynesian Treasures

*Hawaii's largest selection of Polynesian
handicrafts and Hawaiian inspired gifts.*

North Shore Marketplace * Haleiwa, Hawaii
Open daily from 10 am * (808) 637-1288

Haleiwa Evangelical Mission International



Come and join us
Sunday's at Waialua
Elementary School Cafeteria

Sunday School at 9:00 am
Worship Services at 10:00 am

For Prayer
Call 637-4567

Blessed to be A Blessing

"Children's Church"

Grinder's Championship

This past weekend, the U-12 Boys North Shore AYSO's representative in select soccer made a play-off run for the ages. Representing Region 289—the north shore—twelve boys known as the Grinders did just that, grinding their way through several tight games to make the play-offs as the 3 seed. Facing 2nd seeded Aiea in the semifinals, the Grinders travelled to Kaneohe and fell behind 1-0 early in the game. Then, Sebastian Sneed tied the score with a strong volley, and as the game rolled on, the score remained tied 1-1. That is when Nickolas Widner found space on the left side and chipped in the go ahead goal with less than five minutes left. But with seconds remaining, Aiea made a run down the right side, breaking in on the Grinders goalie. La'akea Yagodich stood his ground and made the big save to send the Grinders to the Finals.

The finals were at Waialae Iki Field near Koko Head...just down the road a bit. Again, the Grinders made the road trip to face Diamond Head, who had not lost a game, had scored over 30 goals, and had allowed only 1. Only minutes into the game, Jonah Cicatko found Bay Anderson down the left side. Anderson managed a nice cross and found Sneed for a lightning quick goal and a 1-0 lead. As a tight

game unfolded, that score held all the way into the final quarter. But with only 4 minutes left, Diamond Head lofted a long, looping shot that found the back corner of the net, tying the score. Then, with the wind in their faces, the Grinders attacked down the right side, with Sneed streaking past the defense. His cross found an open Ledges McNamara who attempted a shot right as the Diamond Head goalie arrived. With McNamara and the goalie down, the ball slid over to Aidan Curti, who sent a shot on goal. The lone Diamond Head defender caught the shot in both hands. The sure goal was not to be, but a penalty kick was awarded. With less than two minutes left, Keegan Daniels stood over the PK and eyed the goalie. His rocket shot found the upper left side of the net and created an eruption of green jerseys on the field. Not long after, the final whistle blew, making the championship official. Congratulations to a group that really understood the meaning of team play and of having roles to fulfill. Success finds the good kids more times than we know it. Go Grinders !!!

The Grinders want to thank everyone in region 289 for their help and support during the season. The Grinders also want to thank the fans...the best fans on the island!



“Say What You Feel”

Just arriving back in Hawaii from their spring tour, Ron Artis II and Thunderstorm will be having a concert, April 17, 2015 Live at Surfer The Bar, 8 p.m., cover charge is \$10.00 at the door. Quadraxonix is opening the evening with a very special guest appearing later in the evening.

Ron Artis II and Thunderstorm recorded their new album in Vancouver, Canada during their tour. The album “Say What You Feel” is due out this summer.

Contact: Ron Artis II: managing@ronartisii.com



*Letters to
the Editor*

Dear Editor,

I am writing to commend the North Shore Outdoor Circle (NSOC) for its initiative to inform our community regarding the latest research on the health consequences of pesticide drift at an educational forum on Saturday, April 18, at the Waialua Community Association from 6 to 8 p.m.

The timeliness of this information sharing is important since pesticide drift can affect all of us and most importantly our children. Increasing public awareness about health and environmental issues associated with the detrimental effects of pesticide exposure on humans led to recent legislative initiatives on Maui, Kauai, and Hawaii Island to enact protections on the use of pesticides. During this legislative session, there were four bills drafted for consideration by both the House and Senate which reflect growing public concern and resistance to the unrestricted use of pesticides.

Along with the rapid growth of public awareness about the risks of pesticide exposure is the increasing number of articles, reports, and research which provide new information on the health impacts. There is a growing body of research on this subject from numerous organizations such as the University of California Davis, Duke University, and the World Health Organization (WHO). These studies reflect the detrimental effects of exposure to frequently used toxic chemicals, including pesticides.

Being informed about important public health and safety issues that impact our community is vital to understanding the consequences of pesticide exposure and to safeguard our community and the surrounding environment. This is especially critical on the North Shore since we get the downwind effects of pesticide drift. The NSOC's informational forums are designed to not only disseminate important information of community interest, but also to educate and encourage conversations regarding these issues.

Thank you, again, to the North Shore Outdoor Circle for stepping up and educating our community.

Edward Shanahan
LTC, US Army (Ret)
Sunset Beach

*Happy Administrators
& Secretaries Day!
April 22*

Dear Editor,

When elephants fight, the grass gets trampled. We the taxpaying "grass" do not want to underwrite the lies of "on-time" "on budget" rail proponents.

STOP/CHANGE Rail or find new revenue resources. Casino, boats, state lottery, daily transit pass surcharge on each hotel room, etc.

Ernie Martin's 3/15 editorial in the Honolulu Star Advertiser is the same old Pacific Resource Partnership's con job.

New ideas or new leadership.

Sandie McDonough

Dear Editor,

At the last North Shore Neighborhood Board meeting, I heard testimony from speakers on the issue of regulation regarding pesticides. One of the speakers supporting more regulation was Ashley Lukens, from the island of Kauai, who works for the Hawaii Center for Food Safety. She was backed by North Shore residents who testified in agreement with her views. The speakers against more regulations were N. Shore small farmers and other North Shore residents. These farmers testified that more regulatory rules could put them out of business. It is my sincere hope that our elected officials listen to these farmers. These are your constituents, and not someone from Kauai who is funded by mainland money. Please do not bow to pressure from individuals who do not farm and who are not experts in what farmers do everyday. We are told to support our Hawaii farms and to "buy local". We are counting on our elected officials to support & protect our N. Shore famers, not sell them out.

Dee Montgomery-Brock

THE THREE IN ONE AND ONE IN THREE

Light floods in though we resist
through minute cracks, it will resist
consciousness in us all expands
only through our open hands.
Once glimpsed, it cannot be ignored
acknowledge it, it will reward.

Be at peace, a state of grace
with heart and mind in the same place.
Be the three in one and one in three.

To communicate, express your heart
your feelings and your fears impart.
To share yourself and truly give
limitless you fully live.

By Sue Lucas
15th October 1985
Honolulu, Hawaii.

Commodity Supplemental Food Program

Receive a 32 lb, Food Box

Eligibility Requirements:

- Must be a senior, 60 years or older.
- Applicant must show identification.
- Household income limit of seniors must be on or below 130 percent of the Federal Poverty Income Guidelines.
- Must be a resident of Oahu.

Sign up Wednesdays at the North Shore Food Bank at the Waiialua Community Association, 9:00 a.m.

"This institution is an equal opportunity provider."

WAIALUA FARMERS' CO-OP MARKET

WAIALUA SUGAR MILL GROUNDS
SATURDAYS
8:30 A.M. – 1:00 P.M

BUY DIRECTLY FROM FARMERS

KAHUKU FARMS
WAIALUA FRESH
FIELDS OF ALOHA
TWIN BRIDGE FARMS
DEL'S TROPICAL FLOWERS
T & L FLOWERS AND PALMS
WAIALUA COOPERATIVE FARMERS

FOOD VENDORS

NOK THAI COOKING HAWAII
MARIZA BICOL EXPRESS: FILIPINO FOOD
AND MORE

A MARKET MANAGED BY FARMERS
EDITH: 637-8589

BULLETIN BOARD

BOW WOW BUNGALOWS

Licensed Boarding Kennel
North Shore, Oahu
Reasonable Rates
Ph. 637-2562
These Dogs Have Fun!



Ernie Doak Plumbing, Inc.

Quality without Compromise

NEW CONSTRUCTION • RENOVATION • SOLAR
Serving Oahu's North Shore for over 20 years

ERNIE DOAK cell 295-7943
Lic. #CT-22113 office 638-8620
Lic. #PJ-10630 erniedoakplumbing@yahoo.com

ILAN FREITAS

☎ 808 372-8848
a any part of the island
e greenwaveslandscaping@yahoo.com



yard maintenance
grass planting
sprinkler system installation & repair
landscaping design & renovation
dirt removal
commercial & residential
no jobs are too big or too small



SUNSET AUTO SERVICE, INC.

- Auto air conditioning specialist
 - Auto engine maintenance
 - Safety inspection station
- Walking distance to Wahiawa DMV

Call for appointment
622-5510

Matt Verdadero
207 N. Cane St., #1 Wahiawa



"THE BULLETIN BOARD THAT IS IN EVERYONE'S HOME"

BULLETIN BOARD



Specializing in vegetarian foods, vegan foods, whole foods, organic food. Wheat free, dairy free, raw foods, gluten free. A complete selection of natural foods for 41 years. Make earth day, everyday. Open 7 days. Mon.-Sat. 9am-7pm. Sun. 9am-5pm

66-445 Kam. Hwy
Haleiwa, Hawaii 96712
Next to the Post Office
808-637-6729 • 808-637-1922 fax



DR. PORTER TURNBULL
Chiropractic Orthopedist
(808) 638-8740
Appointments available Mon.-Sat.
(evenings by appointment)

- Industrial accidents & auto injuries
- Sports injuries • Spinal care
- Safe, Effective, and Gentle

N-C PLUMBING & SUPPLY

Cont. Lic. No. C-8913



- RESIDENTIAL & COMMERCIAL SALES & SERVICE
- CONTRACTING & DESIGN • HOME PLUMBING SERVICE
- PLUMBING FIXTURES, HEATERS • FREE ESTIMATES

Nestor P. Calilao (Owner)
P.O. Box 769
Waialua, HI 96791

Bus: 637-8662
Res: 638-5157
Cellular: 372-8718

TAHITIAN CARDIO

EXERCISING ISLAND STYLE

WAIALUA COMM. ASSOC.
66-434 KAM. HWY.
HALEIWA, HI 96712
SATURDAYS 10-11 AM

KALENA'S POLYNESIAN OHANA
CALL: (808)782-5025
WWW.KPOHANA.COM
CLASSES | SHOWS | FOOD | RETAIL

HALEIWA MASSAGE

Shiatsu, Lomilomi, Thai
Hawaiian Body Scrub

551-9604

Haleiwamassage.com



COWPER CONSTRUCTION

LIC. #AC 18275

GENERAL ENGINEERING CONTRACTOR

Full Service Sitework

Contractor

Septic Systems & Tanks

Since 1978

Michael Cowper 638-7200

cowperhawaii.com

Munden Design & Build

Lic.#BC19632

Design • Plans • Permits • Construction
Additions & New Residences

808 391-8616

Providing quality work since 1978

NORTH SHORE PHOTOGRAPHY

HALEIWA, HAWAII

Celebrating 40+ years of Professional Photo Services
and Historic Images to the Community.
search: northshorephotohawaii.com

New Construction • Drain Cleaning
Got Leaks? Call Greekz!
• Line Locating • Copper • Galvanize
Residential • Commercial • Remodels

372-1820
Greekz Plumbing
#C-32939
Plumbing Service & Repair

Greekz Plumbing

License# C-32939

The Lawn Ranger-

We put the law back into your lawn,
no yard too hard,
no lawn too far gone...

Trees, hedges, hauling,
multi acre properties.

Fully insured, 25 years experience.

258-6439



**North Shore
News 2015
Special
Editions**
Publication Date

Call for special rates & to reserve ad space

637-3138

NShoreNews@aol.com • NSN4Linda@aol.com

Edition	Deadline Date
April 29 Mother's Day, Real Estate May Day, Cinco De Mayo	April 17
May 13 Congratulations Graduates, Memorial Day	May 1
May 27 Restaurant, Food Trucks & Farmer's Market	May 15

**Wonderful News!
The North Shore News
Goes On-line!**

Why wait for the mailman? Get your news fix the modern, easy way. Follow the action on the North Shore from your living room in Haleiwa, in town, or on the mainland.

... On your computer, your tablet, your cell phone

... And in **TECHNICOLOR**

It's easy. Just visit <http://ac003aix.com/artmgr/> for up-to-date happenings on Oahu's legendary North Shore, home of surfing's "Nine-Mile Miracle."

Or, email NSNews@aol.com using your home email address. Write, "Send the North Shore News to me," in the title block. That's it! Each issue will appear in your in-box every two weeks!



Keala Kennelly Photo: Mike Latronic/WSL



CLASSIFIEDS

The North Shore News is published every other Wednesday and mailed free of charge to all North Shore homes and businesses. Extra copies may be obtained at our office.

PRESS RELEASE POLICY: Submit press releases in person or by fax, mail or email to Editor, North Shore News, 66-437 Kam. Hwy., Suite 210, Haleiwa, HI 96712. Please type your releases and keep them shorter than 200 words unless they are of an unusual news interest. Releases should be viable news stories and are published on a **space available basis only**, with priority given to those received in our office first. You may attach photos. We are not responsible for the return of any photos. All materials are submitted at owner's risk. We reserve the right to edit and/or refuse all submissions including advertising.

EDITORIAL POLICY: We welcome articles and letters from our readers. Letters to the Editor are published on a space available basis only and preference is given to shortness of length, and quality of content. We prefer to run not more than one letter, per person, per 6 month period. Letters subject to edit.

Views expressed by our contributing writers and advertisers do not necessarily reflect the view of the management and staff of the North Shore News. All rights reserved. Reproduction in whole or part without permission is prohibited. © 2014.

Editor & Classifieds

Linda Seyler

Typography

Downtown General Store

Contributing Writers

- Tom Jacobs
- Betty Depolito
- Naty Hopewell
- Choon James

- City Councilman Ernie Martin
- State Representative Lauren Matsumoto
- State Representative Feki Pouha
- Senator Gil Riviere

Photography

Banzai Productions
Ole Seyler



Please recycle this newspaper.

SERVICES

SHORE ELECTRICAL SERVICE
New Const-Remodels
638-0049 / Lic#C20777

PARADISE PLUMBING INC.
New Const • Repairs • Remodels
808-368-1473 / Lic. 29856

Lawn Care For You
Mowing, Trimming, Light Hedging
Call Thomas 637-5839

Computer Problems?
I can fix any MAC or PC.
Chris 371-3089

Construction Services
Single wall, windows
New & remodels
Free Estimates
260-7386

Carpentry & Painting Services
Repairs/Remodeling, Termite Rot
Doors, Cabinets, Countertops, etc.
Reasonable Rates 271-6584

Dog/Cat Nail Trimming
at your home only \$15.00
Call 637-5395

Honolulu Tires
New and Used Tires
Lowest Price on the Island
916C Kaaahi Place
Honolulu, HI
841-2222

North Shore Pressure Washing NSP
Specializing in exterior, driveways,
houses, mold removal. For free
estimates call 781-4413

Hank's Welding
Certified, mobile, fabrication &
Installation services. Specializing
in stainless steel welding.
690-0392

Andres Plumbing
All your plumbing needs
808-256-7337 Lic#C24500



Scott's Painting Service
Latex, Oil, Stairs, Power
Washing, former union
Painter. 30 yr. Resident.
489-6317

Time for Spring Cleaning!
If you are looking for honest,
dependable, detail oriented cleaning
call North Shore Cleaning Company
today. (310) 944-0370

Paumalu Electric Inc.
C 18074

Residential & Commercial
New Installation & Repairs
Renovations. Remodels
Electric Meter Replacements
Complete Install for Solar PV
Dave Hancock 638-9054

HARVEY'S REPAIR, LLC
24 hrs Towing Service
Specializing in opening
locked car doors
Call any time 478-0333

N.S. Property Maintenance
Power wash, painting int/ext,
deck repairs, extensions,
fences, gates,
carpentry & remodels.
Maintenance, lawn & yard.
Chris 381-5213 / 638-0659

**DILLION SIGN
& Residential Painting**
Haleiwa – 20 yrs. exp.
499-9582

**North Shore
Auto Detailing**
Mobile Service-We Come to You
Billy Ching
808-371-0854

**N.S. Tropical Plants
Nursery**
Large variety of ornamental
Plants and palms
638-0376

**Your Clean Home
Vacation/Residential
Home Cleaning**
Affordable • Reliable
• Green Cleaning
For Free Estimate
Call 782-9941

BOBBY'S BODIES
Tuesday evenings at 5:00 p.m.
• Body Toning
Friday mornings at 9:00 a.m.
• Cardio Pump/Fat Burner
For more info: call Bobby, owner of
BOBBY'S BODIES at 637-4150

LC Development
New homes, remodels,
kitchens, baths, decks,
custom metal fab.
BC 15645
342-8350 • 227-2323

PIANO LESSONS
Guitar, Ukulele, Bass,
Singing, Songwriting
637-4635

North Shore Car Rentals
Low cost rental cars.
Rates are low by providing
slightly older cars with a
"local" vibe to them, don't
be fooled. All vehicles are
well maintained and safety
inspected. please visit
northshorecarrentals.com or
call (808) 237-4504.



Like us on Facebook:
[Facebook.com/
NSNewsHaleiwa](https://www.facebook.com/NSNewsHaleiwa)

HOW TO CONTACT THE NORTH SHORE NEWS

Letters to the Editor, and other items submitted for publication consideration may be sent to us via:

MAIL: 66-437 Kamehameha Hwy., Suite 210, Hale'iwa, HI 96712

E-MAIL: NShoreNews@aol.com

PHONE: (808) 637-3138

Office Hours: Monday – Thursday 12 noon-3:30 p.m., Friday 10 a.m.-5:00 p.m.

www.northshorenews.com

CLASSIFIED ADS

LEARN TO SWIM
AT THE
HAWAII SWIM SCHOOL
ON THE NORTH SHORE
Developing swimmers since 1982
Haleiwa Rd. at Smiley Place
637-4863

ANGELS PLUMBING
Repairs
Remodeling
Renovation
638-7878
Lic. #C12004



GERMAN CAR SERVICE
Professional-Qualified
Technician
Call Gary
637-6800



Business Services Center
Fast & convenient fax, copy, scan, computer/internet, laminate, etc.
Across from Haleiwa post office.
637-4558 or GoNorthShore.org

Holo Holo Screens
Mobile Screen Service
New Screen Doors • Window Screens • Porch Enclosures • Window Replacement/Repair
Free Estimates 783-8764



Marianne Abrigo, Properties
Specializing in -
North Shore
Real Estate
Ask for our list of available properties and/or a free market analysis.
Marianne M. Abrigo
"Realtor since 1974"
Office **637-3511**
Fax **637-0777**
Email **mabrigo222@aol.com**

HELP WANTED
BUSSERS/SERVERS
Pizza Bob's in Haleiwa is looking for **BUSSERS/SERVERS**. Experience preferred. Apply in person at 66-145 Kam. Hwy.

COOKS/KITCHEN HELP
Pizza Bob's in Haleiwa is looking for kitchen personnel. Experience preferred, but will consider training the right people. Apply in person at 66-145 Kam. Hwy.

Retail Sales Surf & Sea
Hawaii's Ocean Sports Headquarters is always looking for hard working, energetic people to become a part of our sales team. Good pay, bonus, benefits. Ocean sports experience and/or bilingual a plus. Apply in person daily 9am-7pm
62-595 Kam. Hwy., Haleiwa

FOR RENT
Haleiwa Plantation Shops
Space for lease
\$2500./month
(808) 838-1202

Haleiwa Town Center
Space for Lease
636-2222

TABLES & CHAIRS
780-8037

FOR SALE
High grade stainless steel pipe, (sch40) from 1" to 8" size pipe, 20 foot in length, SS tubing 1/2" to 3/8". If interested call Hank 386-3992 or 690-0392.

MISCELLANEOUS
If you do not want to receive the North Shore News in your mail box please email: NShoreNews@aol.com
RE: "Discontinue NSN" with your mailing address information.

Next Issue - April 29, 2015
Deadline Date April 17, 2015

CAR WASH
May 9, 2015
Saturday, 8 a.m.-1 p.m.
Waialua Comm. Asso.
All proceeds go to the North Shore Food Bank.

Voice of God Ministries
Jesus Loves You
For Prayer
Call 808-373-0294

North Shore Food Bank
Food bag distribution
Wednesdays at Haleiwa
Gym across from
Post Office
9am-12pm

New Hope Haleiwa
"Anchored to God's word, led by his spirit" @Haleiwa Elementary School
9:00am Service
621-9363

Don't throw away that old BIKE!
Donate it to
Yikes Bikes
A non-profit program at Waialua High & Intermediate School
637-8200
M-F • 8 a.m.-3 p.m.

Queen's Open Market
Sundays 1:00 to 5:00 pm
Liliuokalani Church

Stop Junk Mail
Clear the clutter and reduce paper waste. Create an account with catalogchoice.org, indicate the companies from which you wish to stop receiving mail, and they will do the rest.

Pothole Hotline
768-7777

For Advertising Rates
Call 637-3138
or go to
www.northshorenews.com

OFF da ISLAND
Are you leaving Oahu on vacation or business? Do you live on a neighbor island, the mainland or foreign country and subscribe to the North Shore News? Try send us a photo of someone in front of a sign or landmark holding a copy of the NSN. Email your photo along with the person or persons' name, community of residence, telephone number and photo location to: NShoreNews@aol.com.

Classified Ad Rates
3 lines (min.) \$18.89
4 lines \$25.13
5 lines \$32.45
1" Box Ad \$41.88
(27 characters in each line)
Include your contact information.
**Ads can be dropped off in mail slot, mailed, or emailed. Pay by check payable to: North Shore News or credit card by phone order.*
We reserve the right to refuse any advertisement with a full refund.
North Shore News • 66-437 Kam. Hwy., Suite 210, Haleiwa, HI 96712
• (808) 637-3138 • NShoreNews@aol.com

North Shore News
Next issue Mother's Day
Publication Date April 29
Deadline Date April 17

Ron Artis Family LLC
Arts & Agricultural Center
Call today for music lessons for adults and children.
808-222-7589

Book Sale
Waialua Library
Saturday, April 18
9am-2pm

May Day
Sunset Beach Rec Center
Lei Workshop 15 years/older
Tues., April 28
5:30pm - 7:30pm
Each participant to provide own supplies/equipment or pay a kit fee at class. A material list will be provided at registration.

Book Club
Waialua Library
Thursday, April 23
9:30am - 11:30am



Malama Market Haleiwa:
Open Daily 7 a.m.–9 p.m.
(808) 637-4520

Malama Market Makakilo:
Open Daily 6 a.m.–10 p.m.
(808) 672-9955

Valid Dates:
4/15/15–4/21/15

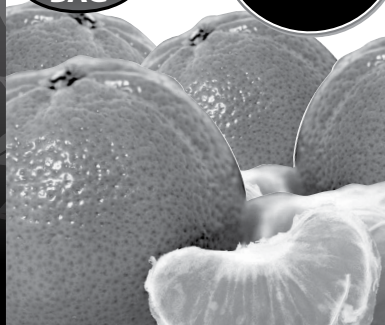
Deals of the Week!

Clementines

2 lb. Bag

2 LB. BAG

2/\$7



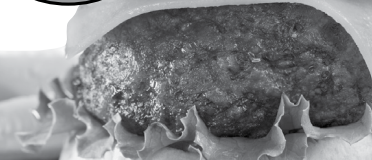
Fresh Ground Beef

80% Lean, Jumbo Pack,
5 lbs. or More

\$4.29 LB.

Cook Internally to 160°F

LARGE SIZE



Coca-Cola

Selected Varieties,
12/12 oz. or 6/500 ml.

\$4.34 EA.
When You Buy 3 or More!



Lay's Kettle Cooked Potato Chips
Selected Varieties,
7–8.5 oz.

2/\$6



Yoplait Greek Yogurt
Selected Varieties,
4–5.3 oz.

4/\$5



Nabisco Nutter Butter Cookies or Honey Maid or Teddy Grahams
Selected Varieties,
4.5–16 oz.

2/\$6.50



Swiss Tea
Selected Varieties,
1/2 Gal.

\$1.19



Hunt's Ketchup

24 oz.
or BBQ Sauce
Selected Varieties,
18 oz.

2/\$3.50



Fresh Baked

1/2 French Bread
8 oz.

\$1.29 EA.



8 Piece Country Style Fried Chicken
2 Breasts, 2 Wings,
2 Thighs, 2 Drums

\$9.49 EA.

8 PC.



Kona Brewing Co., Heineken or Corona
12 Pk. Bottles

\$15.99



Thursday

Grilled Steak Lunch

7–8 oz. Steak, Rice, Tossed Salad, Drink

\$8.99



Hawaii Beverage Fee Hawaii Beverage Fee of 1.5¢ per can or bottle will be added to purchase price at checkout. An additional Hawaii Deposit Fee of 5¢ will be charged for all specially marked beverage containers.

Limit five units (mix/match) per purchase, unless otherwise specified. We reserve the right to limit quantities. No sales to dealers. Prices plus applicable state tax. Hawaii EBT cards welcomed.