



## "E Ala Na Moku Kai Liloloa"

In This Issue:

North Shore Chamber of  
Commerce News  
Page 10

Oral History Project Seeks to  
Record Your Unique Story  
Page 12

Operation: Toy Box  
Pages 13 & 14



Santa at Hale'iwa Parade

NORTH SHORE NEWS December 6, 2017 VOLUME 34, NUMBER 23



Photo: Bernie Paik-Apau

## Thanksgiving Day Celebration in Hale'iwa

On Thanksgiving Day the North Shore community gathered at the Waialua Community Association for the annual Thanksgiving Day Celebration.

This yearly event is sponsored by North Shore News, Waialua Community Association and North Shore Food Bank. The guests and volunteers were treated to

entertainment while they enjoyed their meal and visited with their neighbors. "Every year I look forward to this Thanksgiving event," said one of the guests.

Afterwards the North Shore Food Bank volunteers delivered meals to those who could not attend the event. Everyone was very thankful.

It took a community of volunteers to put together this event from decorating the night before, preparing the food, serving the guests to cleaning up. Mahalo to all for a wonderful and successful event.

See Mahalo list and pics on page 17

PRE-SORTED  
STANDARD  
U.S. POSTAGE PAID  
Honolulu, Hawaii  
Permit No. 1479

66-437 Kamehameha Hwy., Suite 210  
Hale'iwa, HI 96712

PROUDLY PUBLISHED ON THE  
North Shore of Oahu  
Home of  
**Hale'iwa Christmas  
Parade**





## OFF da Island in Osaka, Japan

Don, Myrna, Donna and Andrina Ramos along with Blaise Kise of Kahuku visiting Universal Studios Harry Potter's Hogwarts in Japan.

North Shore News  
2017 Final Edition

Publication Date December 20, 2017  
Deadline Date December 8, 2017

First Edition for 2018

Publication Date January 17, 2018  
Deadline Date January 5, 2018

## The Hale'iwa Family Dental Center, Ltd.



now offering FASTBRACES



- Adults and children
- Most cases completed in 4-12 months
- Clear braces available
- Lower cost
- University tested
- Used for over 20 years

Produced by Todd R. Okazaki and Staff

"Straighten those crooked teeth that have bothered you for years"

Conveniently located behind First Hawaiian Bank in  
Historic Hale'iwa Town  
Call 637-9652 for your reservation

## Family Fun at St. Michael School Christmas Luau, Benefit Fundraiser!

Saturday, December 9th at 6 PM  
Silent Auction, Polynesian Entertainment,  
Hawaiian food

Ticket sales at [stmichaelschoolhi.com](http://stmichaelschoolhi.com) before 12/1  
School Office Phone: 637-7772

## Christmas Extravaganza!

Friday, December 15th 4-9 PM  
Crafts, Food Booths and more!

FREE ADMISSION

vendor space available, register online







# CHRISTMAS BRUNCH *and* FREE CONCERT

**SATURDAY DECEMBER 23**

WAIMEA VALLEY PIKAKE PAVILION/MAIN LAWN

**BRUNCH** 2 Seatings, 10 AM and 10:30 AM

CATERED BY KE NUI KITCHEN

*Pikake Pavilion*

**RESERVATIONS: WAIMEAVALLEY.NET OR 808-638-5000**

\$49.95/Adult, \$29.95/Keiki (age 4 - 12). *Includes all tax and gratuity!* Plus free same-day Waimea Valley admission and premium concert seating in the Pikake Pavilion. Reservations recommended, walk-ins welcome.

**'AHA MELE CONCERT** 11 AM - 2 PM

FREE & OPEN TO THE PUBLIC!

*Main Lawn*

**FEATURING MAILANI, PAULA FUGA, & JERRY SANTOS**

**GIVE THE GIFT  
OF WAIMEA VALLEY**

ON SALE THROUGH MONDAY DECEMBER 25

**20% OFF ANNUAL PASSES**

**\$5 DAY PASSES (or 5 for \$20)**

Valid December 26, 2017 through December 31, 2018



**WAIMEA VALLEY**  
HI'IPAKA LLC

Botanical Gardens, Cultural Activities, & Waterfall

On the North Shore Across from Waimea Bay

Open 7 Days a Week, 9am - 5pm

Call: (808) 638-7766

WHERE HAWAII COMES ALIVE

WAIMEAVALLEY.NET

**BODY ACHES ALL OVER**  
**Feels like a fever yet I'm freezing cold**  
**MY HEAD SQUEEZED**  
**LIKE A VICE** Looking at a nearby sink  
**where I just might *THRO***

Get a flu shot



**KMC offers the flu shot with a FREE flu survival kit, while supplies last**  
Mention it when you get your shot. (808) 293-9221 [www.kmc-hi.org](http://www.kmc-hi.org)

**KAHUKU MEDICAL CENTER**

Christmas  
**PRESENCE**

NEW HOPE HALEIWA CHRISTMAS CELEBRATION SERVICE  
HALEIWA ELEMENTARY, SUNDAY 9AM

A dark gray rectangular graphic. At the top, there are four white snowflakes. The word 'Christmas' is written in a large, white, cursive script. Below it, the word 'PRESENCE' is written in a bold, white, sans-serif font. The text is flanked by white holly leaves and berries. At the bottom, there is a white laurel wreath with a circular medallion in the center containing a white dove. The entire graphic is framed by white pine tree silhouettes on the sides.



# Mele Kalikimaka!



*From the Martin Family*  
*Becky, Ernie, Mallory, Melanie & Buddy*

Paid for by the Friends of Ernie Martin, P.O. Box 892727, Mililani, HI 96789



## OFF da Island in Methven, New Zealand

Waialua residents Erik and Lisa Remick are pictured here at Mt. Hutt Village.

**WINTER IS HERE  
BUT THE COOLEST SNOW  
IN HAWAII IS AT PKB!**

**COOL OFF WITH OUR  
\*SIGNATURE\* SNOW PUFFIES!**



**Made Fresh  
Daily**

**YES! CALL US!  
WE ACCEPT  
PHONE ORDERS  
(808) 637-9795**

**Visit us online  
[www.pkbsweets.com](http://www.pkbsweets.com)**





*The Surf N Sea 29th Annual*  
**12 DAYS OF CHRISTMAS**  
**GIVEAWAYS!**  
**DEC. 13TH TO DEC. 24TH**

**HERE'S HOW TO WIN:**

Grab a FREE sticker at Surf N Sea. Stick it on your car, your bike - whatever's your ride. From Dec. 13 to Dec. 24, the Surf N Sea Elves will be cruisin' the island and if they spot you YOU WIN! It's that easy! Stop by the shop for more details or visit our website at [www.surfNSEA.com](http://www.surfNSEA.com).

GET YOUR  
STICKER  
TODAY!



62-595 Kam Hwy. Haleiwa  
Mon. To Sun. 9am - 7pm  
1-800-899-SURF (7873)  
[www.surfNSEA.com](http://www.surfNSEA.com)



## Talking Story with Tom Jacobs

### The Sound of Freedom

Let's talk about helicopters. The North Shore has lots of 'em ... tourist helos like little bugs, and the Coast Guard bird that circles the island daily ... but I'm talking about those Army helos flying from Wheeler Army Air Field next to Schofield Barracks. Flying alone or in twos and threes all hours, day and night ... seems like all the time sometimes.

It's the "all the time" part that bothers some folks. I've been at community meetings, twice, listening to community complaints about Army birds flying over residences at night, interrupting sleep.

An Army Black Hawk helo went down off Kaena Point on 16 August of this year; three months ago. All five crewmen were lost, their remains still at sea a few miles from all of us. Those soldiers died doing their job, which was ... is ... national defense. That means defense of us. The helos flying days, and nights, and Saturdays, Sundays, and holidays are defending us. When they're not on Oahu they're in Afghanistan or Iraq or somewhere else defending us. While they're up over the North Shore some crew member's teen-aged wife is tucking her child in bed and pouring herself a cup of coffee while she awaits ... endlessly ... for the phone call that will tell her that her husband is back, safe. Then she can go to bed. Then her husband can post-flight his bird, finish paperwork, drive home, turn in next to his wife in bed, and turn out tomorrow morning to do it all over again.

That's what they do at Wheeler, every day.

While the Army was searching for that Black Hawk and those five troopers last August they set up a command post at Haleiwa Harbor. Did any of us North Shore folks go down there to tell the men and women on that search-and-rescue mission that we were sorry, that we hoped and prayed that the search would have a good ending? I know I didn't. Wish I had. But I do know this ... when I see an Army vehicle coming the other way on Kam Highway I'm gonna roll my window down and give 'em a thumbs-up. And when I see a soldier ... or sailor or airman ... in uniform in town at Joe's or the Beach House or someplace my wife and I are gonna buy them the meal or the drink they're having. You can say we're doing it for those five troopers asleep off Kaena Point, and for their comrades flying over our house at 3 a. m.

That's not a helo we're listening to. That's the sound of freedom.



**OPERATION TOY BOX**  
HELP TO MAKE A CHILD'S CHRISTMAS SPECIAL

**POLO**  
Adoption Open at 11am  
Adoption Start at 2pm

**GENERAL ADOPTION \$10**  
**VIP ADOPTION \$25**

**Oahu SPCA**

**Adopt Sunday!**  
December 9<sup>th</sup>  
11am ~ 2PM

### The Friends of Waialua Library need YOU!

Volunteers have fun, meet new people, learn new skills, help others and become more engaged in the community they live in. We have many opportunities available. Contact the library for more information 637-8286

**DA PKB GANG WISHES  
YOU A HAPPY & MERRY  
HOLIDAY SEASON**

*Make it even better with some PKB treats!*



**Fresh Holiday  
Pies & Cakes**



**Check out our popular  
Cinnamon Finger Puffs**  
now available in 6-pack  
on Tues, Wed, and Thurs  
at 15% OFF the regular  
sticker price

*If you haven't tried one  
yet, you're really missing  
out on a Snow Puffy like  
treat!*

**Sign up for our daBest VIP Club**  
Online @ [www.pkbsweets.com](http://www.pkbsweets.com)



**Representative  
Lauren  
Matsumoto**  
**Serving You in District 45**

Aloha Friends, Family, and Neighbors!

As the year comes to a close, things at the Capitol are starting to ramp up in anticipation of the 2018 Legislative Session. In early November, my office sent out a 2018 Legislative Info Survey to constituents of District 45. Mahalo to many of you for sharing passionate opinions on issues we may be voting on during the Session. In a representative government such as ours, to do my job to the best of my ability, I need to know what your thoughts are on issues that matter the most to you. The deadline to submit your survey is December 18th. I look forward to reading more of your responses, so please send them in! If you live in the district and did not receive a survey, please call my office at 586-9490 or send me an email at RepMatsumoto@capitol.hawaii.gov and we'll be able to assist you.

In addition to completing the survey, another way you can engage with the Hawaii State Legislature is by visiting Legislature's website at capitol.hawaii.gov and create an account – a quick and simple process. After creating your account online, you will be able to create personalized measure tracking lists, submit testimony online, and receive hearing notice notifications by email. If you don't have internet access, you may contact my office, the House Chief Clerk's Office for House Measures (586-6720), contact the House Printshop (586-6590) for free copies of House bills and resolutions.

The Public Access Room (PAR) on the 4th floor of the State Capitol also has resources available to you to be involved in the legislative process such as computers and office supplies to prepare testimony for Legislative Committees, large-print reading materials, complete Session Laws, and more. For additional information and list of services available to you, please visit [lrbhawaii.org/par/parsrvs](http://lrbhawaii.org/par/parsrvs) or give them a call at 587-0478. You may also reach PAR via email at [par@capitol.hawaii.gov](mailto:par@capitol.hawaii.gov). When visiting the State Capitol, you may park in one of the metered parking stalls in the underground parking garage (accessible via Miller Street off of Punchbowl Street). If the public metered parking at the State Capitol is full, there are outdoor metered stalls on the nearby Iolani Palace grounds as well.

As always, please feel free to contact me if you have questions or concerns about any happenings in our community. Call me at (808) 586-9490, email RepMatsumoto@capitol.hawaii.gov, or visit RepMatsumoto.com.

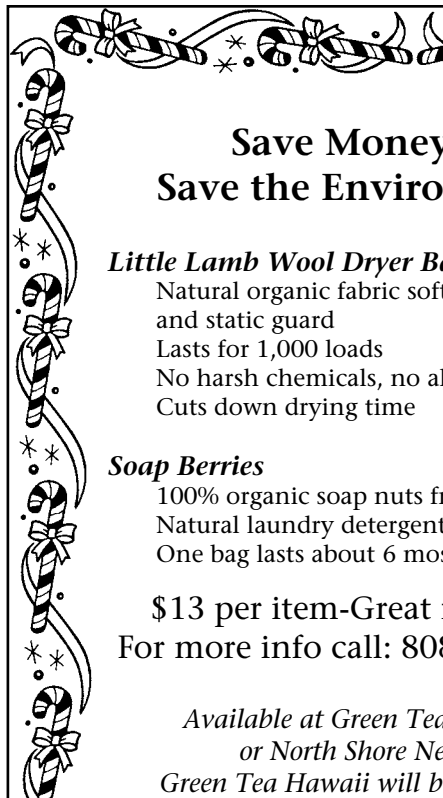


## **The Soap Cellar Haleiwa**

Has all your Holiday shopping needs!  
Next to the Black Pearl Source

**Bring this ad to receive a 10%  
discount on all your purchases!**

[www.thesoapcellar.com](http://www.thesoapcellar.com)



## **Save Money & Save the Environment**

### ***Little Lamb Wool Dryer Balls***

Natural organic fabric softener  
and static guard  
Lasts for 1,000 loads  
No harsh chemicals, no allergy problems  
Cuts down drying time

### ***Soap Berries***

100% organic soap nuts from Nepal  
Natural laundry detergent and cleanser  
One bag lasts about 6 mos. (family of 5)

**\$13 per item-Great for Gifts!**

**For more info call: 808-342-0534**

*Available at Green Tea Hawaii  
or North Shore News.  
Green Tea Hawaii will be donating  
a portion of the proceeds to the  
North Shore Food Bank.*



## Olakino Maika'i

(Good Health)

by Naty Camit Hopwell

### Mumps and Influenza

Tis the season for mumps and influenza. The State of Hawaii has diagnosed more than 600 cases of mumps, most on Oahu and most among adults. You may have received the two shots when you were young, but the immunity may wear out. The State is recommending that anyone born after 1957, ages 10-60, get a booster shot for mumps. If you have had the disease, you are immune for life and don't need a booster. If you develop a fever, headache, muscle aches, weakness, fatigue, pain while chewing or swallowing and have swollen/painful glands at the angle of your jaw (below the ears), get tested, and then stay home until you get your test results.

Another problem in our community is influenza. Most people can weather the symptoms, but thousands die every year from complications of influenza. You can have the following symptoms--moderately high fever, achy muscles (especially back, arms, legs), chills, sweats, headache, cough, fatigue/weakness, runny nose and sore throat. If you develop these symptoms and get an anti-viral medication from your medical provider, you may shorten the length of the disease and prevent complications. Stay home because you are contagious for at least 5 days from the onset of symptoms.

Who's at risk for developing complications? Those at risk are the very young and the old, people on cancer treatment or medications such as oral steroids, those with asthma, diabetes, heart disease, HIV/AIDS, pregnant women and obese people.

Complications include bronchitis, asthma flare-up, heart problems, ear infections and pneumonia.

So, get your flu shot. You may not be 100% protected, but if you get influenza, you won't be as sick. Stay home so you won't expose others. Reduce spread of the disease by washing your hands and cover your mouth with your elbow (not your hands) when coughing.

Please share your joy of the holidays with

## OPERATION: TOY BOX

Sponsored by North Shore News



For every new and unwrapped toy you drop off at **HALEIWA BEACH HOUSE** from now until December 20, receive a **FREE delicious Chocolate Dessert** with your meal. **Compliments of the Chef!**  
All toys are given to the less fortunate children.  
For More Information, call (808) 637-3435



## HALE'TWA CHRISTMAS PARADE!

**Friday**  
**December 8, 2017**  
Begins at 6 p.m.  
from Weed Circle to  
Hale'iwa Beach Park

**Sponsored by**  
**North Shore**  
**Chamber of Commerce**

To participate contact  
the Chamber at  
637-4558



plan  
b PRINTING

yelp.com/biz/plan-b-printing-waipahu-2

facebook.com/planbprintinghawaii/

www.tshirtprintinghi.com

### HOLIDAY SPECIAL

Perfect for gifts, business, or give aways

<b>100 SHIRTS</b> <b>\$500</b> <small>1 Color ink on light colored shirts. Screens &amp; Set Up Included (\$65 value)</small>	<b>100 SHIRTS</b> <b>\$600</b> <small>2 Color ink on light colored shirts. Screens &amp; Set Up Included (\$790 value)</small>
---	--

\* Priced is based on regular t-shirts, from youth small to adult XL. 2x add \$1, 3x add \$2. Restrictions apply. \* MUST PRESENT COUPON. LIMITED TIME OFFER. EXPIRES 12/31/17

**(808) 489-8799**

PLANBJAYMIE@YAHOO.COM

**LET'S MAKE SHIRTS!**



## North Shore Chamber of Commerce News

### Chamber of Commerce Joining with Residents to Save Second Floor of John K. Kalili Surf Center

In October 2014 the community painted the John K. Kalili Surf Center at Ali'i Beach Park as the starting point to preserving the second floor so it could be transformed into a community center. In the following years Chair Emeritus Ernie Martin has included funding in the Council Budget to help with the design and construction, but the Mayor's office has not released the funds.

A recent engineering inspection of the steel beams that support the roof resulted in a recommendation that the beams be sandblasted and three coats of two-part epoxy paint applied as soon as possible so that the beams would not rust to the point that they would no longer be structurally sound.

The Chamber received a quote of \$40,000 for this work and asked the city to release this amount as soon as possible.

The City response was as follows:

"An assessment of the building was completed in 2010. The recommendation from the assessment was to demolish the second floor Baywatch prop. The demolition of Baywatch prop and roof repairs came in at 362k and the repair/upgrade to code of Baywatch prop came in at 2.14M. Possibly, DPP (Department of Planning and Permitting) will not be able to grant a permit for the 2.14M project because of the flood zone issue (i.e. for an existing non-conforming project you are allowed to spend up to 50% of the value of the building in repairs). The recommendation is to remove the movie prop and restore the roof. The 40k project to clean and paint might be better spent on fixing the first floor building.

At the October Chamber Board meeting two Board members, Howard Green, of the Haleiwa Marketplace, and Lee Bryant, of North Shore Equipment Rentals, volunteered to co-Chair a committee to prepare a plan for the second floor that will be submitted to the Department of Planning and Permitting for approval. The community will be invited to participate in the planning. Once the plan is approved the goal is for the City to provide some funding for the project and the community to raise some of the funding.

The Chamber Board understands that getting the needed permits and approvals may be a challenge, but believes that necessary compromises can be worked out. We are all aware of the many

variances allowed to developers in Honolulu and feel that a community project is entitled to special consideration.

The attendees of the October Chamber membership meeting enthusiastically supported the project and 14 attendees volunteered to join the committee.

Friends of Ali'i Beach have long supported the project and will join in the fundraising efforts.

As soon as we have a plan and a budget, the Chamber will be reaching out to members and the community to help with funding. As the Chamber is a 501(c)(3) non-profit organization, any donations will be fully tax deductible.

Chair Martin has confirmed his intention to include funding again for the project in the next Council budget.

In the short term there is an urgent need for the \$40,000 for the sandblasting and painting. Please contact Roxana Jimenez at the Chamber on 808-637-4558 if you can help with the funding.



*Community volunteers paint the John K. Kalili Surf Center at Ali'i Beach Park in 2014.*



## ANNUAL CHRISTMAS PARTY & AUCTION

**WEDNESDAY DECEMBER 13, 2017 • 6:00 PM**

WAIMEA VALLEY PIKAKE PAVILION

HONORING 2017 NORTH SHORE  
KAMA'AINA OF THE YEAR

"Preserving Special Places"

**DOUG COLE**

Executive Director of the  
North Shore Community Land Trust



Enjoy an evening under the stars with great food and entertainment!

6:00 PM Pupus, No-Host Cocktails, Silent Auction

7:00 PM Dinner

8:00 PM Awards & Tribute

Please contact the Chamber at 637-4558 for more information.

Christmas Aloha Attire

Your sponsorship makes the North Shore a better place to live, work and play!





Open 9:30am-9:30pm

Happy Hour: 4-6pm M-F  
(Food & Drink Specials)

North Shore Marketplace  
Haleiwa, Hawaii



## Hawaii's Best Mexican Restaurant & Margarita Bar

WISHING THE NORTH SHORE  
A HAPPY HOLIDAY SEASON!

Let Cholo's Bring The Fiesta To You!

Available for all your catering needs, and for  
extra special events, rent the Cholo's Wagon!

Kama'aina rates and custom pricing on request.

637-3059 www.CHOLOS.mx



### Nancy Anne Greene Frisbie

August 2, 1949–October 13, 2017



Nancy Anne Greene Frisbie: August 2, 1949 – October 13, 2017. Born Pasadena, Ca. to William Nelson Greene (Oklahoma) / Betty Orson Buck Greene (Ohio). The second of four children. Graduated La Canada HS 1967. U. Of California Santa Barbara 1971: Home Economics. Teaching Credentials, California State College, Long Beach. MA Curriculum and Development: Cal State Long Beach. MA Counseling, University of Phoenix. Teacher: Fullerton Union School District, Newport Harbor High School. Real Estate Agent / Broker, Irvine California. Teacher Illima Intermediate and Waipahu High School. School Counselor Lehua Elementary. Outreach Counselor Mililani High School. Retired 2011.

Survived by husband of 40 years, James Frisbie of Waialua. Son Matthew of Lahaina, Daughter Elizabeth and Grandson Max of Haleiwa. Sister, Pattie Schofield, Irvine Ca. Brother Billy Greene of Capistrano Beach, Ca. We were all so privileged to be in her presence during her final months.

Nancy was a most remarkably loving and funny woman. Nancy loved to cook, laugh and entertain. As a teacher counselor, she was a professional. Students loved her, gathered about her. She believed, taught and lived the truth; "Those that are the hardest to love, are the ones that need love the most." Nancy's greatest joys; her family, children, grandson Max. She will be greatly missed.

Nancy's final teaching assignment as an anatomy professor at John Burns Medical School recently concluded. Private services by family will be spring, 2018.



## Kuamo'o Olelo by Malia K. Evans

### Oral History Project Seeks to Record Your Unique Story

History books are dominated with stories of the elite, of government leaders and popular historical figures. Their life stories are reverently recorded through the written word, perhaps on film and photos, remembered through time. Yet, there are many sources of living knowledge that have not been recorded, of everyday people who are intimately familiar with the history of our community.

These untold stories of our kupuna/elders have the ability to reveal a unique perspective about the people, places and practices in our local community. As rural communities face increasing development and population pressures, these stories and histories are quickly disappearing as long term members move or pass away. Do their life stories matter? Absolutely! We use stories to make sense of our lives and to gain insight and understanding of ourselves and our community history.

The North Shore Ethnographic Field School will record these treasured life histories beginning in January 2018. This unique community-based project will pair undergrad and graduate students at the University of Hawai'i at Manoa with community elders in a set of interviews designed to document, preserve and honor their life histories. This opportunity, to tell your own story in your own words, will help train a new generation of students in respectful, ethical methods that empower the community they are engaged in.

The 3-year oral history project is designed to focus on site specific places and document the activities and memories of kupuna/'ohana with place. The Ka'ena, Mokule'ia and Hale'iwa areas will be the focus during the Spring 2018 semester. The students will learn the cultural history of Waialua, visit significant wahi kupuna (ancestral places) and build relationships with community through community events. Students will learn to prepare for and conduct life history interviews as well as how to record, transcribe and preserve these stories utilizing audio, video and digital media resources.

Through the process of recording life histories and engaging with community, we hope to build bridges and strengthen ties between the generations. The field school will meet every Saturday from January through May 2018, with two life history interviews with community elders (1½-3 hours each) scheduled for Saturday mornings between February-March 2018 at various locations on the North Shore.

Individuals who participate will retain all rights to recordings and transcripts generated during the project. There is potential for a community archive of oral histories, but we respect individual wishes to keep their life stories private. Through the documentation of these place-based stories and history, we can inspire and empower our community to protect and preserve the places, practices and lifestyle that makes our community so unique. This project is funded by Kamehameha Schools and is in consultation with the Waialua Hawaiian Civic Club. Please contact Malia Evans at 808-728-7676 or email [evansmas@hawaii.edu](mailto:evansmas@hawaii.edu) or Hannah Anae at 808-237-9322 or email [hannahk@hawaii.edu](mailto:hannahk@hawaii.edu) Mahalo nui! We look forward to engaging and recording your unique story.

**Haleiwa Evangelical Mission International**

**Come and join us**  
**Sunday's at Waialua**  
**Elementary School Cafeteria**

**Sunday School at 9:00 am**  
**Worship Services at 10:00 am**

**For Prayer**  
**Call 637-4567**

**Blessed to be A Blessing**

**"Children's Church"**



### NOW HIRING

DIYers and friendly folks

**APPLY INSTORE OR ONLINE AT**  
[HAWAIIACEHARDWARE.COM](http://HAWAIIACEHARDWARE.COM)

We are looking for quick learners, hands-on problem solvers who love helping our neighbors. If you like a fast paced environment and if you can multitask we like you to join our team.

Immediate openings for the following:

- Assistant Store Manager (FT)
- Sales Associates (FT & PT)
- Backroom (Receiving Coordinator) (FT)
- Lumberyard Associate (FT)

**Come join our team today!**

Flexible Hours, 401K, Medical, Dental, Employee Discount, Paid Holidays, Paid time off and much more.

**Learn something new everyday including lifelong skills to tackle your own projects at home.**



### Haleiwa Location

66-134 Kamehameha Highway  
 Ph# 622-7002

Mon-Sat 7am-7pm  
 Sun 7:30am-5:30pm





IT'S THAT TIME AGAIN!

## OPERATION: TOY BOX



LET'S STIR UP THE TRUE CHRISTMAS SPIRIT!

SANTA NEEDS YOUR HELP TO PROVIDE TOYS FOR OUR DISADVANTAGED KEIKI THIS COMING CHRISTMAS. A BIG MAHALO TO THOSE OF YOU WHO HAVE SUPPORTED OUR OPERATION: TOY BOX EVENT FOR THE PAST 26 YEARS. THIS YEAR WE WILL CELEBRATE OPERATION: TOY BOX ON SATURDAY, DECEMBER 23, 2017 AT HALE'IWA BEACH PARK. A DELICIOUS BREAKFAST MEAL IS PROVIDED AND SANTA WILL GIVE GIFTS TO THE KEIKI AND TEENS. TOYS AND MONETARY DONATIONS ARE WELCOMED. YOUR SUPPORT IS GREATLY APPRECIATED.



TOYS CAN BE DROPPED OFF AT THE NORTH SHORE NEWS OFFICE (ABOVE THE HALE'IWA POST OFFICE), M - F, 10AM - 4PM.

CHECKS CAN BE MADE OUT TO:

NORTH SHORE NEWS

66-437 KAMEHAMEHA HWY #210

HALE'IWA, HI 96712

FOR INFORMATION CALL 637-3138

TOYS CAN ALSO BE DROPPED OFF AT THE NORTH SHORE CHAMBER OF COMMERCE & WAIMEA VALLEY  
SPONSORED BY NORTH SHORE NEWS & ONCE A MONTH CHURCH



# Hawai'i Polo

## Tailgate for Operation Toybox

Wahine Exhibition Match

Beach Bar - Ono Eats

Tailgating - Live Music

**Saturday Dec. 9th**

the North Shore's  
finest outing

featuring  
Oahu's Best lady  
players

Donate a Toy  
for discounted  
admission \*



Gates open at 11am

Matches at 2pm

Music at 5pm



Surf to **HawaiiPolo.com** for tickets and info

Celebrating 54 years of polo  
on the North Shore

\*discounted admission for box office tickets only





## North Shore Surfing Wireless Betty Depolito - banzaibetty.com

### HONOLUA BLOMFIELD

#### 2017 WORLD LONGBOARD CHAMPION!

The North Shore's Honolua Blomfield won the Taiwan Open World Longboard Championship in 3-4 foot excellent surf edging out the 2011 World Longboard Champion Lindsay Steinride of the U.S.A. in the final. It was an epic battle all day with Blomfield earning the highest score of the competition to win the event, a 18.60 out of 20 points. "I feel like I am on the top of the World and that this isn't real," said the 18 year old Blomfield after the win. The surf in Taiwan was excellent with perfect pumping long rides that really showed off the fun and excitement that is long boarding. Blomfield took out Hawaii's Crystal Walsh along the way the only other Hawaiian in the quarterfinals. In equal third was Tory Wilkerson, U.S.A. and Rachael Tilly, U.S.A. The men's event was not finished at the time of this writing but Kai Sallas from Honolulu had advanced to be the highest Hawaiian surfer!

#### WAVE POOL PRO SURFING IS HERE

The World Surf League announced that the WSL Surf Ranch Facility in Lemoore, Central California will host the world's best surfers as part of the 2018 Championship Tour (CT) calendar. The WSL's new CEO Sophie Goldschmidt made a statement saying, "we're only scratching the surface of how this technology can be applied and it is completely game-changing for the sport. The September event has the potential to be something special for both surfers and fans." The WSL tested the wave that Kelly Slater's crew designed and later sold to the WSL, for a contest format not long ago and it seemed to be a hit with the pro surfers. They are still refining the technology but the implications for fans is definitely something to think about. The schedule can be exact, the fans might be charged a fee to get in, it would have great viewing potential and the stoke of having such a perfect non-stop wave to showcase talent is a big opportunity. I'll buy a ticket now if I can! In Hawaii there are so many rules and regulations to have events and costs are getting higher and higher. This has reasonable potential to be a very cost effective event as I see it and a really fun arena setting that can be controlled easily! Sounds wonderful! There is a men's and women's CT event on the schedule at this time that seems to take the place of the Trestles, California time period. Things change sometimes so stay posted at the World Surf League website for updated schedule and information.

### KAHUKU POINT, A THOUSAND FIVE HUNDRED POUNDS CLEANER

Mahalo to Kokua Hawaii Foundation and Plastic Free Hawaii and about 30 volunteers that came to gather to clean up Kahuku Point last month. They also removed about 5000 pounds of invasive plants and planted native plants there! An insane amount of work. If you are interested in helping out the North Shore Community Land Trust hosts a community work day to restore the land at Kahuku point every 2nd Saturday of the month.

#### PRETTY LOUSY WINTER SURF SEASON SO FAR!

The long-lived jet stream blocked over the Aleutians at the Date Line. That kept WNW to NNW swell to a seasonal minimum most of November and gave way to a zonal pattern with embedded short-wave troughs. A pair of surface, winter-caliber lows tracking east hugging the Aleutians are on tap to provide overlapping, long-period, above-average NNW swell events and lots of storms heading towards California into December. This is all according to Meteorology expert Pat Caldwell from the National Weather Service. La Nina continues! That means more than average rain also for Hawaii. The northern hemisphere hints of more above average wind swell, north to east so things have not come around enough for those coveted W & NW swells. Caldwell is the guru of surf forecasting having his masters in Meteorology and a keen interest in statistics and surf forecasting. He has worked for the department of Oceanography in Hawaii, has done computer programming and worked at the environmental protection agency of Saudi Arabia! Most of all he is an avid surfer! Things do change quickly around here so lets hope they do making our forecast better. Thank you to Pat Caldwell for the update!



Honolua Blomfield wins the 2017 Longboard World Title  
Photo: WSL

## Waimea Bay View Plane

For years the iconic view plane at Waimea Bay from Kamehameha Hwy. had been blocked by a ragged wall of California grass and haole koa. The North Shore Outdoor Circle and the Sunset Beach Community Association worked together with the Department of City and County Parks and Recreation convincing DPR to trim the shrubs to guard rail height so the beautiful bay could be seen once again. In 2016 DPR did the work but said they had no plans to do it again.

The North Shore Outdoor Circle, upholding one of their missions, protecting view planes, obtained a right-of-entry permit from the City and County Parks Dept. On October 31, 2017 Oahu Tree Works sent a crew to trim the shrubs and open the view plane. A big Mahalo to Jon Perry, owner of Oahu Tree Works, for taking the job pro bono for NSOC. Not only did they do an excellent job, they have committed to trimming the area twice a year, once at the start of the surf season and once at the beginning of summer. Oahu Tree Works is happy to give back to the community on behalf of NSOC who take pride in preserving the Waimea Bay view plane for everyone to enjoy!



# FREE Family Dance

at WCA Gym (Across from Post Office)

Bring a new unwrapped toy  
to donate to North Shore News'

## Operation Toy Box

Saturday, December 9th

6:00PM - 9:00PM







Derrick Manners. Photo: Bernie Paik-Apau

## MAHALO!

Our sincere appreciation and MAHALO to the following sponsors and individuals for their support and donations to the Annual Thanksgiving Day Celebration: Sharon Carlton, Mark Koopman, Gisela Cooper, Benjamin Robinson, Kahuku Medical Center, Manu O Ke Kai, Kim & Dominick Lyons, Pawehi Binz, Randy & Mary Wood, Bob Leinau, NS Outdoor Circle, Tom Holden, Jeannie & Bill Posenecker, Abralette Kaneakua, Jon Marr, Waimea Valley, Sherry Rickey, Pineapple Tweed, Brown Bottle, Kula Almeida, The Feed Trough, Mark Hamamoto-Mohala Farms, Alea Bridge, Haleiwa Joe's, Saint Michael School

& Church, Haleiwa Elementary, Frank & Leilani Perreira, Ted's Bakery, Pastor Mike Stangel, Waialua Bakery, 7-Eleven-Haleiwa, Malama Market, Sharon Pascual, Matt Verdadero, Senator Gil Riviera, Rep. Sean Quinlan, Dole, Institute of Human Services, Waialua High Project Grad 2018, Marsha Taylor & Waialua High Culinary Class, Kumu Hula Kuu'ipo Garrido-Na Lei Nani O Waialua, Kumu Hula Keith Awai- Halau Kawaipu'ilani, Hawaii Food Bank and the many volunteers. Mahalo to the individuals who left turkeys at the NSN office.





# **\*\*LIMITED TIME SPECIAL NEW AUTO LOAN 2.95% \*APR**



## **WAIALUA FEDERAL CREDIT UNION**

67-292 Goodale Ave A2 • Waialua HI 96791

(808) 637-5980 • [www.waialuafcu.com](http://www.waialuafcu.com)

\*\* Limited Time Special - Now through December 31, 2017. Up to 72 months.

## **COME IN OR APPLY ONLINE**

\* Annual Percentage Rate

# Bulletin Board

Being  
YOU

LAURA CHO-STUTLER, PSYD  
LICENSED CLINICAL PSYCHOLOGIST

66-935 KAUONAHUA RD  
SUITE 103  
WAIALUA, HI 96791

808.387.6764  
[WWW.BEINGYOUHAWAII.COM](http://WWW.BEINGYOUHAWAII.COM)  
[DRCHOSTUTLER@GMAIL.COM](mailto:DRCHOSTUTLER@GMAIL.COM)

## **Waialua Bakery**

66-200 Kamehameha Hwy  
Hale Iwa, Hawaii 96712

808-341-2838

Open 10am - 5pm  
CLOSED SUNDAYS

Homemade sandwiches, smoothies, cookies and more.

\*[www.waialuabakery.com](http://www.waialuabakery.com) \*[www.facebook.com/waialuabakeryjuiceba](https://www.facebook.com/waialuabakeryjuiceba)  
\*[waialuabakery@gmail.com](mailto:waialuabakery@gmail.com)

## **The Lawn Ranger-**

*We put the law back into your lawn,  
no yard too hard,  
no lawn too far gone...*

**Trees, hedges, hauling,  
multi acre properties.**

Fully insured, 25 years experience.

**258-6439**

## **SUNSET AUTO SERVICE, INC.**

- Auto air conditioning specialist
  - Auto engine maintenance
  - Safety inspection station
- Walking distance to Wahiawa DMV

Call for appointment  
**622-5510**

**Matt Verdadero**  
207 N. Cane St., #1 Wahiawa





# Bulletin Board

**CELESTIAL**  
Natural Foods

Featuring the largest selection of certified organic produce on the North Shore.  
No panic...ours is organic.  
Open 7 days.  
Mon.-Sat. 9am-7pm.  
Sun. 9am-5pm

66-445 Kam. Hwy  
Haleiwa, Hawaii 96712  
Next to the Post Office  
808-637-6729 • 808-637-1922 fax



**DR. PORTER TURNBULL**  
Chiropractic Orthopedist  
(808) 638-8740  
Appointments available Mon.-Sat.  
(evenings by appointment)

- Industrial accidents & auto injuries
- Sports injuries • Spinal care
- Safe, Effective, and Gentle

## N-C PLUMBING & SUPPLY

Cont. Lic. No. C-8913



- RESIDENTIAL & COMMERCIAL SALES & SERVICE
- CONTRACTING & DESIGN • HOME PLUMBING SERVICE
- PLUMBING FIXTURES, HEATERS • FREE ESTIMATES

Nestor P. Calilao (Owner)  
P.O. Box 769  
Waialua, HI 96791

Bus: 637-8662  
Res: 638-5157  
Cellular: 372-8718



**COWPER**  
CONSTRUCTION

LIC. #AC 18275

GENERAL ENGINEERING CONTRACTOR

Full Service Sitework  
Contractor

Septic Systems & Tanks  
Since 1978

Michael Cowper 638-7200  
cowperhawaii.com



**ASIA PACIFIC INTERNATIONAL SCHOOL**

SERVING FAMILIES OF THE NORTH SHORE & WINDWARD OAHU

**NOW ENROLLING  
K-12 STUDENTS**

STUDENT CENTERED, PASSION-BASED, EXPERIENTIAL EDUCATION  
Kipona Scholarship Participating School



HAIS Member

Schedule a Visit: (808) 670-1900  
apishawaii.org



WASC Accredited



**HALEIWA, HAWAII**

Celebrating 40+ years of Professional Photo Services  
and Historic Images to the Community.  
search: northshorephotohawaii.com

## Munden Design & Build

Lic.#BC19632

Design • Plans • Permits • Construction  
Additions & New Residences

**808 391-8616**

*Providing quality work since 1978*

**PARADISE**

"IF YOU BUILD IT, WE WILL PLUMB"

**PLUMBING**

New Construction, Repair, Remodels

Dale Christensen C-29856 (808) 368-1473

New Construction • Drain Cleaning  
• Line Locating • Copper • Galvanize

**Got Leaky? Call Greekz!**

**372-1820**  
**Greekz Plumbing**  
#C-32939  
**Plumbing Service & Repair**

## Greekz Plumbing

License# C-32939  
Phone 372-1820

School of Champions

Established 1966

*International Karate Federation*



**IKF Waialua Dojo**  
Waialua Elementary School

Beginner classes - ages 5 & up  
Mon & Wed 5:00 - 6:00 pm

Intermediate classes  
Mon & Wed 6:00 - 7:30 pm

Call 780-5457 or email: [wvbinz.bb@gmail.com](mailto:wvbinz.bb@gmail.com)

# North Shore News



# 2018 Schedule

## PUBLICATION DATE

January 17  
January 31  
February 14  
February 28  
March 14  
March 28  
April 11  
April 25  
May 9  
May 23  
June 6  
June 20  
July 4  
July 18  
August 1  
August 15  
August 29  
September 12  
September 26  
October 10  
October 24  
November 7  
November 21  
December 5  
December 19

## EDITION

#1  
#2  
#3  
#4  
#5  
#6  
#7  
#8  
#9  
#10  
#11  
#12  
#13  
#14  
#15  
#16  
#17  
#18  
#19  
#20  
#21  
#22  
#23  
#24  
#25

## DEADLINE DATE

January 5  
January 19  
February 2  
February 16  
March 2  
March 16  
March 30  
April 13  
April 27  
May 11  
May 25  
June 8  
June 22  
July 6  
July 20  
August 3  
August 17  
August 31  
September 14  
September 28  
October 12  
October 26  
November 9  
November 23  
December 7

**Direct-Mailed to Every Home**

**MOKULEIA · WAIALUA · HALE'IWA · KAHUKU · LAIE**

**Every Other Wednesday**

**12,000 copies**

"The North Shore's most popular publication" since 1970  
(808) 637-3138 · NShoreNews@aol.com · NSN4Linda@aol.com  
www.northshorenews.com





## VETERANS ADMINISTRATION OPENS EMERGENCY ROOMS TO "TO BAD PAPER" VETS

VETERANS ADMINISTRATION (V.A.) NOW OFFERS VETERANS WITH "OTHER -THAN-HONORABLE" DISCHARGES CARE FOR "A MENTAL HEALTH EMERGENCY" FOR UP TO 90 DAYS.

ADDITIONALLY, VETERANS CRISIS STAFF WILL SEND A CONSUL TO THE LOCAL V.A. SUICIDE PREVENTION COORDINATOR FOR FURTHER SERVICES AS NEEDED.

FINALLY, V.A. WILL DETERMINE IF THE MENTAL HEALTH CONDITION IS A RESULT OF A SERVICE-RELATED INJURY, MAKING VETERANS ELIGIBLE FOR ONGOING COVERAGE. CONTACT VA 1-800-273-8255 OPTION 1 AND OR WWW.VETERANSCRISISLINE.NET

## Hawaiian Electric Companies offer 'Ohana Energy Gift Program for holidays

*Convenient option for helping friends, family pay electric bills*

This holiday season, consider giving family members and friends – or anyone in need – a payment toward their electric bills by using the 'Ohana Energy Gift Program offered by Hawaiian Electric, Maui Electric and Hawai'i Electric Light.

The 'Ohana Energy Gift is offered year-round as a practical way to help someone in need, but is an especially thoughtful gesture during the holidays.

The process is simple: Print out and complete the 'Ohana Energy Gift Form and mail the completed form along with your check, cashier's check or money order payable to Hawaiian Electric, Maui Electric or Hawai'i Electric Light.

The printable gift form and the address where the form and payment should be sent can be found at Hawaiian Electric 'Ohana Energy Gift Program; Maui Electric 'Ohana Energy Gift Program; or Hawai'i Electric Light 'Ohana Energy Gift Program. The webpages also list drop-off locations for each utility.

Once received, your gift will be processed within two business days unless otherwise specified. Please note that the 'Ohana Energy Gifts are not tax-deductible donations. You will receive an acknowledgement letter once your designated recipient's account information is verified and the gift amount has been applied.

If you designate a recipient, that recipient also will receive a notification letter once the gift amount has been applied. Anonymous donations are also accepted.

For more information, email: [creditsectionprograms@hawaiielectric.com](mailto:creditsectionprograms@hawaiielectric.com); [mecopayproc@mauielectric.com](mailto:mecopayproc@mauielectric.com); or [helcopayproc@hawaiielectriclight.com](mailto:helcopayproc@hawaiielectriclight.com).



## OFF da Island in Japan

The Teves Family (Neil, Myra and Kristen) having fun at Universal Studios in Japan.



The North Shore News is published every other Wednesday and mailed free of charge to all North Shore homes and businesses. Extra copies may be obtained at our office.

**PRESS RELEASE POLICY:** Submit press releases in person, mail or email to Editor, North Shore News, 66-437 Kam. Hwy., Suite 210, Haleiwa, HI 96712. Please type your releases and keep them shorter than 200 words unless they are of an unusual news interest. Releases should be viable news stories and are published on a **space available basis only**, with priority given to those received in our office first. You may attach photos. We are not responsible for the return of any photos. All materials are submitted at owner's risk. We reserve the right to edit and/or refuse all submissions including advertising.

**EDITORIAL POLICY:** We welcome articles and letters from our readers. Letters to the Editor are published on a space available basis only and preference is given to shortness of length, and quality of content. We prefer to run not more than one letter, per person, per 6 month period. Letters subject to edit.

Views expressed by our contributing writers and advertisers do not necessarily reflect the view of the management and staff of the North Shore News. All rights reserved. Reproduction in whole or part without permission is prohibited. © 2017.

#### Editor & Classifieds

Linda Seyler

#### Typography

Downtown General Store

#### Contributing Writers

Tom Jacobs

Betty Depolito

Naty Hopewell

City Councilman Ernie Martin

State Representative Lauren Matsumoto

Senator Gil Riviere

Malia K. Evans

Blake McElhenry

#### Photography

Banzai Productions



Please recycle this newspaper.

# CLASSIFIEDS

## SERVICES

### SHORE ELECTRICAL SERVICE

New Const-Remodels  
638-0049 / Lic#C20777

### Computer Problems?

I can fix any MAC or PC.  
Chris 371-3089

### Andres Plumbing

All your plumbing needs  
808-256-7337 Lic#C24500

### North Shore Pumping

Septic and Cesspool Services  
Clifford 638-0900 • 291-5099

### Carpentry & Painting Services

Repairs/Remodeling,  
Termite Rot, Doors, Cabinets,  
Countertops, etc.  
Reasonable Rates 271-6584

### Green Gypsy Thrift Shop

Waiialua—(808) 366-4000  
Next to Paalaa Kai Bakery

### Dog/Cat Nail Trimming

At your home—only \$20.00  
Call 637-5395

### Cleaning Services

Are you too tired to clean when you get home from a busy day? Let me help you! Haleiwa, Waiialua, Waimea & Sunset areas, 4-5 hrs weekly or biweekly. Will do light laundry if needed. Clean, honest, reliable and a caring person.  
Cell (717) 793-1721

### North Shore

#### Pet Nanny

Professional pet sitting,  
Walking, training etc...

Call Kathryn  
808-489-3645

### Life Extension

Stay Healthy, Live Better  
Premium Supplements  
&

### Suzanne Organics

Organic Cosmetics and  
Body Care-20% off Retail  
healthylivesnaturally@  
gmail.com

### Paumalu Electric Inc.

C 18074

Residential & Commercial  
New Installation & Repairs  
Renovations. Remodels  
Electric Meter Replacements

Dave Hancock 638-9054

### Hawaii Tree Co.

Trimming & Removal  
Professional-Reliable

Free Estimates  
462-2749

### North Shore Car Rentals

Low cost rental cars.  
Rates are low by providing  
slightly older cars with a  
"local" vibe to them, don't  
be fooled. All vehicles are  
well maintained and safety  
inspected. please visit  
northshorecarrentals.com or  
call (808) 260-4960.

### Radiant Skin Care & Waxing

Aynjul Benigno

Licensed Esthetician

Call or Text 808-222-8124

radiant skincareandwaxing.com

66-935 Kaukonahua Rd.,  
Waiialua

### Massage Therapy

Specializing in Swedish  
relaxation, Sports Massage  
Deep Tissue—Gift Certificates  
25 yrs licensed experience  
MAT 8865  
Call Allen 638-0346

### Why Knott Florist and Lei Stand

Now Open

Lei, Arrangements, Bouquets,  
Corsages, Orchids, Succulents,  
Tropical and more.  
Waiialua Shopping Center  
808-637-9380

## BIKRAM YOGA

### Dawn Patrol

### 6AM CLASSES

Mondays & Wednesdays

**637-5700**

## HARVEY'S TOWING LLC

24 hr Towing Service  
Lockouts, Jumpstarts &  
Recovery. Specializing in  
opening locked car doors.  
Call anytime 478-0333

### Your Clean Home

Vacation/Residential

Home Cleaning

Affordable • Reliable

• Green Cleaning

For Free Estimate

Call 364-6089

## BOBBY'S BODIES

Tuesday evenings at 5:00 p.m.

• Body Toning

• Cardio Pump/Fat Burner

For more info: call Bobby, owner of  
BOBBY'S BODIES at 637-4150

## ANGELS PLUMBING

Repairs  
Remodeling  
Renovation

**638-7878**

Lic. #C12004



## Aloha Computer

PC/MAC Repair/Virus Removal  
Fax/Copy/Internet Access  
Located next to Paalaa Kai Bakery  
Open M-S, 10-4.

**372-2667 or 237-4558**



Like us on Facebook:  
[Facebook.com/NSNewsHaleiwa](https://www.facebook.com/NSNewsHaleiwa)

## HOW TO CONTACT THE NORTH SHORE NEWS

Letters to the Editor, and other items submitted for publication consideration may be sent to us via:

MAIL: 66-437 Kamehameha Hwy., Suite 210, Hale'iwa, HI 96712

E-MAIL: [NShoreNews@aol.com](mailto:NShoreNews@aol.com)

PHONE: (808) 637-3138

Office Hours: Monday – Friday 10 a.m.-3:30 p.m.

[www.northshorenews.com](http://www.northshorenews.com)



# CLASSIFIED ADS

**Next Issue - Dec. 20, 2017**

**Deadline Date - Dec. 8, 2017**

## BUSINESS SERVICES CENTER

Fast & Convenient Copy, Fax, Scan,  
Computer/Internet, Laminate, & More



**Across from  
the Haleiwa  
Post Office**

**637-4558 • gonorthshore.org  
#gonorthshore**

## FREE ADS

Garage & Yard Sales,  
Reunions, Lost & Found.  
Email ad to:  
NShoreNews@aol.com

## GERMAN CAR SERVICE

Professional-Qualified  
Technician  
Call Gary  
637-6800

## Classified Ad Rates

3 lines (min.) \$18.89  
4 lines \$25.13  
5 lines \$32.45  
1" Box Ad \$41.88

(27 characters in each line)

Include your contact information.

*\*Ads can be dropped off in mail slot,  
mailed, or emailed. Pay by check  
payable to: North Shore News or  
credit card by phone order.*

We reserve the right to refuse any  
advertisement with a full refund.

North Shore News • 66-437 Kam. Hwy.,  
Suite 210, Haleiwa, HI 96712

• (808) 637-3138 • NShoreNews@aol.com

**Marianne  
Abrigo, Properties**

Specializing in -  
North Shore  
Real Estate

Ask for our list of avail-  
able properties and/or a  
free market analysis.

**Marianne M. Abrigo**  
"Realtor since 1974"

**Office 637-3511**  
**Fax 637-0777**  
**Email mabrigo222@aol.com**

## HELP WANTED

Housekeeper  
Beachfront Estate  
16/hrs per week  
637-0808

## NORTH SHORE SURF SHOP ALOHA AMBASSADORS NEEDED!

NOW HIRING! Sales Staff and  
Manager Positions-Hard Working  
and Friendly-Japanese, Korean,  
Chinese Speakers are a PLUS-  
COME JOIN OUR OHANA!  
CALL 637-5002 NOW!

Apply in Store  
66-150 Kam Hwy, Haleiwa.

## Retail Sales Surf & Sea

Hawaii's Ocean Sports Headquarters  
is always looking for hard working,  
energetic people to become a part  
of our sales team. Good pay, bonus,  
benefits. Japanese speaking a plus.  
Ocean sports experience and  
dive instructor wanted. Please  
contact surfnsea@surfnsea.  
com for details.

Apply in person daily 9am-7pm  
62-595 Kam. Hwy., Haleiwa

## Matsumoto Shave Ice

Now Hiring!

Apply in person daily  
9a-4p  
808-637-4827

**F/T, P/T**  
**Stock and cleaning at**  
**Paalaa Kai Market**  
**637-9182**

## FOR SALE

Crib/daybed w/mattress,  
good condition  
text 780-8037  
if you want to see pic.

**For Advertising Rates**  
**Call 637-3138 or go to**  
**www.northshorenews.com**

## FOR RENT

Kam Hwy Store Front  
1500 sq. ft. \$3000/mo  
551-7227

2bd/1bath unfurnished  
house in Hauula near  
beach. Mo. to mo. lease  
\$1650/mo.

Utilities separate.  
Call 808-447-6967

**TABLES & CHAIRS**  
**780-8037**

## MISCELLANEOUS

Seeking rental for one person  
plus cat. 388-5336

The North Shore Food Bank  
will be closed on December 27,  
2017, January 3 & January 10, 2018.

## Operation: Toy Box

Santa needs your help to  
provide toys for our  
disadvantaged keiki  
and teens in our  
community this Christmas.  
Drop off unwrapped gifts  
at the North Shore News  
office. M-F, 10am-4pm  
For information call  
637-3138

Would you like to get the  
North Shore News via  
email in color! Just send  
your email address to us  
at: NShoreNews@aol.com  
and you get the NSN online,  
free every two weeks!

Parkinson's Group Meeting  
Group meets at the Waiialua  
United Church of Christ on the  
1st Saturday of every month.  
Friends & Family Welcome  
Next meeting January 6 @10am  
Abel 253-9541

**NOAA Stranded, Entangled**  
**Injured Sea Turtles**  
**(808) 725-5730**

## OFF da ISLAND

Are you leaving Oahu on vaca-  
tion or business? Do you live on a  
neighbor island, the mainland or  
foreign country and subscribe to  
the North Shore News? Try send  
us a photo of someone in front  
of a sign or landmark holding a  
copy of the NSN. Email your photo  
along with the person or persons'  
name, community of residence,  
telephone number and photo lo-  
cation to: NShoreNews@aol.com.

## Sunset Beach Elementary HOLIDAY CRAFT FAIR

**Saturday,  
December 9, 2017  
9am-3pm**

## BRRRR

It's been cold lately!  
Perhaps you have an extra  
blanket or two, used or  
new to donate to our  
homeless neighbors. Drop  
off blankets at the North  
Shore News office.

**A Warm Mahalo**  
**637-3138**

## North Shore Food Bank

Food bag distribution  
Wednesdays at Haleiwa  
Gym across from  
Post Office  
10am-12pm

## OAHU SPCA

Pet Adoption at  
Hawaii Polo  
Sunday, December 9, 2017  
11am - 2pm  
Bring a toy for  
Operation: Toy Box

The 4th grade class at Aviston  
Elementary would like to learn  
about Hawaii. The kids would  
like to receive postcards, maps,  
souvenirs and information about  
our state: 4th Grade Aviston  
Elementary, 350 South Hull Street  
Aviston, Illinois 62216



Like the North Shore Food  
Bank on Facebook:  
Facebook.com/  
Haleiwa Food Bank

FREE COMMUNITY EVENT

# SUN SET Fest



LIVE MUSIC • FOOD TRUCKS • TALK STORY

DECEMBER 9TH, 2017 4pm

59-578 KAMEHAMEHA HWY, HALEIWA