



“E Ala Na Moku Kai Liloloa”

In This Issue:
Volunteers Atop Mt. Kaala
Page 5
North Shore Surfing Wireless
Page 15
Kalo Collection
at Waimea Valley
Page 16



NORTH SHORE NEWS October 25, 2017 **VOLUME 34, NUMBER 20**



Photo: WSL

Local Girls One and Two at Turtle Bay Longboard Pro

The North Shore can be proud of two wahine that placed one and two in the WSL Longboard Pro event at Turtle Bay Resort. The final day highlighted a blend of progressive maneuvers and classic

nose riding. Honolua Blomfield cross stepped and hung five to take the win. Blomfield strengthened her bid into the World Longboard Championships next year at Papua New Guinea. Bloomfield is now

first in our region. Her friend Kirra Seale found two good scoring waves and ended up in second. Seale has had some great success and will now compete on the World tour and should qualify to go to the World Championship event!

PRE-SORTED
 STANDARD
 U.S. POSTAGE PAID
 Honolulu, Hawaii
 Permit No. 1479

66-437 Kamehameha Hwy., Suite 210
 Haleiwa, HI 96712

PROUDLY PUBLISHED ON THE
North Shore of Oahu
 Home of
The Red Bull Queen
of the Bay Championship



OFF da Island in Bozeman, Montana - Jeff and Anita Peterson from Peterson Upland Farms in Wa-hiawa traveled to Bozeman, Montana. They are pictured here at Lone Peak Mountain (11,166 ft elevation)...and they still cannot see Hawaii!

SAVE THE DATE

Friday, December 8, 6pm
Annual Haleiwa Town Christmas Parade

Wednesday, December 13, 6 p.m.
North Shore Chamber of Commerce
Christmas Party & Auction, Waimea Valley

The Haléiwa Family Dental Center, Ltd.



now offering the
ORAL B GENIUS TOOTHBRUSH
at a **BLOWOUT PRICE**

- \$77 after \$20 rebate—your price is lower than our cost
- Proven to be the best toothbrush
- Bluetooth capable with your smart phone
- Package includes: Genius toothbrush, 4 brush heads, toothpaste, mouthwash & floss
- Offered at this price to promote dental health. Do not have to be our patient to take advantage of this incredible deal.
- Children's bundle available for \$37

Provided by Dr. Todd Okazaki and Staff

Conveniently located behind First Hawaiian Bank in
Historic Haléiwa Town
Call 637-9652 for information

66-037 Kam. Hwy., Ste. 3
Haleiwa, next to Growing Keiki

Saccoccio & Lopez

ATTORNEYS AT LAW
Serving Haleiwa since 1984

Bankruptcy
Personal Injury • Criminal Law
Landlord/Tenant
Traffic Offenses • DUI

Family Law
Adoption • Custody • Divorce
Paternity • Guardianship
Deeds, and Wills

Notary Public

637-7611

VISA/MC Accepted



Paul & Nita



Book Your Holiday Event at Waimea Valley!

***** Book by November 1 and Receive FREE Waimea Valley Annual Family Passes for Your Employees! *****

Contact us today to learn more about our indoor/outdoor venues, in-house catering and event planning services for company holiday parties of all sizes!



6th Annual Makahiki Festival & Ke'Alohi Hula Competition

Saturday November 18 at the Upper Meadow & Amphitheatre

Celebrate Makahiki at the Valley! Annual hula competition, traditional games, live music, local vendors and artisans, 'ono food – Learn more at waimeavalley.net



Family Days at the Valley

Kama'aina Keiki Wednesdays and Lā 'Ohana Sundays (3rd Sunday Every Month)

Kama'aina keiki 12 and under enjoy free admission every Wednesday! Bring the entire family for a fun-filled day of Hawaiian activities, games, and much more for all ages



Weekly Hale'iwa Farmers' Market

Thursdays 2 - 6pm at the Pikake Pavilion

Join us every Thursday, rain or shine, at this award-winning weekly market featuring fresh produce, local vendors, arts and crafts, and live music



WAIMEA VALLEY
HI'IPAKA LLC

Botanical Gardens, Cultural Activities, & Waterfall

On the North Shore Across from Waimea Bay

Open 7 Days a Week, 9am - 5pm

Call: (808) 638-7766

WHERE HAWAII COMES ALIVE

WAIMEAVALLEY.NET

*Limited Time Special **NEW AUTO LOAN**

2.95%

****APR**

Come in or
Apply Online



WAIALUA FEDERAL CREDIT UNION

67-292 Goodale Ave A2 • Waiialua HI 96791

(808) 637-5980 • www.waiialuafcu.com



*Limited Time Special
Now through 12/31/17.
Up to 72 months.

**Annual Percentage Rate



Bluegrass Concert

The North Shore Ramblers

Sunday,

November 5, 2017

4 p.m.

Waiialua Bandstand

Come enjoy the music!

www.waiialuabandstand.com



**Department of Parks & Recreation
Waiialua District Park**

4th ANNUAL

TURKEY TROT

Obstacle course for: children, teens & adults.

*(The speediest doesn't always win—
stunts & skills to challenge the mind & luck)*

Saturday, November 4, 2017

Waiialua District Park

9:30am Registration, 10:00am

Races Start

Rain or Shine

It's a **FUN, FREE,** event for our community!

For information or to sign up as a
VOLUNTEER, please call 637-9721

Volunteers Atop Mt. Kaala

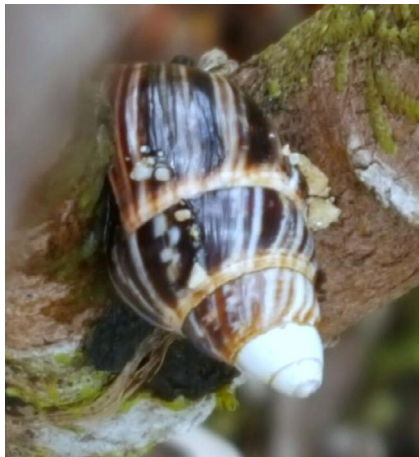
Manu Anana and friends were invited to take part in recognizing the invasive species that threaten the native plants and animals in Mt. Kaala. "Moku o Waialua skirts Mt. Kaala from Lihue to Waimea and Kaena. As we climbed the mountain you can feel the slight change in temperature as the fragrance of the forest wafted through the open windows. We stopped along a vantage point with a panoramic view of Waialua on one side and Waianae/Makaha on the other side. At the summit we made our way through stunted Ohia and Pukiawe. We saw fern, Wahine Nono Mauna and listened to the sounds of the Lapalapa as we felt the rain on our faces and inhaled the fragrance of the forest," says Manu.

Mahalo to Eric Enos of Kaala Farm, Gabrielle of Townscape, also Celeste and Kim of the Oahu Army Natural Resources Program.

If anyone is interested in volunteering at Kaala with the Oahu Army Natural Resources Program, information can be found at www.oanrp.com.



Mt. Kaala - Keith, Jennifer, Berni & Manu.



Endangered endemic snail.



Paalaa Kai Bakery
OPEN 7 DAYS

ALOHA WAIALUA TOWN



Visit us bright and early from 5:30am daily!



www.pkbsweets.com



SEAMLESS ALUMINUM & COPPER RAINGUTTERS
IN HOUSE SHEET METAL WORK

"Let us Protect your Castle"

John Manning, President

P.O. Box 84 Email: gutterking808@outlook.com
Waialua, HI 96791 Website: 808gutterking.com
Ph: (808) 621-5115 License: C-23936

Located in the Waialua Sugar Mill



**Council Chair
Emeritus
Ernie Martin**
Serving You in District 2

Oahu Needs Safe Zones, Islandwide Sit-Lie Ban

October 16 marks two years since the state issued an emergency proclamation addressing homelessness.

At the time, elected leaders promised a comprehensive, cooperative approach to addressing one of our most persistent and vexing issues.

Hawaii News Now and the Honolulu Star-Advertiser explored the problem through an increased focus on exclusive reports and critical editorials.

We were all excited. Government and the private sector had finally come together to help those who needed it most.

No one had any illusions that solutions would quickly materialize to a decades-old problem. But the news the last couple of weeks has been a sobering indictment of our efforts over these last 24 months.

First, a letter from August surfaced saying that City and County of Honolulu missed deadlines to spend \$10 million in federal housing funds and that the city returned \$2 million to the U.S. Department of Housing and Urban Development.

The loss came a year after the U.S. Inspector General's Office concluded the city spent \$15,918,909 on property acquisitions and contracts that violated federal and city guidelines governing the use of Community Development Block Grant funds.

Then came a scathing report from the City Auditor that pointed out that the "city and state lack a strategic plan for homelessness that establishes specific timelines, performance benchmarks, allocation of resources, and other quantitative objects that can measure success. Opportunities to leverage or pool resources, or build on the other's effort, are lost."

The audit questioned the sustainability of the largest city-run homeless shelter, Hale Mauiola, with per-person costs ranging between \$6,553 and \$7,889 a year. It claimed the city's Department of Community Services lacks the resources and staff to manage homeless contracts. And it revealed that the city and state both support Housing First programs but the city program costs 48 percent more.

Homeless Numbers Have Increased

Most recently, we watched as the state shuttered Kakaako Waterfront Park because at least 180 homeless individuals built a small city fronting the Pacific Ocean, rendering the area unsafe for public use. This decision came a little less than a year after an

expensive push to clear a large homeless encampment out of Kakaako.

The encampment, which stole power and water, is not unlike those we see in Waianae, Keehi Lagoon, under Nimitz Highway, on the slopes of Diamond Head, around Lake Wilson and in bushes, brush and on streets all over Oahu.

After seven emergency proclamations and two years of talk about how hard we are working on homelessness, the results so far are unacceptable.

But we have to keep trying.

The homeless population on Oahu has increased every year since 2009 and we are sheltering 466 fewer individuals than we were in 2013.

Possible Legislative Solutions

I introduced a package of proposals, Bill 87, Bill 88 and Resolution 17-277. All three proposals have been referred to the Executive Matters and Legal Affairs Committee.

The measures would expand sit-lie legislation islandwide while creating safe zones for homeless individuals around Oahu, like Camp Kikaha on Hawaii Island. Here, people can safely camp out and receive services while trying to secure permanent housing.

The city has invested more than \$65 million in initiatives designed to reduce homelessness since the first sit-lie ban was adopted in 2014. Through my personal request, the City Council has appropriated \$23 million in the last two years for the Community Revitalization Initiative that can be used to establish safe zones.

It is time to come together, again, and develop a comprehensive plan to reduce our homeless population.

Setting up sit-lie zones only in certain areas pushes the problem into other neighborhoods. It is a fact that we are running out of places for the homeless to go.

The public just saw their elected representatives come together and generate \$2.4 billion in new tax revenue for our rail transit system in a matter of months.

So far, the needs of the poor and homeless have failed to focus and keep the attention of the private sector and government the way a train connecting centers of commerce has.

It is time to come together, again, and develop a comprehensive plan to reduce our homeless population.






**Representative
Lauren
Matsumoto**
Serving You in District 45

Aloha Friends, Family, and Neighbors!
This year has flown by, Halloween is upon us and the holidays are just around the corner. As a kid I loved the magic of Halloween, Trick-or-treating, classroom parties, and visits to haunted houses.

To help ensure adults and children have a safe holiday, the American Academy of Pediatrics has compiled a list of Halloween Safety Tips. A parent or responsible adult should always accompany young children on the neighborhood rounds. If older children are going alone, plan and review the route that is acceptable to you. Agree on a specific time when children should return home. Only go to homes with the porch light on and never enter a home or car for a treat. Instruct your children to travel only in familiar, well-lit areas and avoid trick-or-treating alone. Children and adults are reminded to put electronic devices away and keep an eye out when crossing the street. If you plan on being on the road during prime trick-or treat hours, watch for children walking in the roadways, enter and exit driveways carefully, and watch for children in dark clothing. Remember that all costumes, wigs, and accessories should be fire-resistant. If children go out after dark, fasten reflective tape to their costumes and bags to make sure they are visible. When buying Halloween makeup, make sure it is nontoxic and remove all the makeup before children go to bed to prevent irritation.

As always, please feel free to contact me if you have questions or concerns about any happenings in our community. Call me at (808) 586-9490, email RepMatsumoto@Capitol.Hawaii.gov, or visit Rep-Matsumoto.com.



**NORTH SHORE
PHOTOGRAPHY**

HALEIWA, HAWAII

Celebrating 40+ years of Professional Photo Services and Historic Images to the Community.
search: northshorephotohawaii.com

Hawaiian Electric Arbor Day Tree Giveaway

Get a FREE plant • Shade your home • Help the environment



Saturday, 9 a.m., November 4, 2017
Waimea Valley
59-864 Kamehameha Highway

Select a native plant, a flowering shrub or a popular fruit tree!
Choose one per family, while supplies last.

Experts will be onsite to help you select the right plant for your needs.

Statewide Arbor Day activities: www.ArborDayHawaii.org




"Da Best"

Join our daBest VIP club today!

**SUPER SPECIAL BONUS FOR
NOVEMBER 2017 NEW MEMBERS!**

Dee-licious! Ono!

*Become a NEW
member in November
and receive a coupon
for a FREE SNOW
PUFFY!*



Must be a new member to qualify, existing members do not qualify for the bonus Snow Puffy coupon. One Snow Puffy coupon per new member in November 2017. Free Snow Puffy coupon must be presented with your daBest VIP card and expires on December 31, 2017. Snow Puffy subject to availability at Paalaa Kai Bakery.

SIGNUP @ www.pkbsweets.com

*FIRST PUBLIC SHOWING OF NEW AND ORIGINAL
PAINTINGS AND SCULPTURES!*

ART SHOW & AUCTION

DECEMBER 1-2, Friday-Saturday

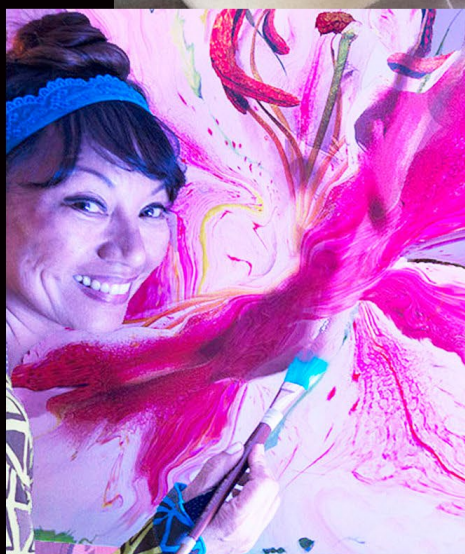
HALEIWA BEACH HOUSE RESTAURANT

Portion of Sales Proceeds will go to

WAIALUA COMMUNITY ASSOCIATION



RUBEN AIRA JR.



LENI ACOSTA KNIGHT

SHARE YOUR JOY OF THE HOLIDAYS WITH
OPERATION: TOY BOX

Sponsored by North Shore News

DONATIONS WILL BE ACCEPTED AT THE
BEACH HOUSE RESTAURANT
STARTING ON NOVEMBER 1st

For More Information, please call (808) 637-3435



Ask the Doctor

Jason Hughes

Chief Medical Officer
Kahuku Medical Center

Q: Should I worry about concussions?

Yes. There's been extensive news coverage about concussions, especially in athletes, but most concussions actually occur off the playing field with car or bike accidents and falls being the most common.

The hallmark symptoms are confusion and memory loss. This can happen immediately or several minutes after the head injury occurs. Often people won't remember how they got hurt or the events leading up to, or right after, the injury. Mild brain injury will often lead to slow responses or speech, feeling emotional, headache and difficulty focusing.

Symptoms that require immediate attention include difficulty staying awake, worsening headache, persistent confusion, unsteadiness, vomiting and weakness or numbness of any part of the body.

Doctors will perform a physical exam and focus on testing balance, coordination, and brain function. Sometimes a CT scan or MRI is done to rule out bleeding or other problems with the brain. Kahuku Medical Center is well equipped to deal with concussions.

Physical and mental rest is key. If mental activities don't trigger symptoms, you can resume them gradually and stop if any symptoms occur. Limit strenuous physical activity until symptoms are gone and you have a physician's approval.

Avoiding re-injury is vital. Evidence shows that people are more likely to have another concussion if they've had one before. Repeated concussions can result in lasting brain damage, even if they happen months or years apart.

Several things can help avoid concussions such as proper safety gear for sports, bike riding or motor cross, etc. Childproofing your home and properly using car seats and seat belts go a long way to preventing head trauma. See our web site for more details: kmc-hi.org

Do you have a medical question?
Email askthedoctor@kmc-hi.org

Dental health announcement from the Haleiwa Family Dental Center, Ltd.

Well, it's that time of the year. Most dental insurance have a maximum annual dollar limit they will pay each year. The rollover date is usually January 1st. Improve your health while saving money by setting up an exam and cleaning appointment today. Please do not wait until December as often there are not enough appointments to accommodate everyone. Waiting until January may result in more personal expense. Call your dental health provider to make the most of your dental benefits.

Sincerely,
Todd R Okazaki, D.D.S.



NOW HIRING

DIYers and friendly folks

**APPLY INSTORE OR ONLINE AT
HAWAIIACEHARDWARE.COM**

We are looking for quick learners, hands-on problem solvers who love helping our neighbors. If you like a fast paced environment and if you can multitask we like you to join our team.

Immediate openings for the following:

- Assistant Store Manager (FT)
- Sales Associates (FT & PT)
- Backroom (Receiving Coordinator) (FT)
- Lumberyard Associate (FT)

**Come join our team
today!**

Flexible Hours, 401K, Medical, Dental, Employee Discount, Paid Holidays, Paid time off and much more.

Learn something new
everyday including
lifelong skills to tackle
your own projects at
home.



Haleiwa Location

66-134 Kamehameha Highway
Ph# 622-7002

Mon-Sat 7am-7pm
Sun 7:30am-5:30pm



North Shore Chamber of Commerce News

Member Spotlight: Barnfield's Raging Isle

What's the formula for running a business in Haleiwa over the long run? A passion for your merchandise, savvy management skills, vision and willingness to meet the changing needs of the community. That's the combination Bill and Wendy Barnfield have relied on to operate Barnfield's Raging Isle in the North Shore Marketplace location since 1988.

The vision for the store started back in the early 1970s. Bill's surfing at Pipeline had brought him notoriety, helping drive his surfboard designs into international popularity. He needed a large manufacturing space to accommodate the growth. There was an old junk yard in downtown Haleiwa on which developer Howard Green had already made plans; and Bill figured it would also fit his futuristic plans for a state of the art, fully legal, surfboard factory. Howard and Bill then began working together, creating Bill's space, the first building in what would eventually become The North Shore Marketplace.

As Haleiwa Town's business model shifted more towards retailing, Wendy expanded their clothing merchandise while Bill developed their bicycle business. Bill reflects, "I really enjoyed cycling...I got deeply involved in downhill racing and even won a Masters World Championship in 2000...but once the fad of mountain biking began to wane after 20 years, it was time to move on...luckily woman's surfing was exploding so we enlarged our woman's department."

Today, the store sells a huge selection of women's and men's apparel, including footwear, eyewear, and a unique selection of antique Hawaiiiana collectibles and jewelry. Raging Isle carries a wide variety of water sports equipment, skateboards and accessories.

"God has been so gracious to bless us over all these years, allowing us to have the means to make an income and also provide employment to hundreds of people in our community over the years. We have people that have worked for us for decades," says Wendy, who manages the retail and does most of the buying.

Both Wendy and Bill admit that developing Raging Isle hasn't been easy. They agree that a family-owned business is often all-consuming, and that as Haleiwa has grown, the infrastructure and employment pool have rarely kept pace. Many businesses catering to the surf scene have also emerged and been extremely competitive. In spite of these challenges, however, Raging Isle has survived three

decades and remains rock solid with high expectations for the future. "We are deeply appreciative of our great staff and Howard Green for working with us to help bring our visions to pass," says Bill.

Not only has the business been longstanding, so has their 44-year marriage. Before they started Raging Isle, Wendy ran the tennis shop at the Kuilima Hotel (now Turtle Bay Resort). "She's always been a big tennis buff and she continues to play every day...and somehow, she also found the wherewithal to be super mom, raising our two daughters into adulthood," says Bill. Daughter Angela helps in the store doing merchandising and buying, and her sister, Roslyn lives in Europe, working for Apple Inc.

Today, the business is primarily retail, but hidden away in the back of the building, there still exists "ProGlass - The Surfboard Factory," Bill's original business. Twenty-five years ago, the factory produced 100 or more boards per week and employed a bevy of skilled craftsmen. Today, Bill is a one-man operation, hand crafting individual boards like he did decades ago when he started.

Hanging in the office, there's a legendary Surfer Magazine Poster from those older surf days called "Late Take Off." The poster shows Bill dropping down the face of one of those fearsome waves in a stance that shows the daring determination to conquer challenges and savor the moment. And that's exactly how he and Wendy have successfully faced the challenge of running their business on the North Shore year after year.

Raging Isle is located at 66-250 Kamehameha Highway in downtown Haleiwa; telephone 808-637-7797; email surf@ragingisle.com. Open hours are 10 am to 6:30 pm, seven days a week.



The Barnfield Family

**North Shore Chamber of Commerce
General Membership Meeting
Thursday, October 26, 8 a.m.
Haleiwa Joe's**

THE NORTH SHORE, A WAY OF LIFE



**ADVANTAGE
REALTY
NORTH SHORE**



YOUR NORTH SHORE REAL ESTATE RESOURCE

Voted Honolulu & Hawaii's **BEST REAL ESTATE FIRM!** Let us share our local knowledge with you! Stop by our office at the Haleiwa Store Lots for a free market analysis, or call **808-637-1500**. Parking available.



KARIN MOODY-TSUTSUI
Realtor, Principle Broker, Owner, RB-19578
808-392-7410



NOEL MARCHAN
Realtor-Associate, RS-73977
808-282-0949



MEMÉ MOODY
Realtor-Associate, RS-74874
808-741-3835



MICHAEL PIEKLO
Realtor-Associate, RS-79930
808-551-6740

Photo: Ryzene Media



HALEIWA STORE LOTS | 66-111 KAMEHAMEHA HWY. UNIT #902 | HALEIWA, HI 96712 | BETTERHAWAII.COM

©2017 Better Homes and Gardens Real Estate Advantage Realty North Shore. Better Homes and Gardens® is a registered trademark of Meredith Corporation licensed to Better Homes and Gardens Real Estate LLC. Equal Opportunity Company. Equal Housing Opportunity. An Independently Owned and Operated Franchise. Better Homes and Gardens Real Estate Advantage Realty North Shore are affiliates of Better Homes and Gardens Real Estate Advantage Realty.



Auheha 'oukou, E naue mai a ho'olaule'a kākou!

This Run-Walk Event
is Hosted by
Mālama Loko Ea
Fishpond



LOKO EA Fishpond

'Ohana

FUN DAY

8K Run & Walk 2018

SAVE THE DATE!
03/18/2018
SUNDAY



COURSE INFO:

SCENIC BEACH ROUTE

Your destination begins at the Hale'iwa Beach War Memorial Statue, pass through Ali'i Beach, then to Kaiaka Bay Beach Park, head to Pua'ena Point, then over to Papa'iloa Beach and back at Hale'iwa Beach Park to the finish line.

Detailed Turn-by-Turn Route information will be updated on our Facebooks Event's Page.
<https://www.facebook.com/MalamaLokoEa/>

1-Mile Course Added!

REGISTER at: <https://flpreregister.com/>
Or contact us for a Registration Form
ALL AGES WELCOME!

Prizes awarded to Top Men/Women/Student and in 5-Age Groups

RUN OR WALK... WHATEVER YOUR FANCY!

6:45am rolling start. Packet Pickup: TBD

Early Bird Registration: Before Nov. 11, 2017
Shirt & Finishers Medal guaranteed

Standard Registration: Before Feb. 11, 2018
Shirt & Finishers Medal guaranteed

Registration Fees Before Mar. 16, 2018
Shirt not guaranteed

Stick Around after the Run/Walk,
we've got lots to enjoy for the entire 'Ohana!
OPEN TO THE PUBLIC – ALL WELCOME!
Festivities and Awards begin at 8:30 a.m.

Lucky # Giveaways

Must be present to win! Gift Cards, Swag, Merchandise

Ono Food Booths

(Poke Bowls, Tacos & Plate Lunch)

Shave Ice, Poi Mochi, Snacks, Specialty Iced Teas &
Lemonade Drinks, Merchandise Booths & Lots MORE!

LIVE ENTERTAINMENT (TBD)

For Additional Info or to Volunteer, Contact

Race Director/Event Coordinator:

Doreen Rabago, #478-7667

Email: fishpond96712@gmail.com.

Event Coordinator: Rowena Estores #383-5754

Email: rowena@lokoea.org

Mahalo Supporters & Sponsors



Steve's
Gardening
Service



BioAstin
Hawaii

PACIFIC SPORT
EVENTS & TIMING
WE GET YOU RESULTS.



WANANA PAOA

Proceeds from this event benefit
our Educational programs and the
ongoing Restoration Projects at
Mālama Loko Ea Fishpond

We are a 501c3 Non-Profit Organization

A portion of our funds support
WANANA PAOA

Talking Story with Tom Jacobs

What's Up With Shark's Cove? Cully's Corner Makes a Change.

Food trucks. Who needs 'em, right? Once upon a time in a galaxy far, far away it was cute to eat garlic shrimp at Giovanni's. Today there's a food truck every 20 feet on the North Shore, seems like, serving everything but chocolate laulau, while the brick-and-mortar restaurants grumble because they have to fork out extra taxes while a food truck simply camps out ...

On the other hand, food trucks are vintage North Shore ... a fast, simple way to grab a great meal at a great price in an outdoor setting. And what's wrong with a guy or a family making an honest living?

... like Shark's Cove. We've all driven by that parcel next to Foodland with wall-to-wall trucks and shops and strung lights. Is that simply North Shore "country" or simple glut?

To find out, I interviewed both sides of the issue. First up were the principals for "Hana Pohaku," the name for the site. Cully Judd and his son-in-law, Andrew Yani, own Hana Pohaku. Cully has a long history in Hawaii. He is a descendant of Gerrit Judd, one of Hawaii's first missionary doctors and cabinet minister to Kamehameha III. Cully is also a solar energy pioneer in Hawaii. His company was installing solar cells on rooftops before most of us could spell "Global Warming." He is so associated with the Hana Pohaku project that it is also known by its nickname: "Cully's Corner."

Mike Hodge, a local lawyer and Hana Pohaku program manager, told me that the Special Management Area (SMA) Minor Permit for Cully's Corner has been approved by the City's Department of Planning and Permitting. This major milestone gives Hana Pohaku clear guidance and milestones in order to bring the site up to compliance.

Such as: reducing the seven food trucks and one shave ice store currently on the property to five food trucks. Hodge estimated that this will be completed soon. A drive-by shows that this seems to be accomplished. The SMA sets forth ten other conditions for approval besides food trucks: electrical work, plumbing, grading, storm-water management, proper permitting, and operating hours (7 a.m. to 9 p.m.). Trees taller than 15 feet would not be trimmed. Things like that. Mr. Hodge says that the owners intend to satisfy all SMA issues and prepare a "final plan" (in what form? Environmental impact statement? Food trucks ... how many?

Structures? Parking? Other?)

I also phoned Chet Naylor, an old friend who has run the venerable Shark's Cove Grill on the property for the past 14 years. Chet has spent a lot of effort and money bringing his eatery up to the standards of the SMA ... like completely changing out his food truck to a new "alt-mobile" one, movable on its own wheels. "It cost three thousand dollars just to move the old trailer away," Chet laments. "That's a lot of hamburgers." He's optimistic about the future, with the winter surf season coming up. And, he's optimistic about the future of Cully's Corner. "We all live on the North Shore. We want the right thing for all our neighbors."

Next, I talked to Denise Antolini, Grand-Poo-Bah for Malama Pupuokea Waimea (MPW), a community 501-C3 non-profit formed 12 years ago, apparently in response at least in part to the Shark's Cove issue. It's got a board of directors, staff of two, and hundreds of volunteers, Ms. Antolini says. MPW "basically agrees with the SMA," she then adds, "Why did it take (Hana Pohaku) so long to start correcting all these problems?" Ms. Antolini also sees problems not addressed by the SMA nor Hana Pohaku. "Enforcement structure is weak, with no accountability or reports to the community by the owners. Traffic increase isn't taken into account. The SMA is "minor" ... given the money the owners need to spend, a major SMA is appropriate, with environmental analysis and public hearings. The SMA is undervalued, ignoring the value of, for example, the food trucks and the site's waste water system. Environmental factors like drainage to the sea, litter, and waste water disposal are not addressed." However, Denise agrees that SMA compliance will be a big step forward.

So ... who's right, who's wrong? Good guy, bad guy? That's up to you, Mr. and Ms. Reader.

Meantime, how about live aloha, eh?



Save- Money & Save the Environment

Little Lamb Wool Dryer Balls
Natural organic fabric softener and static guard
Lasts for 1,000 loads
No harsh chemicals, no allergy problems
Cuts down drying time

Soap Berries
100% organic soap nuts from Nepal
Natural laundry detergent and cleanser
One bag lasts about 6 mos. (family of 5)

\$13 per item-Great for Gifts!
For more info call: 808-342-0534

Available at Green Tea Hawaii or North Shore News.
Green Tea Hawaii will be donating a portion of the proceeds to the North Shore Food Bank.



North Shore Outdoor Circle Keeping the North Shore Clean, Green, and Beautiful

by Vera Stone

On Monday evening, September 25th in Waimea Valley, the North Shore Outdoor Circle had their General Membership Meeting. We had a wonderful time, enjoying refreshments and chatting with neighbors and new members. Then Ke Nui Kitchen presented their gourmet soups and a lovely salad. When the meeting was called to order, our outgoing president, Kerry "Gidget" Germain shared a slide show of highlights from her two years as president. It sure was a busy couple of years.

Then we introduced Myles Ritchie, Program Director for The Outdoor Circle, to tell us all about the Citizen Forester Program he is spearheading. This program aims to teach us, citizens, to map trees. With the help and support of arborists and mapping specialists, volunteers learn how to ID trees, gather metrics such as height, canopy spread and diameter and input all of this data. Volunteers have mapped almost all the street trees in Kailua and are working in other areas of the island. Myles is hoping to spread the program to the North Shore.

Next, our keynote speaker - State Representative, Sean Quinlan took the floor and announced our new slate of officers.

Board Members

Our Co-Presidents will be Lea Albert and Ruth Holmberg.

1st VP ~ Rex Dubiel Shanahan

2nd VP ~ Dawn Peerson

Treasurer ~ Yvonne Alexander

Recording Secretary ~ Patricia Scanlan

Corresponding Secretary ~ Ed Shanahan

Advisor ~ Kathy Whitmire

Advisor ~ Leslie (Tinker) Blomfield

Committee Chairs

Membership Chair ~ Peggy Cutting

Newsletter/Publicity ~ Vera Stone

Beautification ~ Dawn Peerson

Signs ~ Kathy Whitmire

Historian, Tree Committee, and Events ~ Kerry "Gidget" Germain

Ke Ala Pupukeya Bike Path ~ Rex Dubiel Shanahan and Yvonne Alexander

We took some time to give out our coveted Beautification Awards to members of the community. Alan and Ann Bell and Alex Benton were in attendance to receive their awards. Paul Boonzaaier and Diane Burns were represented by their landscape architect, Jim Schmidt.

Then it was time to hear from our State Representative. Sean Quinlan. He told us a little bit about upcoming developments on the North Shore, especially with regards to Laniakea traffic problems, then he took questions from the floor. I, for one, was incredibly impressed with his articulate, honest answers to some tough questions. It was a wonderful, informative evening.

Please consider joining us as we celebrate Arbor Day with Waimea Valley for their free tree giveaway and plant sale Saturday, Nov. 4, 9:00 a.m. -1:00 p.m.



North Shore Surfing Wireless Betty Depolito - banzaibetty.com

SURF N SEA WINS PRESTIGIOUS AWARD

Surf n Sea has won an award for best surf shop by the 111-Hawaii organization associated with Japanese clientele. The Gold Shaka Award was a peoples choice type of award for Best Sports/Surf Shop voted by Japanese visitors to the shop! The awards ceremony ranks Hawaiian gourmet, souvenirs, and tours from 50 different categories using an online voting system used by fans of Hawaii in Japan, Hawaii, and the world. It was the first time that Hawaii's best was decided by Japanese nationals. This year they collected 25,000 votes between January 11 and July 10th. A big congrats to the Ohana at Surf n Sea!

RED BULL QUEEN OF THE BAY ON RED HOLDING PATTERN

The Red Bull Queen of the Bay event is on a stand by red pattern waiting for high surf warning size waves of 35-40 foot faces. Thirty of the best big wave Wahine surfers are waiting for the green light to shine on an already glowing possibility of historic proportions. Check the web site womenswaimeabaychampionship.com for the update or check on Facebook for info. Recently the competitors got together with the Big Wave Assessment Group for safety training which included CPR, risk assessment, risk management and water work practicing recuses of multiple kinds. The BWAG offers classes open to the public you can check their web site for more information. The class was great! <http://www.bwrag.org> for more info!

NORTH SHORE WAHINE SAVES THE LIFE OF 5 YEAR OLD

More proud moments for our community of professional lifeguards and cpr certified water people. Talented Jodi Kealoha who owns and operates 808Sup and is a personal trainer, model and more, saved the life recently of a 5 year old boy who was pulled out of the water lifeless.

"I ran and told people call 911 and began CPR. After a few cycles of compression breathing he began to breathe." She explained. "I put him in recovery position and his eyes slowing came back to life. EMS came and they said he would recover!" She was shaken by the incident as she has a young son, Koa and could only imagine the horrified parents. Mahalo from our community for saving a life and representing! She credits her training to longtime city and county employee Kerry Terukina who now organizes lifesaving and rescue classes.

DREAMS COMING TRUE FOR DRAKE HICKMAN

"If you believe in yourself and work hard you can make it," says Drake Hickman. Hickman is just 17 years old and has been given an invitation to the WSL Mormaii Big Wave Challenge and will be representing the USA and Hawaii! The event is holding until November 30th. "I am ready to compete" he said. We wish the North Shore surfer the best and congrats!



Joe Green at The Gold Shaka Award Ceremony.

North Shore Sports Therapy

(808) 778-8443 (808) 304-5776

Massage Therapy For Champions!

Kalo (Taro) Collection at Waimea Valley

By Hinano Tangaro, Propagator, Waimea Valley, O`ahu

Kapu ka Haloa ku ma ka pe'a
Kanu ia Haloa ulu haha loa
O ka lau 'o Haloa I ke au la
Puka

Kapu the taro stalk that stood by the woman's kapu house
Haloa was buried [there], a long taro stalk grew
The offspring of Haloa [born] into the day-
Came forth

(Kalakaua text: Ka wa Umikumamakolu, 1810-1813)

Kalo (the Hawaiian name given to the taro plant) (*Colocasia esculenta*) is one of the oldest cultivated food crops in history. Deriving from Asia, kalo spread throughout the Pacific and eventually made its way to Hawaii. In Hawaii, prior to the Great Mahele in 1848, kalo was grown in vast quantities. It was the staple food of the early Hawaiian. After the Great Mahele the land was slowly parceled off and the privatization of land became prominent. The use of agricultural land drastically changed and kalo's role from a staple food crop was replaced by other food crops such as rice and sugar cane.

At one point there were over 90 Hawaiian varieties of kalo. Many sources claim that the number was closer to 300, but often the same variety was grown on different islands under different names. Due to our societies shift in food system and diet, over time many of the kalo varieties have been lost. In an effort to preserve the original well described varieties, with the help of contributors from all over the state, Waimea Valley is able to maintain a kalo collection that dates back to the late 1970's. Growing in our mala (garden) we have over 70 Hawaiian heirloom kalo varieties (which evolved here and were selected by Hawaiian farmers) grown for distribution and as a reference collection and we intend to expand it.

Safeguarding the kalo collection comes with many challenges. Ungulate threats are more manageable with proper intervention, whereas diseases like phytophthora blight, nematodes, and dasheen mosaic, if not handled with proper cultural practices and utmost care, can annihilate entire collections. Good horticultural practices and habits for maintaining the health and posterity of kalo are crucial to reducing the chances of these infections spreading.

At Waimea Valley, our annual Kalo and Awa Festival is a gathering that the general public and professionals in the kalo and awa community come together, to share the latest scholarly research. Local farmers speak about their efforts in growing kalo, while encouraging future generations of kalo farmers. With this new wave of kalo growers on the rise, knowledge of cultivating kalo is becoming ever more valuable.

Kalo is a domesticated plant meaning that they do not reproduce on its own. This super important indigenous food crop depends on humans to keep its population alive and thriving. We need to do



what we can to keep them around for the next generation to inherit the benefits of this traditional and culturally significant food.

FREE COMMUNITY EVENT

SON SET Fest

LIVE MUSIC • FOOD TRUCKS • TALK STORY

DECEMBER 9TH, 2017 4pm

59-578 KAMEHAMEHA HWY, HALEIWA



RED READER FOR LIFE

56-490 Kam. Hwy. #293-8935 M, W, Th: 9 - 5 pm; Tues: 12 - 8 pm; Fri: 9 - 3 pm
Hawai'i State Public Library System www.librarieshawaii.org

November 2017

CHECK US OUT ONLINE: Register for library programs online at: www.librarieshawaii.org check availability on all our **FREE** programs!



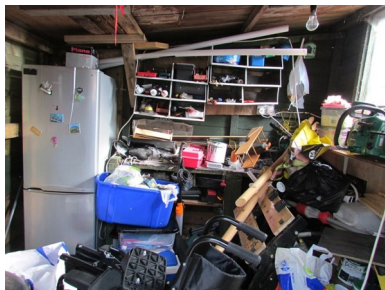
All Kahuku Library programs are generously sponsored by our Friends of the Library Kahuku, please support our FOLK.



Downsizing & De-cluttering

Tuesday, November 28th
5:30pm—6:30pm

Get ready for 2018 by downsizing and de-cluttering your space. Learn from de-cluttering expert Cynthia Arnold to keep your memories but let go of the stuff.



Family Financial 101 Education Workshop by the Kahuku Complex 21st Century Grant

Dates:

- Tuesday, Nov 7th 6:00pm
- Tuesday, Nov 14th 6:00pm
- Tuesday, Nov 21st 6:00pm
- Tuesday, Dec 19th 6:00pm

Completely Free!

Light refreshments at each workshop.



2018 Battle of the Books— Multiple copies available at the Library plus ebooks and audiobooks



Club: 1st & 3rd Mondays
2:45—4:15pm



Wed. 2:00-4:00p
Free Play



Every Fri @10am
Monday Music Time:
Nov 13th & 20th



Programs and Classes For Keiki to Kupuna

Please pardon the inconvenience but Kahuku Cool Lab Programs will resume in January. Stay tuned for exciting new programs to come in 2018!

Get your Kahuku Library newsletters and flyers by email

Email us at: KCL@librarieshawaii.org with your email address



LIBRARY CLOSED

**Fri, Nov 10
Thur, Nov 23**

WELCOME TO THE NORTH SHORE!



**NORTH SHORE
CHAMBER OF COMMERCE**

*An Affiliate of
The Chamber of Commerce of Hawaii*

Visit us at

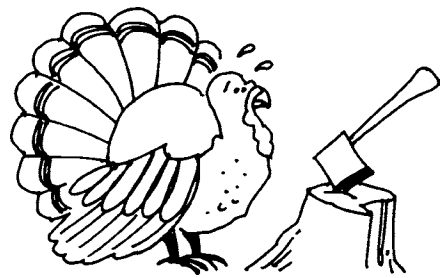
**66-434 Kamehameha Hwy.,
Haleiwa - across from the post office.**

- Visitor Information
- Business Services - Printing, faxing, etc.



- Historical Information & Tours

**www.GoNorthShore.org
808.637.4558**



GOT TURKEY?

North Shore News, Waialua Community Association and the North Shore Food Bank will be sponsoring a Thanksgiving meal for the community. Once again we are asking for turkey & monetary donations. Donate a frozen turkey or sponsor a turkey for \$25.

Donation deadline is Monday, November 20, 2017. Drop off at the North Shore News office M-F, 10:00am - 3:30pm. Please call 637-3138 before dropping off.

Checks can be made out to:

North Shore News
66-437 Kamehameha Hwy. #210
Haleiwa, HI 96712

Call 637-3138 or 780-8037
for information.

BULLETIN BOARD

Being
YOU

LAURA CHO-STUTLER, PSYD
LICENSED CLINICAL PSYCHOLOGIST

66-935 KAUKONAHUA RD
SUITE 103
WAIALUA, HI 96791

808.387.6764
WWW.BEINGYOUHAWAII.COM
DRCHOSTUTLER@GMAIL.COM

ADAMS & COMPANY
REAL ESTATE BROKERS



Alison R. Mitchell
REALTOR-ASSOCIATE®
(808)256-0152
RA 62065

NorthShore Marketplace
66-250 Kamehameha Hwy.
Haleiwa, HI 96712
alisonmitchell808@gmail

The Lawn Ranger-

*We put the law back into your lawn,
no yard too hard,
no lawn too far gone...*

**Trees, hedges, hauling,
multi acre properties.**

Fully insured, 25 years experience.

258-6439



Color your Night!

Paint and Wine Parties!
paintpaina.com

Now at: **Turtle Bay Resort**
Just Tacos, Mililani



Use promo code ARTIST for 10% off!

SIGN UP NOW paintpaina.com Call 808 781-2218
for group discounts, private parties, fundraising, and wine tasting events.



"THE BULLETIN BOARD THAT IS IN EVERYONE'S HOME"

BULLETIN BOARD



Featuring the largest selection of certified organic produce on the North Shore.
No panic...ours is organic.
Open 7 days.
Mon.-Sat. 9am-7pm.
Sun. 9am-5pm

66-445 Kam. Hwy
Haleiwa, Hawaii 96712
Next to the Post Office
808-637-6729 • 808-637-1922 fax



DR. PORTER TURNBULL
Chiropractic Orthopedist
(808) 638-8740
Appointments available Mon.-Sat.
(evenings by appointment)

- Industrial accidents & auto injuries
- Sports injuries • Spinal care
- Safe, Effective, and Gentle

N-C PLUMBING & SUPPLY

Cont. Lic. No. C-8913



- RESIDENTIAL & COMMERCIAL SALES & SERVICE
- CONTRACTING & DESIGN • HOME PLUMBING SERVICE
- PLUMBING FIXTURES, HEATERS • FREE ESTIMATES

Nestor P. Calilao (Owner)
P.O. Box 769
Waialua, HI 96791

Bus: 637-8662
Res: 638-5157
Cellular: 372-8718

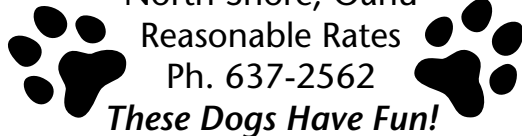
BOW WOW BUNGALOWS

Licensed Boarding Kennel

North Shore, Oahu

Reasonable Rates

Ph. 637-2562



These Dogs Have Fun!



JADE HALAMA
REALTOR® ASSOCIATE
RS - 78726

PIECE OF PARADISE INT'L LLC
1888 KALAKAUA AVE. SUITE C312 HONOLULU, HI 96815

- ✉ JADE@PIECEOFPARADISE.COM
- 🌐 WWW.PIECEOFPARADISE.COM
- ☎ 808.439.9433.
- 📠 808.377.6680
- 📞 808.443.0880



Shannon Ayonon, LMT

MAT#14274

Heavenly Touch Mobile Massage Services

Also at North Shore Salon & Spa

Call to schedule your appointment

(808) 352-2677

Salon 637-8089

Insurance Accepted with Dr.'s Approval

Munden Design & Build

Lic.#BC19632

Design • Plans • Permits • Construction
Additions & New Residences

808 391-8616

Providing quality work since 1978

PARADISE

"IF YOU BUILD IT, WE WILL PLUMB"

PLUMBING

New Construction, Repair, Remodels

Dale Christensen

C-29856

(808) 368-1473

New Construction • Drain Cleaning

Got Leakz? Call Greekz!
Residential • Commercial • Remodels • Line Locating • Copper • Galvanize

372-1820
Greekz Plumbing
#C-32939
Plumbing Service & Repair

Greekz Plumbing

License# C-32939
Phone 372-1820

School of Champions

Established 1966

International Karate Federation



IKF Waialua Dojo
Waialua Elementary School

Beginner classes - ages 5 & up
Mon & Wed 5:00 - 6:00 pm

Intermediate classes
Mon & Wed 6:00 - 7:30 pm

Call 780-5457 or email: wvbinz.bb@gmail.com



56-463 Kamehameha Highway Kahuku, Hawaii 96731

Phone 293-9341 Fax 293-1907

www.rainbowschools.com

PUBLIC RELEASE

Today, Wednesday September 27, 2017 Rainbow Schools

announced its sponsorship of the USDA Child Care Food Program. Meals will be made available to enrolled children/clients at no separate charge without regard to race, color, national origin, sex, age, or disability. Parents'/clients' income determines the amount of money USDA will reimburse us to provide meals to enrolled children/clients. The income eligibility guidelines listed below are used to determine our reimbursement from USDA. Children/clients from households whose annual income is at or below these levels are eligible to be counted for free or reduced-price meal reimbursements,

Family Size (Annual Income)	1	2	3	4	5	6	7	8	Member-Add	For each Additional Family
	18,018	24,271	30,524	36,777	43,030	49,283	55,536	61,789		+6,253
Reduced	25,641	34,540	43,438	52,337	61,235	70,134	79,032	87,931		+8,899

In accordance with Federal civil rights law and U.S. Department of Agriculture (USDA) civil rights regulations and policies, the USDA, its Agencies, offices, and employees, and institutions participating in or administering USDA programs are prohibited from discriminating based on race, color, national origin, sex, disability, age, or reprisal or retaliation for prior civil rights activity in any program or activity conducted or funded by USDA.

To file a program complaint of discrimination, complete the USDA Program Discrimination Complaint Form, (AD-3027) found online at: http://www.ascr.usda.gov/complaint_filing_cust.html, and at any USDA office, or write a letter addressed to USDA and provide in the letter all of the information requested in the form

Meals will be provided at: Rainbow School Kahuku 56-463 Kamehameha Hwy. Kahuku, HI 96731/ Rainbow School Sunset Beach 59-578 Kamehameha Hwy. Haleiwa HI 96712/ Rainbow School Wahiawa 108 California Ave. Wahiawa, HI 96786. Rainbow School Mililani 95-1361 Meheula Prkwy. Mililani, HI 96789. Rainbow School Honolulu PJKK Federal Building 300 Ala Moana Blvd. #1408 PO Box 50043 Honolulu, HI 96850. Rainbow School Kaneohe 45-211 Waikalua Rd. Kaneohe, HI 96744

This Public Release will be sent to:

North Shore News

Wednesday September 27, 2017 (Published in October 2017)

Name of Media

Date

This institution is an equal opportunity provider



Congrats to the Amantiad wahine who battled their way across 44 miles of open ocean in the Na Wahine O Ke Kai Molokai Race 2017. Varina-Manu O Ke Kai, Evonne-Puna, Big Island and Kahanu-Lanikai Junior's



OHANA DROP
Sponsored by the North Shore Food Bank
Wednesday, November 1, 2017
Waialua Community Association, 11am
Bring your bags and boxes for great produce



North Shore Food Bank
 Food Bag Distribution
 Wednesdays, 10 a.m.-12 p.m.
 Waialua Community Association
 Donations of non-perishable canned foods can
 be dropped off at the North Shore News office.
 For more information: 637-3138
 northshorefoodbank@gmail.com

WAIALUA PUBLIC LIBRARY UPCOMING EVENTS

Used Book Sale

Saturday, November 18, 9am-2pm

Last Booksale of 2017

Weather Permitting

Readers' Group

Thursday, Dec. 7, 9:30-11am

Pick of the Month: "Barbarian Days: A Surfing Life"
 by William Finnegan

Writers' Group

Saturday, Nov. 11, 11am

Topic of the Month: "Second Chances"
 Call for holiday meeting location 638-7497

Recurring Events

Computer Instruction - Fridays, 9am
 Toddler Time - Fridays, 10am
 Children's Storytime & Crafts - Saturdays, 10am

Pumpkin Art Show

Waialua Elementary 1st graders will display
 their pumpkin art in the library 10/17-11/8

Library will be closed Saturday, Nov. 11, 2017

For a sign language interpreter or special accommodations please call 637-8286

North Shore News		2017 Schedule
PUBLICATION DATE	EDITION	DEADLINE DATE
November 8	#22	October 27
November 22	#23	November 10
December 6	#24	November 24
December 20	#25	December 8

Direct-Mailed to Every Home
 MOKULEIA • WAIALUA • HALE'IWA • KAHUKU • LAIE
 Every Other Wednesday 12,000 copies

"The North Shore's most popular publication" since 1970
 (808) 637-3138 • NShoreNews@aol.com • NSN4Linda@aol.com
 www.northshorenews.com



CLASSIFIEDS

The North Shore News is published every other Wednesday and mailed free of charge to all North Shore homes and businesses. Extra copies may be obtained at our office.

PRESS RELEASE POLICY: Submit press releases in person, mail or email to Editor, North Shore News, 66-437 Kam. Hwy., Suite 210, Haleiwa, HI 96712. Please type your releases and keep them shorter than 200 words unless they are of an unusual news interest. Releases should be viable news stories and are published on a **space available basis only**, with priority given to those received in our office first. You may attach photos. We are not responsible for the return of any photos. All materials are submitted at owner's risk. We reserve the right to edit and/or refuse all submissions including advertising.

EDITORIAL POLICY: We welcome articles and letters from our readers. Letters to the Editor are published on a space available basis only and preference is given to shortness of length, and quality of content. We prefer to run not more than one letter, per person, per 6 month period. Letters subject to edit.

Views expressed by our contributing writers and advertisers do not necessarily reflect the view of the management and staff of the North Shore News. All rights reserved. Reproduction in whole or part without permission is prohibited. © 2017.

Editor & Classifieds
Linda Seyler

Typography
Downtown General Store

Contributing Writers
Tom Jacobs
Betty Depolito
Naty Hopewell
City Councilman Ernie Martin
State Representative Lauren Matsumoto
Senator Gil Riviere
Malia K. Evans
Blake McElheny

Photography
Banzai Productions



Please recycle this newspaper.

SERVICES

SHORE ELECTRICAL SERVICE
New Const-Remodels
638-0049 / Lic#C20777

Computer Problems?
I can fix any MAC or PC.
Chris 371-3089

Andres Plumbing
All your plumbing needs
808-256-7337 Lic#C24500

North Shore Pumping
Septic and Cesspool Services
Clifford 638-0900 • 291-5099

Carpentry & Painting Services
Repairs/Remodeling,
Termite Rot, Doors, Cabinets,
Countertops, etc.
Reasonable Rates 271-6584

Green Gypsy Thrift Shop
Waiialua—(808) 366-4000
Next to Paalaa Kai Bakery

Dog/Cat Nail Trimming
At your home—only \$20.00
Call 637-5395

Waihuena Farms
CSA, EGGS, yoga, tours
Farmstand Mondays 2-5:30
Across from Pipeline
Mele 551-8132

North Shore Car Rentals
Low cost rental cars.
Rates are low by providing slightly older cars with a "local" vibe to them, don't be fooled. All vehicles are well maintained and safety inspected. please visit northshorecarrentals.com or call (808) 260-4960.

GROCERY DELIVERY
From
Whole Foods, Down to Earth
and Costco

\$15 plus \$0.50/item
NSgrocerydelivery59@gmail.com
599-0791

Paumalu Electric Inc.
C 18074

Residential & Commercial
New Installation & Repairs
Renovations. Remodels
Electric Meter Replacements

Dave Hancock 638-9054

Hawaii Tree Co.
Trimming & Removal
Professional-Reliable
Free Estimates
462-2749

LEARN TO SWIM
AT THE
HAWAII SWIM
SCHOOL
ON THE NORTH SHORE
Developing swimmers since 1982
Haleiwa Rd. at Smiley Place
637-4863

Radiant Skin Care & Waxing
Aynjul Benigno
Licensed Esthetician
Call or Text 808-222-8124
radiantskincaresandwaxing.com
66-935 Kaukonahua Rd.,
Waiialua

Massage Therapy
Specializing in Swedish
relaxation, Sports Massage
Deep Tissue—Gift Certificates
25 yrs licensed experience
MAT 8865
Call Allen 638-0346

**Why Knott Florist
and Lei Stand**
Now Open
Lei, Arrangements, Bouquets,
Corsages, Orchids, Succulents,
Tropical and more.
Waiialua Shopping Center
808-637-9380

BIKRAM YOGA

*BUILD STRENGTH,
FLEXIBILITY & BALANCE*
BEGINNERS TO ADVANCED
Please call for class schedule
637-5700

HARVEY'S TOWING LLC
24 hr Towing Service
Lockouts, Jumpstarts &
Recovery. Specializing in
opening locked car doors.
Call anytime 478-0333

**Your Clean Home
Vacation/Residential
Home Cleaning**
Affordable • Reliable
• Green Cleaning
**For Free Estimate
Call 364-6089**

BOBBY'S BODIES
Tuesday evenings at 5:00 p.m.
• Body Toning
• Cardio Pump/Fat Burner
For more info: call Bobby, owner of
BOBBY'S BODIES at 637-4150

**ANGELS
PLUMBING**
Repairs
Remodeling
Renovation
638-7878
Lic. #C12004

Aloha Computer
PC/MAC Repair/Virus Removal
Fax/Copy/Internet Access
Located next to Paalaa Kai Bakery
Open M-S, 10-4.
372-2667 or 237-4558



Like us on Facebook:
[Facebook.com/
NSNewsHaleiwa](https://www.facebook.com/NSNewsHaleiwa)

HOW TO CONTACT THE NORTH SHORE NEWS

Letters to the Editor, and other items submitted for publication consideration may be sent to us via:

MAIL: 66-437 Kamehameha Hwy., Suite 210, Hale'iwa, HI 96712

E-MAIL: NShoreNews@aol.com

PHONE: (808) 637-3138

Office Hours: Monday – Friday 10 a.m.-3:30 p.m.

www.northshorenews.com

CLASSIFIED ADS

Next Issue - Nov. 8, 2017
Deadline Date - Oct. 27, 2017

FREE ADS
Garage & Yard Sales, Reunions, Lost & Found.
Email ad to:
NShoreNews@aol.com

BUSINESS SERVICES CENTER
Fast & Convenient Copy, Fax, Scan, Computer/Internet, Laminate, & More

Across from the Haleiwa Post Office
637-4558 • gonorthshore.org
#gonorthshore

Adams & Co Real Estate
Vacation Rental Cleaning
Move Out Cleaning
20 Yrs/Exp \$20/hr
Hauula to Waipio
Call Marisa 721-9328

Classified Ad Rates
3 lines (min.) \$18.89
4 lines \$25.13
5 lines \$32.45
1" Box Ad \$41.88
(27 characters in each line)
Include your contact information.
**Ads can be dropped off in mail slot, mailed, or emailed. Pay by check payable to: North Shore News or credit card by phone order.*
We reserve the right to refuse any advertisement with a full refund.
North Shore News • 66-437 Kam. Hwy., Suite 210, Haleiwa, HI 96712
• (808) 637-3138 • NShoreNews@aol.com


Marianne Abrigo, Properties
Specializing in - North Shore Real Estate
Ask for our list of available properties and/or a free market analysis.
Marianne M. Abrigo
"Realtor since 1974"
Office 637-3511
Fax 637-0777
Email mabrigo222@aol.com

HELP WANTED
Housekeeper
Beachfront Estate
16/hrs per week
637-0808

Hairdresser wanted
Part-time at Billy's Barber Shop
637-5550

NORTH SHORE SURF SHOP ALOHA AMBASSADORS NEEDED!
NOW HIRING! Sales Staff and Manager Positions-Hard Working and Friendly-Japanese, Korean, Chinese Speakers are a PLUS-COME JOIN OUR OHANA!
CALL 637-5002 NOW!
Apply in Store
66-150 Kam Hwy, Haleiwa.

Retail Sales Surf & Sea
Hawaii's Ocean Sports Headquarters is always looking for hard working, energetic people to become a part of our sales team. Good pay, bonus, benefits. Japanese speaking a plus. Ocean sports experience and dive instructor wanted. Please contact surfnsea@surfnsea.com for details.
Apply in person daily 9am-7pm
62-595 Kam. Hwy., Haleiwa

Matsumoto Shave Ice
Now Hiring!
Apply in person daily
9a-4p
808-637-4827

FOR RENT
Large Fully Furnished Studio
Privately Gated Estate in Pupukea
Full Granite Kitchen, Refrigerator w/ Icemaker
Full Marble Bath w/ Marble Shower
Large Living Room
Landscape Maint. Included
\$1,695/month
Call 838-1202

TABLES & CHAIRS
780-8037

MISCELLANEOUS

FOR A CURE
Drop off your recyclables on the last Sunday of each month! 66-345 Haleiwa Road, Haleiwa, HI 96712
Schedule a pick up: saltlady808@gmail.com
Proceeds to benefit the Susan G Komen 3 Day Walk for a Cure Team Six at Sixty
Visit: www.the3day.org to find out more about how you can help support me and other breast cancer survivors and co-survivors.

GOT TURKEY?
North Shore News, Waialua Community Assn., & North Shore Food Bank will be sponsoring The Annual Thanksgiving Meal for the community.
We are asking for turkey and monetary donations.
For information contact NSN 637-3138

Wild Bird Rehab Haven
Emergency Care, Support & Advice for Birds
808-447-9274
24/7 Helpline

Would you like to get the North Shore News via email in color! Just send your email address to us at: NshoreNews@aol.com and you get the NSN online, free every two weeks!

Parkinson's Group Meeting
Group meets at the Waialua United Church of Christ on the 1st Saturday of every month.
Friends & Family Welcome
Next meeting November 4 @10am Abel 253-9541

NOAA Stranded, Entangled Injured Sea Turtles
(808) 725-5730

FIRST AID/CPR/AED CLASSES
Pediatric/Infant & Adult free classes
November 4- Adult
December 9- Pediatric/Infant
Call for information 358-2219
kbrown@rtsconsulting.com

OFF da ISLAND
Are you leaving Oahu on vacation or business? Do you live on a neighbor island, the mainland or foreign country and subscribe to the North Shore News? Try send us a photo of someone in front of a sign or landmark holding a copy of the NSN. Email your photo along with the person or persons' name, community of residence, telephone number and photo location to: NShoreNews@aol.com.

North Shore Food Bank
Food bag distribution
Wednesdays at Haleiwa Gym across from Post Office
10am-12pm

PERMITS
Camping (808) 587-0109
Hiking (808) 587-0166

YOGA CLASS
All are welcome to a special pre-veterans day restorative yoga class Nov 9th at the co-op. Northshoreyoga.org. 7-8:15pm by donation. A portion of the proceeds benefit the wounded warrior project. 67-174 Farrington Hwy 96791

Premier Benefit Consultants
Julie Agbayani-Hall
808-343-2047
Leilani Soliven 808-478-1137
We provide free, no obligation consultation to find the best plan to fit your healthcare needs

For Advertising Rates
Call 637-3138 or go to
www.northshorenews.com

North Shore Taekwondo for Kids
(behind Haleiwa post office)
Mon & Wed
Ages 4-6 / 4:15pm
7 and up/ 5pm
Facebook: North shore taekwondo



Like the North Shore Food Bank on Facebook:
Facebook.com/Haleiwa Food Bank



Red Bull Queen OF THE BAY



OCT 1ST - NOV 21ST, 2017
BIG WAVE EVENT
NORTH SHORE, OAHU, HAWAII

WOMEN'S WAIMEA BAY CHAMPIONSHIP



womenswaimeabaychampionship.com / facebook