



**“E Ala Na Moku Kai Liloloa”**

In This Issue:

WSL Hawaii Welcomes  
Hurley Surf Club  
Page 6

Red Bull Queen of  
The Bay  
Pages 11-13

NS Pets  
Pages 15-21



Niko & Kelly

NORTH SHORE NEWS October 11, 2017 VOLUME 34, NUMBER 19



Front row- Council Chair Emeritus Ernie Martin, Bill Martin, Chris Courtois, Head Surf Coach of Access Surf and Bill Quinlan. Back row- Councilmember Joey Manahan, Councilmember Ann Kobayashi, Councilmember Carol Fukunaga, Councilmember Ikaika Anderson, Councilmember Brandon Elefante, Councilmember Kymberly Marcos Pine, and Council Chair Ron Menor

**North Shore Chamber of Commerce Recognized by Honolulu City and County Council**

On September 6, 2017, Honolulu City and County Council members gathered to recognize everyone involved in the collaborative effort to make handicapped access to North Shore beaches a reality. The Council lauded the Chamber, Access Surf and other

partners for the installation of handicapped beach access mats at Ehukai Beach and the world-famous Pipeline surf break in 2016, as well as Ali'i Beach in 2017.

Funds for the project were generously donated by First Hawaiian Bank courtesy of North

Shore Chamber of Commerce Board Member Sarah Cadiz, Assistant Vice-President/Branch Manager at First Hawaiian Bank Haleiwa, Susan Smith of McDonald's Haleiwa, Jodi Wilmott of the World Surf League, and the D'Ascoli Family.

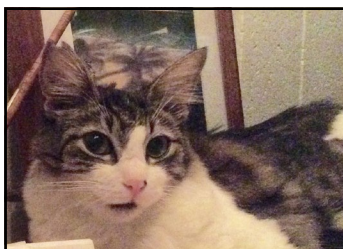
66-437 Kamehameha Hwy., Suite 210  
Haleiwa, HI 96712

PRE-SORTED  
STANDARD  
U.S. POSTAGE PAID  
Honolulu, Hawaii  
Permit No. 1479

PROUDLY PUBLISHED ON THE  
**North Shore of Oahu**  
Home of  
**The Red Bull Queen**  
of the Bay Championship



"The three best friends that anyone can have- Hazel, Kimo and Rylee"



**LOST CAT !**

Last seen August 26  
at home on Akule St. -  
Waialua

\$100 reward if you  
find her

If you put a cat trap out please let me know  
her name is ' Panda '  
female - 1 year old - spaded - microchipped  
white & dark grey fur - long fluffy tail

Call 808 237 9494  
Francesco

**North Shore Chamber of Commerce  
General Membership Meeting**

October 25 - 8am  
Haleiwa Joe's

Continental breakfast \$10 members/\$15 for non members

Topics to be discussed:

Top Five Takeaways from Hawaii 2017 Global  
Tourism Summit by Charlie Teixeira of North Shore  
Embroidery-Route 99

John Kalili Surf Center- Should the second  
floor be preserved as a community center?

Homeless in Haleiwa- What effects are businesses  
experiencing? Should the community consider hiring  
nighttime security?

**The Hale'iwa Family Dental Center, Ltd.**



now offering **FASTBRACES**



- Adults and children
- Most cases completed in 4-12 months
- Clear braces available
- Lower cost
- University tested
- Used for over 20 years

Produced by Todd R. Okazaki and Staff

"Straighten those crooked teeth that have  
bothered you for years"

Conveniently located behind First Hawaiian Bank in  
Historic Hale'iwa Town  
Call 637-9652 for your reservation





### Book Your Holiday Event at Waimea Valley!

**\*\*\* Book by November 1 and Receive FREE Waimea Valley Annual Family Passes for Your Employees! \*\*\***

Contact us today to learn more about our indoor/outdoor venues, in-house catering and event planning services for company holiday parties of all sizes!

### 6<sup>th</sup> Annual Makahiki Festival & Ke'Alohi Hula Competition

**Saturday November 18 at the Upper Meadow & Amphitheatre**

Celebrate Makahiki at the Valley! Annual hula competition, traditional games, live music, local vendors and artisans, 'ono food – Learn more at [waimeavalley.net](http://waimeavalley.net)



### Family Days at the Valley

**Kama'aina Keiki Wednesdays and Lā 'Ohana Sundays (3<sup>rd</sup> Sunday Every Month)**

Kama'aina keiki 12 and under enjoy free admission every Wednesday! Bring the entire family for a fun-filled day of Hawaiian activities, games, and much more for all ages

### Weekly Hale'iwa Farmers' Market

**Thursdays 2 - 6pm at the Pikake Pavilion**

Join us every Thursday, rain or shine, at this award-winning weekly market featuring fresh produce, local vendors, arts and crafts, and live music



**WAIMEA VALLEY**  
HI'IPAKA LLC

Botanical Gardens, Cultural Activities, & Waterfall

On the North Shore Across from Waimea Bay

Open 7 Days a Week, 9am - 5pm

Call: (808) 638-7766

WHERE HAWAII COMES ALIVE

[WAIMEAVALLEY.NET](http://WAIMEAVALLEY.NET)

**\*\*LIMITED TIME SPECIAL**  
**NEW AUTO LOAN**  
**2.95% \*APR**



**WAIALUA FEDERAL CREDIT UNION**  
 67-292 Goodale Ave A2 • Waialua HI 96791  
 (808) 637-5980 • www.waialuafcu.com

\*\* Limited Time Special - Now through December 31, 2017. Up to 72 months.

**COME IN OR  
 APPLY ONLINE**

\* Annual Percentage Rate

FREE COMMUNITY EVENT

**SON  
 SET  
 Fest**

LIVE MUSIC • FOOD TRUCKS • TALK STORY  
 DECEMBER 9TH, 2017 4pm  
 59-578 KAMEHAMEHA HWY, HALEIWA

**Come Celebrate our North Shore  
 Community & Surf Culture**

V BOUTIQUE

**basic  
 • earring •  
 class**

Friday  
 October 20, 2017  
 4-6pm

-\$45 per person, all  
 supplies included

-Step by step  
 instructions

\*Limited space available  
 Call or visit the store  
 to reserve your space (808)637-1597





**Council Chair Emeritus  
Ernie Martin  
Serving You in District 2**

**Health Benefits of Owning a Pet**

Sixty-eight percent of U.S. households, or about 85 million families, own a pet, according to the 2017-2018 National Pet Owners Survey conducted by the American Pet Products Association. On Oahu, sixty-percent of households own a pet.

The love and companionship pets provide also translate into physiological and psychological benefits for their owners. According to the Centers for Disease Control and Prevention, pets can decrease your blood pressure, cholesterol levels, triglyceride levels, and feelings of loneliness. Pets can also increase your opportunities for exercise, outdoor activities and social interaction.

There have also been numerous studies conducted by University of Wisconsin-Madison pediatrician James E. Gern that have demonstrated the benefit to having a pet at home. His research published in the Journal of Allergy and Clinical Immunology shows that early exposure to a pet can actually lower a child's likelihood of developing related allergies by as much as 33 percent and help to develop stronger immune systems overall.

If you are looking for an opportunity for social interaction for you and your pet, the Hawaiian Humane Society Pet Walk 2017 will be held at Magic Island on October 29th. Participants can register online at <https://www.hawaiianhumane.org/petwalk/>. There is no registration fee, and participants collect donations via an online page or a printed form. The event features food, fun, and entertainment for people and their pets.

Also if you would like to help your pet, Poi Dogs and Popoki's The Big Fix, a fully equipped surgical unit that provides affordable spay and neuter services in some of our most rural and underserved areas on the island will be in nearby neighborhoods. This high volume, high quality clinic utilizes only licensed veterinarians from Waianae to Waimanalo.

Clinics fill up quickly, so if you cannot get into a clinic - it may be full. You can email [bigfix@poidog-sandpopoki.org](mailto:bigfix@poidog-sandpopoki.org) for further assistance. Here are a few of the upcoming dates:

Saturday, October 14th

Dogs at Patsy Mink Regional Park in Waipio

Tuesday, October 17th

Cats (pets and ferals AM) and Dogs (PM) at Hawaiian Memorial Cemetary in Kaneohe

Thursday, October 26th

Cats (pets and ferals AM) and Dogs (PM) at Kokolio Beach Park in Haaula

Friday, October 27th

Cats (pets and ferals AM) and Dogs (PM) at Waiialua Community Association in Haleiwa

Monday, October 30th

Cats (pets and ferals AM) and Dogs (PM) at Patsy Mink Regional Park in Waipio

If you would like to share a comment or concern, you can contact my office at 768-5002 or email me at [emartin@honolulu.gov](mailto:emartin@honolulu.gov)



Chairman Emeritus Ernie Martin, wife Melanie and Diddy  
Photo Courtesy of Anthony Consillio/Midweek

**ALOHA & WELCOME!**

**Open 7 Days**

**Which is YOUR favorite treat?**

- Snow Puffy
- Sada's Malassada
- Cinnamon Finger Puff
- Butter Roll
- Ensamada
- Apple Turnover
- Cream Puff
- Fudge Brownie
- Long John
- Smokie

**GET YOUR OWN DaBest VIP CARD**  
[www.pkbsweets.com](http://www.pkbsweets.com)  
 Sign up at our website!



## WSL HAWAII WELCOMES HURLEY SURF CLUB

WSL Hawaii proudly welcomes Hurley Surf Club as a key regional and community partner of surfing in Hawaii.

We are so excited to share a vision with the Hurley team and to partner with their local leader, Joel Centeio, one of the most successful, inspirational and well-rounded surfers to come out of our region.

Surfing for us, and for our community, goes way deeper than the contest jersey, and our partnership with Hurley exemplifies that.

First and foremost, surfing is a way of life that offers a healthy and creative opportunity for youth to explore their own path. Hurley Surf Club and WSL Hawaii will be honoring this by offering a variety of opportunities for youth as we move forward together. These opportunities will include development workshops, mentoring sessions with top pros, career experience, coaching clinics for a range of ability levels, and even movie nights.

With regards to competition, we are excited to announce the Hurley Surf Club Pro Junior at Turtle Bay Resort for our young professional athletes. Please join us by the Turtle Bay Pool, October 14 to 20 to cheer on our up and coming talented Juniors, and then stick around for a fun movie night or two:

### **Turtle Bay Resort Movie Nights Hosted by Hurley Surf Club:**

**Sun 10/15, 6:30pm @ Bay View beach lawn (adjacent to Roy's) – surf movie night**

**Mon 10/16, 6:30pm @ Kuilima Point – Clark Little's *Shorebreak***

**Tues 10/17, 6:30pm @ Kuilima Point – Kai Lenny's *Paradigm Lost***

**Fri 10/20, 7:30pm @ Surfer the Bar – Barron Mamiya movie premiere and Talk Story**

We look forward to sharing the stoke with you.

Aloha from all of us at WSL Hawaii,

*Jodi Wilmott, Marty Thomas, Lauren Rolland, Robin Erb, Danny Ecker*

### **About HYSDO**

*The Hawaii Youth Surfing Development Organization (HYSDO) is a 501c3 nonprofit organization working to deliver greater opportunities for Hawaii youth, in and out of the water. HYSDO strives to harness the power of surfing to build careers, strengthen communities, and develop the athletes of tomorrow. To learn more about HYSDO, please visit [hysdo.org](http://hysdo.org).*







# KAHUKU MEDICAL CENTER

welcomes

## Ember Christensen, D.O. and Lindsay Maugham, P.A.



### KMC PRIMARY CARE CLINIC

For appointments, call 808-380-1420

[www.kmc-hi.org](http://www.kmc-hi.org)

## FEED TROUGH LLP.

67-292 Goodale Ave.  
Waiialua shopping center.  
(808)637-5600



Come on down for all your pet needs

**-Specialty Dog & Cat Food**

(including Acana, Avoderm, Natural Balance)  
(Orijen, Propac, Red Flannel, Science Diet, and Solid Gold)

**-Horse, Chicken, Duck, Bird**

**Rabbit, Guinea Pig Feed**

**-Treats and Supplies**

FEED TROUGH LLP.

-5% off purchase of \$50.00 or more

EXPIRES December 31, 2017

Now renting U-Haul trucks & vans

## FUNDRAISE WITH PKB!



"Da Best"

Sada's Malassadas and  
Snow Puffies make the  
perfect combination!

We can help your  
local non-profit  
group reach your goals!



## PERFECT FOR



### SPORTS TEAMS

### COMMUNITY GROUPS



### SCHOOL GROUPS

Located at 66-945 Kauhonahua Road, right next to Paalaa Kai Mini Mart.  
Please visit our website at [www.pkbsweets.com](http://www.pkbsweets.com) for more information.



**Representative  
Lauren  
Matsumoto  
Serving You in District 45**

Aloha Friends, Family, and Neighbors!

I love being able to get out and explore the natural beauty that we have on the North Shore. A hike that I enjoy is Ka'ena Point Trail, a hike that can be enjoyed by the whole family. From the North Shore you can access the hike by driving to the end of Farrington Hwy. The hike starts at the end of the paved highway and follows the coast through both Ka'ena Point State Park and the Ka'ena Point Natural Area Reserve. The trail is 4.8 miles round trip and is for the most part flat staying along the shoreline. As there is very little shade along the hike a hat, sunscreen, and plenty of water is recommended. It is recommended to bring two liters of water per person, per day in order to remain properly hydrated.

The trail follows an old railroad track and dirt road that used to connect the North Shore to Wai'anae. When you reach the Ka'ena Point Natural Area Reserve you will go through a double door predator proof fence. This is designed to keep rats, mice, mongoose and other predators away from the nesting seabirds and sensitive dune system. Just beyond the fence is a large limestone feature name Leina ka'uhane. This is considered sacred, Hawaiian mo'olelo says that when a person passes away their soul would travel to the point, then leap off from the earth and enter the underworld or afterlife.

As you continue on Laysan Albatross (moli), Wedge-tailed Shearwater ('Ua 'u kani), and White-tailed Tropicbirds (Koa'e 'kea) make their nests in this area on the ground within the dune system. The dune system is an excellent example of the type of ecosystem that can be found in the Papah'naumoku'kea Marine National Monument. There is also potential for seeing Hawaiian Monk Seals ('ilioholoikauaua) along the hike. As you reach the end of the hike you will come to the Ka'ena Point Lighthouse which was first commissioned in 1919. The original lighthouse is no longer standing it was toppled from erosion, the current one was installed in 1990.

Lastly, remember to always be prepared when hiking and please note that no dogs are allowed on this hike because of the sensitive habitat, potential nesting seabirds and potential Hawaiian Monk Seals. As always, please feel free to contact me if you have questions or concerns about any happenings in our community. Call me at (808) 586-9490, email RepMatsumoto@Capitol.Hawaii.gov, or visit RepMatsumoto.com.

# The most caring pet shipping available, paws down.

Your pet means the world to you.  
So rest assured, when your pets travel with us,  
we make their safety and comfort a priority.



Call 1-877-HA-CARGO | [HawaiianAirCargo.com](http://HawaiianAirCargo.com)



Certified  
IPATA  
Member



# Olakino Maika'i

(Good Health)

by Marcus Angulo APRN

## Pets and Health

Animals contribute to our health and well-being in many ways. Studies have shown that patients (children and adults) respond better to medical therapy when pets are able to provide them with emotional support. We know that increased emotional stress negatively affects a person's physical health and terminal patients who laugh more live longer than their counterparts.

Everyone is familiar with the service animal which is well-trained to help their owner perform physical tasks they can't do on their own, such as guiding them down the sidewalk. These animals can also alert the person of an impending seizure. Service animals are considered medical equipment and are allowed in places where animals are typically forbidden. There are federal and local laws that protect service animals and their owners.

An emotional support animal is typically used by someone with a mental health disorder, including anxiety, depression, and autism. Such animals have been shown to reduce people's fear and anxieties when flying, and under social stress, and to improve social behaviors of those with autism. These animals do not undergo formal training, and are not usually protected under federal and local laws. service animal. Consequently, we as medical providers are sometimes asked to write letters confirming that a patient's pet is necessary for their emotional stability in specific situations.

A therapy animal is a pet that undergoes training and is formally registered to accompany their owner to visit hospitals, long-term care facilities, or schools. They are often seen walking the halls in a hospital and visiting with patients who request to see them. Animals can provide unconditional love and support and thereby, contribute to your health.

### Ko'olauloa Health Center

293-9231

*We accept everyone regardless of ability to pay.  
Improving the quality for life for all. Imua!*

**Dining with Dogs**  
**A NIGHT OF STARS**

RECOGNIZING OUR DEDICATED VOLUNTEERS & DOGS IN TRAINING

**FRIDAY, OCTOBER 20, 2017**  
**HONOLULU COUNTRY CLUB**

**DINNER & AUCTION!**  
Silent Auction starts at 5PM, delicious buffet at 6:45PM, and no-host bar throughout!

**PLEASE RESERVE YOUR DINNER SEATS TODAY!**  
\$100 each, (\$44 deductible). Please make checks payable to "Hawaii Fi-Do Service Dogs" and mail to:  
PO Box757, Kahuku, HI 96731  
(Taxpayer ID #99-0353345)

----- PLEASE CUT AND RETURN -----

Number of seats: \_\_\_\_\_ @ \$100 = \_\_\_\_\_ or,

Number of table(s) of ten (10): \_\_\_\_\_ @ \$1,000

Name: \_\_\_\_\_ Tel. #: \_\_\_\_\_

Address: \_\_\_\_\_

Email: \_\_\_\_\_

YOU'RE INVITED TO  
NEW HOPE HALEIWA'S

**FALL**

**FESTIVAL**

TUESDAY  
**10.31.2017**

HALEIWA ELEMENTARY SCHOOL

*Free Food Games Candy  
Trunk or Treat & Country Store*  
6:30 - 8PM



# The REAL Hawaii Fi-Do Dogs

Being a North Shore non-profit for over 18 years that works with very special dogs, Hawaii Fi-Do Service Dogs would like to share the work we do and honor the skilled “working dogs”. Service dogs are more than pets, they are an aid for people with disabilities to live a more independent life.

Hawaii Fi-Do is a small 501 c3 grass roots organization based in Sunset Beach, originally started in a special education vocational class at Kahuku High School. It is the first ADI accredited program in Hawaii and have placed skilled working dogs teams on Oahu, Maui and Hawaii. Our specifically bred and tested dogs train for at least 2 years and are given for free to qualifying Hawaii residences.

We get many calls asking questions about service dogs and the laws especially on public access and the law. The federal law protects public access under the ADA law but are fairly “grey “in the explanation resulting in abuse of pets being claimed as skill, trained dogs.

Service Dogs are legally defined (Americans With Disabilities Act, 1990) and are trained to meet the disability-related needs of their handlers who have disabilities. Federal laws protect the rights of individuals with disabilities to be accompanied by their service dogs in public places. These dogs are individually trained to do work or perform tasks for the benefit of an individual with a disability, including a physical, sensory, psychiatric, intellectual, or other mental disability. The work or tasks performed by a service dog must be directly related to the handler’s disability. The crime deterrent effects of a dogs presence and the provision of emotional support, well-being, comfort, or companionship do not constitute work or tasks for the purposes of this definition.

Emotional Support Dogs provide therapeutic support to disabled or elderly owners through com-

panionship, non-judgmental positive regard, affection, and a focus in life. Emotional support dogs are allowed in public housing but do not have public access rights as guaranteed by the Americans With Disabilities Act (ADA). They are not necessarily task trained like service dogs and are generally required to be reasonably well behaved by pet standards.

Hawaii Fi-Do will be happy to answer questions or concerns.

Contact; Susan @hawaiifido.org



Service Dog “Finn” on duty with his wounded warrior handler at K-Bay



Just for fun-our last litter of lab pups starting the service dog program



Hawaii Fi-Do Volunteer puppy raisers and working teams



# 2017 QUEEN OF THE BAY

Womens Waimea Bay Championship



OCT 1ST - NOV 21ST, 2017  
BIG WAVE EVENT  
NORTH SHORE, OAHU, HAWAII



CHRONIC

The Bus  
North Shore Activities Tour



PAKALONA  
BIKINIS



# The Red Bull Queen of the Bay

Women's Stand Alone Big Wave Event  
 Historic First of It's Kind Surf Contest  
 Waiting Period: October 1 - November 21st, 2017  
 Wave Height: 15 - 20 Feet  
 Location: Waimea Bay  
 Time: 8am to 4pm  
 BWRG Big Wave Risk Assessment Group Clinic for Competitors: October 15th, WSL Office, Haleiwa 8-5pm.

Details:

- High Surf Risk Management
- CPR Certification
- Spot Analysis of Waimea Bay
- Past case Waimea Bay scenarios
- Equipment and tools
- Rescue Techniques
- Non-Verbal communication signals
- In water Jet Ski Pick Up training

## The Path to Red Bull Queen of the Bay Celebrating Kanaka Wahine in History and the Women who Surf Big Waves Today

A new movement of women big wave surfers has emerged over the past several years. Surfing down the face of waves taller than 50 feet and pulling into barrels that could easily fit a train, their feats have eclipsed any doubts that women could tackle the biggest and heaviest waves on earth. Driven both by practicing legends of the sport as well as a new breed of women that's hungry to pioneer new waves and new heights, their numbers are thick. The movement looks unstoppable and is gaining momentum. Keala Kennelly surfed the biggest barrel of 2015 at Teahupoo, out-surfing the men. Emi Erickson surfs Waimea Bay on a single fin. Bethany Hamilton charged Pipeline months pregnant with one arm. Maya Gabeira died surfing a 50-plus foot wave, and then came back to life to keep surfing. The Red Bull Queen of the Bay, the first ever Women's Waimea Bay Championship, symbolizes a culmination of their feats, bringing women who surf big waves together at the birthplace of big wave surfing, Waimea Bay.

Isaiah Helekunihi Walker, author of Waves of Resistance, describes women's place in Ancient Hawaiian mo'olelo, or legends and oral history. In the majority of Hawaiian surfing mo'olelo, women are not only the star characters and protagonists, but are celebrated for their power, skill and dominance. Mamala the Surfrider describes the Chieftess Mamala surfing the largest waves off the south coast of Oahu, while people lined the beach to cheer and celebrate her. Walker notes that empowered female surfers and equality in the waves is surfing's true roots, and that a lack of respect and honor is a twisted product of decrepit colonial social norms. In the modern era of surfing, Linda Benson from California was the

first woman to surf Waimea Bay in 1954 at age 15. The Gidget movie stunt double borrowed a 10-foot gun on an 18-foot day, not waiting to be left out of surfing that day with her friends. Rell Sunn surfed inside Waimea Bay at Pinballs at 8-12 foot with her friend, the gentle and accomplished surfer and shaper from California Cher Pendarvis. Avril was a big wave charger of the same period. Avril was known to surf Backyards Lefts on some very large days with Cher Pendarvis as well. On a big, sort of stormy day, Avril dropped in and lost her life.

Red Bull Queen of the Bay Director Betty Depolito surfed Waimea Bay regularly starting in 1980, pioneering the way for the women who surf there today. Layne Beachley was an accomplished big wave surfer, paddling and towing into a variety of harrowing waves. The women of the contest are all legends of the sport and have contributed to its progression in a myriad of ways. Most of accomplishments of women's big wave surfing have been self-funded. The women have battled prejudices, stereotypes, illegal discrimination, nasty threats and a shocking dearth of magazine and film coverage. However, there have been bright moments of coverage and support in modern women's big wave surfing, and many moments that show unequivocally women's self-reliance and depths of their power and love.

Mariah Ernst

Dedication to Sophia Bartlow  
 Love - Shine - Glow

The event will remember the highly energetic and masterful surf and SUP champion Sophia Tiare Bartlow who passed on in January 2017.



*Sophia at Waimea*

The **SURF** Bus  
 North Shore Activities Tour

**PAKALOHA**  
 BIKINIS

**SEAHAWAII**  
 Love the Ocean!



## RED BULL QUEEN OF THE BAY WATER WOMEN



**Remi Nealon grew up as an avid swimmer and surfer and is big wave savey. Martial arts training aids her strength and confidence. She lives in Waialua with her husband Christopher and has two sons Noa and Bering, a Mom dedicated to big wavesurfing, not an easy task. Surfing with other Wahine who share her passion is what she loves!**

**Jamilah Star is a Waimea Bay charger who loves life to the fullest. Her wave riding skills garnered XXL Big Wave wins and National Geographic named her one of the most adventures people in the world. Her flamboyant, loving personality has gained her world wide attention in surfing and has landed her on many magazine covers. This mother of three named her first, Waimea!**



**Emily Erickson is a natural rider at Waimea Bay. She is already famous for her big wave fearless and calculated approach to giant surf. She was nominated for an XXI award for outstanding performance. The Wahine knows the Bay and probably is one to watch for the title of Red Bull Queen of the Bay. This model is also an actress!**

**Shelia Lee is a partime Southern California and Hawaii resident. She recieved her masters in education from UH Manoa. Her passion includes taking her students around the world on trips and in the summers cruising around in her fully converted Ford equiped with solar panels, sink and all. Her passion for big wave riding and life are remarkable and lends well to the task at hand!**



**Nicole Pacelli grew up in Sao Paulo, Brazil, the daughter of hard core surfers! She is a World Champion stand up surfer and is a trained tow-in surfer who was the first women to SUP the big waves in Maui. She was a finalist of the XXL Big Wave awards and is known for her wonder women attempts at testing her limits!**

**Paige Alms is current Big Wave World Champion! She is talented and driven and is a "jack of all trades". The recorded ride of her pulling into a giant tube at Jaws garnered her the XXL Big Wave title and propelled her into Big Wave stardom. She loves organic gardening, playing ping-pong in local tournments in Maui. Alms also was a finalist in the Womens Pipeline Pro!**



**Makani Adric paddled out at Waimea at 16 and she was hooked. The purple belt Jiu-Jitsu competitor is well trained and determined to take off on some of the biggest waves. This organized and smart wahine is also a business woman who has launched her own line of water wear, [exoticcomforthawaii.com](http://exoticcomforthawaii.com). Watch for her backside attack any time Waimea Bay breaks!**

### COMPETITOR LIST

**Makani Adric Paige Alms Jessica Anderson Justine Dupont Jam Star  
Emily Erickson Michaela Fregonese Sarah Gerhardt Jenny Useldinger  
Brittany Gomulka Claudia Goncalves Tayla Hanak Raquel Heckert  
Keala Kennelly Sheila Lee Blake Lefkoe Andrea Moller Bianca Valenti  
Remi Nealon Kelta O'Rourke Nicole Pacelli Felicity Palmateer  
Emilia Perry Polly Ralda Gypsy Russ Momo Sakuma Shakira Westdorp**



# Oahu SPCA Wellness & Sterilization Clinic

“Every healthy, treatable animal will find a forever home” has been a success due to overwhelming community support for the local non-profit, Oahu SPCA. The organization is a no-kill animal shelter that has rescued over 500 animals this year alone. The shelter sets itself apart with it’s “no-kill” promise, a commitment to never euthanized homeless animals because of illness, breed or spacing constraints.

The Oahu SPCA offers a low cost clinic providing wellness and sterilization services to the public in an effort to improve overall health of Oahu’s animals as well as prevent unwanted pregnancies leading to abandoned animals. The organization announced October 1st that they are lowering their Wellness Visit rate to \$39, which is one of the lowest on the island. “We’ve decided to lower our office visit fee so that more pet owners will be able to afford the care their pets needs,” says OSPCA’s General Manager, Amanda Villeme. “By spaying and neutering your pet you could potentially save hundreds of lives, it’s something to consider as a pet owner. “

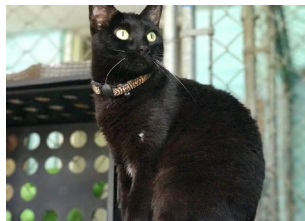
There are many opportunities to become involved with Oahu SPCA. Public is welcome to visit the facility to adopt, foster and volunteer. The shelter and clinic is open 10am-4pm Tuesday- Sunday and is located in Wahiawa at 823 Olive Ave. Visit [www.oahuspc.com](http://www.oahuspc.com) for more information or to make a charitable donation.

**KUA'AINA**  
The Best!  
· IN HALEIWA ·  
**637-6067**  
· IN KAPOLEI ·  
**674-4030**  
HALEIWA · KAPOLEI · TOKYO · LONDON

## Adopt and Foster



visit us at: Oahu SPCA  
823 Olive Ave, Wahiawa



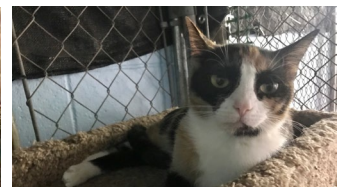
Luna



Aaron



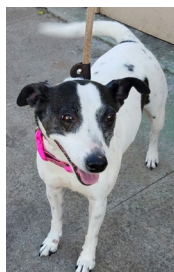
Calee- 7 yrs old.



Mittens



Niko



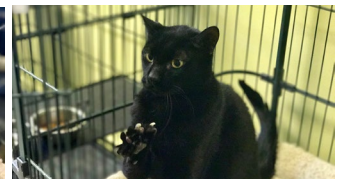
Trixie



Pumba



Mochi



Shadow

# WELLNESS CLINIC SERVICES

Vaccinations, microchipping, wellness exams, skin scraping, flea/tick treatments & so much more and much more.

## 10% off Wellness Services

Book your appointment today!

808-754-1519

[bookings@oahuspc.org](mailto:bookings@oahuspc.org)



**Ask us about our low cost spay & neuter services!**



# NS Pets



"Bam-Bam"



Queen Misty overseeing her territory



North Shore cat Penguin, lounging around in the backyard.



"I don't want to get up yet" Maka Kolohe Albiar



Let's Katchi-Katchi Baby! Ole!

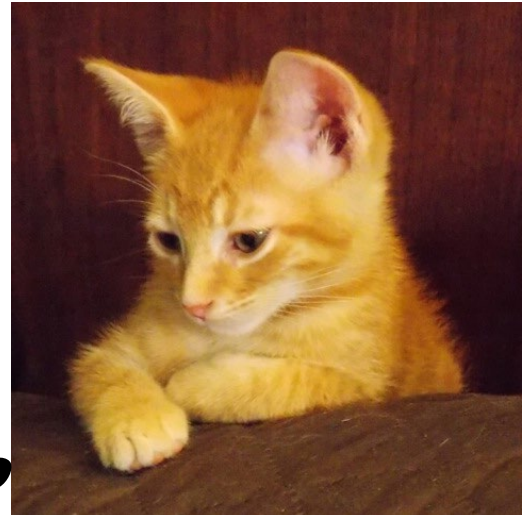




"Happy Birthday" Hau'oli La Ha'nau



Kona



Pua



"Happy Harvest Season!" Love Brody Boy



Momma Kitty

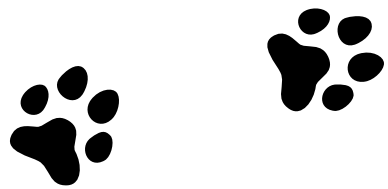


Hale and Iwa surfing buddies

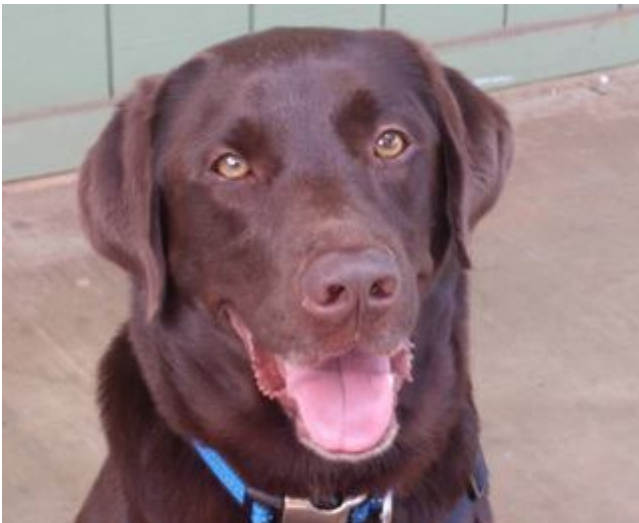
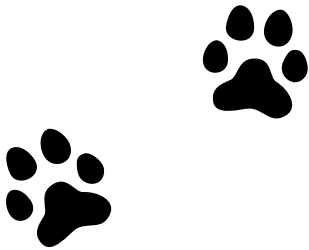




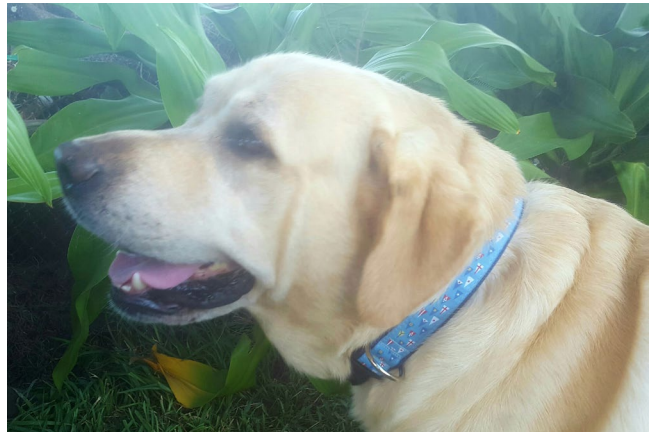
"Leilani"



Abby: "Nala, is that the Paparazzi?!"  
Nala: "Nah, it's just Mom taking a picture for the North Shore News."



"Yes! More pancakes please" Kona



"Captain"



Nod Kitty!



"I'm the Queen of this castle"



# ♥ PET MEMORIAL ♥

A new place to lay your beloved pets to rest  
*(only cremated remains accepted)*  
Communal burial or shelf urn burial available



For pricing and more information, please call:

Reverend Koji Ezaki  
Haleiwa Jodo Mission  
66-279A Haleiwa Road  
Phone: 637-4382



*"In the last moments that I held her-I called her name and she wiggled the tip of her tail, barely- Good bye, my friend" In loving memory of "Marungay"*



*Hapa Quinlan visiting Hokule'a*

# BULLETIN BOARD

Being YOU

Laura Cho-Stutler, PsyD  
Licensed Clinical Psychologist

---

66-935 KAUKONAHUA RD SUITE 103 WAIALUA, HI 96791      808.387.6764 WWW.BEINGYOUHAWAII.COM DRCHOSTUTLER@GMAIL.COM

ADAMS & COMPANY  
REAL ESTATE BROKERS



Alison R. Mitchell  
REALTOR-ASSOCIATE®  
(808)256-0152  
RA 62065

NorthShore Marketplace  
66-250 Kamehameha Hwy.  
Haleiwa, HI 96712  
alisonmitchell808@gmail

**The Lawn Ranger-**  
*We put the law back into your lawn,  
no yard too hard,  
no lawn too far gone...*

**Trees, hedges, hauling,  
multi acre properties.**  
Fully insured, 25 years experience.  
**258-6439**



**North Shore  
Pet Nanny**

Professional pet sitting, walking, training, etc...

Call Kathryn  
808-489-3645

**"THE BULLETIN BOARD THAT IS IN EVERYONE'S HOME"**



# BULLETIN BOARD



Featuring the largest selection of certified organic produce on the North Shore.  
 No panic...ours is organic.  
 Open 7 days.  
 Mon.-Sat. 9am-7pm.  
 Sun. 9am-5pm

66-445 Kam. Hwy  
 Haleiwa, Hawaii 96712  
 Next to the Post Office  
 808-637-6729 • 808-637-1922 fax



**DR. PORTER TURNBULL**  
 Chiropractic Orthopedist  
 (808) 638-8740  
 Appointments available Mon.-Sat.  
 (evenings by appointment)

- Industrial accidents & auto injuries
- Sports injuries • Spinal care
- Safe, Effective, and Gentle

## N-C PLUMBING & SUPPLY

Cont. Lic. No. C-8913



- RESIDENTIAL & COMMERCIAL SALES & SERVICE
- CONTRACTING & DESIGN • HOME PLUMBING SERVICE
- PLUMBING FIXTURES, HEATERS • FREE ESTIMATES

Nestor P. Calilao (Owner)      Bus: 637-8662  
 P.O. Box 769                      Res: 638-5157  
 Waialua, HI 96791              Cellular: 372-8718

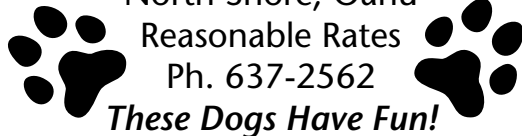
## BOW WOW BUNGALOWS

Licensed Boarding Kennel

North Shore, Oahu

Reasonable Rates

Ph. 637-2562



*These Dogs Have Fun!*



**JADE HALAMA**  
 REALTOR® ASSOCIATE  
 RS - 78726

PIECE OF PARADISE INT'L LLC  
 1888 KALAKAUA AVE. SUITE C312 HONOLULU, HI 96815

- ✉ JADE@PIECEOFPARADISE.COM
- 🌐 WWW.PIECEOFPARADISE.COM
- ☎ 808.439.9433.
- 📠 808.377.6680
- ☎ 808.443.0880



*Shannon Ayonon, LMT*  
 MAT#14274

*Heavenly Touch Mobile Massage Services*  
 Also at North Shore Salon & Spa

Call to schedule your appointment

(808) 352-2677  
 Salon 637-8089

Insurance Accepted with Dr.'s Approval

## Munden Design & Build

Lic.#BC19632

Design • Plans • Permits • Construction  
 Additions & New Residences

808 391-8616

*Providing quality work since 1978*

# PARADISE

"IF YOU BUILD IT, WE WILL PLUMB"

# PLUMBING

New Construction, Repair, Remodels

Dale Christensen      C-29856      (808) 368-1473

New Construction • Drain Cleaning

Got Leakz? Call Greekz!  
 Residential • Commercial • Remodels • Line Locating • Copper • Galvanize  
  
 372-1820  
**Greekz Plumbing**  
 #C-32939  
 Plumbing Service & Repair

## Greekz Plumbing

License# C-32939  
 Phone 372-1820

School of Champions

Established 1966

### International Karate Federation



**IKF Waialua Dojo**  
 Waialua Elementary School

Beginner classes - ages 5 & up  
 Mon & Wed 5:00 - 6:00 pm

Intermediate classes  
 Mon & Wed 6:00 - 7:30 pm

Call 780-5457 or email: [wvbinz.bb@gmail.com](mailto:wvbinz.bb@gmail.com)





*Rocco giving Radar a kiss!*



*Dinner Time*



*Rocco and Roxy playing tug o war*



*True Love! Jasmine and Pumpkin Rice*



*Nani loves living on the North Shore!*



*In Memory of Makoa*






**North Shore Food Bank Feeds our Pets in Need**  
 Donations of pet food can be dropped off at the North Shore News office.  
 For info: 637-3138  
 northshorefoodbank@gmail.com

# \*CRAFT FAIR\*

Saturday, October 21, 2017  
 9:00 a.m. to 2:00 p.m.

**Come and join us at our annual craft fair!!! Some of the items for sale are:**

- Jewelry, baby clothing & accessories, and other handmade crafts
- Essential oils, skincare, health & wellness products and spinal screenings
- Bento, sushi, baked goods, fruit preserves, and much more!

**HALEIWA JODO MISSION**  
 66-279A Haleiwa Road  
 Phone: 637-4382  
 (Opposite end of Alii Beach Park from the Haleiwa Boat Harbor)

☆☆☆☆☆☆☆☆☆☆☆☆☆☆☆☆☆☆  
 ☆ Interested in selling your craft items? ☆  
 ☆ Please call 637-4382 or email Melanie ☆  
 ☆ at [haleiwajodominionya@gmail.com](mailto:haleiwajodominionya@gmail.com) ☆  
 ☆ for more information. ☆  
 ☆☆☆☆☆☆☆☆☆☆☆☆☆☆☆☆☆☆☆

## North Shore Sports Therapy

(808) 778-8443 (808) 304-5776



**Massage Therapy For Champions!**

**Haleiwa Evangelical Mission International**

Come and join us  
 Sunday's at Waialua  
 Elementary School Cafeteria

Sunday School at 9:00 am  
 Worship Services at 10:00 am

For Prayer  
 Call 637-4567

Blessed to be A Blessing

**"Children's Church"**




Chloe & Kaiipo



## Polynesian Treasures

*Hawaii's largest selection of Polynesian handicrafts and Hawaiian inspired gifts.*

North Shore Marketplace \* Haleiwa, Hawaii  
 Open daily from 10 am \* (808) 637-1288



Little & her Daddy LeeE





# CLASSIFIEDS

The North Shore News is published every other Wednesday and mailed free of charge to all North Shore homes and businesses. Extra copies may be obtained at our office.

**PRESS RELEASE POLICY:** Submit press releases in person, mail or email to Editor, North Shore News, 66-437 Kam. Hwy., Suite 210, Haleiwa, HI 96712. Please type your releases and keep them shorter than 200 words unless they are of an unusual news interest. Releases should be viable news stories and are published on a **space available basis only**, with priority given to those received in our office first. You may attach photos. We are not responsible for the return of any photos. All materials are submitted at owner's risk. We reserve the right to edit and/or refuse all submissions including advertising.

**EDITORIAL POLICY:** We welcome articles and letters from our readers. Letters to the Editor are published on a space available basis only and preference is given to shortness of length, and quality of content. We prefer to run not more than one letter, per person, per 6 month period. Letters subject to edit.

Views expressed by our contributing writers and advertisers do not necessarily reflect the view of the management and staff of the North Shore News. All rights reserved. Reproduction in whole or part without permission is prohibited. © 2017.

**Editor & Classifieds**

Linda Seyler

**Typography**

Downtown General Store

**Contributing Writers**

Tom Jacobs

Betty Depolito

Naty Hopewell

City Councilman Ernie Martin

State Representative Lauren Matsumoto

Senator Gil Riviere

Malia K. Evans

Blake McElheny

**Photography**

Banzai Productions



Please recycle this newspaper.

**SERVICES**

**SHORE ELECTRICAL SERVICE**  
New Const-Remodels  
638-0049 / Lic#C20777

**Computer Problems?**  
I can fix any MAC or PC.  
Chris 371-3089

**Andres Plumbing**  
All your plumbing needs  
808-256-7337 Lic#C24500

**North Shore Pumping**  
Septic and Cesspool Services  
Clifford 638-0900 • 291-5099

**Carpentry & Painting Services**  
Repairs/Remodeling,  
Termite Rot, Doors, Cabinets,  
Countertops, etc.  
Reasonable Rates 271-6584

**Green Gypsy Thrift Shop**  
Waiialua—(808) 366-4000  
Next to Paalaa Kai Bakery

**Dog/Cat Nail Trimming**  
At your home—only \$20.00  
Call 637-5395

**Waihuena Farms**  
CSA, EGGS, yoga, tours  
Farmstand Mondays 2-5:30  
Across from Pipeline  
Mele 551-8132

**North Shore Car Rentals**  
Low cost rental cars.  
Rates are low by providing slightly older cars with a "local" vibe to them, don't be fooled. All vehicles are well maintained and safety inspected. please visit northshorecarrentals.com or call (808) 260-4960.

**Holoholo Screens**

Mobile Screen Service  
New Screen Doors • Window Screens • Porch Enclosures • Window Replacement/Repair  
Free Estimates 783-8764

**Paumalu Electric Inc.**  
C 18074

Residential & Commercial  
New Installation & Repairs  
Renovations. Remodels  
Electric Meter Replacements  
Dave Hancock 638-9054

**Hawaii Tree Co.**  
Trimming & Removal  
Professional-Reliable  
Free Estimates  
462-2749

**LEARN TO SWIM**  
AT THE  
**HAWAII SWIM SCHOOL**  
ON THE NORTH SHORE  
Developing swimmers since 1982  
Haleiwa Rd. at Smiley Place  
637-4863

**Radiant Skin Care & Waxing**  
Aynjul Benigno  
Licensed Esthetician  
Call or Text 808-222-8124  
radiantskincaresandwaxing.com  
66-935 Kaukonahua Rd.,  
Waiialua

**Massage Therapy**  
Specializing in Swedish relaxation, Sports Massage  
Deep Tissue—Gift Certificates  
25 yrs licensed experience  
MAT 8865  
Call Allen 638-0346

**Why Knott Florist and Lei Stand**

Now Open  
Lei, Arrangements, Bouquets,  
Corsages, Orchids, Succulents,  
Tropical and more.  
Waiialua Shopping Center  
808-637-9380

**BIKRAM YOGA**

*BUILD STRENGTH,  
FLEXIBILITY & BALANCE*  
BEGINNERS TO ADVANCED  
Please call for class schedule  
**637-5700**

**HARVEY'S TOWING LLC**

24 hr Towing Service  
Lockouts, Jumpstarts &  
Recovery. Specializing in  
opening locked car doors.  
Call anytime 478-0333

**Your Clean Home**  
**Vacation/Residential**  
**Home Cleaning**  
Affordable • Reliable  
• Green Cleaning  
**For Free Estimate**  
Call 364-6089

**BOBBY'S BODIES**  
Tuesday evenings at 5:00 p.m.  
• Body Toning  
• Cardio Pump/Fat Burner  
For more info: call Bobby, owner of  
BOBBY'S BODIES at 637-4150

**ANGELS PLUMBING**  
Repairs  
Remodeling  
Renovation  
**638-7878**  
Lic. #C12004



**Aloha Computer**  
PC/MAC Repair/Virus Removal  
Fax/Copy/Internet Access  
Located next to Paalaa Kai Bakery  
Open M-S, 10-4.  
372-2667 or 237-4558



Like us on Facebook:  
[Facebook.com/NSNewsHaleiwa](https://www.facebook.com/NSNewsHaleiwa)

**HOW TO CONTACT THE NORTH SHORE NEWS**

Letters to the Editor, and other items submitted for publication consideration may be sent to us via:

MAIL: 66-437 Kamehameha Hwy., Suite 210, Hale'iwa, HI 96712

E-MAIL: [NShoreNews@aol.com](mailto:NShoreNews@aol.com)

PHONE: (808) 637-3138

Office Hours: Monday – Friday 10 a.m.-3:30 p.m.

[www.northshorenews.com](http://www.northshorenews.com)



# CLASSIFIED ADS

**Next Issue - Oct. 25, 2017**  
**Deadline Date - Oct. 13, 2017**

**FREE ADS**  
**Garage & Yard Sales, Reunions, Lost & Found.**  
Email ad to:  
[NShoreNews@aol.com](mailto:NShoreNews@aol.com)

**BUSINESS SERVICES CENTER**  
Fast & Convenient Copy, Fax, Scan, Computer/Internet, Laminate, & More  
  
**Across from the Haleiwa Post Office**  
**637-4558 • [gonorthshore.org](http://gonorthshore.org)**  
**#gonorthshore**

**Waialua High & Intermediate is a Pet-Friendly Emergency Shelter**

**Classified Ad Rates**  
3 lines (min.) \$18.89  
4 lines \$25.13  
5 lines \$32.45  
1" Box Ad \$41.88  
(27 characters in each line)  
Include your contact information.  
*\*Ads can be dropped off in mail slot, mailed, or emailed. Pay by check payable to: North Shore News or credit card by phone order.*  
We reserve the right to refuse any advertisement with a full refund.  
North Shore News • 66-437 Kam. Hwy., Suite 210, Haleiwa, HI 96712  
• (808) 637-3138 • [NShoreNews@aol.com](mailto:NShoreNews@aol.com)

  
**Marianne Abrigo, Properties**  
Specializing in - North Shore Real Estate  
Ask for our list of available properties and/or a free market analysis.  
**Marianne M. Abrigo**  
"Realtor since 1974"  
**Office 637-3511**  
**Fax 637-0777**  
**Email [mabrigo222@aol.com](mailto:mabrigo222@aol.com)**

**HELP WANTED**  
Housekeeper  
Beachfront Estate  
16/hrs per week  
637-0808

**NORTH SHORE SURF SHOP ALOHA AMBASSADORS NEEDED!**  
NOW HIRING! Sales Staff and Manager Positions-Hard Working and Friendly-Japanese, Korean, Chinese Speakers are a PLUS-COME JOIN OUR OHANA! CALL 637-5002 NOW!  
Apply in Store  
66-150 Kam Hwy, Haleiwa.

**Retail Sales Surf & Sea**  
Hawaii's Ocean Sports Headquarters is always looking for hard working, energetic people to become a part of our sales team. Good pay, bonus, benefits. Japanese speaking a plus. Ocean sports experience and dive instructor wanted. Please contact [surfntsea@surfntsea.com](mailto:surfntsea@surfntsea.com) for details.  
Apply in person daily 9am-7pm  
62-595 Kam. Hwy., Haleiwa

**Tini Manini - Part time sales associate wanted!**  
Experienced preferred but not mandatory. Located in North Shore Market Place. Please apply in person or email resume 808-637-8464, [tinimaninihaleiwa@gmail.com](mailto:tinimaninihaleiwa@gmail.com)

**Matsumoto Shave Ice**  
Now Hiring!  
Apply in person daily  
9a-4p  
808-637-4827

**FOR RENT**  
**Large Fully Furnished Studio**  
Privately Gated Estate in Pupuoka  
Full Granite Kitchen, Refrigerator w/ Icemaker  
Full Marble Bath w/ Marble Shower  
Large Living Room  
Landscape Maint. Included  
\$1,695/month  
Call 838-1202

**TABLES & CHAIRS**  
**780-8037**

## MISCELLANEOUS

**FOR A CURE**  
Drop off your recyclables on the last Sunday of each month! 66-345 Haleiwa Road, Haleiwa, HI 96712  
Schedule a pick up: [saltlady808@gmail.com](mailto:saltlady808@gmail.com)  
Proceeds to benefit the Susan G Komen 3 Day Walk for a Cure Team Six at Sixty Visit: [www.the3day.org](http://www.the3day.org) to find out more about how you can help support me and other breast cancer survivors and co-survivors.

**Howloween Boonanza**  
Aloha Stadium  
10-2pm FREE  
Sunday, October 22  
Costume contest and parade, pet business vendors and activities.  
Info at [kampk9hawaii.com](http://kampk9hawaii.com)

**Pet Walk**  
Sunday, October 29  
Magic Island, 8:30am to register:  
[HawaiianHumane.org/PetWalk](http://HawaiianHumane.org/PetWalk)

**NOAA Stranded, Entangled Injured Sea Turtles**  
(808) 725-5730

**For Advertising Rates**  
Call 637-3138 or go to [www.northshorenews.com](http://www.northshorenews.com)

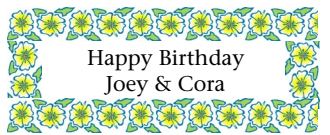
Would you like to get the North Shore News via email in color! Just send your email address to us at: [NshoreNews@aol.com](mailto:NshoreNews@aol.com) and you get the NSN online, free every two weeks!

Parkinson's Group Meeting  
Group meets at the Waialua United Church of Christ on the 1st Saturday of every month. Friends & Family Welcome  
Next meeting November 4 @10am Abel 253-9541

**OFF da ISLAND**  
Are you leaving Oahu on vacation or business? Do you live on a neighbor island, the mainland or foreign country and subscribe to the North Shore News? Try send us a photo of someone in front of a sign or landmark holding a copy of the NSN. Email your photo along with the person or persons' name, community of residence, telephone number and photo location to: [NShoreNews@aol.com](mailto:NShoreNews@aol.com).

**North Shore Food Bank**  
Food bag distribution  
Wednesdays at Haleiwa  
Gym across from  
Post Office  
10am-12pm

**PERMITS**  
Camping (808) 587-0109  
Hiking (808) 587-0166



**Congratulations!**  
Kevin & Kelly Senn on your new baby girl on the way.  
Much Love from the Conte's

**Wild Bird Rehab Haven**  
**Emergency Care, Support & Advice for Birds**  
808-447-9274  
24/7 Helpline

**Premier Benefit Consultants**  
Julie Agbayani-Hall  
808-343-2047  
Leilani Soliven 808-478-1137  
We provide free, no obligation consultation to find the best plan to fit your healthcare needs



Like the North Shore Food Bank on Facebook:  
[Facebook.com/Haleiwa Food Bank](https://www.facebook.com/HaleiwaFoodBank)



# **Local Vendors 808**

Proudly Presents Our

## **2017 North Shore Pop Up Event**

**Saturday, October 14, 2017  
2 p.m. - 7 p.m.**

**On the lawn of the Waialua Community  
Association (Historic Haleiwa Gym)  
66-434 Kamehameha Hwy  
(across from the Haleiwa Post Office)**

- Norwex • Usborne • Lularoe
- Lip Sense • Makeup Eraser
- colorsSTREET and many more...

Check out our Facebook at Local Vendors 808

*Come and join us and get some  
early holiday shopping done!*