



**“E Ala Na Moku Kai Liloloa”**

In This Issue:

**Save Our Hale’iwa Ag Lands!**  
Page 4

**Operation: Backpack**  
Page 9

**Ali’i Beach Access Mats Installation**  
Page 10

**Lili’uokalani Protestant Church History**  
Page 16



NORTH SHORE NEWS August 2, 2017 VOLUME 34, NUMBER 14



Operation: Backpack- Emily, Ani, Kandice. Photo: NSN

**Mahalo from Operation: Backpack!**

Mahalo to all our donors and sponsors for your generous support of our 2017 Operation: Backpack campaign. We were able to distribute over 200 new backpacks loaded with school supplies to island keiki

and teens on Oahu’s North Shore. It was our privilege to distribute the backpacks on Saturday, July 22 at the Operation: Backpack “Back to School Party” at Haleiwa Beach Park. We could not have done it

alone, it was a team effort with tremendous community support as well as contributions from businesses and families on the mainland. See the students smiles on page 9.

PRE-SORTED STANDARD U.S. POSTAGE PAID Honolulu, Hawaii Permit No. 1479	Hale’iwa, HI 96712 66-437 Kamehameha Hwy., Suite 210
--	---

PROUDLY PUBLISHED ON THE  
**North Shore of Oahu**  
Home of  
**Rajanee Thai**



## OFF da Island in Las Vegas, Nevada

Robbie, Kyra, Ciana, Nautica and Kyrie Cubi of Pupukea traveled to Las Vegas in November 2016 for the Softball Winter Classic Tournament 10U Division. Ciana Cubi is a 3rd baseman who plays for the 4th place Crush Orange Softball Team. The Cubi family then traveled to Mt. Charleston for some fun in the snow. Nautica Cubi is holding the North Shore News as they thought about the warm weather back on Oahu's beautiful North Shore. For more information on the OFF da Island campaign turn to page 23.

66-037 Kam. Hwy., Ste. 3  
Haleiwa, next to Growing Keiki

### Saccoccio & Lopez

ATTORNEYS AT LAW  
*Serving Haleiwa since 1984*

*Bankruptcy  
Personal Injury • Criminal Law  
Landlord/Tenant  
Traffic Offenses • DUI*

**Family Law**  
*Adoption • Custody • Divorce  
Paternity • Guardianship  
Deeds, and Wills*

Notary Public

# 637-7611

VISA/MC Accepted

*Paul & Nita*

## Donate to your Friends

### The Friends of the Library Kahuku (FOLK)

Is seeking gently used books, CD's, DVD's, and records for their ongoing book sale at Kahuku Library. Items can be dropped off at Kahuku Library, located at 56-490 Kamehameha Hwy (on the Kahuku High and Intermediate School campus).

For more information please call the library at:  
293-8935



## The Halé'iwa Family Dental Center, Ltd.



now offering the  
**ORAL B GENIUS TOOTHBRUSH**  
at a **BLOWOUT PRICE**

- \$77 after \$20 rebate—your price is lower than our cost
- Proven to be the best toothbrush
- Bluetooth capable with your smart phone
- Package includes: Genius toothbrush, 4 brush heads, toothpaste, mouthwash & floss
- Offered at this price to promote dental health. Do not have to be our patient to take advantage of this incredible deal.
- Children's bundle available for \$37

Provided by Dr. Todd Okazaki and Staff

Conveniently located behind First Hawaiian Bank in Historic Halé'iwa Town  
Call 637-9652 for information



5<sup>th</sup> Annual  
**SUMMER CONCERT SERIES**  
HO'I HOU MAI I WAIMEA  
RETURN TO THE VALLEY

**Featuring Weldon Kekauoha,  
Kapena, and Many More!**

**Saturday August 26, 3pm on the Main Lawn**

Join us for the final show in our annual series of standout local artists and hula performers! Presale tickets available exclusively at [waimeavalley.net](http://waimeavalley.net)



**Moon Walk and Dinner Buffet  
by Ke Nui Kitchen**

**Saturday August 5 and Sunday September 3;  
6pm Dinner, 8 - 9pm Moon Walk**

Experience the Valley at night! Join us for a special dinner buffet catered by Ke Nui Kitchen, followed by a moonlit walk to the waterfall



**Family Days at the Valley**

**Kama'aina Keiki Wednesdays and  
Lā 'Ohana Sundays (3<sup>rd</sup> Sunday Every Month)**

Kama'aina keiki 12 and under enjoy free admission every Wednesday! Bring the entire family for a fun-filled day of Hawaiian activities, games, and much more for all ages



**Weekly Hale'iwa Farmers' Market**

**Thursdays 2 - 7pm at the Pikake Pavilion**

Join us every Thursday, rain or shine, at this award-winning weekly market featuring fresh produce, local vendors, arts and crafts, and live music



**WAIMEA VALLEY**  
HI'IPAKA LLC

Waterfall, Botanical Gardens, & Cultural Activities  
On the North Shore Across from Waimea Bay  
Open 7 Days a Week, 9am - 5pm  
Call: (808) 638-7766

WHERE HAWAII COMES ALIVE

[WAIMEAVALLEY.NET](http://WAIMEAVALLEY.NET)

# SAVE OUR HALE'IWA AG LANDS!

Save our precious lo'i from developers

## IMPORTANT

**City Council Zoning & Housing Committee Meeting  
Wednesday, August 2 @ Waialua Community Association  
at 7 p.m.**

We need everyone to come and show the committee we do not want this project in Hale'iwa. Share with your friends and family and let's get at least 200 people there on August 2!

- SAVE OUR Natural springs running under the property, close to the surface
- SAVE OUR 'Aina from injection system for waste water
- SAVE OUR Land has been in ag for many, many years, ag going on around it

### SAVE US FROM

- Houses are not affordable—talking lots only still have to build the house
- Who will be buying? Will they be first homes or second vacation homes?
- Possible proliferation of illegal vacation rental units in Hale'iwa
- More traffic in Hale'iwa

The Friends of Waialua  
Bandstand in the Park present

**The HVYW8TS**  
A Local Hawaiian Band

**4 PM - 5 PM**  
**Waialua Bandstand**  
**Sunday,**  
**August 6, 2017**

Here's your chance to  
enjoy great music!

See you there!

[www.waialuabandstand.com](http://www.waialuabandstand.com)

**Sundance Spas** of HAWAII  
3140 Koapaka St. Honolulu  
833-6046



**NO PHONES NO TV**  
**NO COMPUTERS!**

Just quality time with loved ones.  
Enjoy real **family therapy** with a  
Sundance Spa on your lanai!



**Council Chair Emeritus  
Ernie Martin**

**Serving You in District 2**

**The Time has Come to Build a Canoe Halau on the North Shore**

For over twenty years the North Shore community has advocated for a canoe halau. During that time, reports have been done on Hale'iwa Regional Park and there has been finding of no significant impact for the projects that were proposed.

I have once again appropriated funds for this project in the fiscal year 2018 budget. The \$1.2 million included in the budget would be for canoe halau at various parks, which include Hale'iwa Beach Park Mauka, Kahaluu Beach Park and Heeia Kea Valley Nature Park.

The Mayor's Administration have said that they stand by the Department of Design and Construction's findings that a Hale'iwa Canoe Halau is not feasible due to the significant pedestrian and vehicular traffic safety concerns resulting from the location on the mauka side of Kamehameha Highway. In addition, the flood zone designation makes the construction cost prohibitive and infeasible.

The vehicular and pedestrian traffic would most likely not have a significant impact since the proposed canoe halau is located in an area that has been historically utilized for canoe and canoe trailer storage as well as for parking.

As for the flooding issue, the canoe halau at Maunalua Bay Beach Park, Keehi Lagoon Beach Park and Makaha Beach Park were constructed in a flood zone and all three halau were found to have no significant impact.

The Hale'iwa Canoe Halau would provide a much-needed secure storage area for racing canoe. The North Shore services over 350 paddlers from Mililani to Laie and is home to the Manu O Ke Kai Canoe Club and the Hale'iwa Outrigger Canoe Club. A canoe halau would be a beneficial addition to our community.

I encourage the community to step forward and advocate to the administration to initiate this project as soon as possible because the time has come to build a canoe halau on the North Shore.

**Waialua Hongwanji Mission  
Bon Dance 7 p.m. with service at 6 p.m.  
Saturday, August 5, 2017  
67-313 Kealohanui Street, Waialua**

**Chester Hoapili Sr.**

Born in Honolulu, Hawaii, long time resident of the North Shore. A family man with a larger than life heart, and a smile that would brighten or warm up a gloomy day.

Chester passed June 27th, 2017, surrounded by family and friends.

Services will be held at Ali'i Beach Park on Saturday, August 5, 2017 at 4 p.m. No wreaths please as ashes will be scattered after services.

**ALAKA'I  
RAINGUTTERS & SUPPLIES**  
C-31335  
**(808) 228-4810**

- Free Estimates
- Seamless Copper and Aluminum
- Various Colors
- 5", 6", & 7" Commercial Gutters
- On-site Fabrication
- Custom Gutters

Glen Fujishige Jr.  
Owner

P.O. Box 933  
Waialua, HI 96791  
alakairaingutters.com

Read about us on **YELP!**

*"Da Best"*

**OPEN DAILY  
7 DAYS A WEEK**

**Paalaa Kai Bakery  
Since 1970**

**HOME OF THE  
SNOW PUFFY**

*Sada's  
Malassada*

[www.pkbsweets.com](http://www.pkbsweets.com)



## Ask the Doctor

**Jason Hughes**  
Chief Medical Officer  
Kahuku Medical Center

**Q:** *How do I know if it's strep throat or just a sore throat?*

This is a question many parents face quite often. You may be dealing with strep throat if there is an abrupt onset of symptoms such as sore throat, fever, body aches and loss of appetite. Most causes of sore throats are viral, but strep throat is a bacterial infection so a doctor will usually do a swab or send a culture to the lab to confirm diagnosis. Results are usually available in one to two days.

In addition to pain and discomfort caused by the inflammation of the tonsils, patients with strep throat can develop a rash or lumps in the front of the neck caused by swollen lymph nodes. Complications of strep throat are rare, however if left untreated, strep throat can lead to something called rheumatic fever which may include painful joints or damage to the valves of the heart. If it becomes a recurring problem, consider the option of surgery to remove the tonsils.

A reminder: Strep throat is not seasonal. It can happen at any time. It can impact people of any age, however is most common in school age children and young adults. Without antibiotic treatment, it is also highly contagious. To reduce the risk of spreading be sure to wash your hands with either soap and water or hand sanitizer and cover your coughs or sneezes.

After 24 hours of treatment with antibiotics, it is safe for your child to return to school and be around other people. Give your child or yourself enough time to recover. Drink lots of fluids, rest, take your antibiotics and use ibuprofen (Advil) or acetaminophen (Tylenol) for pain. Avoid aspirin as it may be harmful if used for strep throat.

If symptoms don't improve after 48 hours of antibiotic treatment call your physician for a followup.

*Do you have a medical question?*  
Email [askthedoctor@kmc-hi.org](mailto:askthedoctor@kmc-hi.org)

## Experience the Cook Islands at Polynesian Cultural Center

Special Showcase Featuring Authentic Village and Cultural Presentations, July 17–August 24

### WHAT

Kia Orana! The Polynesian Cultural Center is presenting a special showcase of the people and culture of the Cook Islands from July 17 to August 24 in support of the Cook Islands Ministry of Cultural Development.

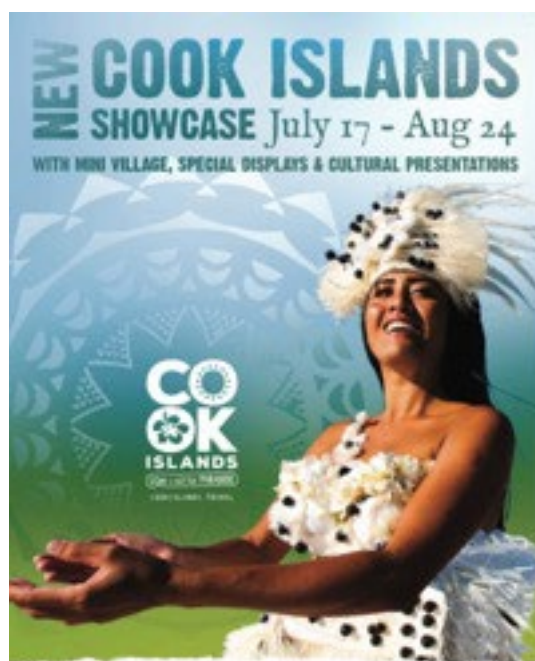
Guests will experience an authentic Cook Islands village, and enjoy special art displays and unique cultural presentations by a team of 17 performers from the Cook Islands National Arts Theatre.

The Cook Islands comprise 15 islands over a vast area of the South Pacific. The main island, Rarotonga, is located 3,000 miles from Honolulu.

The Cook Islands' culture is expressed through art, including music, tattoos, woodcarvings, weavings, paintings and cloth designs. The call of their drums and grace of their dance and songs at the Polynesian Cultural Center will take guests on a journey through the culture and history of the Cook Islands.

### WHEN

July 17–August 24 (Daily except Sundays)  
12:00 p.m.–5:00 p.m.



*We're bringing the South Pacific to the North Shore. This summer, come and experience the magic of the Cook Islands. This can be our new discovery with the purchase of a general admission.*

*Plus, sometimes you can join our free Ohana Club for the best deals at the center. Upgrade to a Kapa'eha Annual Pass and get free general admission, morning show and more.*

**Polynesian Cultural Center**  
1000 Ala Moana Blvd.  
Honolulu, HI 96813  
PCCPhone.com • 808-243-0000

# Talking Story with Tom Jacobs

## The Little Hospital That Could, Part 2

I wrote in the last issue about a tour through Wahiawa General Hospital, and the good things happening there. The other day I got a call from the office of State Representative Marcus Oshiro, who represents Wahiawa and Central Oahu. Would I want to meet with Oshiro and with David Seeholzer, board chairman for the hospital?

Would I? You bet! We met in the hospital's Board Room a few days later. Seeholzer, a retired government and aerospace executive, looks and acts every inch a board chair; competent and in charge. Representative Oshiro seems, like our three North Shore state reps, Sean Quinlan, Lauren Matsumoto, and Senator Gil Riviere, to be a civil servant who emphasizes the "servant" part. Certainly he has spent long hours working to solve the hospital's chronic fiscal shortfall.

I wanted to learn about the hospital's financial picture. Seeholzer had said at the hospital's open house days before that he had never felt as optimistic about the fiscal prospects. Why did he feel that way? "To begin with. We have signed a three-year contract with Community Hospital Corporation of Plano, Texas to manage the hospital. These guys have a great record of 'saving' financially distressed rural hospitals, big or small ones. In the short period of time they've been on board we've already seen significant fiscal improvement. They've brought a new CEO, Jim Phillippe, and new CFO, Pamela Gallagher, both out of retirement from the mainland. We've instituted 'CostCo style' bulk purchasing strategies to save money. And we've fundamentally changed our medical care and business strategy to de-emphasize an acute-care focus, to become more flexible, more 'reconfigurable.'"

Representative Oshiro spoke up. "The legislature has allocated almost one-million dollars a year over the next three years to make up fiscal shortfalls. That should give the hospital the time it needs to become healthy financially. I'm concerned, though, because this allocation is 'grant-in-aid' money, which can be more easily re-allocated."

"The legislature can take it back, in other words?" I asked.

"Exactly."

"But there are other reasons to be optimistic," David Seeholzer said. "As part of the Koa Ridge development, Castle and Cook has donated twenty-eight acres across from CostCo that we can use in the future to build additional medical facilities there

to supplement the hospital's capability."

"So you two, along with the new management team and hospital staff, plan a fresh start," I said.

Both men nodded. "I'm willing to drop everything else I'm doing to pursue the hospital's success," Seeholzer said. Oshiro smiled in agreement.

I thanked these two optimistic, energetic men and left the hospital to begin the long drive down the hill to the North Shore. The day seemed a little bit brighter, the sun felt a little bit warmer. Wahiawa Hospital was beginning to look a little bit more like "The Little Hospital That Could."



Wahiawa General Hospital



Only at Paalaa Kai Bakery  
Don't Forget.....

Our popular MAHALO card will expire on August 31, 2017.

Avoid the last minute rush and collect your discounts early!



Win a dozen **SNOW PUFFIES** or a dozen **ASSORTED PASTRIES INSTANTLY!**

PLAY OUR LUCKY SECONDS GAME! LOOK AT THE SECONDS DIGITS ON YOUR RECEIPT AND IF THE SECONDS DIGITS MATCH YOUR BIRTHDATE, YOU INSTANTLY WIN!



**EXAMPLE: 10:25:13**

Limit one win per person per day. Purchase not necessary. Must be 18 years old to play Lucky Seconds. This contest runs until August 31, 2017.

VISIT US @  
www.pkbsweets.com



**Representative  
Lauren  
Matsumoto  
Serving You in District 45**

Aloha Friends, Family, and Neighbors!

The 2017-2018 school year is starting in only a matter of days and I wanted to share some important dates and events happening at the schools in District 45. At Waialua High & Intermediate School, August 7th is the start date for all incoming 7th graders as well as a ribbon cutting ceremony for the grand opening of the new intermediate school building. The following day August 8th will be the start date for 8th-12th graders. To find out more information about Waialua High & Intermediate School call (808) 637-8200 or visit <http://www.whis.k12.hi.us>. At Waialua Elementary, August 7th will be a professional development day for teachers, therefore no school will take place. On August 8th all grades will start school and there will be orientation from August 8th-August 11th for both Kindergarten and Pre-K students. To find out more information about Waialua Elementary call (808) 637-8228 or visit <http://www.waialuael.k12.hi.us/Site/Welcome.html>.

While it is wonderful to give children the opportunity for a more relaxed schedule during the summer, the first week in August is the time to gradually ease back into a routine to avoid an abrupt transition when school starts. It is important when preparing children for the first day of school to plan ahead. Here are some helpful tips to make the back to school transition for your children as easy as possible.

- **Talk to your Children:** It's never too early to start talking with and listening to your children about the first day of school. Ask them what they think school will be like and see if they have any specific concerns.

- **Bedtime Schedule:** Start a bedtime schedule one week in advance of school so that your children get at least 10 hours of sleep at night.

- **Practice your new routine:** During this same week stage a morning dry run to see how long it takes you and your children to get out the door in the morning. It will not only help you predict how early you and your children need to get up, but your children will benefit from learning what to expect.

- **Check-in with the School:** If your children's school is hosting an orientation, take advantage of it. Often children are worried that they won't know how to get to the bathroom or where to eat lunch.

- **Set up school zones and expectations:** Establish a location for backpacks and distraction-free homework zones at home. Setup homework and

study times to help manage expectations and establish good routines.

- **Choose a Buddy:** If possible, find out the names of other children in your children's class. Find another child in the neighborhood with whom your son or daughter can walk to school with for the first day of school and the rest of the year.

A little preparation before the big day can go a long way in easing your children's transition back to school. It's important for parents to remember that first day jitters are completely normal. Like with many things, their worries are likely related to the fear of the unknown. Remember children take their cue from their parents. As a parent it is important to keep a calm and supportive demeanor.

As always, please feel free to contact me if you have questions or concerns about any happenings in our community. Call me at (808) 586-9490, email [RepMatsumoto@Capitol.Hawaii.gov](mailto:RepMatsumoto@Capitol.Hawaii.gov), or visit [RepMatsumoto.com](http://RepMatsumoto.com).

*Waialua Elementary is seeking volunteers to serve as crossing guards in the morning and/or afternoon on school days at the intersection of Goodale and Waialua Beach Road. Volunteers would need to be trained by HPD to serve. A background check would also be part of the process. The morning time frame would be from 7:20 to 8:00 a.m. The afternoon, from 2:10 to 2:30 p.m. each day, except Wednesdays (12:30 to 12:50 p.m.).*

*If you are interested in supporting the safety of Waialua's school children, please call our office at 637-8228.*

**Now Open**  
at the Haleiwa Town Center,  
next to Luibuenos



**Eyeland Style Optical**

*See and Be Seen*

**(808) 892 1428**

**Dr. Janine Sherry**

*50% OFF SELECTED FRAMES*

*Accepting Insurance Plans: HMSA, HMSA QUEST,  
VSP, UHA, and EYEMED*

**Eyeglasses**

**Eye Exams**

**Sunglasses**



# Mahalo...from 2017 Operation: Backpack!



Mahalo Operation: Backpack volunteers!  
Photos: NSN & Anuhea Seyler





## North Shore Chamber of Commerce News

### Ali'i Beach Access Mats Installation, August 12, 8 a.m.

The North Shore Chamber of Commerce is pleased to announce that the installation of new handicapped access beach mats at Ali'i Beach Park will be done before the Menehune Surf Competition in October 2017. The Chamber was also responsible for the November 2016 beach access project at Ehukai Beach and the world-famous Pipeline surf break. The mats at Ali'i Beach Park will start at the makai side of the Surf Center and go to the bench and table under the tree at the start of the beach.

The project at Ali'i Beach, like the previous one at Pipeline, was spearheaded by Bill Quinlan and Ed Korybski at the North Shore Chamber of Commerce "NSCOC," along with Bill Martin, owner of the Island X gift shop. Ultimately, public and private support in many forms are helping to make handicapped access to our beaches a reality.

Generous funds to pay for the mats came from First Hawaiian Bank "FHB" (courtesy of NSCOC board member, Sarah Cadiz, Assistant Vice-President/Branch Manager at FHB Haleiwa), Susan Smith of McDonald's Haleiwa, Jodi Wilmott of the World Surf League, and the D'Ascoli family.

Department of Parks and Recreation Director Michele Nekota and Windward District Manager Miles Hazama have strongly supported the mats projects and expedited the necessary approvals.

Also, formal public support came from the Sunset Beach Community Association and the North Shore Neighborhood Board.

Bill Martin lobbied hard to enlist both public and private support. He describes the beach mats projects as "another example of how community groups can partner with local government to improve our recreational areas." He adds, "public and private cooperation has made a difference in these times of tight budgets... especially now with the rail issue."

The planned date for installation of the mats at Ali'i Beach is Saturday, August 12, 8am. Volunteer members from Access Surf, a non-profit helping people with disabilities, and other community members are expected to return on installation day as they did last November at Pipeline when at least three dozen volunteers of all ages pitched in to lay down hard plastic matting in a line across the sand, while having a good time.

The "usual suspects" show up and put in the work to make the North Shore a better place to live.

Bill Martin further details, "these access mats will not extend all the way to the water but will go up to the high tide mark so those who are mobility challenged can have a better quality beach experience." All volunteers willing to help on August 12 will be very welcome.

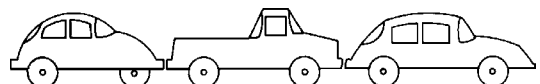


Group photo of volunteers at Ehukai Beach.



Volunteers at Ehukai Beach.

## CAR WASH !



Saturday, August 12, 2017  
9am to 2pm

Waialua Community Assoc. in Hale'iwa

Proceeds to benefit the North Shore Food Bank  
(to volunteer or donate call 637-3138)



*You Are Invited!*

**Sunset Open!**  
 August 10th, 5p.m. - 7:30 p.m.  
 61-1010 Tutu place, Haleiwa, 96712  
 Win an iPad Mini!

**FOR SALE: BRAND NEW LUXURY HOMES**

*The Bluffs at Waimea offers 5 custom homes with Asian mahogany throughout!  
 With SPECTACULAR PANORAMIC OCEAN VIEWS, SPACIOUS GREAT ROOM,  
 GOURMET KITCHEN, GRAND COVERED DECKS AND OPEN LANAIS,  
 they are perfect "Country" homes with Kahala quality but North Shore prices!*

5 Brand New Homes • Custom 3-Bedroom/4 - 4.5 Baths • 3,787 - 4,205 House Area • 7,500 - 10,178 sq. ft. View Lots

Contact The Listing Agents Today!

Ken Chong Realty 808-778-6348 (RB-06954)  
 Sterman Realty 808-638-8600 (RB-11935)



# August Moon Festival Senior Fun Fair

**Craft Sale, Country Market, Health Talks,  
 Entertainment! Great Prizes!**

**Senior Groups Invited!**

Date: Thursday, August 17, 2017

Time: 9:30 a.m. to 12:30 pm

at Helemano Plantation's **Wellness Center**  
 64-1488 Kamehameha Highway in Wahiawa  
 (Next to Dole Plantation)

**Admission is FREE! Reserve your seat.  
 Bento box will be provided.**

To R.S.V.P. or ask questions, please call Yvonne or Rose at **622-3929**



## Kuamo'o Olelo

by  
Malia K. Evans

### Unfolded By the Water Are the Faces Of the Flowers

"Mohala i ka wai ka maka o ka pua. Unfolded by the water are the faces of the flowers." This Hawaiian proverb speaks to the importance of water, as flowers thrive where there is water, and thriving people are found where living conditions are good. (Pukui #2178). We are truly blessed to live in the country, where living conditions are exceptionally good. In traditional times, the Waialua and Ko'olauloa districts were called 'aina momona, bountiful lands, because of the fresh water resources, fertile soils, abundant lo'i kalo (taro fields) and fishponds that beautify our communities.

Yet, as our population exceeds carrying capacity, tourism soars and our infrastructure buckles beneath our feet, developers are eyeing our agricultural lands for housing developments. The Hale'iwa Plantation Village (HPV), a 35-house lot project, which includes a Sewage Treatment Plant, is planned on seven acres of important agricultural land near Kili'oe Place. The developer seeks to rezone agricultural to residential and amend the state land use district boundary from AG to Urban (see Bills 55 & 56 below). The Honolulu Planning Commission voted in April 2017 to oppose the development. The NS Neighborhood Board at a November meeting voted to not support the project. Many community members have expressed legitimate concerns regarding water contamination, loss of important agricultural lands, increased traffic, sewage impacts to marine ecosystems, Quiet Title actions, impacts to lo'i/hasu farmers, and opening the door to further development, among many. The Honolulu City Council will hold a special public hearing on Wednesday, August 2, 2017 at the WCA (across Hale'iwa Post Office) at 7 p.m. to hear community concerns.

Several components of the HPV project are raising red flags with residents, especially concerning water. The HPV draft EA (July 2015) confirms the presence of groundwater beneath the project site. Groundwater is the principal source of our water supply and the two aquifers below the site are described as "Irreplaceable". Adjacent to the project are kalo and hasu farmers, a few on kuleana lands, who depend on access to the freshwater springs. The potential to contaminate and/or cut off access to fresh water is a huge concern as the springs here are connected.

The proposed Underground Sewage Treatment Plant with Injection Wells is another red flag. Ground-

water here is close to the surface and excavation has the potential to contaminate our public water resources. The construction of 2 injection wells, point sources of pollution, is highly problematic. Recent headlines state, "Injection wells fouling Maui bays and reefs" and "County sued over Lahaina injection wells". Research indicates injection wells release nitrogen and other contaminants into ocean water and suffocate reef ecosystems, kill fish with algal blooms and cause infectious diseases. In addition, the developer plans to build the sewage treatment plant next to the 25 acre federally protected wetlands that are home to endangered native bird species.

The HPV project is situated on previous lo'i kalo (wetland taro pond fields) and the low-lying coastal plain floods regularly during mild to moderate rainfall. This is a naturally occurring process where rainwater percolates into the vegetated earth and replenishes our groundwater. The HPV project has nearby residents asking "How do you keep it from flooding without filling it in and pouring more concrete? Who will be responsible for flood damage to neighboring farms and properties?" A portion of the property requires flood insurance, which is very expensive and could be difficult to obtain for vacant land. In addition, flooding events in Hawai'i oftentimes causes the discharge of untreated sewage into the surrounding environment.

As island dwellers, we must internalize that our fresh water, 'aina and natural resources are finite. It is critical that we protect and conserve these important resources today and for those who come after us. Developers who seek to circumvent zoning laws that protect our agricultural lands and quality of life threaten our community. Let us not allow wealthy developers to obscenely line their pockets while we and our descendants get shafted with contaminated drinking water, traffic nightmares, loss of agricultural lands, dead reefs, staph infections, overpopulation, destruction of natural and cultural resources, and potential loss of our sense of place and community. Unfolded by the water are the faces of the flowers. Flowers thrive where there is water, and thriving people are found where living conditions are good. What are you going to do to ensure we continue to have clean water and our community continues to thrive?

Bill 55

[http://www4.honolulu.gov/docushare/dsweb/Get/Document-194362/BILL055\(17\).PDF](http://www4.honolulu.gov/docushare/dsweb/Get/Document-194362/BILL055(17).PDF)

Bill 56

[http://www4.honolulu.gov/docushare/dsweb/Get/Document-194361/BILL056\(17\).PDF](http://www4.honolulu.gov/docushare/dsweb/Get/Document-194361/BILL056(17).PDF)  
Petition <https://www.change.org/p/honolulu-city-council-save-hale-iwa-ag-lands>



Hibah Khan- grand prize winner in "Water is Life" art contest.



## Hukilau Marketplace at Polynesian Cultural Center Features "Storks" Free Movie Night on the Lawn

Guests are also invited to watch a Bird Show by the Bird Guy, Hawaii's well-known bird dude Bruce McGonigal, at the Hukilau Marketplace to see and learn about the most beautiful tropical birds in the

world!

WHEN: Friday, August 4, 2017

6:30 p.m.

7:30 p.m.

Bird Show

Storks



LUKE SWANSON wins air comp at Nationals! Photo By: Swanson Family

**NORTH SHORE**  
Auto & Truck  
Service

---

**808-637-1234**

---

Haleiwa, HI 96712

**North Shore Sports Therapy**  
(808) 778-8443 (808) 304-5776

**Massage Therapy For Champions!**



**Wahiawa General Hospital**  
"Never out of Touch"



**2nd Annual**  
**HERMAN'S**  
**CAR WASH**

Funds to Support our Community Hospital Improvements

WGH services one-third of the island of Oahu  
(Waipio Gentry to Mililani \* Wheeler to Kunia \* Kaena Point to Kahuku)

---

**August 12th 9am - 3pm**

---

128 LEHUA STREET  
WAHIAWA HI 96786  
(Center Street, behind Hospital)

**COST: \$10.00**  
PRE-SALE TICKETS OR ON EVENT DAY

---

**PRE-SALE TICKETS AVAILABLE AT HOSPITAL**

---

DONATIONS GREATLY APPRECIATED  
Checks Payable to:  
Wahiawa Hospital Foundation

COMMUNITY VOLUNTEERS  
NEEDED

---

 Ticket & Volunteer Information  
(808) 621-8411





## North Shore Surfing Wireless Betty Depolito - banzaibetty.com

### HAWAII'S LIFEGUARDS ARE 100 YEARS OLD

The Hawaii Lifeguard Association hosted an appreciation reception for 100 years of lifeguarding in Hawaii recently. Congratulations to all of our lifeguards over the years who watch out for each and every beach goer! Lifeguards are so important in our community. Some of the services they provide include ocean rescue prevention, ocean rescue, emergency medical first response, dispatched mobile patrol, education, and injury prevention programs related to ocean safety.

They are still looking for donations to continue their outreach of education and more. You can find the go fund me page at <https://www.gofundme.com/100lifeguarding>. Mahalo to all of our lifeguards!

### PAKALOHA BIKINIS VOTED BEST BIKINI SHOP

The best bikini store in the islands has made another big move and opened a store in Kailua as of July 1st. Congrats to the shop who makes mix and match bikinis to fit all sizes. They also are big sponsors of Women athletes. Big wave surfer Paige Alms is on the team. Alms is current Big Wave World Champion and Pakaloha will soon be releasing a bikini in her name so watch for that. Pakaloha is built for the barrel! They recently were voted best Bikini store on Maui where they began. Congrats to Julie and the gang at Pakaloha!

### LUKE SWANSON TAKES NSSA NATIONAL JUNIOR AIR COMPETITION

Congrats to Luke Swanson from Hale'iwa Hawaii, he won the air comp at the NSSA National Championship held last month in San Clemente California. Luke is thirteen and has mega sponsors already. Some include Quiksilver, Mokulelel Airlines, Cobian Sandals, Eric Arakawa Surfboards and Surface Sunscreen. After the event he said, "I was super psyched to win the NSSA Junior Air Show. It wasn't necessarily the win I wanted but I am super thankful. Thanks to everyone."

The young surfer has a big career ahead of him! Way to represent the North Shore!

### USA NATIONAL SURFING IN CALIFORNIA

Hawaii's surfers qualified and had some success at the USA Surfing Event in California. The cream of the crop representing Hawaii. The North Shore's Luana Silva came through with a win in the girls 12 and under division, big congrats to her. Hawaii surf-

ers had to qualify for the event through the Hawaii Amateur Surfing Association series in the Islands. The full results follow.

### USA SURFING CHAMPIONSHIP RESULTS

#### BOYS U12:

1. Robbie Goodwin, Massachusetts, 16.56
2. Diego Ferri, Hawaii, 15.03
3. Maikai Burdine, Hawaii, 11.53
4. Kai Martin, Hawaii, 8.10

#### GIRLS U12:

1. Luana Silva, Hawaii, 16.00
2. Ewe Wong, Hawaii, 5.67
3. Sawyer Lindblad, California, 3.83
4. Ava McGowan, Florida, 3.50

#### BOYS U14:

1. Ocean Macedo, Hawaii, 16.77
2. Brodi Sale, Hawaii, 14.63
3. Kade Matson, California, 14.60
4. Jett Schilling, California, 11.20

#### GIRLS U14:

1. Caroline Marks, Florida, 15.90
2. Alyssa Spencer, California, 12.83
3. Samantha Sibley, California, 12.70
4. Kirra Pinkerton, California, 12.13

#### BOYS U16:

1. Crosby Colapinto, California, 15.60
2. Barron Mamiya, Hawaii, 14.33
3. Kade Matson, California, 13.40
4. Robbie McCormick, Florida, 10.27

#### GIRLS U16:

1. Caroline Marks, Florida, 16.27
2. Summer Macedo, Hawaii, 14.24
3. Keala Tomoda-Bannert, Hawaii, 12.50
4. Alyssa Spencer, California, 5.00

#### BOYS U18:

1. John Mel, California, 17.50
2. Noa Mizuno, Hawaii, 15.70
3. Cole Houshmand, California, 14.66
4. Kaulana Apo, Hawaii, 8.73

#### GIRLS U18:

1. Brisa Hennessy, Hawaii, 15.67
2. Caroline Marks, Florida, 15.50
3. Kirra Pinkerton, California, 12.77
4. Samantha Sibley, California, 11.84

# Lili`uokalani Protestant Church History

Naming of Hale`iwa

(Kuokoa, August 11, 1899 p.6 Newsp.)

In an old story printed in 1860 in Honolulu, about this native bird I found that Hale`iwa was named for the iwa bird. The iwa is a bird as large as a turkey. The back part is alike and so was the way they strutted and walked sideways. Some iwa are black, some gray, some white. The beak, wattles, eyes, head, long neck, size of body, length of legs and wings are very much like the male turkey, but its toes are like those of the uwa`u bird.

The iwa does not eat rats, chickens or other things on the plain like the hawk and owl. The iwa eats fish. It flies early in the morning over the surface of the sea to fish and returns to the land at night. In flying it is exactly like the hawk, in soaring and poising aloft but in movement they are not alike. The hawk darts straight ahead but the iwa does not. If an iwa is in the sky, rather low about three or four miles up and it wishes to rise away up, then it drops for about half a mile below the point where it soared and then arose up almost out of sight. In order to drop quickly it folds its wings and spreading it a little, it rises up out of sight in the sky. In movement it rises straight up like the rising of a steeple. The iwa is a beautiful bird in flight. Because of the beauty of its poise aloft, dropping and rising out of sight, it is much admired and hence the saying "The iwa poises aloft in the wind." This is the meaning, the wind hums against the brow of the iwa because of the force of its flight. The cry of the iwa sounds like "Iff" and hence the bird is name iwa. "Iff" is the sound of its cry and iwa it is called. Therefore, it is the iwa who cries "Iff" and "Iff" is the iwa's cry. Because of its skill in fishing it is called the chief of fishing birds.

The iwa is attractive, like the piwai bird. It is a splendid bird to look at. Because of the great height it reaches in flight it is said to be one who goes away up(iu). Therefore, the chiefs were also called iu. The high priests and girls who swear never to marry were also called iu.

175th Anniversary Theme-2007  
Reverend David Kaupu

"E Onipa`a Mau I Ka Hana o Ke Akua"  
Remain steadfast in the work of the Lord.

anniversary scripture

"...e na hoahanau, e kupa`a oukou, me ka naueue ole, me ka ho`omau i ka oukou hana nui ana i ka hana o ka Haku, no ka mea, ua ike no oukou, aole i make hewa ka oukou hana ana ma ka Haku."

I Korineto XV:58

"...my beloved brethren, be steadfast, immovable, always abounding in the work of the Lord, knowing that in the LORD your labor is not in vain." I Corinthians 15:58

Reverend Kaupu also noted that Onipa`a is the Queen's one word motto and Kupa`a(Hawaiian Bible word) have the same meaning..steadfast, hold fast, stand fast, immovable, being anchored, solid foundation. He went on to say: "Besides her deep love for the music of

our land, Liliu's abiding aloha was always reserved for the children, especially for their educational welfare." Liliu's motto of Onipa`a was part of the phrase she spoke on the pursuit of education: "E onipa`a i ka imi o ka naauao"- "Be steadfast in your search for knowledge." Knowing that her people were gradually decreasing their hold on values, traditions, government and population, she proposed to her subjects that their only survival from their malady was to hold fast to Kupuna values by being persistent in their educational pursuits of what's happening to them and around them. If you know about the source of your pilikia(problem), you may know your pilikia and then do something about it.

Reverend Kaupu commented: "The members and friends of Lili`uokalani Protestant Church are to remain steadfast in the faith traditions of our Kupuna. Through our missionary founders, Reverend John and Ursula Emerson, God will help us know that everything we do, when we remain steadfast in our Christian faith, will not be in vain."

On August 4, 2007, Saturday, there was the 175th Anniversary Luau on the grounds of the church: \$17.50(sit-in) \$15(take-out) \$10(children)

In 1832 the first worship service was held at this Waialua Church, now called the Lili`uokalani Protestant Church. Other events: Sept. 15th, Saturday at 3:00pm-175th Anniversary Worship Service; Oct. 13th, Sat. at 9:00-4:00pm-Harvest Festival; Nov. 3rd, Sat. at 6:30pm-North Shore Music Festival; Dec. 21-22nd, Fri./Sat. at 7:00pm-Christmas Cantata)



## Lili`uokalani Protestant Church 41st Annual Benefit Luau

Saturday, August 5, 2017  
1 p.m.-4 p.m.

Please call 637-9364  
Donation: \$25 Dine-in \$20 Take-out





# RED READER FOR LIFE

56-490 Kam. Hwy. #293-8935 M, W, Th: 9 - 5 pm; Tues: 12 - 8 pm; Fri: 9 - 3 pm  
Hawai'i State Public Library System [www.librarieshawaii.org](http://www.librarieshawaii.org)

## Aug 2017

CHECK US OUT ONLINE: Register for library programs online at: [www.librarieshawaii.org](http://www.librarieshawaii.org) check availability on all our **FREE** programs!

All Kahuku Library programs are generously sponsored by our Friends of the Library Kahuku, please support our FOLK.



### Programs and Classes For Keiki to Kapuna

#### Tuesday Night Demos

Missed one of our exciting textile demos, here is your chance to learn about some of the cool things available in our Kahuku Cool Lab.

Come when you can.

#### Button Makers

Tues, Aug 8th  
4:00pm to 7:30pm

(free takeaway while supplies last)



#### Embroidery Machine

Tues, Aug 15th  
4:00pm to 7:30pm

#### Silhouette Cameo

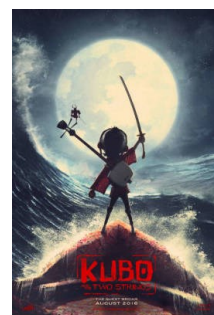
Tues, Aug 22nd  
4:00pm to 7:30pm  
(free takeaway while supplies last)



#### Movie: Kubo and the two strings

Tuesday, Aug 1st  
At 5:30 pm

Rated PG



#### Movie: Batman Movie

Tuesday, Aug 29th  
At 5:30pm

Rated PG

(Craft to follow during Art Club)



#### LIBRARY CLOSED

Friday, Aug 18th



#### Keiki Storytime

Storytime: Fri @10am  
No Storytime Aug 11th

Music & Playtime  
Cancelled for August  
Will resume on Sept 11th

#### Help your Library JOIN the Friends of the Library Kahuku (FOLK)

Forms are available at Kahuku Library Or contact [KCL@librarieshawaii.org](mailto:KCL@librarieshawaii.org) for more information

#### Get your Kahuku Library newsletters and flyers by email

Email us at:

[KCL@librarieshawaii.org](mailto:KCL@librarieshawaii.org) with your email address



Tues. Aug 29th  
6:00pm

Self directed crafting  
Theme: Batman

All ages welcome. Children must be accompanied by a caregiver.



Lego Play  
Weds 2-4pm,

# Serving the North Shore Community



## WAIALUA FEDERAL CREDIT UNION

67-292 GOODALE AVE #A2  
(808) 637-5980  
www.waialuafcu.com

### Visit us today.

# BULLETIN BOARD

Being  
YOU

LAURA CHO-STUTLER, PSYD  
LICENSED CLINICAL PSYCHOLOGIST

66-935 KAUKONAHUA RD  
SUITE 103  
WAIALUA, HI 96791

808.387.6764  
WWW.BEINGYOUHAWAII.COM  
DRCHOSTUTLER@GMAIL.COM



Lisa Sotelo  
Owner/President

(808)349-5900  
(Cell Phone/Text)  
Lisa@kidsintheair.com

Kids In The Air, LLC  
PO Box 893142  
Mililani, HI 96789

For little travelers on big adventures!

**The Lawn Ranger-**  
*We put the law back into your lawn,  
no yard too hard,  
no lawn too far gone...*

**Trees, hedges, hauling,  
multi acre properties.**  
Fully insured, 25 years experience.

258-6439

RAYNA CALARO

TRAVEL AGENT

PHONE: (808) 637-6156  
MOBILE: (808) 590-3326  
EMAIL: RAYNACALARO@HELEMAITRAVEL.COM  
WEBSITE: WWW.HELEMAITRAVEL.COM

66-963 KAMAKAHALA STREET | WAIALUA, HI 96791



**"THE BULLETIN BOARD THAT IS IN EVERYONE'S HOME"**

# BULLETIN BOARD



Featuring the largest selection of certified organic produce on the North Shore.  
 No panic...ours is organic.  
 Open 7 days.  
 Mon.-Sat. 9am-7pm.  
 Sun. 9am-5pm

66-445 Kam. Hwy  
 Haleiwa, Hawaii 96712  
 Next to the Post Office  
 808-637-6729 • 808-637-1922 fax



**DR. PORTER TURNBULL**  
 Chiropractic Orthopedist  
 (808) 638-8740  
 Appointments available Mon.-Sat.  
 (evenings by appointment)

- Industrial accidents & auto injuries
- Sports injuries • Spinal care
- Safe, Effective, and Gentle

## N-C PLUMBING & SUPPLY

Cont. Lic. No. C-8913



- RESIDENTIAL & COMMERCIAL SALES & SERVICE
- CONTRACTING & DESIGN • HOME PLUMBING SERVICE
- PLUMBING FIXTURES, HEATERS • FREE ESTIMATES

Nestor P. Calilao (Owner)      Bus: 637-8662  
 P.O. Box 769                      Res: 638-5157  
 Waialua, HI 96791              Cellular: 372-8718

## BOW WOW BUNGALOWS

Licensed Boarding Kennel

North Shore, Oahu

Reasonable Rates

Ph. 637-2562

*These Dogs Have Fun!*

**Waialua Bakery**  
 66-200 Kamehameha Hwy  
 Haleiwa, Hawaii 96712  
 808-341-2838  
 Open 10am - 5pm  
 CLOSED SUNDAYS  
 Homemade sandwiches, smoothies, cookies and more.  
 \*www.waialuabakery.com \*www.facebook.com/waialuabakeryjuiceba  
 \*waialuabakery@gmail.com

*Shannon Ayonon, LMT*  
 MAT#14274

*Heavenly Touch Mobile Massage Services*

*Also at North Shore Salon & Spa*

*Call to schedule your appointment*

*(808) 352-2677*

*Salon 637-8089*

*Insurance Accepted with Dr.'s Approval*

## Munden Design & Build

Lic.#BC19632

Design • Plans • Permits • Construction  
 Additions & New Residences

808 391-8616

*Providing quality work since 1978*

# PARADISE

*"IF YOU BUILD IT, WE WILL PLUMB"*

# PLUMBING

New Construction, Repair, Remodels

Dale Christensen      C-29856      (808) 368-1473

New Construction • Drain Cleaning

**Got Leaky? Call Greekz!**  
 Residential • Commercial • Remodels • Line Locating • Copper • Galvalume  
 372-1820  
**Greekz Plumbing**  
 #C-32939  
**Plumbing Service & Repair**

## Greekz Plumbing

License# C-32939  
 Phone 372-1820

School of Champions

Established 1966

### International Karate Federation



**IKF Waialua Dojo**  
 Waialua Elementary School

Beginner classes - ages 5 & up  
 Mon & Wed 5:00 - 6:00 pm

Intermediate classes  
 Mon & Wed 6:00 - 7:30 pm

Call 780-5457 or email: [wvbinz.bb@gmail.com](mailto:wvbinz.bb@gmail.com)



## FALL PROGRAM REGISTRATION

### ON-LINE REGISTRATION DATES

(for non-fee classes only)

August 7, 2017, 8:30am

to

August 11, 2017

[www.honolulu parks.com](http://www.honolulu parks.com)

### WALK IN REGISTRATION DATES

Wednesday, August 23, 2017

6:00pm - 8:00pm

Thursday, August 24, 2017

&

Friday, August 25, 2017

2:00pm - 5:00pm

Haleiwa Surf Center: 637-5051

Sunset Beach Recreation Center: 638-7213

Waialua District Park: 637-9721

Waialua Swimming Pool: 637-6061



North Shore Food Bank  
 Food Bag Distribution  
 Wednesdays, 10 a.m.-12 p.m.  
 Waialua Community Association  
 Donations of non-perishable canned foods can  
 be dropped off at the North Shore News office.  
 For more information: 637-3138  
 northshorefoodbank@gmail.com

# WAIALUA PUBLIC LIBRARY UPCOMING EVENTS

**Waialua Used Book Sale**  
 Great Books at Great Prices!  
 Saturday, August 19, 9am to 2pm  
*(Weather Permitting)*

**Waialua Writers' Group**  
 Saturday, August 12, 11am  
*Topic of the Month: "A Myth"*

**Waialua Readers' Group**  
 Thursday, August 24, 9:30-11am  
*Pick of the Month: "The Tenth of December"*  
 by George Saunders

**Waialua Library Recurring Events**  
 Computer Instruction - Fridays, 9am  
 Toddler Time - Fridays, 10am  
 Children's Storytime & Crafts - Saturdays, 10am

**Book Donations Appreciated**  
 Please bring gently used books to the library during  
 regular business hours.

**Library will be closed Friday, August 18, 2017**  
 For a sign language interpreter or special accommodations please call 637-8286

Haleiwa Evangelical Mission International

Come and join us  
 Sunday's at Waialua  
 Elementary School Cafeteria

Sunday School at 9:00 am  
 Worship Services at 10:00 am

For Prayer  
 Call 637-4567

Blessed to be A Blessing

"Children's Church"

**Hey,**  
 How'd ya like to get the  
**North Shore News**  
 Via email on your phone or laptop  
 ... in color!  
 Just send your email address  
 To us at **nshorenews@aol.com**  
 And you get us on-line, free  
 Every two weeks!!!

North Shore News	2017 Schedule	
PUBLICATION DATE	EDITION	DEADLINE DATE
August 16	#16	August 4
August 30	#17	August 18
September 13	#18	September 1
September 27	#19	September 15
October 11	#20	September 29
October 25	#21	October 13
November 8	#22	October 27
November 22	#23	November 10
December 6	#24	November 24
December 20	#25	December 8

Direct-Mailed to Every Home  
 MOKULEIA • WAIALUA • HALE'IWA • KAHUKU • LAIE  
 Every Other Wednesday  
 12,000 copies

"The North Shore's most popular publication" since 1970  
 (808) 637-3138 • NShoreNews@aol.com • NSN4Linda@aol.com  
 www.northshorenews.com



# CLASSIFIEDS

The North Shore News is published every other Wednesday and mailed free of charge to all North Shore homes and businesses. Extra copies may be obtained at our office.

**PRESS RELEASE POLICY:** Submit press releases in person, mail or email to Editor, North Shore News, 66-437 Kam. Hwy., Suite 210, Haleiwa, HI 96712. Please type your releases and keep them shorter than 200 words unless they are of an unusual news interest. Releases should be viable news stories and are published on a **space available basis only**, with priority given to those received in our office first. You may attach photos. We are not responsible for the return of any photos. All materials are submitted at owner's risk. We reserve the right to edit and/or refuse all submissions including advertising.

**EDITORIAL POLICY:** We welcome articles and letters from our readers. Letters to the Editor are published on a space available basis only and preference is given to shortness of length, and quality of content. We prefer to run not more than one letter, per person, per 6 month period. Letters subject to edit.

Views expressed by our contributing writers and advertisers do not necessarily reflect the view of the management and staff of the North Shore News. All rights reserved. Reproduction in whole or part without permission is prohibited. © 2017.

**Editor & Classifieds**  
Linda Seyler

**Typography**  
Downtown General Store

**Contributing Writers**  
Tom Jacobs  
Betty Depolito  
Naty Hopewell

City Councilman Ernie Martin  
State Representative Lauren Matsumoto  
State Representative Sean Quinlan  
Senator Gil Riviere  
Malia K. Evans  
Blake McElheny

**Photography**  
Banzai Productions



Please recycle this newspaper.

## SERVICES

**SHORE ELECTRICAL SERVICE**  
New Const-Remodels  
638-0049 / Lic#C20777

**Computer Problems?**  
I can fix any MAC or PC.  
Chris 371-3089

**Andres Plumbing**  
All your plumbing needs  
808-256-7337 Lic#C24500

**North Shore Pumping**  
Septic and Cesspool Services  
Clifford 638-0900 • 291-5099

**Carpentry & Painting Services**  
Repairs/Remodeling,  
Termite Rot, Doors, Cabinets,  
Countertops, etc.  
Reasonable Rates 271-6584

**HANK'S WELDING**  
Certified, mobile, fabrication &  
installation services. Specializing  
in stainless steel welding.  
386-3992

**Green Gypsy Thrift Shop**  
Waiialua—(808) 366-4000  
Next to Paalaa Kai Bakery

**Dog/Cat Nail Trimming**  
At your home—only \$20.00  
Call 637-5395

**North Shore Car Rentals**  
Low cost rental cars.  
Rates are low by providing  
slightly older cars with a  
"local" vibe to them, don't  
be fooled. All vehicles are  
well maintained and safety  
inspected. please visit  
northshorecarrentals.com or  
call (808) 260-4960.

**Massage Therapy**  
Specializing in Swedish  
relaxation, Sports Massage  
Deep Tissue—Gift Certificates  
25 yrs licensed experience  
MAT 8865  
Call Allen 638-0346

**Paumalu Electric Inc.**  
C 18074

Residential & Commercial  
New Installation & Repairs  
Renovations. Remodels  
Electric Meter Replacements  
  
Dave Hancock 638-9054

**Hawaii Tree Co.**  
Trimming & Removal  
Professional-Reliable  
Free Estimates  
462-2749

**PIANO LESSONS**  
Guitar, Ukulele, Bass,  
Singing, Songwriting  
637-4635

**LEARN TO SWIM**  
AT THE  
**HAWAII SWIM**  
**SCHOOL**  
ON THE NORTH SHORE  
Developing swimmers since 1982  
Haleiwa Rd. at Smiley Place  
637-4863

**Radiant Skin Care & Waxing**  
Aynjul Benigno  
Licensed Esthetician  
Call or Text 808-222-8124  
radiantskincaresandwaxing.com  
66-935 Kaukonahua Rd.,  
Waiialua

**Aloha Computer**  
PC/MAC Repair/Virus Removal  
Fax/Copy/Internet Access  
Located next to Paalaa Kai Bakery  
Open M-S, 10-4.  
372-2667 or 237-4558

## BIKRAM YOGA

*BUILD STRENGTH,  
FLEXIBILITY & BALANCE*  
*BEGINNERS TO ADVANCED*  
Please call for class schedule  
**637-5700**

**HARVEY'S TOWING LLC**  
24 hr Towing Service  
Lockouts, Jumpstarts &  
Recovery. Specializing in  
opening locked car doors.  
Call anytime 478-0333

**Your Clean Home**  
**Vacation/Residential**  
**Home Cleaning**  
Affordable • Reliable  
• Green Cleaning  
**For Free Estimate**  
**Call 364-6089**

**BOBBY'S BODIES**  
Tuesday evenings at 5:00 p.m.  
• Body Toning  
• Cardio Pump/Fat Burner  
For more info: call Bobby, owner of  
BOBBY'S BODIES at 637-4150

**ANGELS**  
**PLUMBING**  
Repairs  
Remodeling  
Renovation  
**638-7878**  
Lic. #C12004



**Animal Rescues & Investigations**  
**356-2256**



Like us on Facebook:  
Facebook.com/  
NSNewsHaleiwa

## HOW TO CONTACT THE NORTH SHORE NEWS

Letters to the Editor, and other items submitted for publication consideration may be sent to us via:

MAIL: 66-437 Kamehameha Hwy., Suite 210, Hale'iwa, HI 96712

E-MAIL: NSHoreNews@aol.com

PHONE: (808) 637-3138

Office Hours: Monday – Friday 10 a.m.-3:30 p.m.

www.northshorenews.com

# CLASSIFIED ADS

**Next Issue - Aug 16, 2017**  
**Deadline Date - Aug. 4, 2017**

## FREE ADS

**Garage & Yard Sales,  
 Reunions, Lost & Found.**  
 Email ad to:  
**NShoreNews@aol.com**



Like the North Shore Food Bank on Facebook:  
 Facebook.com/  
 Haleiwa Food Bank

## BUSINESS SERVICES CENTER

Fast & Convenient Copy, Fax, Scan,  
 Computer/Internet, Laminate, & More



Across from  
 the Haleiwa  
 Post Office

637-4558 • gonorthshore.org  
 #gonorthshore

## Classified Ad Rates

3 lines (min.) \$18.89  
 4 lines \$25.13  
 5 lines \$32.45  
 1" Box Ad \$41.88

(27 characters in each line)

Include your contact information.  
*\*Ads can be dropped off in mail slot,  
 mailed, or emailed. Pay by check payable to: North Shore News or credit card by phone order.*

We reserve the right to refuse any advertisement with a full refund.  
 North Shore News • 66-437 Kam. Hwy.,  
 Suite 210, Haleiwa, HI 96712  
 • (808) 637-3138 • NShoreNews@aol.com

**Marianne Abrigo, Properties**

Specializing in -  
 North Shore  
 Real Estate

Ask for our list of available properties and/or a free market analysis.

**Marianne M. Abrigo**  
 "Realtor since 1974"

Office 637-3511  
 Fax 637-0777  
 Email mabrigo222@aol.com

## HELP WANTED

**Bobby Benson Center**  
 Youth Counselors Needed  
 To work a variety of Shifts  
 Work with at Risk Youth  
 Located in Kahuku. Send  
 Your resume to:  
 abugarin@bobbybenson.org

**Matsumoto Shave Ice**  
 Now Hiring!  
 Apply in person daily  
 9a-4p  
 808-637-4827

## Retail Sales Surf & Sea

Hawaii's Ocean Sports Headquarters is always looking for hard working, energetic people to become a part of our sales team. Good pay, bonus, benefits. Japanese speaking a plus. Ocean sports experience and dive instructor wanted. Please contact surfnsea@surfnsea.com for details.  
 Apply in person daily 9am-7pm  
 62-595 Kam. Hwy., Haleiwa

## NORTH SHORE SURF SHOP ALOHA AMBASSADORS NEEDED!

NOW HIRING! Sales Staff and Manager Positions-Hard Working and Friendly-Japanese, Korean, Chinese Speakers are a PLUS-COME JOIN OUR OHANA!  
 CALL 637-5002 NOW!  
 Apply in Store  
 66-150 Kam Hwy, Haleiwa.

**Hawaii Polo**  
 Sunday in the Country  
 August 6  
 Hawaii Polo Field

**Oahu SPCA**  
 Needs donations:  
 cat food, cat litter,  
 dog food, towels  
 and pet toys. Drop  
 off at 823 Olive Ave.  
 Wahiawa 808-754-1510

**For Advertising Rates**  
 Call 637-3138 or go to  
 www.northshorenews.com

## FOR RENT

### TABLES & CHAIRS 780-8037

**3BD/1BA IN PUPUKEA**  
 Newly Renovated on 1.1 Acre Property  
 Living Rm w/ Dining Area  
 Full Kitchen, Refrigerator w/ Icemaker  
 Full Bath w/ Full Sized Tub  
 Large Yard w/ Landscape Maint.  
 Included  
 \$2,800/month  
 Call 838-1203

**Large & Modern 1BD/1BA**  
 Fully Furnished & Ready to Move-In  
 Designer Granite Kitchen  
 Stainless Steel Appliances, Sub-zero  
 Refrigerator  
 Full Marble Bath  
 Privately Gated Property in Pupukea  
 \$2,125/month  
 Call 838-1203

## MISCELLANEOUS

**Report  
 Abandoned Vehicles**  
 733-2530

**Dept. of Parks  
 and Recreation**  
 City Parks,  
 Park Trash Cans &  
 Public Street Beautification  
 (808) 768-3003

**VETERANS AFFAIRS**  
 Homeless Outreach  
 Veterans Program  
 Call Art Minor  
 (808) 208-0406

**na-hawaii.org**  
 CLEAN IN DA COUNTRY  
 OPEN MEETING OF N.A.  
 Mondays 6:30pm-7:30pm  
 Saturdays 9:30am-10:30am  
 Sunset Beach Recreation Center  
 59-540 Kam Hwy

**Koolauloa Health Center**  
 1st & 3rd Wednesday  
 Haleiwa Gym, 9am -12  
 Assistance with insurance  
 & other public benefits, health  
 education & medical care.  
 For more info call 792-3843

Parkinson's Group Meeting  
 Group meets at the Waiialua  
 United Church of Christ on the  
 1st Saturday of every month.  
 Next meeting August 5  
 @ 10am  
 Abel 253-9541

## OFF da ISLAND

Are you leaving Oahu on vacation or business? Do you live on a neighbor island, the mainland or foreign country and subscribe to the North Shore News? Try send us a photo of someone in front of a sign or landmark holding a copy of the NSN. Email your photo along with the person or persons' name, community of residence, telephone number and photo location to: NShoreNews@aol.com.

**North Shore Food Bank**  
 Food bag distribution  
 Wednesdays at Haleiwa  
 Gym across from  
 Post Office  
 10am-12pm

## Hazardous Waste Disposal

Next drop off date Sept. 2  
 By appointment only call  
 by Aug. 25, 768-3201

## Interested in Volunteering?

Oahu SPCA  
 Cats & Dogs needs your help.  
 outreach@oahuspca.org  
 808.754.1510  
 823 Olive Ave, Wahiawa

**NOAA Stranded, Entangled  
 Injured Sea Turtles**  
 (808) 725-5730

## OHANA DROP

Sponsored by the  
 North Shore Food Bank  
 Wednesday, August 2  
 Waiialua Community  
 Association

## CAR WASH

Saturday, August 12, 2017  
 9am at WCA  
 Proceeds to benefit the  
 North Shore Food Bank

## Honolulu Museum of Art Free Days

1st Wednesday of the month,  
 Bank of Hawaii  
 Family Sundays  
 third Sunday of the month  
 11am - 5pm



**FRIDAY, SEPTEMBER 1, 2017**

**9 A.M. - 2 P.M.**

**WAIALUA COMMUNITY ASSOCIATION BUILDING**

**66-434 KAMEHAMEHA HIGHWAY**

**HALEIWA, HAWAII 96712**

*For questions about this event, or  
if you would like to volunteer contact:*

**Jackie Nguyen: 808-347-4412**

**Or**

**Kurtis Ching: 808-433-0357**

