



"E Ala Na Moku Kai Liloloa"

*HALEIWA ARTS
FESTIVAL 2016*

Program Guide
Pages 11-14



Eduardo Bolioli

NORTH SHORE NEWS July 6, 2016 VOLUME 33, NUMBER 14

19TH ANNUAL

HALEIWA ARTS FESTIVAL 2016

SATURDAY JULY 16 / SUNDAY JULY 17 • HALEIWA BEACH PARK • NORTH SHORE OAHU

KEAN

2016 FEATURED ARTIST: STEVEN KEAN

Kean began surfing the beach breaks of New Jersey at an early age, and his relationship with the ocean inevitably laid down permanent roots in his developing creativity. "I went on to study art and art education at Temple University in Philadelphia. I explored a lot of material, but would always come back to surf art. The ocean, the waves, the light – they're all beautiful and inspiring, sure. But it's more than that I think. The ocean is primordial. Riding a wave is this weird and wonderful symbiosis. I'm always trying to convey what it's like to be with the ocean that way. And not just convey it but process it, too. It's such a powerful experience that we'll always be trying to process it, I think. That's partly why I took to the printmaking so strongly."

PURCHASE A T-SHIRT AT THE FESTIVAL SHOP, AND HAVE IT SIGNED BY STEVEN AT BOOTH 106!

66-437 Kamehameha Hwy., Suite 210
Hale'iwa, HI 96712

PRE-SORTED
STANDARD
U.S. POSTAGE PAID
Honolulu, Hawaii
Permit No. 1479

PROUDLY PUBLISHED IN
Hale'iwa, Hawai'i

Home of
**North Shore
Outdoor Circle**

Polo in Paradise



WWW.HAWAIIPOLO.COM



Beach side viewing • Tailgate party

Full Bar • Local food vendors

Live music till sundown

Skydive half-time show

Every Sunday

/hawaiipoloclub

EQUUS

Pacific Air Cargo

WEALTH STRATEGY PARTNERS
PROTECT • INVEST • ACHIEVE

April 10 - September 4

hawaiipolo

Gates Open - 11am

808-220-5153

nm9
radio media group

Home Instead
SENIORE CARE

NOH
Foods of Hawaii

Int-rim
HEALTH CARE
(808) 951-0949

SKYDIVE HAWAII

Production Hawaii
VERY SPECIAL EVENTS

First Match - 2pm

WELCOME!

Dr. Irene Hwang to our Haleiwa practice. She is boarded in Family Medicine and Addiction Medicine, and is gladly accepting new patients. She is available Tuesday through Saturday in Haleiwa.

Like her colleagues here at Haleiwa Family Health Center, she is passionate about the wellness of body and mind, and preventative approaches to health. Dr. Hwang completed her medical degree at Stony Brook University in Long Island, NY and her residency training at Montefiore Medical Center in Bronx, NY.

The Haleiwa Family Dental Center, Ltd.



now offering



- Adults and children
- Most cases completed in 4-12 months
- Clear braces available
- Lower cost
- University tested
- Used for over 20 years

Produced by Todd R. Okazaki and Staff

"Straighten those crooked teeth that have bothered you for years"

Conveniently located behind First Hawaiian Bank in Historic Haleiwa Town
Call 637-9652 for your reservation

66-037 Kam. Hwy., Ste. 3
Haleiwa, next to Growing Keiki

Saccoccio & Lopez

ATTORNEYS AT LAW
Serving Haleiwa since 1984

*Bankruptcy
Personal Injury • Criminal Law
Landlord/Tenant
Traffic Offenses • DUI*

Family Law
*Adoption • Custody • Divorce
Paternity • Guardianship
Deeds, and Wills*

Notary Public

637-7611

VISA/MC Accepted



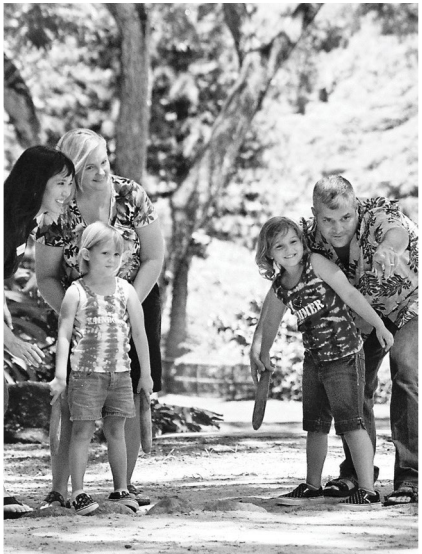
Paul & Nita



4th Annual
**SUMMER
CONCERT
SERIES**

MELE KULĀIWI *Songs of Our Native Land*

SATURDAY 7/30 ▶ 3 PM



The Proud Peacock
**Dinner Buffet
& Moon Walk**

7/15, 7/16, 8/19, 8/20
Dinner Buffet: 5pm
Start Moon Walk: 8 - 9pm

Dinner Buffet: \$29.95/adult,
\$12.95/child (12 & under) —
Includes free Moon Walk
admission! Moon Walk Only:
\$10/person

BIG KNIFE
BROTHER NOLAND
KAPENA
MAILANI MAKAINAI
RAIATEA HELM
**KUMU HULA TRACIE &
KEAWE LOPES & KA LĀ
'ŌNOHI MAI O HA'E HA'E**
**TICKETS:
WAIMEAVALLEY.NET**


**Kama'aina Keiki &
Lā Ohana Family Days**


Kama'aina Keiki: Every
Wednesday • Lā Ohana:
3RD Sunday Every Month

Enjoy free/ discounted
admission, activities, games,
and much more for the
entire family

MORE UPCOMING EVENTS

 **HALEIWA FARMERS' MARKET**
Every Thursday, 2 - 6pm
Join us every week and help support local farmers
and artisans at our award-winning farmers' market!

 **SCREEN ON THE GREEN**
Every Thursday Through 7/28
Free open-air movie nights featuring new
and classic films for the whole family

 **PLANT SALE**
Every Saturday, 8am - 12pm
Shop the Waimea Valley nursery for plants and
flowers from our world-class botanical gardens

 **KALO & AWA FESTIVAL**
Saturday, 9/10
Free annual event celebrating kalo and awa, with
local farmers, tastings, workshops, and much more!



On the North Shore Across from Waimea Bay
Open 9am - 5pm Daily • Call: (808) 638-7766
WAIMEAVALLEY.NET

WHERE HAWAII COMES ALIVE

WHAT'S HAPPENING AT THE HUKILAU

Now Open! RAY'S KEAWE BROILED CHICKEN

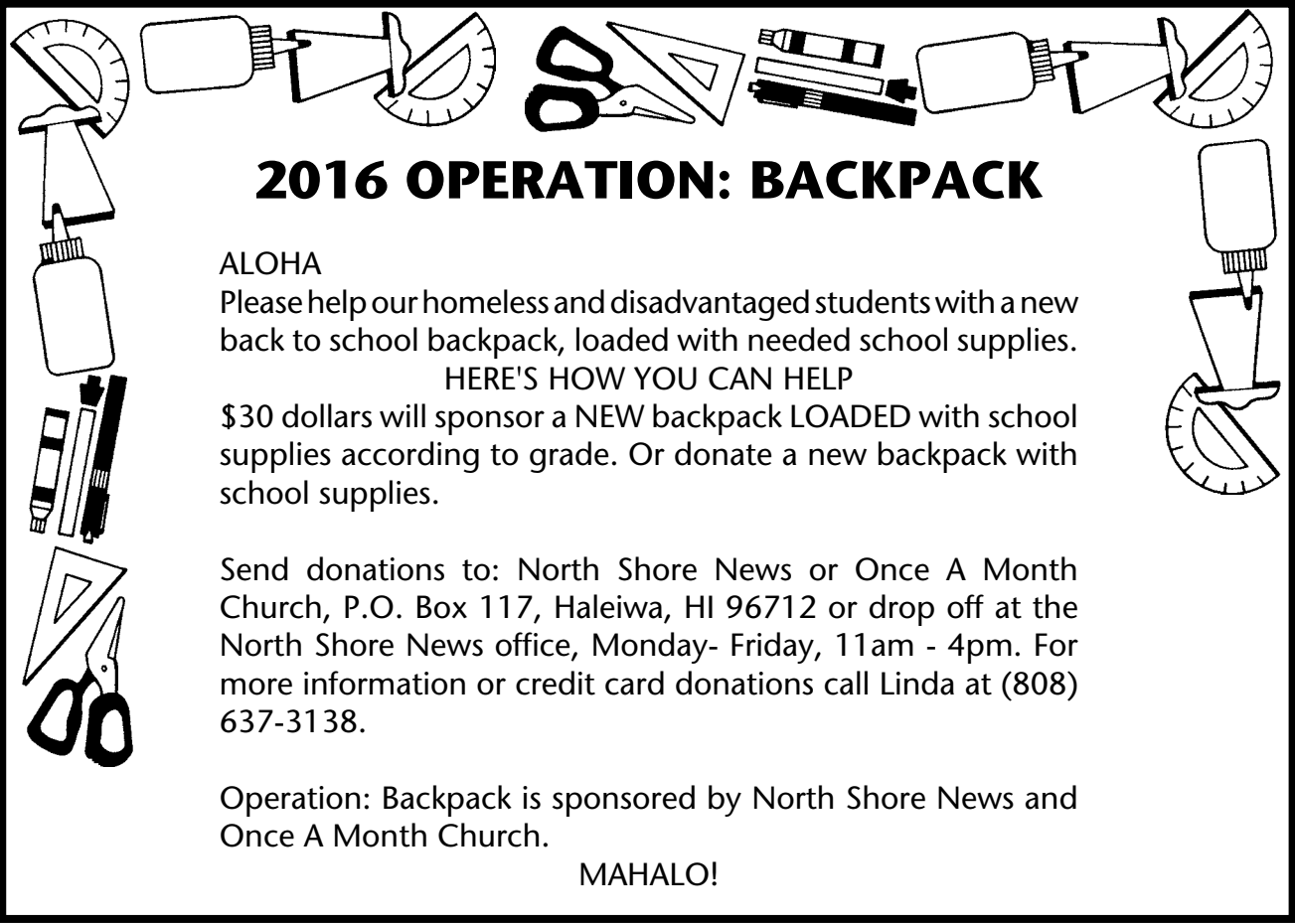
FREE Movie Night
1st Friday of every month!

FREE Open Mic Night
3rd Friday of every month!

COME ON DOWN to the **Hukilau Marketplace** for great deals and family fun. We're a unique gathering place filled with wholesome entertainment, island shopping, and dining experiences reminiscent of historic Laie town. Visit HukilauMarketplace.com/events.

A new North Shore shopping & dining experience.

FREE parking. FREE wi-fi. Closed Sundays. (808) 293-3142

2016 OPERATION: BACKPACK

ALOHA
Please help our homeless and disadvantaged students with a new back to school backpack, loaded with needed school supplies.
HERE'S HOW YOU CAN HELP
\$30 dollars will sponsor a NEW backpack LOADED with school supplies according to grade. Or donate a new backpack with school supplies.

Send donations to: North Shore News or Once A Month Church, P.O. Box 117, Haleiwa, HI 96712 or drop off at the North Shore News office, Monday- Friday, 11am - 4pm. For more information or credit card donations call Linda at (808) 637-3138.

Operation: Backpack is sponsored by North Shore News and Once A Month Church.

MAHALO!



Council Chair
Ernie Martin
Serving You in District 2

The statistical report for the 2016 Statewide Point in Time Count was recently made public. Although slightly, the number of homeless on Oahu increased for the 7th straight year, up to 4,940 from 4,903 in 2015, a 1% increase. Statewide the population increased 4% to 7,921 from 7,620 in 2015. The largest increases were on Kauai with 103 more homeless people and on Hawaii Island with 153 more homeless individuals than last year. The numbers seem to indicate a more stable situation on Oahu but it is disappointing to see even a slight increase in our homeless population. It's tough to see families living in tents on the side of the road while we build more high-end, market rate housing. We need tens of thousands of affordable units to effectively reduce the number of people living on the street.

The lack of affordable housing and the problems of growing homeless population was one of the most pressing issues before the Honolulu City Council during the budget deliberations this year. It was clear that sweeping generalizations and broad-based solutions will always have limited effectiveness because one size does not fit all. For example:

- The chronically homeless, those who have been shelterless for years and suffer from medical or other enduring issues, require much more than just a place to live if they are to remain housed.
- The transitional homeless who go in and out of programs, such as substance abuse treatment, have a difficult time staying with any one program.
- Many families are episodic homeless, employed but often have difficulty meeting financial obligations such as rent. They get evicted and become homeless until they find some sort of assistance to return them to housing.
- The voluntary homeless simply prefer that lifestyle and usually decline any form of shelter or housing that has rules or eligibility requirements.

On Oahu, the problems are often compounded by the high cost of living, the lack of truly affordable housing, and the absence of any comprehensive, long-term plan that customizes solutions for the diverse population and stays connected to them even after housing is found. Permanent supportive housing, built by private and non-profit developers can dramatically increase our inventory of affordable housing for families earning less than 50% of the Area Median Income.

Our neighborhoods are diverse. What works in one part of the island might not work in another.

That's why it's critical to involve communities from the start and keep them engaged in the process. We will continue our efforts to search existing city properties for vacancies or opportunities to refurbish or repurpose them to create social service hubs, hygiene centers, or whatever works in a particular community. The City Council has provided over \$60 million in consecutive years in a clear policy statement that it considers this issue a top public priority. In this year's budget, the Council provided \$2 million for each of the nine Council districts, to build solutions that recognize the uniqueness of homeless issues in each district. This recognizes that one size does not fit all and that the most effective solutions will be those that account for the subtle but significant differences among the homeless populations. Should you have suggestions on how best to deal with the issue of homelessness in our north shore community, please feel free to e-mail me at emartin@honolulu.gov. Mahalo.

Sunset Beach Community Association Meeting
Wednesday, July 20, 2016 7pm - 9pm
Sunset Beach Recreation Center

PAALAA KAI BAKERY

Gather all your beach supplies cause it's time for summer!

Your Hometown Bakery OPEN 7 DAYS A WEEK 5:30am-7:00pm

Perfect treats for you to enjoy before or after a day in the sun!

www.pkbsweets.com

**Better
Homes**
and Gardens.
REAL ESTATE

**ADVANTAGE
REALTY
NORTH SHORE**

LOCAL REAL ESTATE EXPERTS WITH NORTH SHORE ROOTS

EXPECT BETTER SM

photo: Wayne Agsalda

MAY 2016 MEDIAN SALES PRICE: SINGLE FAMILY HOME \$719,000 | CONDOMINIUM \$373,000



**KARIN
MOODY-TSUTSUI**
R, PB, RB-19578
(808) 392-7410



**NOEL
MARCHAN**
RA, RS-73977
(808) 282-0949



**MEME
MOODY**
RA, RS-74874
(808) 741-3835



**JACQUELINE
MANSARD**
R, RB-10744
(808) 371-6897



**LARA LEIMANA
FONOIMOANA**
RA, RS-72653
(808) 220-6545



**SUZANNE
REED**
RA, RS-77248
(808) 779-7431



**JEFF
SPEICHER**
RA, RS-77870
(808) 428-3211



STOP BY OUR NEW OFFICE IN THE HALE'IWA STORE LOTS!
66-111 KAMEHAMEHA HWY. #902, HALEIWA, HI 96712
(808) 637-1500 | BETTERHAWAII.COM

Talking Story with Tom Jacobs

A New Vision for Dillingham Ranch Kennedy Wilson Offers a Revised Development Plan for the Iconic North Shore Property

In an exclusive release to the North Shore News, the real estate investment and management firm of Kennedy Wilson has presented its latest development vision for a substantial part of the 2,700-acre Dillingham Ranch in Mokuleia, which was first acquired by Benjamin Franklin Dillingham in 1897.

Many of the features of the ranch will remain essentially intact. Equestrian boarding remains, but with a new polo field and two new practice fields, more horseback trails, barns, and a ranch office. The coconut tree grove, already the largest in Hawaii, will stay. Dillingham Lodge, with its 3,000-square-foot great room, built by Ben Dillingham's son Walter in 1917, will continue to serve the community as a venue for weddings and other functions.

Some features are added. Several acres near the lodge will be set aside for "farm-to-table" farmers. An expanded private road network will be built, and a private wastewater plant added, along with a new property maintenance complex. The developer has promised to protect identified archaeological and cultural sites, and provide for informal grazing and riding land mauka on the property.

The biggest change, and inevitably the most controversial, will be the placement of 70 "agricultural lots" sized from two to 77 acres. Each lot may house a maximum 5,000-square-foot home/garage/pool complex, with the remainder of the lot reserved for open space or agriculture. This reduces the total number of home-lots proposed by the developer by 22 and cuts total residential acreage in half. The 70-odd property owners will own "all other portions of the project site" in a homeowners' association.

Kennedy Wilson is working to meet the necessary legal and procedural requirements leading to an environmental impact statement (EIS) and approval of the project by the Department of Planning and Permitting as an agricultural subdivision. The next event of interest to local residents will be the publication within the next 30 days of an EIS Preparation Notice with more specific data. Kennedy Wilson

estimates a year to complete the approval process, then two more years to put in improvements (roads, drainage, wastewater treatment, and other infrastructure). Current property use (equestrian, coconut farm, Dillingham Lodge) will continue.

The developers welcome, and intend to solicit, input from the North Shore community, including public meetings.



Photo: Kennedy/Wilson

PAALAA KAI BAKERY

**IT'S HOT OUT THERE!
COOL OFF @ PKB**

PURCHASE A FRESHLY MADE SANDWICH AND GET 50% OFF A COLD DRINK OF YOUR CHOICE

EVEN BETTER, BUY 1 PIG IN A BLANKET AND GET 50% OFF A SECOND ONE OR 50% OFF YOUR CHOICE OF OUR REFRESHING MIXED JELLOS

Offer only valid July 6 ~ July 19, 2016.
Not valid with other offers, promotions,
or daBest VIP card discounts.

www.pkbsweets.com



**Senator
Gil Riviere**
**Serving Oahu's North and
Windward Shores**

Offshore Windmills

The Federal Bureau of Ocean Energy Management (BOEM) is considering the feasibility of giant industrial wind turbines to be constructed as close as seven miles offshore from Kaena Point and Barbers Point.

Two commercial wind developers submitted proposals last year for authority to construct hundreds of floating wind turbines capable of producing enough electricity to meet more than half of Oahu's demand. BOEM has determined the project is worth consideration of an Oahu Call Area in two locations from seven to 35 miles offshore of Oahu.

The BOEM team and the administrator of Hawaii State Energy Office, Mark Glick, hosted a public informational meeting on June 23rd at Waiialua Elementary School, one night after a similar meeting was held in Nanakuli and after other presentations in Honolulu.

Mr. Glick started off the meeting with an overview of Hawaii's Clean Energy Initiative, which requires 100 percent electrical generation from renewable resources by the year 2045. Hawaii leads the nation in alternative energy production and we will continue to expand our diverse portfolio of energy production, which includes solar, wind, geothermal, biomass, hydrogen, and ocean energy.

Glick mentioned the controversial inter-island power cable plan from a few years ago that would have placed hundreds of windmills on Lanai and Molokai and cost billions of dollars. He noted that it was extremely unpopular on those islands and their opinion mattered. Readers may remember that I was one of the most outspoken critics in the House of Representatives, along with Rep. Cynthia Thielen, of that proposal in 2011 and 2012.

The BOEM representatives described the many steps and multi-year permitting process, stressing that offshore wind turbines in Hawaii are not a foregone conclusion. The next step in this federal review process is a call for interested wind developers to apply for permission to thoroughly study project feasibility. Simultaneously, an Environmental Assessment will be conducted. Approvals will also be needed from Hawaii regulators and agencies, should the project progress.

Not one person in the audience spoke in support of the project; rather, all comments were in strong opposition. As one community member pointed out, a list of pros and cons reveals some positive benefits, but many more adverse effects that should

lead to any easy decision to not proceed. Expressed concerns include adverse effects on bird and fish migration routes between Oahu and Kauai, restrictions to boaters and fishing, large number of bird deaths, environmental impacts from the underwater power cable, the importance of Kaena Point to Native Hawaiians, and visual blight, particularly in the evening.

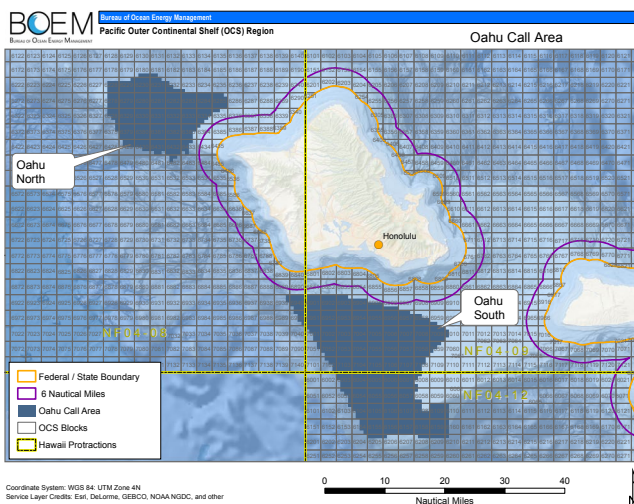
Public comments are encouraged on the proposed Environmental Assessment and the proposed projects until August 8, 2016. Although BOEM believes that competitive interest may exist, a formal determination will be made after the close of the comment period. They request comments and information from interested and affected parties about site conditions, resources, and existing uses within or in close proximity to the Oahu Call Area that would be relevant to BOEM's review of any nominations.

Information about the offshore wind review process is at boem.gov/Hawaii.

You can submit comments on the project by entering BOEM-2016-0049 in the search window at Regulations.gov

You can submit comments on the Environmental Assessment by entering BOEM_FRDOC_0001-0380 in the search window at Regulations.gov

My phone number is 586-7330. My email address is SenRiviere@capitol.hawaii.gov. If you still use a fax, you can transmit to 586-7334. Follow us on FaceBook or online at SenatorRiviere.com. Please visit us in Room 217 at the Capitol; or let's talk closer to home, maybe the next time we pass in the street.



Jocko Chun's to Waimea Swim

Saturday, July 9, 2016

7 a.m. - 1.6 miles

Chun's Reef to Waimea Bay

3rd event of the 28th Annual 2016

North Shore Swim Series

http://waikikiswimclub.org/ocean_races.php



State Representative
Feki Pouha
Serving You in District 47

Aloha!

I hope you're all enjoying your summer. Similar to last month, I wanted to provide a legislative update and inform you about some of the new laws that have been recently signed by Governor Ige. Below is a summary of selected bills which have been signed into law so far:

ACT 67 (SB2453) RELATING TO AQUATIC RESOURCES.

Authorizes the court to require violators of certain laws pertaining to aquatic resources to complete an educational class and/or pay a monetary fine or perform community services in lieu of paying monetary fine.

ACT 69 (HB2252) RELATING TO DISCHARGE PLANNING (CARE Act).

Requires hospitals to adopt and maintain written discharge policies consistent with recent updates to federal regulations. Requires hospitals to offer to instruct family caregivers in necessary tasks (such as medication management and injections) that will be performed at home once the patient is discharged.

ACT 80 (HB2082) RELATING TO ADOPTION RECORDS.

Allows adopted individuals who have attained eighteen years of age, adoptive parents, and natural parents unfettered access to the adopted individual's sealed adoption records.

ACT 94 (HB900) RELATING TO MEDICAL ASSISTANCE FRAUD.

Provides that a person commits medical assistance fraud if the person knowingly makes or causes to be made a false statement or representation of a material fact relative to the medical assistance program. Clarifies that fraudulently applying for or renewing medical assistance benefits is a class C felony and specifies the restitution amount chargeable for a violation. Applies extended statute of limitations for felonies involving fraud or deception to medical assistance fraud.

ACT 106 (HB2582) RELATING TO FOOD SAFETY.

Requires the Department of Agriculture to develop and implement an Agricultural Food Safety Certification Program that concurrently complies with the FDA Food Safety Modernization Act as it applies to farmers and ranchers. Authorizes and appropriates funds for program staff.

ACT 112 (HB2267) RELATING TO TECHNOLOGY IN SCHOOLS.

Defines curricular materials to include both printed and digital material. Clarifies that moneys for curricular materials can be used for digital formats.

ACT 123 (SB2670) RELATING TO BEHAVIOR ANALYSTS.

Reduces the surcharge on the license fee and renewal fee for behavior analysts from \$100 to \$50. Temporarily exempts from the licensing requirements for the practice of behavior analysis direct support workers who provide Medicaid home and community-based services pursuant to the Social Security Act through January 1, 2019.

ACT 125 (SB2647) RELATING TO NATURAL RESOURCES.

Prohibits the sale, offer to sell, purchase, trade, possession with intent to sell, or barter of any part or product from various animal and marine species. Provides exceptions to this prohibition, including for traditional cultural practices protected under the State Constitution. Imposes penalties for violations of the prohibition on trafficking animal parts and products.

To view a complete list of the bills signed by Governor Ige, please visit <http://governor.hawaii.gov/bills/2016-acts/>. As always, feel free to contact our office should you have any questions. Email: RepPouha@capitol.hawaii.gov; Phone: 808-586-6380.

Mahalo!

Cholo's Homestyle Mexican



**Restaurant
& Margarita Bar**

FOR ALL YOUR CATERING NEEDS

Special Occasions Large & Small
 Cholomobile Available...

"We Bring the Party to You!"

Open Everyday 9:30am-9:30pm

Happy Hour: 4-6pm M-F (Food & Drink Specials)



North Shore Marketplace, Haleiwa
 637-3059 www.CHOLOS.mx

GRAND OPENING

59-186 KAM HWY, HALEIWA, HI 96712

NEW SUNSET BEACH, NORTH SHORE LOCATION NEXT TO CHEVRON

RIBBON CUTTING OPENING CEREMONY AT 11AM



The Original

BANZAI BOWLS®

Live life in the bowl



SATURDAY JULY 23 2016

FREE BOWLS FROM: 11AM-2PM



19TH ANNUAL

HALEIWA ARTS FESTIVAL

2016 FEATURED ARTIST: EDUARDO BOLIOLI



Born in Montevideo, Uruguay in 1961, Eduardo Bolioli migrated to New York with his family in the late seventies, where he studied at the prestigious School of Visual Arts. He moved to Honolulu in the mid-eighties, and made a living painting surfboards for pro surfers, including world champions Shaun Tomson, Sunny Garcia and Martin Potter. He became the art director for Blue Hawaii Surf, and later, for Local Motion, and he designed for surf brands like Quiksilver, Billabong and Gotcha.

Bolioli has won several awards for his art, including the Aloha Award by the HACER Society in 1992, the Stimulus Award at The Mosca Biennale in Uruguay (1995) and the Premiere award in Les Embiez, France. In 2002 he received the golden award for his contribution to the arts at the Premios a la Cultura awards in Montevideo, Uruguay, and his Absolut pieces are part of the Absolut Museum in

Sweden. Over the years he had solo and group shows in New York, Los Angeles, Honolulu, Tokyo, Seattle, Kona, Scotland, Caracas, Lima, Bogota, Quito, Uruguay, Miami, San Francisco and New Jersey, and his paintings are in private collections around the world.

PURCHASE A TOTE AT THE FESTIVAL SHOP, AND HAVE IT SIGNED BY EDUARDO AT BOOTH 105!

**ART
MUSIC
FOOD
FAMILY
FRIENDS
FUN
& FREE!**

2016 HAF BOARD OF DIRECTORS

EXECUTIVE DIRECTOR

KATHLEEN ELLS

EVENT PLANNER

PATSY PSICHOGIOS

PRESIDENT

SHARLYN FOO

VICE PRESIDENT

CAROLINA CRISTANCHO

SECRETARY

A'ALA LYMAN

BOARD MEMBERS

KIM DEVEREAUX

DENA FITZGERALD

JULIE SCHAPER

GRAPHIC DESIGN

PATSY PSICHOGIOS


MARSHA TAYLOR

BRANDON WALLIS

CAROLE WARD

SUPPORT

DAWN DASILVEIRA

 The Haleiwa Arts Festival offers water in zero-waste cups, helping this community event to reduce single use plastic.

COMMUNITY4ART

P.O. BOX 1141 • HALEIWA • HI 96712 • 808.637.2277 • HALEIWAARTSFESTIVAL.ORG



This event is sponsored in part by the City and County of Honolulu, The Hawaii State Foundation on Culture and the Arts, and HTA.

HALEIWA ARTS



2016 FEATURED ARTIST: BILL BRADEN

Bill studied at the Royal Academy of Arts in London in 1976 and received a BA from the Rhode Island School of Design in Providence Rhode Island and Rome, Italy in 1980. Even though Bill studied at these top art schools, he feels it was painting on location in Hawaii that gave him the real applied experience he needed to be a land and seascape artist. His first exhibition was called "Lanikai Perspective" at Kailua Gallery in 1978.

Bill was selected from over 200 applicants to paint "The Best Beaches of Hawaii" for the City and County of Honolulu in 1990. Clients from Europe, N.Y., California, Japan and many other places have these works and say that these paintings have a calming, peaceful effect on them. Braden has recently enjoyed taking cruises to various parts of the world and has found his time at sea has been inspirational, taking his series to an even a higher level.

PURCHASE A POSTER AT THE FESTIVAL SHOP, AND HAVE IT SIGNED BY BILL AT BOOTH 122!

Sat
Ha

The 19th
art and keil
Saturday, Ju

Event at
photograph
and purchas

This ann
Entertainm

Art dem
enhance thi
It's Fun and

M
F
FA
FR

&

Haleiwa

FESTIVAL 2016

Saturday, July 16 • 10-6 / Sunday, July 17 • 10-5
Haleiwa Beach Park • North Shore

The Annual Haleiwa Arts Festival features over 140 juried visual artists as well as musicians, singers, dancers, student keiki art activities. The event takes place at Haleiwa Beach Park on Oahu's beautiful North Shore. Festival hours are July 16 from 10 am to 6pm and Sunday, July 17 from 10am to 5pm.

Attractions include both traditional and contemporary artists with original works and limited editions in painting, photography, printmaking, ceramics, wood, fiber, sculpture, jewelry, glass and other mediums. Art is available for viewing and purchase directly from the artists.

The annual celebration also includes performance art, with many performers presenting original music and dance. Entertainment is scheduled for every hour on both Saturday and Sunday.

Workshops, demonstrations, community information, keiki activities and a wide selection of festival foods are also offered to make it an exciting weekend. Spend a special day with your family and friends at the Nineteenth Annual Haleiwa Arts Festival. **And it's Free!**

ART
MUSIC
FOOD
FAMILY
FRIENDS
FUN
FREE!

STAGE MC: BENNIE JAMES

PERFORMING ARTS

SOUND: SOUND M.E.N.

SATURDAY

- 10AM** CELTIC PIPES AND DRUMS
- 11AM** NIGHT BLOOM
- NOON** NA LEO OH NAI ANI KAPUNA
- 1PM** KEY OF G
- 2PM** AMANDA FRAISER • VICTOR ARTIS
JEFF CIGATKO
- 3PM** STEF MARIANI • DHEYHAN'S GROUP
- 4PM** ASTASTATINE COLLECTIVE
- 5PM** RON ARTIS II

SUNDAY

- 10AM** NA WAHINE O KA HULA MAI KA PU'UWAI
 - 11AM** USAF BAND OF THE PACIFIC
 - NOON** JON Z BOWZER
 - 1PM** JUNGLE ROCKET
 - 2PM** ROOTHUB
 - 3PM** TAVANA
 - 4PM** FRIENDS OF HALEIWA ARTS FESTIVAL
- (MEET AND GREET / CD SALES AT TENT TO THE RIGHT OF STAGE)

PERFORMING ARTS COORDINATOR: RON ARTIS II

COMMUNITY4ART

HALEIWA ARTS FESTIVAL

2016 VISUAL ARTISTS

AHUE, APRIL
 AMICK, LAURA
 ARTIS, STEPHANIE
 BEACHHAM, MATT
 BEASLEY, CHARLES
 BOINAY, STEPHANIE
 BOLIOLI, EDUARDO
 BOLOKER, JUDD
 BORSA, ALANA
 BOWLES, JOSHUA
 BOYER, LYNNE
 BRADEN, BILL
 BRANSON, ROB
 BROWN, HEATHER
 BROWN, MARK
 BUTLER, CLAUDIA
 CASEY, DEBRA
 CHACON, YTALA
 CHAI, JAMEN
 CHANG, PAGE
 CHING, PATRICK
 CHESEBRO, AMBER
 CLARK, BRUCE
 COARSEY, DALE
 CONRAD, MARYLEA
 CUMMINS, FRAN/WES
 CUNNINGHAM, MARK
 DEAN, SUMMER

DECASA, DOREEN
 DEL ZOTTO, MARCELLO
 DENEKA, NICK
 DENNISON, MICHELLE
 DIHOVI, VICTOR
 DUNCAN, BENJAMIN
 EMERY, BRIAN
 FAIRLAMB, NADIA
 FEDERSPIEL, PATRICE
 FERNANDEZ, HOLLY
 FORNEY, PAUL
 FOTO, HANK
 GAGNON, DAVID
 GANZ, STUART
 GOTO, KRIS
 GOUVEIA, CARL
 GUERRERO, JERRY
 HA'O, HENRY
 HAGEMANN, SONJA
 HAMMER, AARON
 HART, AMY
 HAYASHI, NAOKI
 HECK, JEROME
 HEMMING, JEFFREY

HERNANDEZ, JOANNA
 HOLADAY, JANET
 HOLMES, MICHELLE
 HOMCY, JENNIFER
 HOOD, RHODA
 HOWARD, MARK
 IBAAN, BRIAN
 JOHNSON, JULIE
 JOHNSON, ZOE
 KEAN, STEVEN
 KIM, KEALA
 KIRBY, JULIE
 KOJIMA, GARRET
 KRZYWONSKI, MIKE
 KUCHAR, NICHOLAS
 LAM, JANA
 LAM, MISHA
 LANE-TANNER, MORGAN
 LARSEN, JEANNE
 LATRONIC, KALEI
 LEE, MICHAEL
 LEHNARDT, HARALD
 LOH, VAL
 MANLEY, JENNIFER/SCOTT

MARASIGAN, JAZZ
 MARQUESS, GAYLE
 MCGEARY, DENNIS
 MCGUIRE, ROBERT
 MEINL, STEFAN
 MENDAME, JAIME
 MORINAGA, TRACI
 MOZO, CARLOS
 MYERS, SHANE
 NEWLIN, LORNA
 O'NEAL, PATI
 O'ROURKE, JASON
 OCHOA, TANYA
 OKAHATA, MATT
 OLSEN, CARL
 PACK, VANESSA
 PALMER, ANDREW
 PARK, MARLENE
 PARKER, PATRICK
 PATRICIA, SUSAN
 PREIS, ERICA
 PUAOI, KAMAILE
 REDIGAN, COLIN
 REEDER, KAT

REVNAK, MELODY
 ROBINSON, JAMES
 ROTH, LAUREN
 RUCHABER, KIM
 SAMARIN, JASON
 SANTACROCE, CHRIS
 SEXTON, MELISSA
 SHARPE, D. MARSHALL
 SIKKINK, ANDREA
 SMITH, DENNIS/EMILIE
 SNOV, REBECCA
 SUMIDA, BARBARA
 THOMAS, EMILY
 TISSERAUD, ANGELA
 TORTORIELLO, ANTHONY
 TRICE, BOBBY
 UYEHARA, TANYA
 VIVERITO, CHRIS
 WALKER, GINA/CHUCK
 WEITZMAN, CATHERINE
 WELLES, NICK
 WHITMAN, PAMELA
 WILCOX, COLLEEN
 WILKE, BRADLEY
 WISE, BILL
 WOLFF, LEANNA
 WONG, FRANCIS

KEIKI TENT

KEIKI ARTS COORDINATOR: TINA MARKELL

- DESIGN / DECORATE HATS
- FACEPAINTING
- WAX PAPER STAINED GLASS • SAND ART
- SCRATCHBOARD • MURAL PAINTING
- WATERCOLOR • HANDPRINT FLOWERS

FESTIVAL FOOD

- WAIMANALO COUNTRY FARMS
- KE NUI KITHCEN
- QWICK STOP 1
- QWICK STOP 2
- DA TACO MAN
- UNCLE'S ICE CREAM
- THAI KITCHEN
- TIME 2 GRIND
- HAWAIIAN VINTAGE COFFEE
- NORTH SHORE FARMS
- PARADISE KETTLE CORN
- IL GELATO CAFE

BECOME A HAF MEMBER TODAY!

The Haleiwa Arts Festival would not be a reality without the continued support and efforts from its members and the hard work and energy from our Board of Directors, volunteers and patrons of the arts in our community. We are a non-profit that brings a truly wonderful art and cultural experience to the North Shore community for all to enjoy for free. **We need your help in making this happen!**

NAME: _____ EMAIL: _____
 ADDRESS: _____ PHONE: _____

GOLD	\$1000
SILVER	\$500
BRONZE	\$250
FRIEND	\$100
SUSTAINING MEMBER	\$50
BASIC MEMBER	\$25

MEMBERSHIP IS FOR THE CALENDAR YEAR.

Your Membership Counts!
COMMUNITY4ART
 HALEIWA ARTS FESTIVAL 2016

Please make checks payable to:
HALEIWA ARTS FESTIVAL
 P.O. BOX 1141
 HALEIWA, HI 96712
 For more information:
haleiwaartsfestival.org
 808.637.2277



Haleiwa Arts Festival

**ART
 MUSIC
 FOOD
 FAMILY
 FRIENDS
 FUN & FREE!**

The Haleiwa Arts Festival is a 501(c) 3 tax-exempt organization. All contributions are tax deductible in accordance with Federal law.



North Shore Chamber of Commerce News

VOLUNTEER SPOTLIGHT

A Smile – Special Delivery

The North Shore Chamber of Commerce heavily relies on the support of many volunteers who donate their time in a variety of ways. Some of the more visible contributions are those provided by the community members who staff the Chamber’s Visitor Center at 66-434B Kamehameha Highway, Haleiwa, Monday through Friday from 10 a.m. to 5 p.m. One of the more well-known volunteers is Joyce Hawkins-Alejandro, a rural mail carrier for many years in the Waialua area. For island visitors and kama’aina alike, her welcoming smile and extensive knowledge of what our area has to offer makes them happy they stopped by.

Born and raised on a farm in Minnesota, Joyce came to Oahu’s North Shore through marriage and circumstance about 45 years ago. Although her experience was limited, she says, “I needed a job bad.” Her dogged determination and a month of intense job hunting resulted in employment tending bar at the old Haleiwa Sands. Then, after seven years, “on a lark” she took a test to work for the Postal Service and “scored the highest.” Again, the stars aligned for her, and within a short time she became a full-time permanent postal carrier for the Waialua area. That was in 1980, and the job stuck for 33 years. She loved it. She enjoyed all the people she met in her routes and loved being outdoors.

When she retired 2 ½ years ago, she “luxuriated” at home for several months. After spending all those years on the road, it was time to relax and spend some “alone” time. However, after a while she realized she wanted to reconnect with the community. She had just returned from a visit to Minnesota where her brother had become involved in volunteering. That prompted her to consider it, too. She had a lot to give and wanted to do that in a way that would make a difference and be fun at the same time.

Since she had helped to start Friends of Waialua Library more than 25 years ago, volunteering there was “a given,” she says. Then a Chamber board member suggested she check into working at the Visitor Center. That was nearly two years ago. In addition, she also volunteers at the Thrift Shop which supports Wahiawa General Hospital.

So what keeps her at the Visitor Center? Three things, she says: helping the community in the best way she can; learning much more about the history of the area; and meeting people from all over the

world.

Now, with grandkids, dogs to watch out for, and her volunteer work, she says, “My life is pretty full. It’s good...”



Joyce Hawkins-Alejandro.
Photo: NSCC



New Student \$40
for 30 days of YOGA
Local residents with ID

OPEN SPACE
Y O G A

North Shore studio class schedule

Sun	Mon	Tue	Wed	Thru	Fri	Sat
9am	6:15am	6:15am	6:15am	6:15am	6:15am	7am
10:30am	9am	9am	9am	9am	9am	9am
6:30pm	7pm	6:30pm	7pm	6:30pm		10:30am

Class schedule subject to change. Please check our website.
yogaopenspace.com
66-590 Kam Hwy 2nd floor Haleiwa 808 232- 8851

BREAKFAST

7 AM to 10:45 AM DAILY



Haleiwa Town Center - 637-5095

\$2.00 Off with this Coupon

Some Restrictions Apply. See Restaurant for Details.
When Ordering Regular Priced Items. Good Anytime. One Coupon Per Person.
Can Not Be Combined with Other Discounts. Expires 08/31/2016.

OPEN LETTER TO THE NORTH SHORE COMMUNITY



It was never our intention to have the Hale'iwa Beach House become a community controversy. We sincerely believed, and still do, that restoring the very old building into a new and beautiful establishment, one that would provide meaningful job opportunities for our young people, while generating new and very much needed government taxes was a good decision.

We assumed it would be accepted, enjoyed and used by the community, and it would be a great project. We can say in all certainty, that from the first day we opened, the welcome, acceptance and Aloha given us by an overwhelming local majority, surpassed our hopes and expectations.

Too often today, new ideas and new ventures generate controversy.

We don't want to argue and dwell as to who is right and who is wrong. For those who believe we are wrong, for whatever reason, we are sorry, I personally apologize.

I can share with you as the developer, you can't undertake restoring a very tired, non-conforming 55-year-old building, with no existing plans available, charged with the legal challenges of meeting today's current city codes.... without encountering a few "gray areas" along the way. There was a surprise behind almost every wall we tore down. These surprises and fixes required unexpected, necessary field changes. To be very clear, these were not major structural discoveries. These field changes once made, then need to be addressed with the submitted City plans. You need to then go back and amend and update the plans and drawings within the City that are being processed. You're always "kind of behind" the curve.

This predicament is either misunderstood, or deliberately ignored, by some people who are unfamiliar with construction. It's not accurate or honest to describe it as "flaunting the law or abusing the system". It's just something that always occurs when doing work on an old building, be it a residence or a commercial venture.

Let there be no question that our professional people are diligently working with State and City officials to resolve the remaining "gray areas". We believe we are very close. The State Department of Health has signed off, satisfied we are in compliance, including the waste water system.

On behalf of our management team, and our Ohana of 115 hardworking, very dedicated young people I know they join with me, when we ask you ***please, come and see our house, see for yourself, and then judge.***

Thank you,

Hale'iwa Beach House
D. G. 'andy' Anderson



BANZAI NORTH SHORE WIRELESS

MAKUAKAI ROTHMAN INJURED IN BIG WAVE MEXICO COMPETITION

Former Big Wave World Champion Makuakai Rothman was injured in the first competition of the WSL Big Wave World Tour. Puerto Escondido, Mexico was the location with surf over 12 feet. Rothman suffered a blow to his ribs in the final of the event and had to pull out of the competition at that point, placing 6th. It was Grant "Twiggy" Baker (ZAF) that pulled into a perfect ten scored wave and won the title and twenty five thousand dollars. Greg Long. (USA) took second and sixteen thousand dollars. Pedro Calado (BRA) took third and eight thousand dollars. The Big Wave World Tour waiting period goes until February 28th.

LUANA SILVA GETS A PERFECT TEN AT USA NATIONAL FINAL

The North Shore's "Lulu" Silva won the USA Surfing Championship in girls under 12 division at Lower Trestles in June, winning a national title, yes she is a big deal!! The event has the best surfers under the age of 18 who qualify through Surfing America organizations around the country. Conditions were epic and Lulu scored a perfect ten in the final to take the win. Other Hawaiian chargers who won titles included Maui's Ocean Macedo in the Boys under 14 division. Brisa Hennessy from Kailua took the girls 18 and under. Hawaii surfers won 13 places in the competition equal to California surfers! Results follow:

BOYS U12:

1. Robbie Goodwin, Massachusetts, 16.56
2. Diego Ferri, Hawaii, 15.03
3. Maikai Burdine, Hawaii, 11.53
4. Kai Martin, Hawaii, 8.10

GIRLS U12:

1. Luana Silva, Hawaii, 16.00
2. Ewe Wong, Hawaii, 5.67
3. Sawyer Lindblad, California, 3.83
4. Ava McGowan, Florida, 3.50

BOYS U14:

1. Ocean Macedo, Hawaii, 16.77
2. Brodi Sale, Hawaii, 14.63
3. Kade Matson, California, 14.60
4. Jett Schilling, California, 11.20

GIRLS U14:

1. Caroline Marks, Florida, 15.90
2. Alyssa Spencer, California, 12.83
3. Samantha Sibley, California, 12.70
4. Kirra Pinkerton, California, 12.13

BOYS U16:

1. Crosby Colapinto, California, 15.60
2. Barron Mamiya, Hawaii, 14.33
3. Kade Matson, California, 13.40
4. Robbie McCormick, Florida, 10.27

GIRLS U16:

1. Caroline Marks, Florida, 16.27
2. Summer Macedo, Hawaii, 14.24
3. Keala Tomoda-Bannert, Hawaii, 12.50
4. Alyssa Spencer, California, 5.00

BOYS U18:

1. John Mel, California, 17.50
2. Noa Mizuno, Hawaii, 15.70
3. Cole Houshmand, California, 14.66
4. Kaulana Apo, Hawaii, 8.73

GIRLS U18:

1. Brisa Hennessy, Hawaii, 15.67
2. Caroline Marks, Florida, 15.50

3. Kirra Pinkerton, California, 12.77

4. Samantha Sibley, California, 11.84

SUNSET BEACH SURFER ZOE MCDUGALL ON THE MOVE

Another North Shore surfer killed it in South Africa, winning a junior event. Zoe McDougall has been on the move traveling the world and making her mark on the WSL QS tour also and has been ranked around 50th for two years. With two Junior events so far in Hawaii she is rated second overall. Good news is that a new WSL Junior event has been added in October at Turtle Bay. That will be a show down for sure with Hawaii's top women surfers battling it out. Wanna compete? All 18 and under athletes must register online with the member pro section and registration closes for this event on September 13th at 2pm HST. Contact Bert Ishihara for information. bishimaru@worldsurfleague.com.

BRAZILIAN SHOW ROOM A ONE STOP SHOPPING SPOT

Brazilian Show Room has been serving our community for over 12 years with really good customer service. It's not so easy to go buy a new bathing suit but the crew at the two shops make it a pleasant experience. Customer service has been the shops creed since they opened. They are located in the North Shore Market Place right by Banzai Sushi and in Kailua. Find them and find the newest bikini fashions, suits to surf in and insane apparel. They have new designers in all the time, a super cool shop that supports Women surfers!! LOVE!

FIRST WOMEN'S PRO CONTEST SERIES FOUNDERS ARE ARE INDUCTED TO THE "SURFING WALK OF FAME" IN CA.

It's Official! The Women's International Surfing Association, WISA, founded in 1975, is going to be inducted in the Surfing Walk Of Fame 2016 on July 28th in Huntington Beach! Congratulations to the founders listed below who could see the future of Women's pro surfing. This ceremony will happen in conjunction with the US Open in July. The US Open is one of the largest surf competitions in the world!

Honor Roll 2016

- 1) Jericho Poppler
- 2) Mary Setterholm
- 3) Mary Lou McGinnis Drummy
- 4) Terry Eselun
- 5) Shannon Aikman
- 6) Duline McGough
- 7) Linda Westfall
- 8) Karen MacKay
- 9) Pam Maher
- 10) Jan Gaffney
- 11) Liz Irwin
- 12) Catherine Rossett



Lulu Silva from V-Land Won at Surfing America Photo: banzaibetty.com



Pūpūkea Ball Court

Rejuvenation Project

Mālama Pūpūkea-Waimea needs YOUR help to refurbish our community basketball court!



Existing Court



After Rejuvenation

Aloha! We finally have the chance to refurbish the Pūpūkea Beach Park basketball court, but we need your kokua! Thanks to the coordinated efforts of the community non-profit group Mālama Pūpūkea-Waimea, City Council Chair Ernie Martin, and North Shore resident Mike Newman, the City & County of Honolulu has approved a plan to restore the court.

Our once vibrant hub of community activity has languished in total disrepair for far too long, but Mālama Pūpūkea-Waimea and the City's Department of Parks and Recreation signed an agreement to create a public-private partnership to refurbish the park, including court reconstruction, new chain link fencing, and other upgrades.

Plans have recently been drawn and approved, and we need your help! Please give what you can, your generous donations are appreciated.

Donations to support the project are tax deductible, and should be made out to:

Mālama Pūpūkea-Waimea Special Account

P.O. Box 188 Hale'iwa HI 96712

For more information please e-mail PupukeaBallCourts@gmail.com or call 808-388-2823



City Council Chair Ernie Martin with Maxx Phillips, Managing Director of Mālama Pūpūkea-Waimea

BULLETIN BOARD



Specializing in vegetarian foods, vegan foods, whole foods, organic food. Wheat free, dairy free, raw foods, gluten free. A complete selection of natural foods for 41 years. Make earth day, everyday. Open 7 days. Mon.-Sat. 9am-7pm. Sun. 9am-5pm

66-445 Kam. Hwy
Haleiwa, Hawaii 96712
Next to the Post Office
808-637-6729 • 808-637-1922 fax



LIC. #AG 18275
GENERAL ENGINEERING CONTRACTOR
Full Service Sitework Contractor
Septic Systems & Tanks
Since 1978
Michael Cowper 638-7200
cowperhawaii.com

N-C PLUMBING & SUPPLY

Cont. Lic. No. C-8913

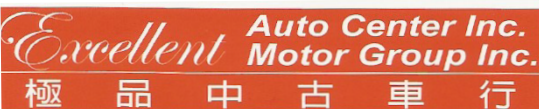


- RESIDENTIAL & COMMERCIAL SALES & SERVICE
- CONTRACTING & DESIGN • HOME PLUMBING SERVICE
- PLUMBING FIXTURES, HEATERS • FREE ESTIMATES

Nestor P. Calilao (Owner) Bus: 637-8662
P.O. Box 769 Res: 638-5157
Waialua, HI 96791 Cellular: 372-8718

BOW WOW BUNGALOWS

Licensed Boarding Kennel
North Shore, Oahu
Reasonable Rates
Ph. 637-2562
These Dogs Have Fun!



Alfred Wan
Sale & Fiancial

1190 Dillingham Blvd., Honolulu, Hawaii 96817
Tel: (808) 946-8899 Cell: (808) 230-3188 Fax: (808) 841-8838
E-Mail: kingwan91@yahoo.com Web-site: www.excellentmotorgroup.com

Shannon Ayonon, LMT
MAT#14274

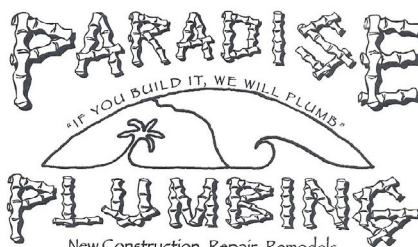
Heavenly Touch Mobile Massage Services
Also at North Shore Salon & Spa
Call to schedule your appointment
(808) 352-2677
Salon 637-8089
Insurance Accepted with Dr.'s Approval

Munden Design & Build

Lic.#BC19632

Design • Plans • Permits • Construction
Additions & New Residences
808 391-8616

Providing quality work since 1978



New Construction, Repair, Remodels
Dale Christensen C-29856 (808) 368-1473

GREEKZ > leakz

Greekzplumbing.com C-32939

Plumbing repair & service

372-1820

The Lawn Ranger-

*We put the law back into your lawn,
no yard too hard,
no lawn too far gone...*

**Trees, hedges, hauling,
multi acre properties.**

Fully insured, 25 years experience.

258-6439

**NOW ACCEPTING APPLICATIONS FOR THE
2016-2017 SCHOOL YEAR**

67-340 Haona Street • Waialua, HI 96791



- Faith Based
- Academically Challenging
- Family Environment
- Affordable Tuition

**Now accepting
2 year olds!**

Please call 637-7772 or email us at stmichaelhi@hawaii.rr.com for more information.
We look forward to hearing from you.
Visit our website at www.stmichaelschoolhi.com

Serving the
North Shore Community



**WAIALUA
FEDERAL CREDIT UNION**

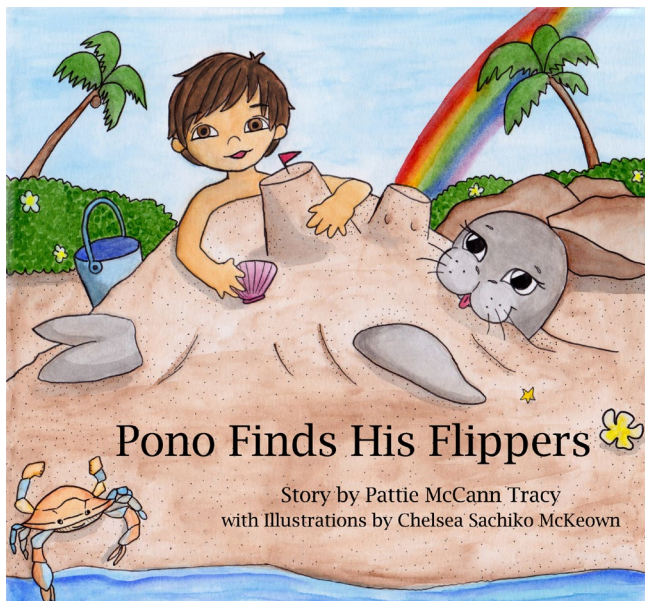
67-292 GOODALE AVE #A2
(808) 637-5980
www.waialuafcu.com

Visit us today.

Pono Finds His Flippers

New keiki book promotes friendship and bravery, perfect for the summer. Former swim instructor and University of Hawaii, Manoa alumni Patti McCann Tracy captures the fear, courage, thrill and joy young children experience when learning to swim in "Pono Finds his Flippers." Pono and his BFF Lani, a Hawaiian monk seal embark on joyous adventures by land and sea through friendship and love.

For more information visit: www.ponofinds.com



WAIALUA PUBLIC LIBRARY UPCOMING EVENTS

Waialua Crafters

Wednesday, July 6 at 4:30PM
 Bring your current craft project and share tips!

MEADOW GOLD DAIRIES PRESENTS

Lani Moo & Calci Calcium / Nutrition Show

Thursday, July 7 at 3PM
 Keiki can learn the importance of healthy eating and exercise. Photo opportunity immediately following 20-minute program.

Waialua Writers' Group

Saturday, July 9 at 11AM
 Topic of the Month: "My First Memory"

Waialua Used Book Sale

Saturday, July 16 from 9AM to 2PM
 Book Hunting At Its Best!

2016 Summer Reading Program Finale

Saturday, July 16 at 10AM
 Featuring: **MAGICIAN GLEN BAILEY** & pizza party

Waialua Readers' Group

Thursday, July 28 from 9:30AM to 11AM
 Pick of the Month: "A Little Paris Bookshop" by Nina George

Re-Occurring Waialua Library Events

Computer Instruction - Fridays at 9AM
 Toddler Time - Fridays at 10AM
 Children's Storytime & Crafts - Saturdays at 10AM

North Shore News



2016 Schedule

PUBLICATION DATE	EDITION	DEADLINE DATE
July 20	#15	July 8
August 3	#16	July 22
August 17	#17	August 5
August 31	#18	August 19
September 14	#19	September 2
September 28	#20	September 16
October 12	#21	September 30
October 26	#22	October 14
November 9	#23	October 28
November 23	#24	November 11
December 7	#25	November 25
December 21	#26	December 9

Direct-Mailed to Every Home
 MOKULEIA • WAIALUA • HALE'IWA • KAHUKU • LAIE
 Every Other Wednesday • 12,000 copies

"The North Shore's most popular publication" since 1970
 (808) 637-3138 • NShoreNews@aol.com • NSN4Linda@aol.com
www.northshorenews.com

MAHALO!
 From the
North Shore Food Bank
 donations of non-perishable
 canned
 goods are accepted at the
North Shore News Office
637-3138

Haleiwa Evangelical Mission International
 Come and join us
**Sunday's at Waialua
 Elementary School Cafeteria**
Sunday School at 9:00 am
Worship Services at 10:00 am
 For Prayer
 Call 637-4567
Blessed to be A Blessing

"Children's Church"



CLASSIFIEDS

The North Shore News is published every other Wednesday and mailed free of charge to all North Shore homes and businesses. Extra copies may be obtained at our office.

PRESS RELEASE POLICY: Submit press releases in person or by fax, mail or email to Editor, North Shore News, 66-437 Kam. Hwy., Suite 210, Haleiwa, HI 96712. Please type your releases and keep them shorter than 200 words unless they are of an unusual news interest. Releases should be viable news stories and are published on a **space available basis only**, with priority given to those received in our office first. You may attach photos. We are not responsible for the return of any photos. All materials are submitted at owner's risk. We reserve the right to edit and/or refuse all submissions including advertising.

EDITORIAL POLICY: We welcome articles and letters from our readers. Letters to the Editor are published on a space available basis only and preference is given to shortness of length, and quality of content. We prefer to run not more than one letter, per person, per 6 month period. Letters subject to edit.

Views expressed by our contributing writers and advertisers do not necessarily reflect the view of the management and staff of the North Shore News. All rights reserved. Reproduction in whole or part without permission is prohibited. © 2016.

Editor & Classifieds

Linda Seyler

Typography

Downtown General Store

Contributing Writers

Tom Jacobs

Betty Depolito

Naty Hopewell

City Councilman Ernie Martin

State Representative Lauren Matsumoto

State Representative Feki Pouha

Senator Gil Riviere

Malia K. Evans

Blake McElheny

Photography

Banzai Productions



Please recycle this newspaper.

SERVICES

SHORE ELECTRICAL SERVICE
New Const-Remodels
638-0049 / Lic#C20777

Computer Problems?
I can fix any MAC or PC.
Chris 371-3089

Andres Plumbing
All your plumbing needs
808-256-7337 Lic#C24500

North Shore Pumping
Septic and Cesspool Services
Clifford 638-0900 • 291-5099

NS Cleaning LLC
Vacation/Residential/Commercial
Nancy 808-798-7423 Bonded

Carpentry & Painting Services
Repairs/Remodeling,
Termite Rot, Doors, Cabinets,
Countertops, etc.
Reasonable Rates 271-6584

Dog/Cat Nail Trimming
At your home \$15.00
637-5395

HANK'S WELDING
Certified, mobile, fabrication &
installation services. Specializing
in stainless steel welding.
386-3992

Green Gypsy Thrift Shop
Waialua—(808) 366-4000
Next to Paalaa Kai Bakery

QUALITY HOME REPAIRS
And Maintenance
JONNY SOUZA 339-4330

Radiant Skin Care & Waxing
Aynjul Benigno
Licensed Esthetician
Call or Text 808-222-8124
RadiantSkin13@gmail.com
66-935 Kaukonahua Rd.,
Waialua



Like us on Facebook:
[Facebook.com/NSNewsHaleiwa](https://www.facebook.com/NSNewsHaleiwa)

Paumalu Electric Inc.
C 18074

Residential & Commercial
New Installation & Repairs
Renovations. Remodels
Electric Meter Replacements
Complete Install for Solar PV
Dave Hancock 638-9054

Hawaii Tree Co.
Trimming & Removal
Professional-Reliable
Free Estimates
462-2749

PIANO LESSONS
Guitar, Ukulele, Bass,
Singing, Songwriting
637-4635

North Shore Car Rentals
Low cost rental cars.
Rates are low by providing
slightly older cars with a
"local" vibe to them, don't
be fooled. All vehicles are
well maintained and safety
inspected. please visit
northshorecarrentals.com or
call (808) 260-4960.

WILLY'S PAELLA CO.
Traditional Paella.
All fresh ingredients, salad
included, served from
authentic pans, prepared
on site at your location.
Please contact:
(808) 216-6970
Willyspaella@gmail.com

For Advertising Rates
Call 637-3138 or go to
www.northshorenews.com

BIKRAM YOGA
BUILD STRENGTH,
FLEXIBILITY & BALANCE.
BEGINNERS TO ADVANCED
Please call for class schedule
637-5700

Your Clean Home
Vacation/Residential
Home Cleaning
Affordable • Reliable
• Green Cleaning
For Free Estimate
Call 782-9941

BOBBY'S BODIES
Tuesday evenings at 5:00 p.m.
• Body Toning
• Cardio Pump/Fat Burner
For more info: call Bobby, owner of
BOBBY'S BODIES at 637-4150

North Shore
Auto Detailing
Mobile Service-We Come to You
Billy Ching
808-371-0854

MASSAGE THERAPY
in Haleiwa/Waialua: Sports,
deep tissue, trigger point,
Swedish, neck, shoulder, mid-
low back, sciatic, foot, active
resistive stretching, myofascia
release, Gift Certificates.
25 years licensed experience.
Ask for Allen 638-0346 @
North Shore Sports Therapy

LEARN TO SWIM
AT THE
HAWAII SWIM
SCHOOL
ON THE NORTH SHORE
Developing swimmers since 1982
Haleiwa Rd. at Smiley Place
637-4863

HOW TO CONTACT THE NORTH SHORE NEWS

Letters to the Editor, and other items submitted for publication consideration may be sent to us via:

MAIL: 66-437 Kamehameha Hwy., Suite 210, Hale'iwa, HI 96712

E-MAIL: NShoreNews@aol.com

PHONE: (808) 637-3138

Office Hours: Monday – Friday 10 a.m.-3:30 p.m.

www.northshorenews.com

CLASSIFIED ADS

Next Issue - July 20, 2016
Deadline Date - July 8, 2016

HARVEY'S TOWING LLC
 24 hr Towing Service
 Lockouts, Jumpstarts &
 Recovery. Specializing in
 opening locked car doors.
 Call anytime 478-0333

Aloha Computer
 PC Repair/Virus Removal
 Fax/Copy/Internet Access
 372-2667 or 237-4558

BUSINESS SERVICES CENTER
 Fast & Convenient Copy, Fax, Scan,
 Computer/Internet, Laminate, & More

 Across from
 the Haleiwa
 Post Office
 637-4558 • gonorthshore.org
 #gonorthshore

Classified Ad Rates
 3 lines (min.) \$18.89
 4 lines \$25.13
 5 lines \$32.45
 1" Box Ad \$41.88
 (27 characters in each line)
 Include your contact information.
 *Ads can be dropped off in mail slot,
 mailed, or emailed. Pay by check payable to:
 North Shore News or credit card by phone order.
 We reserve the right to refuse any
 advertisement with a full refund.
 North Shore News • 66-437 Kam. Hwy.,
 Suite 210, Haleiwa, HI 96712
 • (808) 637-3138 • NShoreNews@aol.com


Marianne Abrigo, Properties
 Specializing in -
 North Shore
 Real Estate
 Ask for our list of available
 properties and/or a
 free market analysis.
Marianne M. Abrigo
 "Realtor since 1974"
 Office 637-3511
 Fax 637-0777
 Email mabrigo222@aol.com

ANGELS PLUMBING
 Repairs
 Remodeling
 Renovation
638-7878
 Lic. #C12004


North Shore Ukulele Lessons
 Learn to sing and play your
 Favorite songs! Contact:
 Northshoreukelelessons808
 @yahoo.com
 All ages and skill levels!
 Instructor: Emily Abrigo

SPRINKLERS
 469-7922 - James
 30 yrs exp.
 Auto/Clocks/Valves/
 Wires/Drip
 Repair Install

HELP WANTED

BUSSERS/SERVERS
 Pizza Bob's in Haleiwa is looking
 for BUSSERS/SERVERS. Experi-
 ence preferred. Apply in person
 at 66-145 Kam. Hwy.

COOKS/KITCHEN HELP
 Pizza Bob's in Haleiwa is looking
 for kitchen personnel. Experi-
 ence preferred, but will consider
 training the right people. Apply
 in person at 66-145 Kam. Hwy.

Luibuenos Mexican & Latin
 Cuisine. Now hiring:
 dishwashers, cooks, preps,
 AM/PM and all front of house.
 silva@luibueno.com

**Retail Sales
 Surf & Sea**
 Hawaii's Ocean Sports Headquarters
 is always looking for hard working,
 energetic people to become a part
 of our sales team. Good pay, bonus,
 benefits. Japanese speaking a plus.
 Ocean sports experience and
 dive instructor wanted. Please
 contact surfnsea@surfnsea.
 com for details.
 Apply in person daily 9am-7pm
 62-595 Kam. Hwy., Haleiwa

Animal Rescues & Investigations
356-2256

HOUSEKEEPER
 Full time (40hr/week) on
 private gated North Shore
 estate. \$11.00/hr + Medical/
 dental, vacation/holiday pay.
 Experience preferred but
 willing to train. Call 838-1202

FOR RENT

TABLES & CHAIRS
780-8037

Haleiwa Food Truck Location
 High visibility in Downtown Haleiwa.
 Directly on Kamehameha Highway.
 Newly poured concrete platform. Wa-
 ter and electric hook-up, separately
 metered. Parking available for cus-
 tomers. For lease, call Kurt 838-1202

MISCELLANEOUS

LEARN TO PLAY TENNIS
 Group Tennis Lessons For
 Youths and Adults
 Classes for ALL Skill Levels
 Racquets & Balls Provided.
 Register Today 808-585-9530
 hawaii.usta.com

MICROCHIP MADNESS
 July 1-31
 Get your cats and dogs
 microchipped in July for \$10.
 Thanks to a partnership with
 veterinarians islandwide.
 View participating clinics at:
 HawaiianHumane.org

Have you tried that CRAZY WRAP
 THING for your stomach. It tightens,
 tones and firms in as little as 45 mins,
 reduces appearance of cellulite, gives
 you fast & lasting results from a
 botanically based formula. For more
 information contact:
 anuheaseyler.myitworks.com

North Shore Food Bank
 Food bag distribution
 Wednesdays at Haleiwa
 Gym across from
 Post Office
 9am-12pm

AA MEETINGS
 Sun- 10am Kaiiaka Park
 Tues- Waimea Church
 Nooners
 Big Book, Cottage #2-8pm
 Wed- Lava Ladies,
 Cottage #2-6pm
 Primary Purpose,
 Cottage #2-8pm
 Thurs- Cottage #2-8pm
 Fri- Cottage #2-5pm
 Sat-Pancake Meeting,
 Cottage#2-6:30am,
 Cottage#2-8pm

Pickle Ball
 at Waialua Community
 Association Gym
 July 8 & July 22
 5:30pm-9:30pm
 Come see what this fun
 game for all ages is about
 and maybe even try it out!

FREE ADS
 Garage & Yard Sales,
 Reunions, Lost & Found.
 Email ad to:
 NShoreNews@aol.com

**HARBOR CHURCH
 NORTH SHORE**
 In the country for
 the country
Worship Service
 9:30 a.m.
 at Waialua High School

OFF da ISLAND
 Are you leaving Oahu on vaca-
 tion or business? Do you live on a
 neighbor island, the mainland or
 foreign country and subscribe to
 the North Shore News? Try send
 us a photo of someone in front
 of a sign or landmark holding a
 copy of the NSN. Email your photo
 along with the person or persons'
 name, community of residence,
 telephone number and photo loca-
 tion to: NShoreNews@aol.com.

**Hazardous Waste
 Information Line**
768-3201

Haleiwa Shingon Mission
 Bon Dance
 July 22 & 23
 7:30 p.m.-10:30 p.m.
 66-469 Paalaa Rd.

THANK YOU EVERYONE
FOR SUPPORTING
WAHIAWA GENERAL HOSPITAL



CONTINUED COMMITMENT TO THE COMMUNITY

- 24-HOUR EMERGENCY ROOM**
- RADIOLOGY AND LABORATORY SERVICES**
- TELESTROKE SERVICES (VIDEO-LINKED TO QUEENS MEDICAL CENTER)**
- WOMEN'S MAMMOGRAPHY CENTER**
- SKILLED NURSING**
- SPECIALTY CLINIC (CARDIOLOGY, NEPHROLOGY, UROLOGY, INTERNAL MEDICINE)**

128 LEHUA STREET ❖ WAHIAWA, HI 96786 ❖ 808-621-8411