



**"E Ala Na Moku Kai Liloloa"**

In This Issue:  
 Waimea Valley Events  
 Page 3  
 Town Hall Meeting  
 Page 9  
 Beach Clean Up  
 Page 16



NORTH SHORE NEWS March 29, 2017 VOLUME 34, NUMBER 6



Barron Mamiya pulls into one of two tube rides in the final for the win! Photo: Banzai Betty.com

## Barron Mamiya Wins Pipe Pro Junior

North Shore's own Barron Mamiya, 16, wins his 3rd consecutive victory at the World Surf League (WSL) Pipe Pro Junior in epic

conditions. Pipeline was flawless for the one day event with highest scoring performances by all. Barron pulled into two deep barrels

for the win. Congratulations to all the finalists- Barron Mamiya (1st), Eli Hanneman (2nd), Finn McGill (3rd), & Cody Young (4th).

PRE-SORTED STANDARD U.S. POSTAGE PAID Honolulu, Hawaii Permit No. 1479	Hale'iwa, HI 96712 66-437 Kamehameha Hwy., Suite 210
--	---

PROUDLY PUBLISHED ON THE  
 North Shore of Oahu  
 Home of  
**Jerry's Pizza**



## OFF da Island in Tracy, California

Waiialua resident Frances Hodge took a trip to Tracy, California to visit her daughter who manages the Paradise Road Ranch-Thoroughbred Farm. Of course, Frances brought along a copy of the North Shore News to share with her daughter to remind them of the good times back on Oahu's beautiful North Shore. For more information on the OFF da Island campaign turn to page 23.

66-037 Kam. Hwy., Ste. 3  
Haleiwa, next to Growing Keiki

**Saccoccio & Lopez**  
ATTORNEYS AT LAW  
*Serving Haleiwa since 1984*

*Bankruptcy  
Personal Injury • Criminal Law  
Landlord/Tenant  
Traffic Offenses • DUI*

**Family Law**  
*Adoption • Custody • Divorce  
Paternity • Guardianship  
Deeds, and Wills*

Notary Public

**637-7611**  
VISA/MC Accepted

*Paul & Nita*

## The Haléiwa Family Dental Center, Ltd.

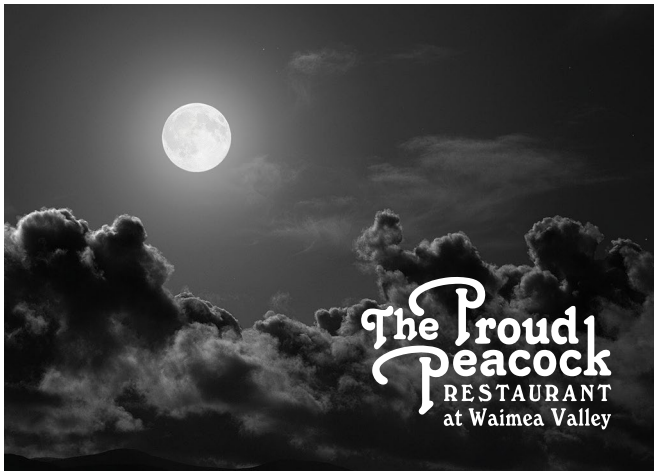


now offering the  
**ORAL B GENIUS TOOTHBRUSH**  
at a **BLOWOUT PRICE**

- \$77 after \$20 rebate—your price is lower than our cost
- Proven to be the best toothbrush
- Bluetooth capable with your smart phone
- Package includes: Genius toothbrush, 4 brush heads, toothpaste, mouthwash & floss
- Offered at this price to promote dental health. Do not have to be our patient to take advantage of this incredible deal.
- Children's bundle available for \$37

Provided by Dr. Todd Okazaki and Staff

Conveniently located behind First Hawaiian Bank in  
Historic Haléiwa Town  
Call 637-9652 for information



## Dinner Buffet & Moon Walk

Saturday April 8 / Dinner 6pm, Moon Walk 8 - 9pm

Experience the Valley at night! Buffet dining at the Proud Peacock Restaurant, followed by a moonlit walk to the waterfall



## Easter Brunch & Egg Hunt

Saturday April 16 at the Pikake Pavilion  
*FREE Valley Admission with All Brunch Reservations*

Family-style brunch followed by an egg hunt for keiki – reservations recommended! Visit [waimeavalley.net](http://waimeavalley.net) or call (808) 638-5000 to reserve



## Kōkua Hawai'i Foundation Benefit Dinner

Thursday April 13 / 6:30pm at the Proud Peacock  
*\$75 KHF Members (\$100 Non-Members, Includes Individual Membership)*

Seated 5-course, locally-sourced meal by Ke Nui Kitchen chef Thomas Naylor with a complimentary cocktail and wine; tickets/details at [eventbrite.com/e/32963267019](http://eventbrite.com/e/32963267019)



## Hale'iwa Farmers' Market

Thursdays 2 - 6pm at the Pikake Pavilion

Join us every Thursday, rain or shine, at this award-winning weekly market featuring fresh produce, local vendors, arts and crafts, and live music



Waterfall, Botanical Gardens, & Cultural Activities

On the North Shore Across from Waimea Bay

Open 7 Days a Week, 9am - 5pm

Call: (808) 638-7766

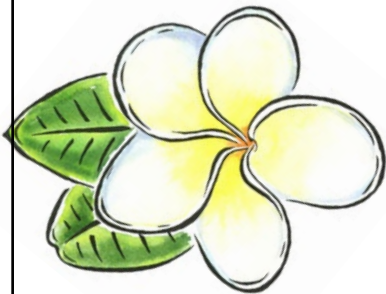
WHERE HAWAII COMES ALIVE

WAIMEAVALLEY.NET

# Why Knott Florist and Lei Stand NOW OPEN

Wed/Thurs/Fri/Sat – 9:00 a.m.–5:00 p.m.  
Sun/Mon/Tues – pick up by appointment

Lei, Arrangements, Bouquets, Corsages,  
Orchids, Succulents, Tropical and more...



Waialua Shopping Center  
Across from Jerry's Pizza  
**(808) 637-9380**



## Sundance Spas

Building the most loved spas for over 35 years! We support our troops and are proud sponsors of Wish For Our Heroes.

Visit our website at:  
[sundancespasofhawaii.com](http://sundancespasofhawaii.com)



**COME VISIT OUR  
SHOWROOM!**  
3140 KOAPAKA ST.  
HONOLULU, HI 96819  
808-833-6046



## The Army Pacific Brass Band 25th Infantry (Schofield Barracks) **Sunday Concert**

April 2, 2017  
4:00 p.m.–5:30 p.m.  
Waialua Bandstand

This brass quintet will entertain us.  
Come enjoy!

[www.waialuabandstand.com](http://www.waialuabandstand.com)



**Council Chair Emeritus  
Ernie Martin**

**Serving You in District 2**

**North Shore Parks Site Visits**

On Monday, March 13th, Councilmember Ann Kobayashi, Chair of the Parks, Community and Customer Services Committee, State Representative Sean Quinlan, Director Michele Nekota of the Department of Parks and Recreation and I visited three parks on the North Shore to discuss maintenance, park usage and other concerns with members of the North Shore Neighborhood Board and the community.

The three site visits included Waialua District Park, Haleiwa Beach Park and Alii Beach Park. At Waialua District Park, the community rallied around the need for the replacement of the Waialua District Park field lights and swimming pool lights. Sports leagues, and community groups have not had been allowed permits for use of the field at night due to the field lights being removed. The Waialua High and Intermediate swim teams have also been displaced. The removal of the lights were a safety issue, but it is one of my top priorities to include additional funding in the upcoming budget so the light projects continue to move forward and bring such a heavily utilized resource back to our community.

North Shore Neighborhood Board Parks Committee Chair Mike McNeace also shared the community's desire for a skateboard park at Waialua District Park or Haleiwa Beach Park. At Haleiwa Beach Park, the repair of the retaining wall, and a possible T-groin to replenish the sand in the area were discussed. As for Haleiwa Beach Park Mauka, the canoe halau remains an important request.

At Alii Beach Park the focus was on the rehabilitation of the John Kalili Surf Center. The second floor of the Surf Center remains closed due to safety issues since it was constructed as a film set for Baywatch Hawaii in 1999 and handed back to the City and County of Honolulu in 2001. Over the years there has been discussion on how best to utilize the second floor of the Surf Center for storage, youth services or offices. I have appropriated funding in the past and will continue to support the rehabilitation of this unique facility.

The Honolulu City Council is currently in the midst of working on the City and County of Honolulu's Capitol and Operating Budgets for the upcoming fiscal year. I will be advocating for funding to support projects in our district.



*Council Member Ann Kobayashi, Council Chair Ernie Martin, State Rep. Sean Quinlan & Dept. of Parks & Rec. Director Michele Nekota.*

**Register for Pre-Kindergarten Class at Waialua Elementary before April 28, 2017. For more info call 637-8228**

**PAALAA KAI BAKERY**

*"Your Hometown North Shore Bakery"*

**Freshly made Smokies, Turnovers, Ensamadas, Doughnuts, Brownies, Long Johns and more!**

ENSAMADA



BROWNIE



SMOKIE

[www.pkbsweets.com](http://www.pkbsweets.com)



# Asia Pacific International School

54-230 Kamehameha Hwy., Hauula, HI 96717  
(808) 670-1900 | [www.apishawaii.org](http://www.apishawaii.org)

## Nurturing Future Leaders of the New Pacific Century

### Quick Facts:

- Private, nonprofit K-13 school, fully accredited by the Western Association of Schools and Colleges (WASC) and licensed member of the Hawaii Association of Independent Schools (HAIS). Five and seven day boarding options available for all middle and high school students.
- A beautiful 97 acre campus in Hau'ula, (North Shore, Oahu) providing an abundance of exciting outdoor educational opportunities
- Non-denominational Christian school that welcomes students of all religious and cultural backgrounds.

### Academics and Educational Philosophy:

- Personal and relational education: Teachers know their students, and are committed to their success.
- Rigorous, American curriculum with commitment to international education and global citizenship.
- Foreign languages offered: Mandarin Chinese, Japanese, Korean
- Project Based Learning: Students master academics through hands-on projects that interest them.
- Students practice and are assessed on the 21st century skills of critical thinking, cooperation, communication, creativity, & Cultural Citizenship



### New Elementary Division Opening!!:

- Features small, multi-aged classes focused on experiential learning (1:5 student to teacher ratio)
- Experiential learning - APIS students get outside the classroom and bring active learning into the classroom.
- Social-emotional development - APIS creates a warm, familial environment in which students cultivate empathy, self-control, social awareness, integrity, and grit in a safe, supportive community.
- Personalization - APIS unleashes each child's passion to learn & develop the curiosity, knowledge, skills, and personal qualities needed for a happy and successful life.



### Schedule a Visit:

Call or email our admissions office now to learn more or to schedule a personalized tour of our beautiful campus.

Ph: 808-670 1909

Email: [admissions@apishawaii.org](mailto:admissions@apishawaii.org)



**ASK THE DOCTOR**  
**Jason Hughes**  
Chief Medical Officer  
Kahuku Medical Center

*Q. When should I worry about an infection?*

A. It's good practice to keep a close eye on all infections. Some bacteria have become resistant to certain antibiotics, and identifying the infection quickly allows the physician to provide the right treatment.

As a rule of thumb, if the skin around the area is warm, swollen and red for more than a day, or if something is draining from the area, see a doctor. If you develop fevers, chills or body aches, or if the area rapidly worsens including swelling, blisters or redness, see your doctor or go to the emergency room immediately.

Resist the urge to stick anything into the swollen area—opening the skin allows even more bacteria to swarm in.

We live in a tropical environment—exactly the warm and wet atmosphere bacteria love. Many types of bacteria can infect the skin. The most common are Staphylococcus (staph) and Streptococcus (strep).

We see a considerable amount of impetigo, which is most common in children but can occur in adults. It often starts out as pimple-like sores surrounded by red skin usually on the face, arms and legs. The sores fill with pus, break open after a few days and form a honey-like crust as they spread. They itch and scratching is tempting, but that can spread the sores to other areas of the body.

Because impetigo is contagious and spreads through direct contact, avoid sharing things like towels. When you see signs of impetigo, call your doctor for a treatment plan or drop by our Primary Care Clinic.

Check out our web site at: [www.kmc-hi.org](http://www.kmc-hi.org)

Do you have a medical question for Dr. Hughes? Email him at [askthedoctor@kmc-hi.org](mailto:askthedoctor@kmc-hi.org)



**KAHUKU MEDICAL CENTER**

New Student Special **30 days unlimited YOGA for \$40**

**OPEN SPACE**  
YOGA  
North Shore Studio

Daily Class-Workshops-Teacher Training- Ayurveda Consultation

66-590 Kamehameha Hwy Suite 2D (808) 232-8851  
[YogaOpenSpace.com](http://YogaOpenSpace.com)

**Linda Yadao**  
BASI CERTIFIED

808.637.1230  
[lindayadao@gmail.com](mailto:lindayadao@gmail.com)

**Maluhia Place**  
A PILATES SPACE

**PAALAA KAI BAKERY**  
*"Your Hometown North Shore Bakery"*

**GET 10% OFF ON ORDERS WITH 3 DIFFERENT PASTRY ITEMS** **OR** **15% OFF WITH 5 DIFFERENT PASTRY ITEMS**

*Lots to choose from!*  
**Snow Puffies**  
**Sada's Malassadas**  
**Smokies**  
**Ensamadas**  
**Long John**  
**Fudge Brownies**  
**Cinnamon Finger Puffs**  
**Butter Rolls**  
**Turnovers**  
**Doughnuts**  
*and more!*

*This offer is valid from March 22 - April 5, 2017. Offer cannot be combined be combined with other promotions, discounts, of daBest VIP card.*

**[www.pkbsweets.com](http://www.pkbsweets.com)**



**Representative  
Lauren  
Matsumoto  
Serving You in District 45**

Aloha Friends, Family, and Neighbors!

I wanted to let you know that the entire House of Representatives has been experiencing issues with e-mail service for the last few months, and it was only discovered recently. I apologize if you emailed my office and haven't received a response; the lack of response was due to the fact that we never received the email. If you have any issues or concerns to bring to my attention, please send an email to [repmatsumoto@capitol.hawaii.gov](mailto:repmatsumoto@capitol.hawaii.gov) and also give my office a call at 808-586-9490 to ensure that we've received your message. I apologize for any difficulties this may have caused you.

Along the lines of providing information, I will be hosting a town hall with Senator Gil Riviere and Representative Sean Quinlan, on April 4th at Waialua Elementary School Cafeteria (67-020 Waialua Beach Road) from 7:00 p.m. to 8:30 p.m. to go over bills that are moving through the legislature. Your input is truly valued, so please join us!

My office sent out a Community Participation Survey in early March to gather your opinions on issues being addressed this Legislative Session. If you have any questions or if you've lost your survey, please call or e-mail our office and we would be happy to send you another print or digital copy. Also, there was a misprint in the survey – please skip question #5 or do the survey online at [repmatsumoto.com](http://repmatsumoto.com). To best represent your interests, I would love to hear from you!

As the Capitol buzzes, we're approaching the home-stretch of the 2017 Legislative Session. Visit the Hawaii Legislature online at [capitol.hawaii.gov](http://capitol.hawaii.gov) and make your voice heard by submitting testimonies on measures important to you. In addition, I would like to inform the community of an affordable housing opportunity at Kunia Village. This information is important if you work or retired from a farming operation and or know of friends or family who would be eligible for this housing.

If you're a farmer, work on a farm, transport produce, or work for an aqua farm, Kunia Village could be your new home! Located on the site of the former Del Monte Plantation Camp in the Central Oahu farm belt, Kunia Village is an affordable agricultural-aquacultural worker housing managed by EAH Housing.

The new affordable housing opportunity available in Kunia for those who work or have retired in the agricultural and/or aquacultural industries. The Kunia Village will have 82 single family homes

containing 2, 3, 4, or 5 bedrooms, all of them single-story wooden structures. The rent will not exceed 30% of the household's income, but the household income must be under 60% of the area median income according to government regulations. More information on eligibility is available upon request.

Kunia Village is now accepting applications at 92-1770 Kunia Road, Kunia, HI 96759, and homes are available for move-in immediately. The office is open Monday – Friday 7:30 a.m. to 4:00 p.m. If you have questions regarding this opportunity, please call 808-439-6375 or e-mail: [KU-Management@eah-housing.org](mailto:KU-Management@eah-housing.org).

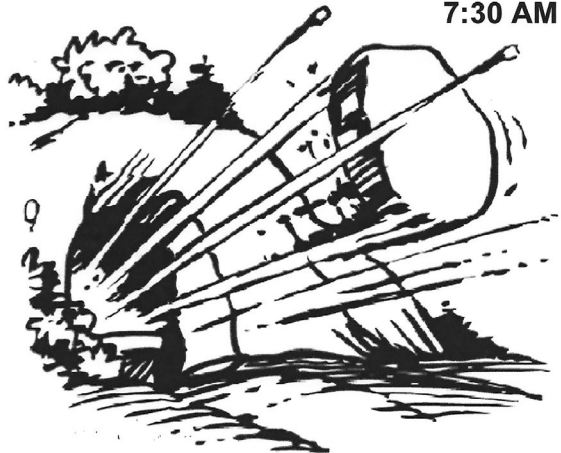
As always, please feel free to contact me if you have questions or concerns about any measures making its way through legislation or happenings in our community. Call me at (808) 586-9490, email [RepMatsumoto@Capitol.Hawaii.gov](mailto:RepMatsumoto@Capitol.Hawaii.gov), or visit [RepMatsumoto.com](http://RepMatsumoto.com).

## North Shore News Easter Issue

Publication Date: April 12, 2017  
Deadline Date: March 31, 2017

## Power in Our RISEN LORD EASTER SERVICES

Sunday – April 16, 2017  
7:30 AM



**SPEAKER: Pastor Dorcas Fuiava**

**WAIALUA COMMUNITY ASSOCIATION**  
Sponsored by - HALEIWA EVANGELICAL MISSION  
INTERNATIONAL (808-637-4567)

(Please stay after for light refreshments and fellowship)





# Waialua Informational Town Hall Meeting

**Aloha!**

**Your local State Legislators are hosting a Town Hall Meeting on April 4th, 2017 at the Waialua Elementary School Cafeteria from 7:00-8:30pm [67-020 Waialua Beach Rd.] to discuss issues that affect our communities!**

Senator Riviere, Representative Matsumoto, and Representative Quinlan invite you to join us at our mid-session Informational Town Hall Meeting. Many hot topics are being discussed in the 2017 Legislative Session. There are many measures that will likely have a significant impact on our families and community.

**Representatives from HART will be attending the meeting to address any questions, concerns, or comments you may have for them.**

**Your input is important!** Please join us at this meeting.

If you're unable to attend and would still like to share your thoughts, please contact any one of our offices:

<b>Senator Gil Riviere</b>	586-7330	SenRiviere@Capitol.Hawaii.gov
<b>Rep. Lauren Matsumoto</b>	586-9490	RepMatsumoto@Capitol.Hawaii.gov
<b>Rep. Sean Quinlan</b>	586-6380	RepQuinlan@Capitol.Hawaii.gov

*There's still time to participate in the legislative process. For more information on how to submit testimony: [www.lrbhawaii.org/par/](http://www.lrbhawaii.org/par/) Thank you for the privilege of serving you!*



We hope to see you at our Town Hall Meeting on **April 4th, 2017 at Waialua Elementary School Cafeteria from 7:00-8:30pm [67-020 Waialua Beach Rd]**. Please attend or send us your thoughts (contact information above) before final votes are made on current legislation!



**Senator Gil Riviere**

Senate District 23  
415 S. Beretania St, Room 217  
Honolulu, HI, 96813  
(808) 586-7330  
senriviere@capitol.hawaii.gov



**Representative Lauren Matsumoto**

House District 45  
415 S. Beretania St, Room 303  
Honolulu, HI, 96813  
(808) 586-9490  
repmatsumoto@capitol.hawaii.gov



**Representative Sean Quinlan**

House District 47  
415 S. Beretania St, Room 304  
Honolulu, HI 96813  
(808) 586-6380  
repquinlan@capitol.hawaii.gov



## North Shore Chamber of Commerce News

### Business Spotlight: New Horizons—Teaching People Constructive Choices

Unfortunately, all of us know people who have lost their way in life due to drug and alcohol abuse. The story is common, and often ends sadly. However, sometimes lives turn around. It takes determination and hard work and often someone helping who genuinely cares. Haleiwa now has such a person in Mark Turansky, a certified substance abuse counselor, who opened New Horizons in Haleiwa late last year. His office is located at 66-526 Kamehameha Highway, Suite C, in the same building complex as Bubble Shack Hawaii. Telephone number is (808) 484-1000; and website, [www.NewHorizonsHawaii.com](http://www.NewHorizonsHawaii.com).

“I have a motto about my life,” said Mark, who struggled through years of drug and alcohol abuse himself. “From your pain comes your purpose. From your mess comes your message. From your mourning comes your ministry. The reason I do what I do comes from my pain. My purpose in life is to guide people to success like I have found.”

Originally from Southern California, Mark spent his high school years in Portland, OR, where, he said, the cold water tended to make surfing unpleasant. At the age of 19, he came to Hawaii and immersed himself into his passion for surfing and “started to live the life.” Unfortunately, that included years of drug and alcohol abuse and failed relationships. However, he was one of the lucky ones who found his way back to sobriety. That was 20 years ago.

As a trained counselor whose father had been a minister, he believed his innate talent to teach and desire to be of service would allow him to help people fight their way out of addiction like he did. A 1984 graduate of University of Hawaii, Mark became a certified addictions and recovery specialist, certified wellness counselor, and certified marriage life coach. In the mid-1990s, he discovered New Horizons Counseling, a nationally recognized program based on a cognitive teaching approach to beat addiction. It is not a 12-step program like Alcoholics Anonymous, but an alternative program based on this principle: If you change the way you think, you change the way you feel, and, in turn, you will change the way you behave.

According to Mark, “New Horizons changed my life, and my counseling.”

In 2008 when the New Horizons director passed away, Mark took over as executive director. He has



run his counseling practice in Mililani but moved it to Haleiwa late last year. Besides counseling at his office, he offers his six-day Treatment Camp, an inpatient addiction program on the North Shore, four times a year. The camp launches recovery in a positive way and continues with therapy afterwards. Mark also conducts Marriage 911 Intensive Couple’s Retreat, a three-day program limited to two couples at a time to help them overcome chronic conflict and distancing.

Mark also shares his wisdom in a book he authored and released in 2013, “Figure It, Face It, and Fix It: Your Surprising Solution to Addiction and Substance Abuse.” In it he describes how to make good choices by facing the causes of the addiction, overcoming fears of relapse, and finding the freedom every addict seeks. The key is to figure out how to feel good without having to resort to alcohol or drugs to do it.



**CHUCK JAMES**  
MUSIC STUDIO

#### Private Music Instruction

Lessons taught by personable and highly qualified teachers for students of all ages. Now offering a no obligation FREE Trial Lesson at our Wahiawa location.

808-626-5754

[www.chuckjamesmusicstudio.com](http://www.chuckjamesmusicstudio.com)

### CPR/AED/BFA

Free Non Certification Class  
Demonstrations &  
Group Participation

Saturday, April 15, 2017  
1 to 2 p.m.

Waialua Community Association  
Open to the Public



**ADVANTAGE  
REALTY  
NORTH SHORE**



STOP BY OUR OFFICE  
IN THE HALE'IWA  
STORE LOTS!

CLIENT RESERVED PARKING  
STALL AVAILABLE

(808) 637-1500

©2017 Better Homes and Gardens Real Estate Advantage Realty. Better Homes and Gardens® is a registered trademark of Meredith Corporation licensed to Better Homes and Gardens Real Estate LLC. Equal Opportunity Company. Equal Housing Opportunity. An Independently Owned and Operated Franchise. Better Homes and Gardens Real Estate Advantage Realty North Shore are affiliates of Better Homes and Gardens Real Estate Advantage Realty.

WE ARE PROUD TO RECOGNIZE OUR BETTER HOMES AND GARDENS REAL ESTATE®

**2016 NATIONAL AWARD WINNERS**

**SILVER AWARD**



TOP 10% OF BETTER HOMES AND GARDENS  
REAL ESTATE® AGENTS NATIONWIDE



**KARIN  
MOODY-TSUTSUI**

R, PB, RB-19578  
(808) 392-7410



**MEME  
MOODY**

RA, RS-74874  
(808) 741-3835



**NOEL  
MARCHAN**

RA, RS-73977  
(808) 282-0949



BETTERHAWAII.COM



# Hawai'i VINE Project: Untangling Seed Dispersal Networks Across O'ahu

*By Mikayla Thistle*

The Hawai'i Vertebrate Introductions and Novel Ecosystems (VINE) Project is a research group that generates information for restoring native plant communities by determining the role non-native animals play in dispersing native plants. After a history of changing land use and introductions of exotic plants and animals, O'ahu has become a global endangered species capital. With the additional pressure of shrinking critical habitat, many native plant species have not been able to successfully compete with introduced species for limited resources. Historically, many native plant species relied on native birds to consume their fruit and disperse their seeds. However, since all native fruit-eating birds are now extinct on O'ahu, native plants will need to rely on non-native animals to spread their seeds.

Our team is collecting data at field sites across the island to determine whether introduced animals can adequately disperse native plants. To learn what birds are eating, we capture birds, collect fecal samples, and identify any seeds we find in the sample. We also attach tracking devices to birds to track their movement, and in turn the potential movement of seeds. When we combine our data on bird and plant

communities, timing of fruit production, and bird diet and movement patterns, we hope to paint a picture of the current seed dispersal networks across the island. We will use this information to understand how Oahu's continually changing forests can be managed to promote the persistence of native plants using the most efficient strategies.

Maintaining Oahu's remnant native forests is crucial for preserving Hawaii's cultural and natural resources. Sustainable harvests of native plants allow native Hawaiians to continue long-standing practices such as hula, lei and garment making, woodworking, and traditional medicine. Native plants also provide ecosystem services such as water storage and filtration and erosion control. The native species that persist are the shrinking window into the great biodiversity that once characterized Hawai'i – a diversity that we are working to preserve.

For more information about the research we conduct and about volunteer opportunities with the project, contact us at [facebook.com/hawaii.vine](https://www.facebook.com/hawaii.vine), [project or hawaii.vine.project@gmail.com](mailto:hawaii.vine.project@gmail.com).



**Civic Engagement and  
Community Building  
By  
Blake McElheny**

In the face of record visitor arrivals and a rapidly changing community, many North Shore residents agree that greater care and attention must be given to decisions affecting the quality of life in this region.

North Shore residents now have the opportunity to provide input on the central government document regulating the future of growth and development on Oahu.

The City and County of Honolulu ("City") is updating the Oahu General Plan and is inviting public comment. Comments must be submitted to the City by May 8, 2017.

The update is being conducted by the City Department of Planning and Permitting ("DPP"). The DPP has hired the planning firm Helber, Hastert and Fee to assist them.

The implications of several of the City's proposed revisions have raised concerns for environmental organizations, Windward Oahu residents, and other Oahu residents. Some of the revisions Mayor Caldwell's Administration proposes include:

1. Eliminating the existing references to limiting Oahu's population growth;
2. Expanding the definition of Oahu's "urban core" beyond Honolulu to include the entire area between Kahala and Pearl City;
3. Designating Laie as an official "Resort" area for Oahu;
4. Allowing vacation rentals in non-resort areas throughout Oahu;
5. Vastly expanding areas for so-called transit oriented development ("TOD") beyond the rail route in order to allow high-density development and developer give-aways throughout Oahu;
6. Expanding the purpose of the document from primarily serving the needs of Oahu residents to addressing the needs of Oahu visitors.

By way of background, the Oahu General Plan is the City's basic planning document. The Plan explains the City's long-range objectives for the general welfare and prosperity of the people of Oahu and also the broad policies needed to attain these objectives. The Plan also sets forth population distribution and regional development patterns.

In addition, the General Plan lays the foundation for the City's comprehensive planning process that addresses cultural, economic, and environmental concerns affecting Oahu.

This overall planning process serves as the mechanism the City government utilizes to provide direction for the future growth projected for Oahu.

The City's planning process is comprised of three levels for the island of Oahu. As the first tier of planning, the General Plan establishes policy guidance for Oahu as a whole. All other plans and implementing regulations must be consistent with the General Plan.

The second tier consists of the eight regional Development Plans ("DPs") and Sustainable Communities Plans ("SCPs") covering the whole of Oahu. Examples are the North Shore Sustainable Communities Plan (last updated in 2011) and the Koolau Loa Sustainable Communities Plan (still in the process of being updated).

These DPs and SCPs relate to specific regions of the island, and (1) describe the pattern of land use desired for the region, (2) provide guidance for infrastructure planning, and (3) identify areas within the particular DP/SCP that might benefit from more detailed planning.

The third tier is comprised of the specific mechanisms to implement the two higher levels of the planning system. These include the implementing ordinances and regulations (for example, the Land Use Ordinance - Honolulu's zoning code), the Subdivision Rules and Regulations, public facilities and infrastructure functional plans, and special area plans.

In summary, the Oahu General Plan is a guide for all levels of government, private businesses, community organizations, and individual citizens. It is intended to guide land use and development decisions and to influence actions in eleven topics:

1. population;
2. economic activity;
3. natural environment and resource stewardship;
4. housing and communities;
5. transportation and utilities;
6. energy;
7. physical development and urban design;
8. public safety and community resilience;
9. health and education;
10. culture and recreation; and
11. government operations and fiscal management.

The current General Plan (2002 edition) that is under revision is available at: <http://honolulu.dpp.org/Portals/0/pdfs/planning/generalplan/GPReport.pdf>

The Second Public Review Draft of the Revised General Plan with the proposed changes described above is available on-line through DPP's project website <http://honolulu.dpp.org/Planning/GeneralPlan.aspx>

Information about the on-going General Plan Update Program as well as public comments received to date are also posted on that website as well.

The final General Plan revisions will be adopted by the Honolulu City Council as a Resolution. This means that after this public review period the Updated Plan will go to the Planning Commission for approval, then to City Council, and finally to the Mayor for his signature.

*Continued on page 15*

## Restructuring of Waialua High and Intermediate School

By: Christine Alexander, Principal

When you step on campus at Waialua High and Intermediate school next year you will notice a significant change. The intermediate students will have a building of their own (Q Building) as well as a separate bell schedule to include their own time slots for lunch and recess.

Middle level education research has been thriving since the 1960's. This movement recognizes that young adolescents are not simply older elementary school students nor younger high school students, but that there are dramatic changes that occur during this time of life requiring a radically different and unique approach to education. Almost 60 years ago, middle school educators saw the need for the provision of special instructional, curricular, and administrative changes in the way that education takes place for kids in early adolescence. Among those changes were the establishment of a mentor relationship between teacher and student, the creation of small communities of learners, and the implementation of a flexible interdisciplinary cur-

riculum that encourages active and personalized learning.

WHIS is about to embark on this journey to ensure our intermediate school students receive a top notch, quality education. We will address the "whole child" by encompassing the importance of character education and teaching to their physical, social/emotional, academic and behavioral needs. We will address the "well-rounded child" through a personalized, high quality curriculum which will prepare them for high school and post-secondary endeavors.

Waialua Intermediate School will consist of two teams with five teachers and an educational assistant; a seventh grade team and an eighth grade team. Students will select names for their teams once school is underway.

Please join us on August 7, 2017 (the first day of the 2017-2018 school year) for a ribbon cutting ceremony, as we celebrate this pivotal event. The time and location will be announced soon.



## Sunset Beach Elementary Students Receive Mini-Grant

Sunset Beach Elementary School was awarded a mini-grant for their project "Reducing Waste by Reusing in the Cafeteria."

Kupu and Kokua Hawaii Foundation announce the 2017 Hawaii Youth Sustainability Challenge Mini-Grant Awardees. Schools statewide will be going green with the help from the inaugural Hawaii Youth Sustainability Challenge (HYSC) mini-grant program. Hawaii's leading conservation and youth education organizations Kupu and Kokua Hawaii Foundation launched the program last year and will soon be awarding more than \$25,000 in grants to 25

schools to kick start 27 innovative environmental projects, which range from composting and rainwater catchment systems to children's books and a futuristic micro-plastic cleaning robot.

"Our youth will become the next generation of environmental stewards and community leaders in our state. That's why we need to inspire and empower them now, with opportunities like our Hawaii Youth Sustainability Challenge mini-grant program, to create sustainable solutions in building a better, more resilient Hawaii," said John Leong CEO of Kupu.

# Flood Damage at Waimea Valley

*By David Orr, Botanical Collections Specialist, Waimea Valley on the North Shore of O`ahu*

I'd never heard such furious rain pounding on my corrugated roof that Tuesday night, but since we report the daily weather statistics for the NWS, I knew it had been very dry for weeks and thought any amount of rain would soak right into our parched streambeds. The first clue that it had been an exceptional storm was the impossibly brown ocean water framed by the trees across from where Pupukea Road meets Kamehameha Hwy. The sand breach at Waimea Bay was the widest I'd ever seen, and all along the estuary, every broken tree, rocky sand-bar and ripped bit of vegetation pointed downstream. Our bright green John Deere tractor, still with the Valley wood chipper attached, tumbled 200 yards from where it had been parked, down the 'Elehaha stream to be stopped by the small bridge makai of the old nursery. The crumpled tractor was deposited next to what used to be a 10 foot deep gully, but it's now filled with sand and boulders.

The flood waters had piled wood, weeds and debris high on the mauka side of the ticket booth and Hale Ho'ike. The "Tiger Orchid" we've grown here since 1979, the largest in the world, wild-collected from New Guinea, was washed away from the first pond. Both nurseries were filled with inches of thick clay/mud that had to be shoveled out. The debris on the old nursery benches was proof that the water had overtopped the tables, but thankfully without enough of a flow to push the pots off.

All Waimea employees were immediately at work removing debris to piles the backhoe could get to. Individual & group volunteers came to help. The Dawson Technical group brought their equipment to scrape mud and debris away from walkways. We are so thankful for their help. The botanical staff dug out and staked up plants which had been flattened by the flood waters. Fortunately, Horticulturist Duke Morgan, had used the tractor (in its last weeks of life) to build a mountain of rich, black compost up the Valley that we've been using to cover so many exposed roots.

We realized later that the water pouring out of both Valleys must have pooled above the 'Elehaha Stream, and this temporary



lake must have slowly revolved, as a giant uprooted banana plant had been carried upstream. The first two ponds were silted up and the surrounding plants were really battered by so much water rushing to the stream. A portion of the main road (by the cannonball tree) had to be rebuilt, because water had washed away the earth below its 4 inches of concrete.

Mauka of the first bridge you can see white roots on both sides of the stream, all of their bark scraped away. Down towards the estuary, some hibiscus hybrids and endangered native *Abutilons* planted in our "Island Beds" (stone-rimmed planting beds in the shape of each island) were washed away, but they are duplicated elsewhere.

The two lowest ponds will probably return to the way they've always looked, but not so for the waterfall stream mauka and makai of the 2nd bridge which spans the Kawiko'ele Stream, the only tributary to the stream below the waterfall. Here is where the waterfall stream has widened considerably, and 5 to 10 feet of the river bank has been carved away from the older of our two gardens of Central and South American plants. The loop path in that garden will have to be reconfigured. Mauka of the 2nd bridge a large stand of the ornamental banana, *Musa rosea*, has been carried away.

One of the most surprising sights is the house-sized boulder cleaving from the cliff face makai of the topmost bridge. If all four bridges hadn't been rebuilt after the 1990 flood, this one would certainly have destroyed them. 1990 was supposed to be our "century" flood. Waimea is an ever-eroding Valley in an era of extreme weather events.





# North Shore Wireless Betty Depolito / Banzai Productions

## PAKALOHA BIKINI TANDEMONIUM

World Tandem Champions 2015 Kalani Vierra and Krystl Apeles (Kauai) won the Pakaloha Bikinis Tandemonium Pro-Am at Turtle Bay in challenging surf on the North Shore of Oahu. Teams competed for a qualifying spot in the World Championship coming up at the Duke's OceanFest in August. Surf ranged from 3 feet to 5 feet with fast breaking surf and late drops which made for exciting viewing from the point. "We had a plan," said team Kalani and Krystl. "We had to change on the spot because of the conditions. Our goal was to get an arm to arm to scorpion, a high difficult lift. We were able to pull that off. We are looking forward to winning a new title and its good that it is in Waikiki this year, being at our home place and where Duke Kahanamoku started the sport. Last year we were in France. (As a team) Our overall goal is try to get an exhibition into the 2020 Olympics and get a few teams to go with us to Japan!" In second place was Leleo Kinimaka and Chandra Krown. For full results check the ITSA website.

### ITSA Final

Kalani Vierra & Krystl Apeles (Kauai, Hawaii) 12.97  
Leleo Kinimaka & Chandra Krown  
(Oahu, Hawaii) 5.13

### ITSA, Amateur Final:

Nick Alexander & Sunema It'o Gibney 5.33  
Sean Apis & Tiffany Chen 4.05

## THE 41ST ANNUAL RELL SUNN MENEHUNE

The Rell Sunn Educational Fund is again putting on the annual Menehune Surf Contest at Makaha on the west side of Oahu. The event will be April 15, Saturday and April 16th Sunday. Only keiki with no NSSA or HASA ratings will be approved to surf in the event. Sign up at [www.RellSunn.com](http://www.RellSunn.com).

## LIFEGUARD TRAINING COURSE

The Department of Parks & Recreation City & County of Honolulu is offering a challenging course to prepare you for emergency situations and Red Cross CPR certification. The course offers lifeguard training, CPR/AED and first Aid in a week format that includes online studies as well. The minimum age is 15 and location if the Veterans Memorial Aquatic Center at the Oahu Regional Park. Dates are April 26-28 and May 2-5th 6:30 p.m. daily. Contact Terry Terukina at 768-3039 for more information and sign up.



*Continued from page 12*

In order to provide comments on the proposed Revisions you must include your name and address and send them via mail or email to:

Mailing Address: HHF Planners  
ATTN: Oahu General Plan Update  
733 Bishop Street, Suite 2590  
Honolulu, Hawaii 96813  
Email address: [gp2035@hhf.com](mailto:gp2035@hhf.com)

Written comments on the Revised General Plan are being accepted through May 8, 2017. Questions can be sent by email to [gp2035@hhf.com](mailto:gp2035@hhf.com).

Lastly, the North Shore Neighborhood Board is hosting a special community meeting for the Board to discuss these topics with the community.

The meeting will be at Waimea Valley Pikake Pavilion on Tuesday, April 25 at 6:30 p.m. to 8:30 p.m.

This meeting will be a chance to discuss the proposed revisions to the General Plan and the related issue of the increasing utilization of public parks by commercial tour bus operators.



*Beach Clean Up Volunteers Photo: NSN*



*Photo: Joey Bagasol*

## **Mokuleia Beach Clean Up**

March 18, 2017- North Shore News, ALEA Bridge and North Shore Food Bank sponsored a beach clean up from Mokuleia Beach Park to Kaena Point. Our volunteers including some of our houseless neighbors cleaned the beautiful stretch of the North Shore. We were also able to paint 30 barriers at Army Beach, we still have more painting to do. If anyone would like to donate paint please contact the North Shore News office 637-3138.

Mahalo to all the community volunteers, Heidi Burgoyne-LDS Waialua Stake, Dennis Drake-Public Affairs Office Director (US Army Garrison Hawaii), Darin Uesugi-Utopia Designs, Skydive Hawaii, Willy's Paella, Kalei Soares, Leif & Gloria Andersen and the NSFB volunteers.



*Beach Clean Up Photo: Joey Bagasol*



# CARE FOR OUR KUPUNA

In 2017, our Hawaii legislature can pass Senate Bill 534/House Bill 607, to create a fund to help caregivers provide care for our kupuna. If passed, it will allow seniors to age at home by establishing a fund ensuring working caregivers have basic support and assistance to care for their aging loved ones.

We are organizing across the state to win this groundbreaking legislation – and we invite **YOU** to join us.

## What would this plan do?

The Kupuna Caregivers effort is intended to help provide assistance to the working caregiver. In this way, a caregiver does not have to choose between staying fully employed or providing adequate care for their loved one.

The program's aim is to provide assistance to caregivers. This program could help pay for a home care aide for a couple of hours, transportation to adult day care/health, adult day/health care, or chore and homemaking services. It will focus on meeting the needs of each individual family.

This program isn't meant to cover a stay in a long-term care facility like a nursing home or an assisted living home. This bill would fund up to \$70 a day for the respite that working family caregivers need in order to stay active in the workforce while caring for their kupuna at home.

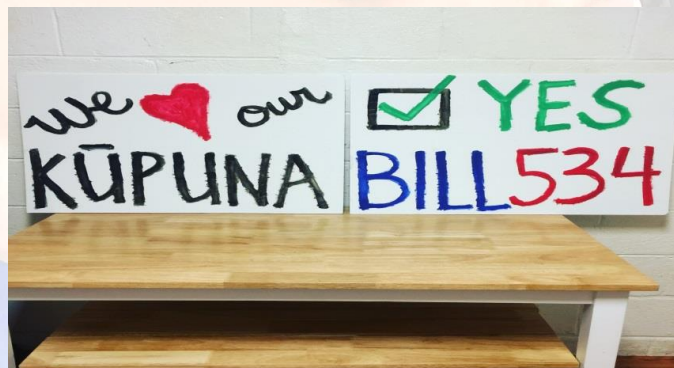
## Who is eligible?

Kupuna Caregivers will use the Kupuna Care screening process, plus the requirement that the caregiver be employed. Hawaii residents, 60 years or older, who have a family caregiver who is employed 30 or more hours a week will be eligible.

To learn more go to [care4kupuna.org](http://care4kupuna.org) or call (808) 947-2950. While there, sign up on a mail list to keep updated of the next hearing date. We encourage your in person testimony at the next hearing. You may also fax or email in your testimony. To email, please go to [capitol.hawaii.gov](http://capitol.hawaii.gov) and search on keywords SB534 or HB607. Select result. Click on blue "Submit Testimony" at top right and follow instructions. Actual testimonies may be found on the same site, and are due 24 hours in advance of hearing. If you know anyone who can benefit from this bill, please share this information with them.

Looking forward to hearing from **you!**

**Note:** This effort differs from that for establishing an Elder/Kupuna Day Care Center in the North Shore, Oahu.



# Serving the North Shore Community



## **WAIALUA FEDERAL CREDIT UNION**

**67-292 GOODALE AVE #A2  
(808) 637-5980  
www.waialuafcu.com**

**Visit us today.**

# **BULLETIN BOARD**



**HALEIWA, HAWAII**

Celebrating 40+ years of Professional Photo Services  
and Historic Images to the Community.  
search: northshorephotohawaii.com

### **OHANA DROP**

*Sponsored by the North Shore Food Bank*

**April 5, 2017, 11 a.m.–2 p.m.**  
**Waialua Community Association**  
**Bring your own bags and boxes for  
wonderful produce!**

### **MAYJAH GRINDS FOOD TRUCK**

**Come check us out serving local kine  
food in Waialua, Eric's Gas Station**  
**Open 7 a.m.–3 p.m.**

**Phone orders (808) 347-6767**

*\*mention this ad & receive a free drink  
with every plate lunch you buy.*

Being  
YOU

**LAURA CHO-STUTLER, PSYD**  
LICENSED CLINICAL PSYCHOLOGIST

66-935 KAUKONAHUA RD  
SUITE 103  
WAIALUA, HI 96791

808.387.6764  
WWW.BEINGYOUHAWAII.COM  
DRCHOSTUTLER@GMAIL.COM

**"THE BULLETIN BOARD THAT IS IN EVERYONE'S HOME"**

# BULLETIN BOARD



Specializing in vegetarian foods, vegan foods, whole foods, organic food. Wheat free, dairy free, raw foods, gluten free. A complete selection of natural foods for 41 years. Make earth day, everyday. Open 7 days. Mon.-Sat. 9am-7pm. Sun. 9am-5pm

66-445 Kam. Hwy  
Haleiwa, Hawaii 96712  
Next to the Post Office  
808-637-6729 • 808-637-1922 fax



**DR. PORTER TURNBULL**  
Chiropractic Orthopedist  
(808) 638-8740  
Appointments available Mon.-Sat. (evenings by appointment)

- Industrial accidents & auto injuries
- Sports injuries • Spinal care
- Safe, Effective, and Gentle

## N-C PLUMBING & SUPPLY

Cont. Lic. No. C-8913



- RESIDENTIAL & COMMERCIAL SALES & SERVICE
- CONTRACTING & DESIGN • HOME PLUMBING SERVICE
- PLUMBING FIXTURES, HEATERS • FREE ESTIMATES

Nestor P. Calilao (Owner) Bus: 637-8662  
P.O. Box 769 Res: 638-5157  
Waialua, HI 96791 Cellular: 372-8718

## BOW WOW BUNGALOWS

Licensed Boarding Kennel  
North Shore, Oahu  
Reasonable Rates  
Ph. 637-2562  
*These Dogs Have Fun!*



*Color your Night!*

Paint and Wine Parties!  
paintpaina.com  
Now at: Turtle Bay Resort  
Just Tacos, Mililani

Use promo code ARTIST for 10% off!  
SIGN UP NOW paintpaina.com Call 808 781-2218  
for group discounts, private parties, fundraising, and wine tasting events.

*Shannon Ayonon, LMT*  
MAT#14274

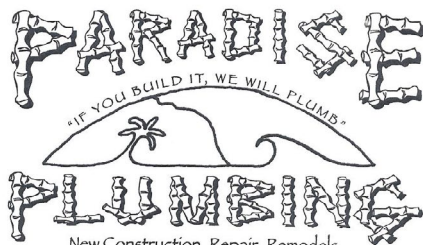
*Heavenly Touch Mobile Massage Services*  
Also at North Shore Salon & Spa  
Call to schedule your appointment  
(808) 352-2677  
Salon 637-8089  
Insurance Accepted with Dr.'s Approval

## Munden Design & Build

Lic.#BC19632

Design • Plans • Permits • Construction  
Additions & New Residences  
808 391-8616

*Providing quality work since 1978*



Dale Christensen C-29856 (808) 368-1473

## GREEKZ > leakz

Greekzplumbing.com C-32939

Plumbing repair & service

372-1820

School of Champions

Established 1966

International Karate Federation



**IKF Waialua Dojo**  
Waialua Elementary School

Beginner classes - ages 5 & up  
Mon & Wed 5:00 - 6:00 pm

Intermediate classes  
Mon & Wed 6:00 - 7:30 pm

Call 780-5457 or email: wvbinz.bb@gmail.com



# RED READER FOR LIFE

56-490 Kam. Hwy. #293-8935 M, W, Th: 9 - 5 pm; Tues: 12 - 8 pm; Fri: 9 - 3 pm  
Hawai'i State Public Library System [www.librarieshawaii.org](http://www.librarieshawaii.org)

## April 2017

CHECK US OUT ONLINE: Register for library programs online at: [www.librarieshawaii.org](http://www.librarieshawaii.org) check availability on all our **FREE** programs!

All Kahuku Library programs are generously sponsored by our Friends of the Library Kahuku, please support our FOLK.



### Programs and Classes For Keiki to Kapuna

#### Sewing Classes

Please no unattended children. Space is limited. RSVP required.

#### Machine Sewing Basics W/ Aunty Joyce

Tues, April 4th & 18th between 4:00pm to 6:30pm (Come when you can)



#### Children's Day Fish Bags



Tues, April 25th, 5:30pm to 7:30pm  
Good for the Beach, laundry, or toys!  
Note: this project may require a return class on May 2nd to complete your bag. Age 9+



#### Easter Craft Program

Tuesday, April 11th At 6:00 pm

Make mini troll baskets and yarn eggs



#### Celebrate Earth Day: with Documentary Before the Flood

Tuesday, April 18th At 5:30pm For all Ages



#### AARP: Social Security Workshop

WEDNESDAY, April 27th At 11:00am



Tues. April 4th 6:00pm

Self directed crafting Theme: Moana

All ages welcome. Children must be accompanied by a caregiver.



Lego Play & STEAM Time  
Weds 2-4pm, Ages 3-9  
STEAM Time Thursdays  
2:30-4:30pm, Ages 9-17

### Keiki Storytime

Storytime: Music & Playtime

Friday @10am  
Mondays @ 10am

#### Help your Library JOIN the Friends of the Library Kahuku (FOLK)

Forms are available at Kahuku Library Or contact [KCL@librarieshawaii.org](mailto:KCL@librarieshawaii.org) for more information

#### Get your Kahuku Library newsletters and flyers by email

Email us at: [KCL@librarieshawaii.org](mailto:KCL@librarieshawaii.org) with your email address



#### Movie: Moana

Tues, April 4th at 5:30pm



**AARP** Tax-Aide™  
Thursdays 9am to 1pm  
March to April 13th,



**LIBRARY CLOSED**

Fri, April 14



**North Shore Food Bank**  
**Food Bag Distribution**  
**Wednesdays, 10 a.m.-12 p.m.**  
**Waialua Community Association**

# WAIALUA PUBLIC LIBRARY UPCOMING EVENTS

**Waialua Used Book Sale**  
 Saturday, April 15, 9am to 2pm  
*Weather Permitting*  
*Great Deals! Great Prices!*

**Waialua Readers' Group**  
 Thursday, April 27, 9:30 to 11am  
*Pick of the Month: "A Man Called Ove"*  
 by Fredrik Backman  
*(the library has 41 copies)*

**Waialua Writers' Group**  
 Saturday, April 8, 11am  
*Topic of the Month: "Scary Stories"*

**Waialua Library Recurring Events**  
 Computer Instruction - Fridays, 9am  
 Toddler Time - Fridays, 10am  
 Children's Storytime & Crafts - Saturdays, 10am

**Library will be closed Friday, April 14, 2017**

*If a sign language interpreter or special accommodations are needed, please call the library 14 days in advance at 637-8286*



Donna & Peter Mitchell

## Aloha from Australia!

Correction- March 15, 2017, Donna Mitchell is pictured in the OFF da Island photo.

North Shore News readers abroad are welcome to submit OFF da Island photos. For more information on the OFF da Island campaign turn to page 23.

## North Shore News



## 2017 Schedule

PUBLICATION DATE	EDITION	DEADLINE DATE
April 12	#7	March 31
April 26	#8	April 14
May 10*	#9	April 28
May 24	#10	May 12
June 7	#11	May 26
June 21	#12	June 9
July 5	#13	June 23
July 19	#14	July 7
August 2	#15	July 21
August 16	#16	August 4
August 30	#17	August 18
September 13	#18	September 1
September 27	#19	September 15
October 11	#20	September 29
October 25	#21	October 13
November 8	#22	October 27
November 22	#23	November 10
December 6	#24	November 24
December 20	#25	December 8

\*May 10 CANCELLED

**Direct-Mailed to Every Home**  
**MOKULEIA • WAIALUA • HALE'IWA • KAHUKU • LAIE**  
**Every Other Wednesday**  
**12,000 copies**

"The North Shore's most popular publication" since 1970  
 (808) 637-3138 • NShoreNews@aol.com • NSN4Linda@aol.com  
 www.northshorenews.com



# CLASSIFIEDS

The North Shore News is published every other Wednesday and mailed free of charge to all North Shore homes and businesses. Extra copies may be obtained at our office.

**PRESS RELEASE POLICY:** Submit press releases in person, mail or email to Editor, North Shore News, 66-437 Kam. Hwy., Suite 210, Haleiwa, HI 96712. Please type your releases and keep them shorter than 200 words unless they are of an unusual news interest. Releases should be viable news stories and are published on a **space available basis only**, with priority given to those received in our office first. You may attach photos. We are not responsible for the return of any photos. All materials are submitted at owner's risk. We reserve the right to edit and/or refuse all submissions including advertising.

**EDITORIAL POLICY:** We welcome articles and letters from our readers. Letters to the Editor are published on a space available basis only and preference is given to shortness of length, and quality of content. We prefer to run not more than one letter, per person, per 6 month period. Letters subject to edit.

Views expressed by our contributing writers and advertisers do not necessarily reflect the view of the management and staff of the North Shore News. All rights reserved. Reproduction in whole or part without permission is prohibited. © 2017.

**Editor & Classifieds**

Linda Seyler

**Typography**

Downtown General Store

**Contributing Writers**

- Tom Jacobs
- Betty Depolito
- Naty Hopewell
- City Councilman Ernie Martin
- State Representative Lauren Matsumoto
- Senator Gil Riviere
- Malia K. Evans
- Blake McElheny

**Photography**

Banzai Productions



Please recycle this newspaper.

**SERVICES**

**SHORE ELECTRICAL SERVICE**  
New Const-Remodels  
638-0049 / Lic#C20777

**Computer Problems?**  
I can fix any MAC or PC.  
Chris 371-3089

**Andres Plumbing**  
All your plumbing needs  
808-256-7337 Lic#C24500

**North Shore Pumping**  
Septic and Cesspool Services  
Clifford 638-0900 • 291-5099

**NS Cleaning LLC**  
Vacation/Residential/Commercial  
Nancy 808-798-7423 Bonded

**Carpentry & Painting Services**  
Repairs/Remodeling,  
Termite Rot, Doors, Cabinets,  
Countertops, etc.  
Reasonable Rates 271-6584

**HANK'S WELDING**  
Certified, mobile, fabrication &  
installation services. Specializing  
in stainless steel welding.  
386-3992

**Green Gypsy Thrift Shop**  
Waialua—(808) 366-4000  
Next to Paalaa Kai Bakery

**Dog/Cat Nail Trimming**  
At your home—only \$20.00  
Call 637-5395

**North Shore Car Rentals**  
Low cost rental cars.  
Rates are low by providing  
slightly older cars with a  
"local" vibe to them, don't  
be fooled. All vehicles are  
well maintained and safety  
inspected. please visit  
northshorecarrentals.com or  
call (808) 260-4960.

**Massage Therapy**  
Specializing in Sports Massage  
Deep Tissue—Gift Certificates  
25 yrs experience  
MAT 8865  
Call Allen 638-0346

**Paumalu Electric Inc.**  
C 18074

Residential & Commercial  
New Installation & Repairs  
Renovations. Remodels  
Electric Meter Replacements  
  
Dave Hancock 638-9054

**Hawaii Tree Co.**  
Trimming & Removal  
Professional-Reliable  
Free Estimates  
462-2749

**PIANO LESSONS**  
Guitar, Ukulele, Bass,  
Singing, Songwriting  
637-4635

**BLOOM DIRECT CARE**  
Direct Physician-to-Patient Medical Care  
Unrushed Visits, Feel Heard  
Acute Visits & Membership Plans available  
Uninsured Welcome  
Discounts for Kama'aina, Military or  
North Shore Businesses  
  
Melissa Bloom, MD  
Board Certified in Family Medicine  
www.BloomDirectCare.com  
808-518-3152  
Located in XCEL building, Haleiwa

**Radiant Skin Care & Waxing**  
Aynjul Benigno  
Licensed Esthetician  
Call or Text 808-222-8124  
radiantskincareandwaxing.com  
66-935 Kaukonahua Rd.,  
Waialua

**Aloha Computer**  
PC/MAC Repair/Virus Removal  
Fax/Copy/Internet Access  
Located next to Paalaa Kai Bakery  
Open M-S, 10-4.  
372-2667 or 237-4558

**BIKRAM YOGA**

*BUILD STRENGTH,  
FLEXIBILITY & BALANCE*  
BEGINNERS TO ADVANCED  
Please call for class schedule  
**637-5700**

**TURBO TONING  
with Liz**  
Mondays 9:15am - 10:15am  
at the WCA-Haleiwa Gym  
Call 386-8009 for more info.

**Your Clean Home  
Vacation/Residential  
Home Cleaning**  
Affordable • Reliable  
• Green Cleaning  
**For Free Estimate  
Call 364-6089**

**BOBBY'S BODIES**  
Tuesday evenings at 5:00 p.m.  
• Body Toning  
• Cardio Pump/Fat Burner  
For more info: call Bobby, owner of  
BOBBY'S BODIES at 637-4150

**North Shore  
Auto Detailing**  
*Mobile Service—We Come to You*  
Billy Ching  
808-371-0854

**Property Management**  
10% monthly  
Pipe Leak Detection  
Rev. Rylie Richmond, SLA, CRA  
RS 37816  
(808) 753-5588  
C&C Realty RB16360



Like us on Facebook:  
[Facebook.com/NSNewsHaleiwa](https://www.facebook.com/NSNewsHaleiwa)

**HOW TO CONTACT THE NORTH SHORE NEWS**

Letters to the Editor, and other items submitted for publication consideration may be sent to us via:

MAIL: 66-437 Kamehameha Hwy., Suite 210, Hale'iwa, HI 96712

E-MAIL: [NShoreNews@aol.com](mailto:NShoreNews@aol.com)

PHONE: (808) 637-3138

Office Hours: Monday – Friday 10 a.m.-3:30 p.m.

[www.northshorenews.com](http://www.northshorenews.com)

# CLASSIFIED ADS

**Next Issue - april 12, 2017**  
**Deadline Date - Mar. 31, 2017**

**HARVEY'S TOWING LLC**  
24 hr Towing Service  
Lockouts, Jumpstarts &  
Recovery. Specializing in  
opening locked car doors.  
Call anytime 478-0333

**FREE ADS**  
**Garage & Yard Sales,**  
**Reunions, Lost & Found.**  
Email ad to:  
NShoreNews@aol.com

**BUSINESS SERVICES CENTER**  
Fast & Convenient Copy, Fax, Scan,  
Computer/Internet, Laminate, & More  
  
**Across from the Haleiwa Post Office**  
637-4558 • [gonorthshore.org](http://gonorthshore.org)  
#gonorthshore

**Classified Ad Rates**  
3 lines (min.) \$18.89  
4 lines \$25.13  
5 lines \$32.45  
1" Box Ad \$41.88  
(27 characters in each line)  
Include your contact information.  
*\*Ads can be dropped off in mail slot, mailed, or emailed. Pay by check payable to: North Shore News or credit card by phone order.*  
We reserve the right to refuse any advertisement with a full refund.  
North Shore News • 66-437 Kam. Hwy., Suite 210, Haleiwa, HI 96712  
• (808) 637-3138 • NShoreNews@aol.com

  
**Marianne Abrigo, Properties**  
Specializing in -  
North Shore  
Real Estate  
Ask for our list of available properties and/or a free market analysis.  
**Marianne M. Abrigo**  
"Realtor since 1974"  
Office **637-3511**  
Fax **637-0777**  
Email **mabrigo222@aol.com**

**North Shore Pet Nanny**  
**Pet Sitting, Walking & Training etc...**  
References available  
Call Kathryn (808) 489-3645

**LEARN TO SWIM**  
AT THE  
**HAWAII SWIM SCHOOL**  
ON THE NORTH SHORE  
Developing swimmers since 1982  
Haleiwa Rd. at Smiley Place  
637-4863

**VT SERVICES LLC**  
Heavy overgrowth, clearing for safety reasons, vegetation management or removal.  
Call for free estimate.  
(808) 341-1402

**KNIFE & TOOL SHARPENER**  
Lot before Waiialua Sugar Mill  
9am-4pm, Jim

## FOR RENT

**TABLES & CHAIRS**  
**780-8037**

## HELP WANTED

Luibuenos Mexican & Latin Cuisine. Now hiring: dishwashers, cooks, preps, AM/PM and all front of house. silva@luibueno.com

**Music teachers wanted**  
For private lessons.  
754-0103

Farm Worker \$13.00/hr  
Immediately hiring reliable help for Agriculture work in Waiialua. Must be able to work all day outside. Previous farm experience preferred. 808-695-3974 jobs@hi.employment.com

**Retail Sales Surf & Sea**  
Hawaii's Ocean Sports Headquarters is always looking for hard working, energetic people to become a part of our sales team. Good pay, bonus, benefits. Japanese speaking a plus. Ocean sports experience and dive instructor wanted. Please contact surfnsea@surfnsea.com for details.  
Apply in person daily 9am-7pm  
62-595 Kam. Hwy., Haleiwa

## MISCELLANEOUS

**VETERANS AFFAIRS**  
Homeless Outreach Veterans Program  
Call Art Minor  
(808) 208-0406

**NOAA Stranded, Entangled Injured Sea Turtles**  
(808) 725-5730

**OFF da ISLAND**  
Are you leaving Oahu on vacation or business? Do you live on a neighbor island, the mainland or foreign country and subscribe to the North Shore News? Try send us a photo of someone in front of a sign or landmark holding a copy of the NSN. Email your photo along with the person or persons' name, community of residence, telephone number and photo location to: NShoreNews@aol.com.

**LANAKILA MEAL ON WHEELS**  
Volunteer Delivery Drivers Needed  
Mon.-Sat. 8:30am-11:30am  
For more information:  
Call (808) 356-8519  
[www.lanikilapacific.org](http://www.lanikilapacific.org)

**Adopt A Park!**  
City Contact  
Clinton Jamile "C.J."  
City & County of Honolulu  
Adopt a Park Director  
768-3034

**North Shore Food Bank**  
Food bag distribution  
Wednesdays at Haleiwa Gym across from Post Office  
10am-12pm

**Koolauloa Health Center**  
1st & 3rd Wednesday  
Haleiwa Gym, 9am -12  
Assistance with insurance & other public benefits, health education & medical care.  
For more info call 792-3843

**AA MEETINGS**  
Sun- 10am Kaiaka Park  
Tues- Waimea Church Nooners  
Big Book, Cottage #2-8pm  
Wed- Lava Ladies, Cottage #2-6pm  
Primary Purpose, Cottage #2-8pm  
Thurs- Cottage #2-8pm  
Fri- Cottage #2-5pm  
Sat-Pancake Meeting, Cottage#2-6:30am, Cottage#2-8pm

**Animal Rescues & Investigations**  
**356-2256**

This year Easter is on Sunday, April 16, 2017.  
*If you have an event to announce, please submit information by the following deadline:*  
**Publication Date: April 12, 2017**  
**Deadline Date: March 31, 2017**  
For info and discounted ad rates call 637-3138

**For Advertising Rates**  
Call 637-3138 or go to [www.northshorenews.com](http://www.northshorenews.com)

Kahuku Hospital Health Education  
Healthy Communities  
Farmers Market  
Saturday - April 8, 2017  
8am-12pm

  
Like the North Shore Food Bank on Facebook:  
[Facebook.com/Haleiwa Food Bank](https://www.facebook.com/HaleiwaFoodBank)

# 41ST ANNUAL Rell Sunn



ARTWORK AND DESIGN BY RICK RIETVELD • ORIGINAL PAINTING COLLECTION OF THE SPENCER CROUL FAMILY

## MENEHUNE SURFING CHAMPIONSHIPS

Saturday April 15th and Sunday April 16th

[www.RellSunn.com](http://www.RellSunn.com)